

Baler Presona, type LP 50 EH1, 50 t pressing force, yoc 2005, nur 30,408 operating hours, drive power 22 kW, with 5-fold vertical tying system



The machine is currently in our workshop undergoing a partial overhaul and general maintenance work. Once the overhaul work has been completed, the press will be tested during operation and is expected to be available for sale from the middle/end of September.

Technical data baler:

Manufacturer Presona AB

Type LP 50 EH1

Year of construction 2005

Operating hours 30,408 hours, as of April

Number of pressed bales 198,059 as of April

Pressing force main press 50 tonnes

Specific pressing force 63 N/cm²

Theoretical throughput capacity 530 m³/hour

Throughput capacity under operating conditions 260 m³/hour

Dimensions of feed chute 1,250 x 1,100 mm

Bale chamber volume 2.2 m³

Bale dimensions 1,100 x 720 mm, variable length

Drive power 22 kW

Tying 5-fold vertical, fully automatic

Throughput rates with a

bulk density of 30 kg/cbm 6 up to 7 tonnes/hour

Bulk weight of 50 kg/cbm 7 up to 9 tonnes/hour

Bulk weight of 100 kg/cbm 11 up to 14 tonnes/hour

Bale density (paper/newspapers) 400 to 550 kg/m³

Hydraulic oil tank capacity 600 litres

PLC control Telemecanique TSX Micro

Schneider Magelis control panel

Effective transport dimensions excl. baler 8,125 x 2,300 x 3,000 mm (L x W x H)

Transport weight press approx. 16 tonnes

Baler Presona, type LP 50 EH1, 50 t pressing force, yoc 2005, nur 30,408 operating hours, drive power 22 kW, with 5-fold vertical tying system

Condition of the baler:

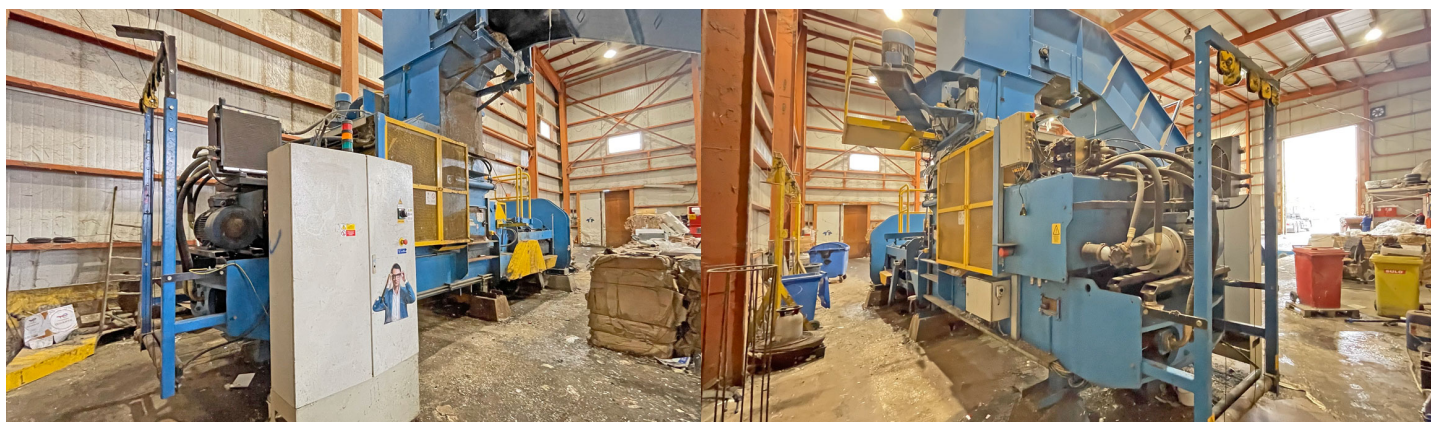
The machine is currently in our workshop undergoing a partial overhaul and general maintenance work. Once the overhaul work has been completed, the press will be tested during operation and is expected to be available for sale from the middle/end of September.

Scope of delivery:

Only the baler will be sold.

The documentation (Manual, CE-declaration, electr./hydr.-drawings), are completely available. Inspections are possible after agreement. We will not assume liability for the given technical data and possible errors.

Baler Presona, type LP 50 EH1, 50 t pressing force, yoc 2005, nur 30,408 operating hours, drive power 22 kW, with 5-fold vertical tying system



Baler Presona, type LP 50 EH1, 50 t pressing force, yoc 2005, nur 30,408 operating hours, drive power 22 kW, with 5-fold vertical tying system

