

Baler Avermann, type AVOS 1410-45/80, 80 t press force, yoc 2009, only 20,536 operating hours, drive power 45 kW, with special press ram



Due to a reorganisation of the manufacturing processes within the company, a new baling line is being built in a new hall. The old baling press with conveyor technology is therefore no longer required and is expected to be available for sale at the beginning of 2025.

Technical data baler:

Manufacturer Avermann Maschinenfabrik GmbH & Co. KG, Germany

Type AVOS 1410-45/80

Year of construction 2009

Operation hours 20,536 hours, as of September 2024

Press power main press 80kN

Specific press force 103,9 N/cm²

Feed channel 1,400 x 1,000 mm

Theoretic cycle time 12 sec

Theoretic throughput capacity 300 m³/h

Bale size 1,100 x 750 (w x h), the length is variable

Drive power 45 kW

Connected load 75 kW

Tying system 4-fold, vertical, fully automatic

Throughput capacity at a

bulk weight of 30 kg/cbm approx. 6,0 t/h

bulk weight of 50 kg/cbm approx. 10,5 t/h

bulk weight of 100 kg/cbm approx. 17,5 t/h

Bale weight with a bale length of approx. 1.2 m up to 600 kg, depends on material

SPS controller Siemens S7-300

Operating panel pulsotronic

Baler dimensions built up 8,610 x 2,400 x 3,835 mm (l x w x h)

Transport weight baler approx. 16 t

Special equipment:

Wear-resistant floor made of HARDOX steel

Baler Avermann, type AVOS 1410-45/80, 80 t press force, yoc 2009, only 20,536 operating hours, drive power 45 kW, with special press ram

Special press ram for pressing 'difficult' materials and loose bulk materials with small grain sizes
Control cabinet air conditioning
Machine foot elevation 200 mm

Remark:

Due to a reorganisation of the manufacturing processes within the company, a new baling line is being built in a new hall. The old baling press with conveyor technology is therefore no longer required and is expected to be available for sale at the beginning of 2025.

Technical data for the chain belt conveyor:

Manufacturer not known
Type not known
Length of feed belt 5,300 mm
Length of ascending belt 12,700 mm
Overall height 7,300 mm
Useful width 1,200 mm
Unfortunately, no further technical data, documentation or drawings are available.

Condition of the press system:

The entire system is in very good condition and is regularly cleaned and maintained by the operator. The quality of the bales is exceptionally good, as you can see from the photos of the pressed bale goods. Even hard plastics such as plastic crates, PP bucket chains and PE plastic drums were pressed into dimensionally stable bales with the fourfold vertical binding. Tidiness, cleanliness and maintenance of the systems are practised in this company and not just written on the website.

Scope of delivery:

Avermann baler, type AVOS 1410-45/80, incl. wire drawing stations and bale chute
Avermann conveyor belt, type KGF GB 1500

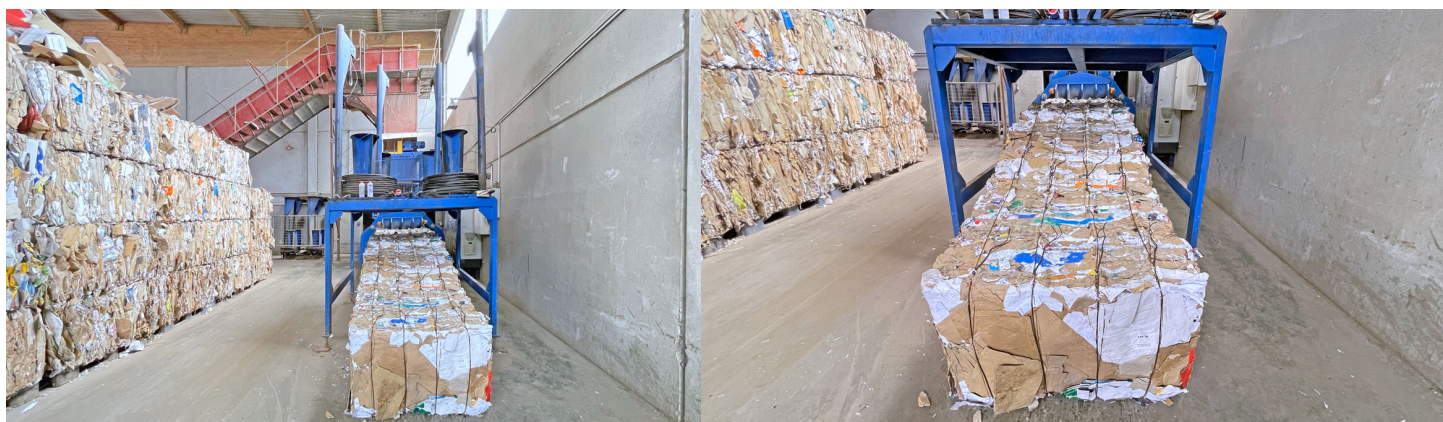
Comments:

The documentation (operating instructions, CE declaration, electrical/hydraulic circuit diagram) for the press is available in full. Unfortunately, there is no more documentation for the conveyor belt. Viewing is possible by appointment. We accept no liability for the technical details or any errors.

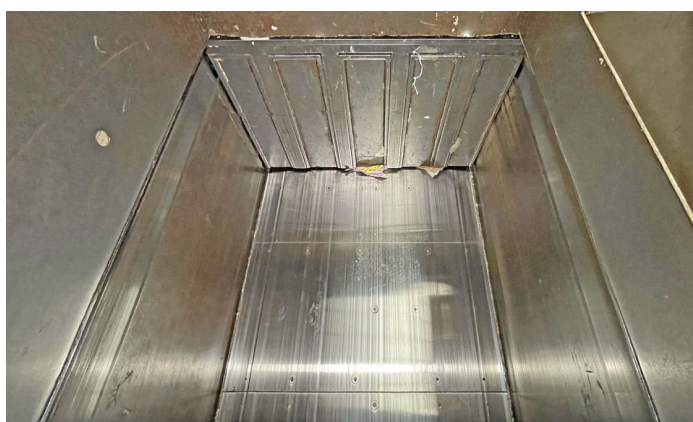
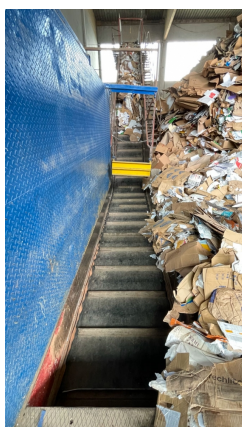
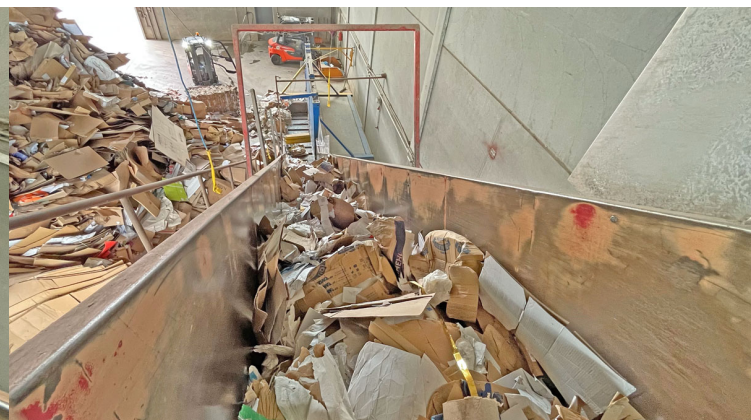
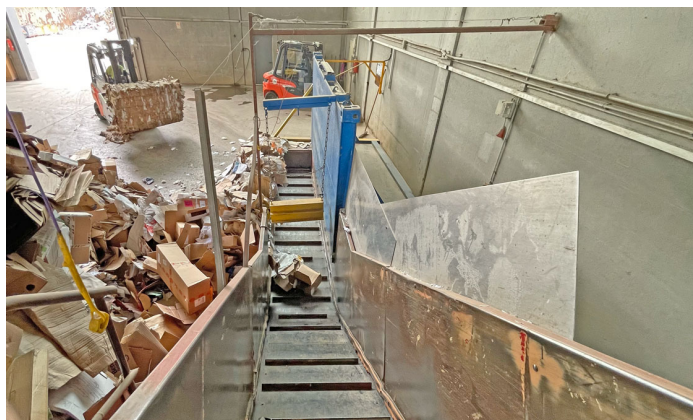
Baler Avermann, type AVOS 1410-45/80, 80 t press force, yoc 2009, only 20,536 operating hours, drive power 45 kW, with special press ram



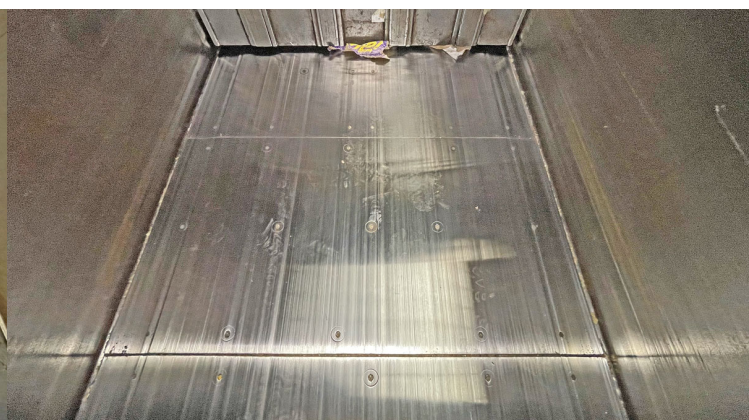
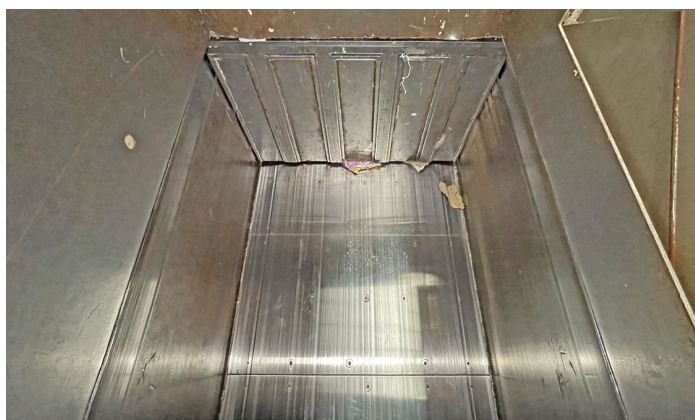
Baler Avermann, type AVOS 1410-45/80, 80 t press force, yoc 2009, only 20,536 operating hours, drive power 45 kW, with special press ram



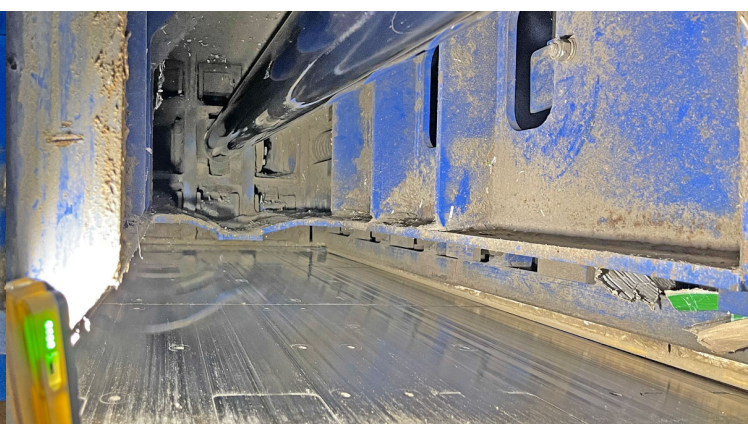
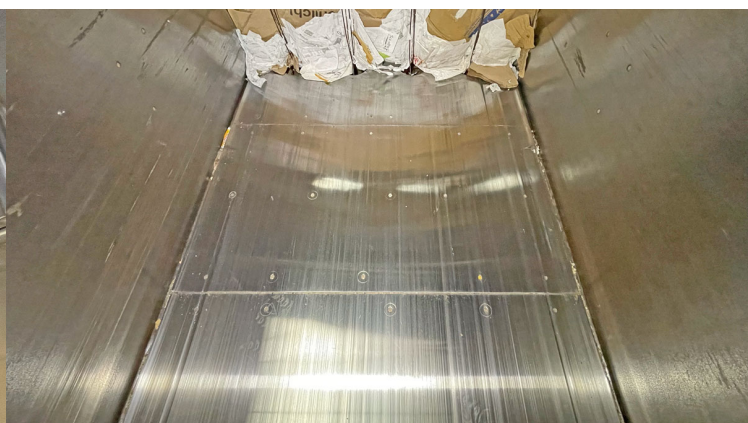
Baler Avermann, type AVOS 1410-45/80, 80 t press force, yoc 2009, only 20,536 operating hours, drive power 45 kW, with special press ram



Baler Avermann, type AVOS 1410-45/80, 80 t press force, yoc 2009, only 20,536 operating hours, drive power 45 kW, with special press ram



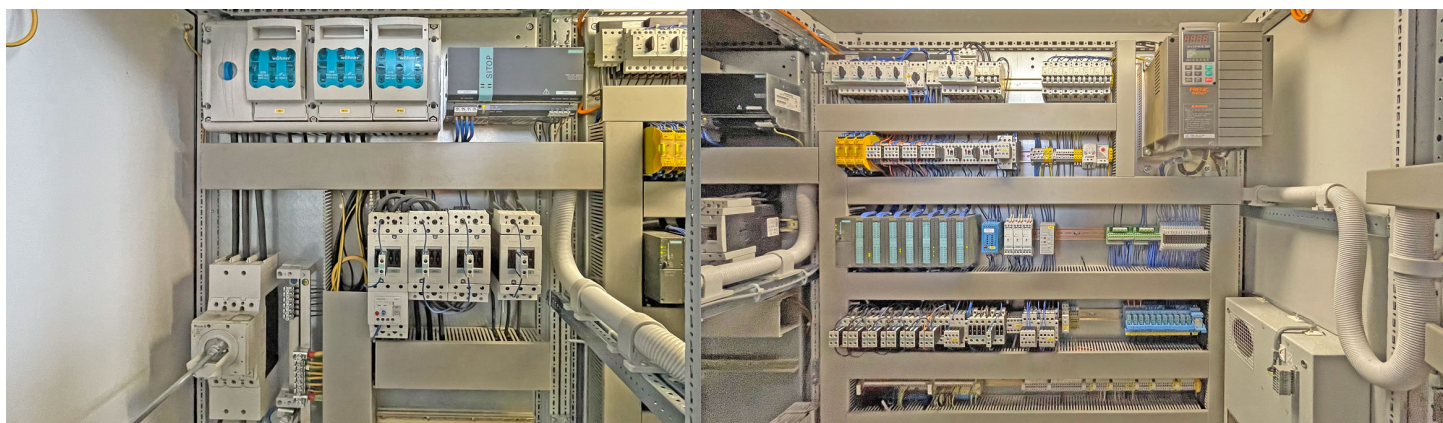
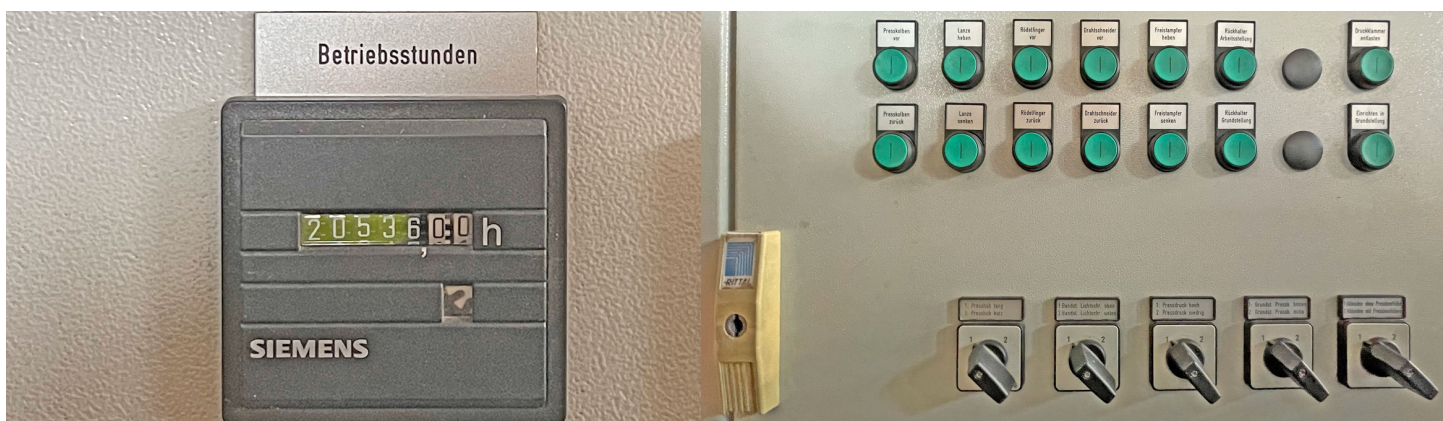
Baler Avermann, type AVOS 1410-45/80, 80 t press force, yoc 2009, only 20,536 operating hours, drive power 45 kW, with special press ram



Baler Avermann, type AVOS 1410-45/80, 80 t press force, yoc 2009, only 20,536 operating hours, drive power 45 kW, with special press ram



Baler Avermann, type AVOS 1410-45/80, 80 t press force, yoc 2009, only 20,536 operating hours, drive power 45 kW, with special press ram



Baler Avermann, type AVOS 1410-45/80, 80 t press force, yoc 2009, only 20,536 operating hours, drive power 45 kW, with special press ram



Baler Avermann, type AVOS 1410-45/80, 80 t press force, yoc 2009, only 20,536 operating hours, drive power 45 kW, with special press ram

