

28	WASHER	099	DIN126-A3C	146340	0.0	3
27	WASHER	014	DIN126-A3C	182634	0.0	3
26	KK-WASHER	022	K05 L44-17 BK	21608	0.0	4
25	WASHER	M05	DIN934-BA3G	182172	0.0	4
24	WASHER	M12	DIN934-BA3G	135863	0.0	3
23	WASHER	M20	DIN934-BA3G	112904	0.0	4
22	WASHER	M12X025	DIN933-8BA3G	118220	0.0	3
21	HEXAGONAL SCREW	M BK 30	DIN933-8BA3G	25306	0.0	4
20	HEXAGONAL SCREW	M20X070	DIN933-8BA3G	28302	0.0	4
19	WASHER	M12X025	DIN933-8BA3G	118220	0.0	3
18	WASHER	M12	DIN934-BA3G	135863	0.0	3
17	WASHER	M20	DIN934-BA3G	112904	0.0	4
16	WASHER	M12X025	DIN933-8BA3G	118220	0.0	3
15	WASHER	M12	DIN934-BA3G	135863	0.0	3
14	WASHER	M20	DIN934-BA3G	112904	0.0	4
13	WASHER	M12X025	DIN933-8BA3G	118220	0.0	3
12	WASHER	M12	DIN934-BA3G	135863	0.0	3
11	WASHER	M20	DIN934-BA3G	112904	0.0	4
10	WASHER	M12X025	DIN933-8BA3G	118220	0.0	3
9	WASHER	M12	DIN934-BA3G	135863	0.0	3
8	WASHER	M20	DIN934-BA3G	112904	0.0	4
7	WASHER	M12X025	DIN933-8BA3G	118220	0.0	3
6	WASHER	M12	DIN934-BA3G	135863	0.0	3
5	WASHER	M20	DIN934-BA3G	112904	0.0	4
4	WASHER	M12X025	DIN933-8BA3G	118220	0.0	3
3	WASHER	M12	DIN934-BA3G	135863	0.0	3
2	WASHER	M20	DIN934-BA3G	112904	0.0	4
1	WASHER	M12X025	DIN933-8BA3G	118220	0.0	3

Just for Information!



WOOD PROCESSING

800603159002

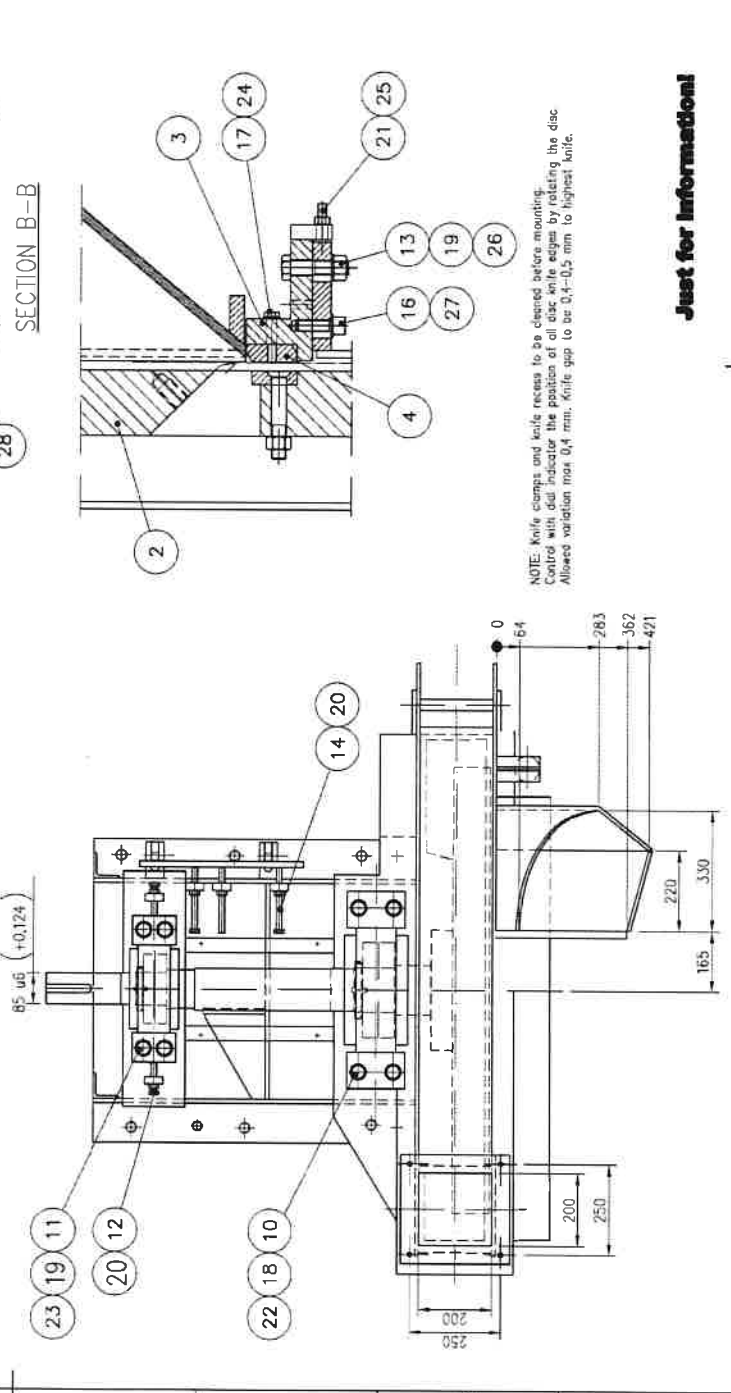
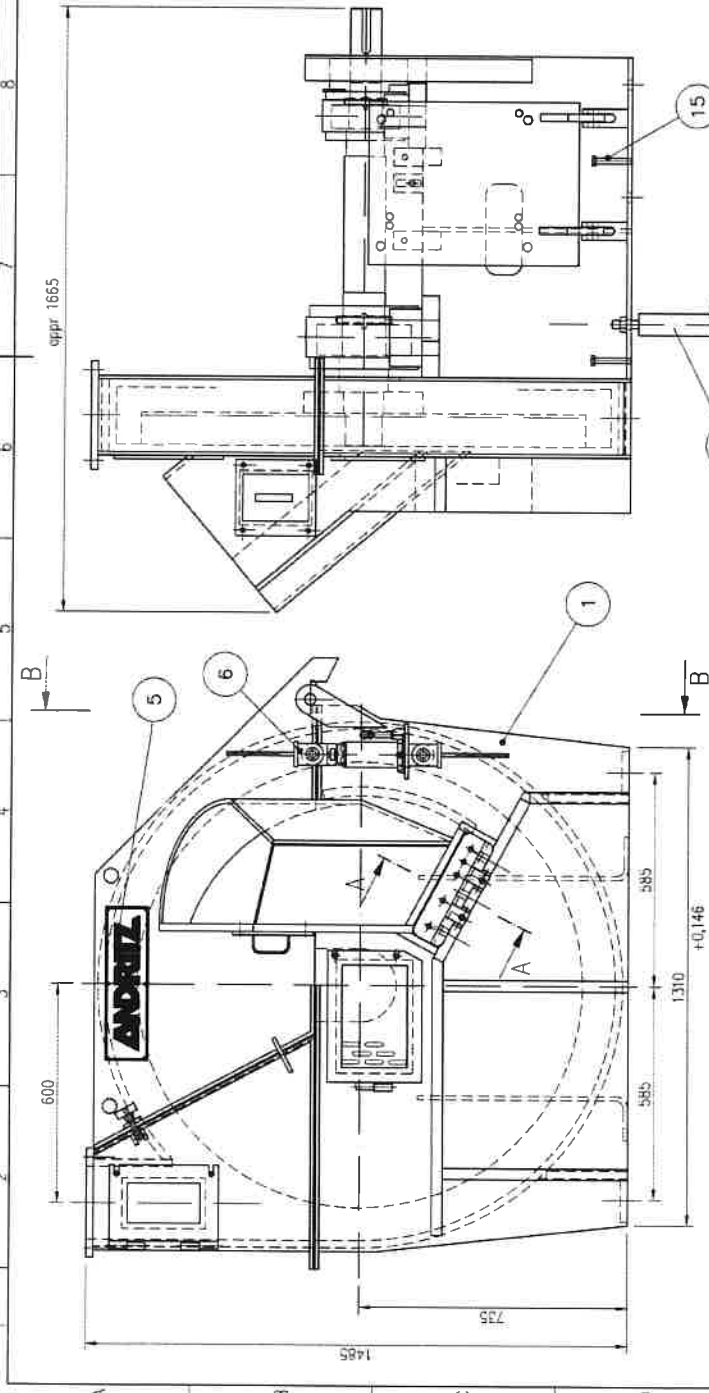
1/1

Scale: 1:10
 Date: 16.10.2006
 Project: 800603159002
 Drawing: 800603159002
 Part: 1
 Title: WOOD PROCESSING
 Author: CAHREAN
 Checked: RECHIFFER
 Approved: RECHIFFER
 Project: FACTORY ASSEMBLY PROJECT

Rev. Description	Date	Drawn	Checked	Approved	By Date
1 A ITEM NAME CHANGED	20.04.2006	PHILIPPAULT			

Ruuvi / Screw	Kiir momentti / Torque
M12	70 Nm (52 lbf.ft)
M16	173 Nm (128 lbf.ft)
M20	338 Nm (250 lbf.ft)
M24	583 Nm (430 lbf.ft)

Part No.	Description	Qty	Unit	Material	Part No.	Description	Qty	Unit	Material
28	FOUNDATION BOX	1	PC	50105887/10101354	10				
27	WASHER D17 DINGBAGSARAKASTU	1	PC	17997	0				
26	WASHER D21 DINGBAGSARAKASTU	1	PC	16319	0				
25	THREAD BAR M12 55000 / ZNS (11.52C)	110	PC	251034	0				
24	WASHER D14 DM126-AS	1	PC	162634	0				
23	WASHER D21 BR3 X.56 18200_10	1	PC	21024	0				
22	NUT M12 DM176-RE2001	1	PC	15191	0				
21	NUT M12 DM134-BA3	1	PC	152663	0				
20	NUT M16 DM134-BA3	1	PC	149974	0				
19	NUT M20 DM134-BA3	1	PC	172904	0				
18	NUT M24 DM134-BA3	1	PC	115535	0				
17	HEX SCREW M12000 DM931-8-BA3	1	PC	206623	0				
16	HEX SCREW M12000 DM931-8-BA3	1	PC	17866	0				
15	HEX SOCKET-HEAD SCREW M10050 DM912-8-BA3	1	PC	202077	0				
14	HEXAGONAL SCREW M16X170 DM833-8-BA3	1	PC	16260	0				
13	HEX SCREW M12000 DM931-8-BA3	1	PC	103986	0				
12	HEX SCREW M12000 DM931-8-BA3	1	PC	141463	0				
11	HEX SCREW M12000 DM931-8-BA3	1	PC	193117	0				
10	HEXAGONAL SCREW M16X170 DM833-8-BA3	1	PC	16264	0				
9	HYDRAULIC JACK D18	1	PC	1170633	0				
8	VALETTU ALUPT	1	PC	1026119/10261974	1				
7	BEI RINTE	1	PC	13103642	1				
6	ANAL GAUGE	1	PC	13103648	1				
5	DISC AND SHIRT ASSEMBLY CHR10-12	1	PC	501052627/13101079	1				
4	FACTORY ASSEMBLY CHR10-12	1	PC	501053251/131030818	1				



NOTE: Knife clamps and knife recess to be cleaned before mounting.
Control with dial indicator the position of all disc knife edges by rotating the disc.
Allowed variation max 0,4 mm. Knife gap to be 0,4-0,5 mm to highest knife.

Just for Information!



WOOD PROCESSING

FACTORY ASSEMBLY CHR10-12

FACTORY ASSEMBLY CHR10-12

13.02.4176
11.02.097

501053562

A 1/1

