

# GC / GXC / GMC Series

---

## Granulators



We reserve the right to make technical changes without prior announcement. All rights reserved.

©2022 GENOX RECYCLING TECHNOLOGY (UK) LTD.



[genotech.co.uk](http://genotech.co.uk)

# Configurable Rotor Blade Rows

## GXC Series

The large diameter rotors of the GXC series machines are available with a choice of 5, 7 or 9 rows of rotor blades to suit the specific application. They can therefore achieve the ideal combination of power and cutting efficiency, thus ensuring high throughput volumes and top quality granulated products.



### V-Rotor

Our standard open V-Rotor with forward set blades is suitable for processing most types of material. The V-cutting (chevron) configuration of the forward set blades creates a highly efficient, double shear, scissor cutting action.



### VB-Rotor

The VB-Rotor with rear set blades is intended for lighter duty applications. The greater shear angle achieved by mounting the blade behind the blade holder results in better performance when processing flexible materials such as plastic films.



### C-Rotor

The C-Rotor is a heavy duty, high inertia, semi-closed shaft design which creates a cascade cutting effect. This rotor design is ideal for processing particularly hard or thicker materials, but is also well suited to processing profiles.



### CS-Rotor

The CS-Rotor is a particularly open rotor design which allows more area for the material to fall into between each of the staggered blades. This rotor is ideal when processing hollow & bulky materials.



### GMC-Rotor

The GMC rotor is specially designed for film and winding material. The staggered blades can cut off the material easily. The design of the rotor creates a good air stream go through the chamber, reducing heat build up within the chamber to aid cooling.

# Heavy Duty Granulators

## GXC Series

GXC Series Heavy Duty Granulators with power ratings of 55kw to 315kw are designed for high throughput processing. With a variety of rotor configurations available, these granulators have a wide range of applications including; hollow and voluminous materials (i.e. plastic drums, crates and chairs), flexible materials such as films, woven bags and rubber, tougher materials such as profiles, thick sheets, and other general plastics.



Auxiliary Flywheel



Sound Proof Enclosure



Hydraulic Opening Device



GXC Series				
Model	GXC800	GXC1200	GXC1200T	GXC1600T
Dimension (L x W x H) (mm)	2165 x 1780 x 3090	2165 x 2180 x 3090	2490 x 2270 x 3330	2490 x 2670 x 3330
Hopper Opening (L x H) (mm)	750 x 820	1150 x 820	1150 x 1020	1550 x 1020
Rotation Diameter (mm)	Ø 520	Ø 520	Ø 660	Ø 660
Operation Length (mm)	800	1200	1200	1600
Rotation Speed (RPM)	520	520	520	520
Screen Size(mm)	Ø 12	Ø 12	Ø 12	Ø 12
Number of Rotor Knives	5x2	5x2	7x2	7x4
Number of Counter Knives	3x1	3x2	3x2	3x2
Main Drive (kW)	55~75	75~90	90~132	110~160
Hydraulic Power Pack(kW)	1.5	1.5	1.5	1.5
Weight(kg)	Approx 4400	Approx 5500	Approx 7250	Approx 8500

GXC Series			
Model	GXC1200G	GXC1600G	GXC2000G
Dimension (L x W x H) (mm)	2650 x 2470 x 3900	2650 x 2870 x 3900	2650 x 3270 x 3900
Hopper Opening (L x H) (mm)	1160 x 1150	1560 x 1150	1960 x 1150
Rotation Diameter (mm)	Ø 800	Ø 800	Ø 800
Operation Length (mm)	1200	1600	2000
Rotation Speed (RPM)	480	480	480
Screen Size(mm)	Ø 12	Ø 12	Ø 12
Number of Rotor Knives	9x2	9x4	9x4
Number of Counter Knives	3x2	3x2	3x4
Main Drive (kW)	110~160	160~250	250~315
Hydraulic Power Pack(kW)	1.5	1.5	1.5
Weight(kg)	Approx 9300	Approx 11800	Approx 15500

# Granulators

## GC Series

GC Series Granulators are high speed granulation machines designed especially for the efficient size reduction of various materials in a single pass. These machines are ideal for processing a multitude of materials including plastics, rubber, fibers, copper cable and light non-ferrous metals amongst others.



PVC



PET



GC Series			
Model	GC600T	GC800	GC800T
Dimension (L x W x H) (mm)	1380 x 1170 x 2200	1380 x 1370 x 2200	1580 x 1440 x 2300
Hopper Opening (L x H) (mm)	560 x 615	760 x 615	760 x 615
Rotation Diameter (mm)	Φ320	Φ320	Φ420
Operation Length (mm)	600	800	800
Rotation Speed (RPM)	580	580	580
Screen Size(mm)	Φ12	Φ12	Φ12
Number of Rotor Knives	3x2	3x2	3x2
Number of Counter Knives	2x1	2x1	2x1
Main Drive (kW)	22	30	37
Weight(kg)	Approx 1500	Approx 1800	Approx 3000

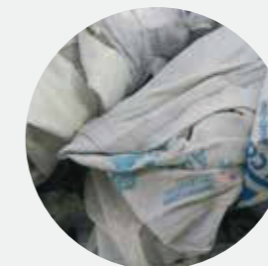
# Granulators

## GMC Series

GMC Heavy Duty Granulators are designed for high throughput size reduction of larger sized products in a single pass. These machines are specifically designed for treating plastic film or PP big bag material of high contamination. Incorporating various different methods of wear protection such as replaceable wear plates and resistant surface coatings, the GMC machines are well suited to processing abrasive, contaminated materials such as glass filled plastics and dirty films containing sands.



PP PLASTIC FILM



PP WOVEN BAG



GMC Series		
Model	GMC800	GMC1000
Dimension (L x W x H) (mm)	2165 x 1780 x 3090	2165 x 1980 x 3090
Hopper Opening (L x H) (mm)	760 x 615	950 x 810
Rotation Diameter (mm)	520	520
Operation Length (mm)	800	1000
Rotation Speed (RPM)	520	520
Number of Rotor Knives	8	8
Number of Counter Knives	2	4
Main Drive (kw)	55	75
Weight (kg)	5580	6180