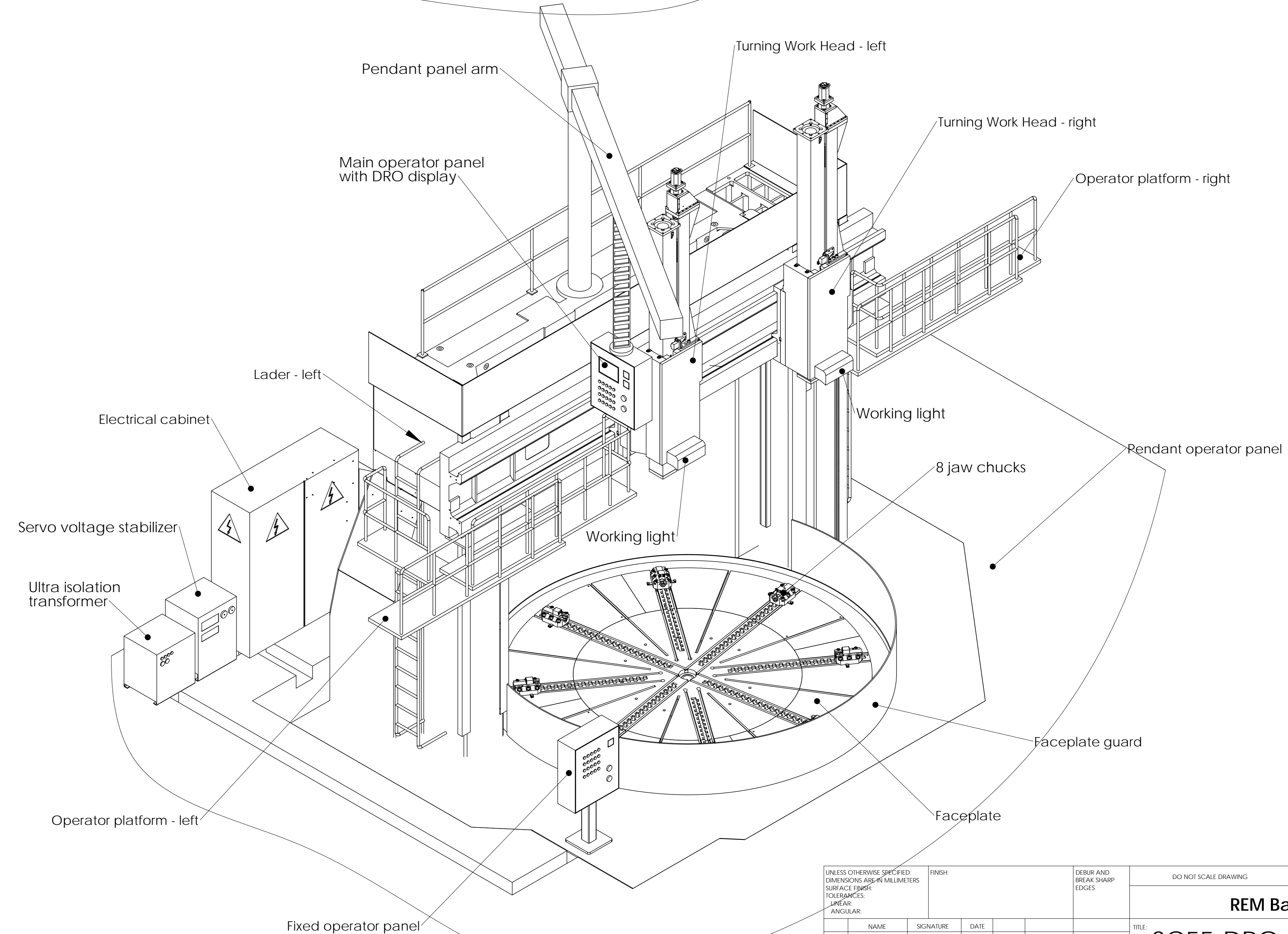
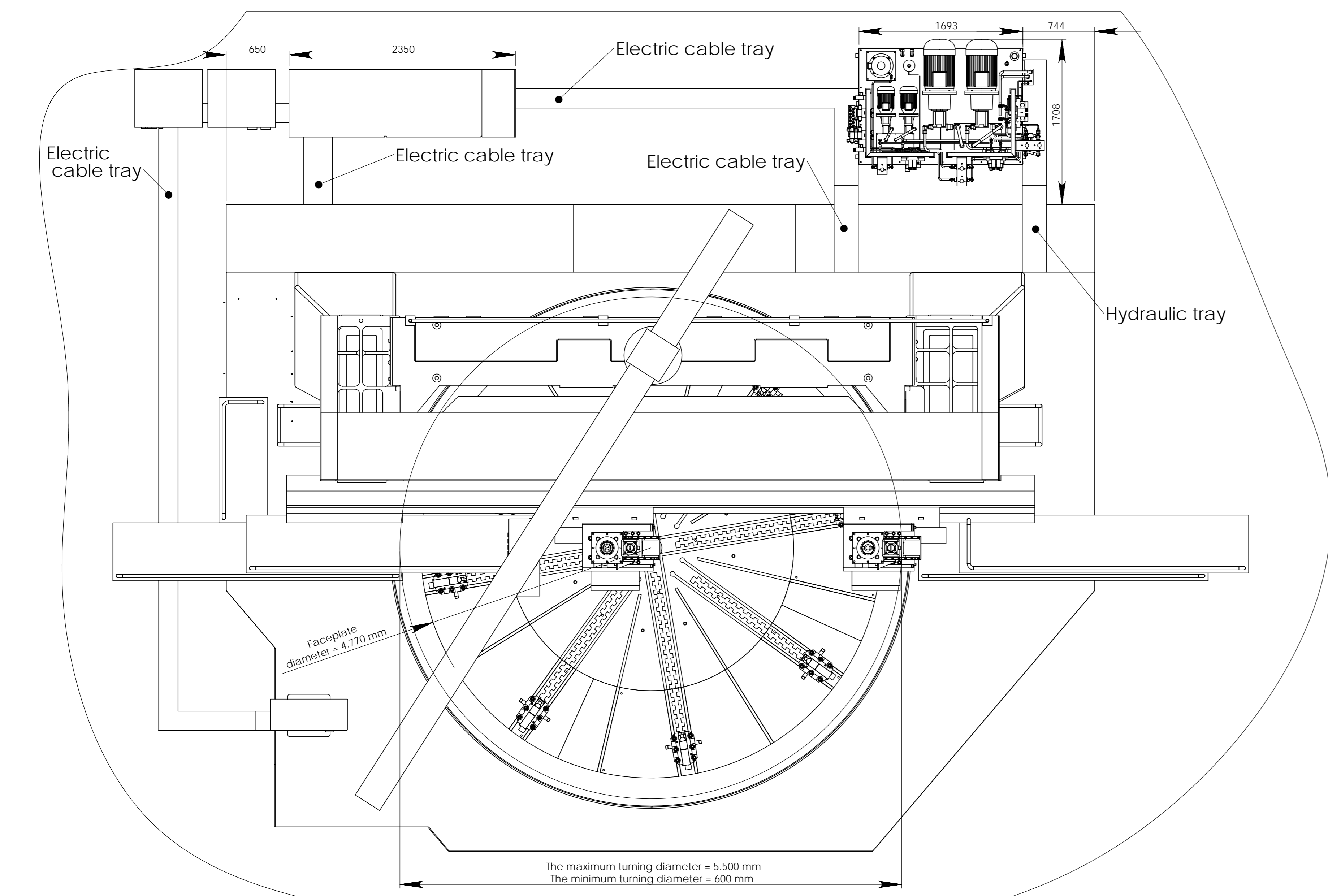
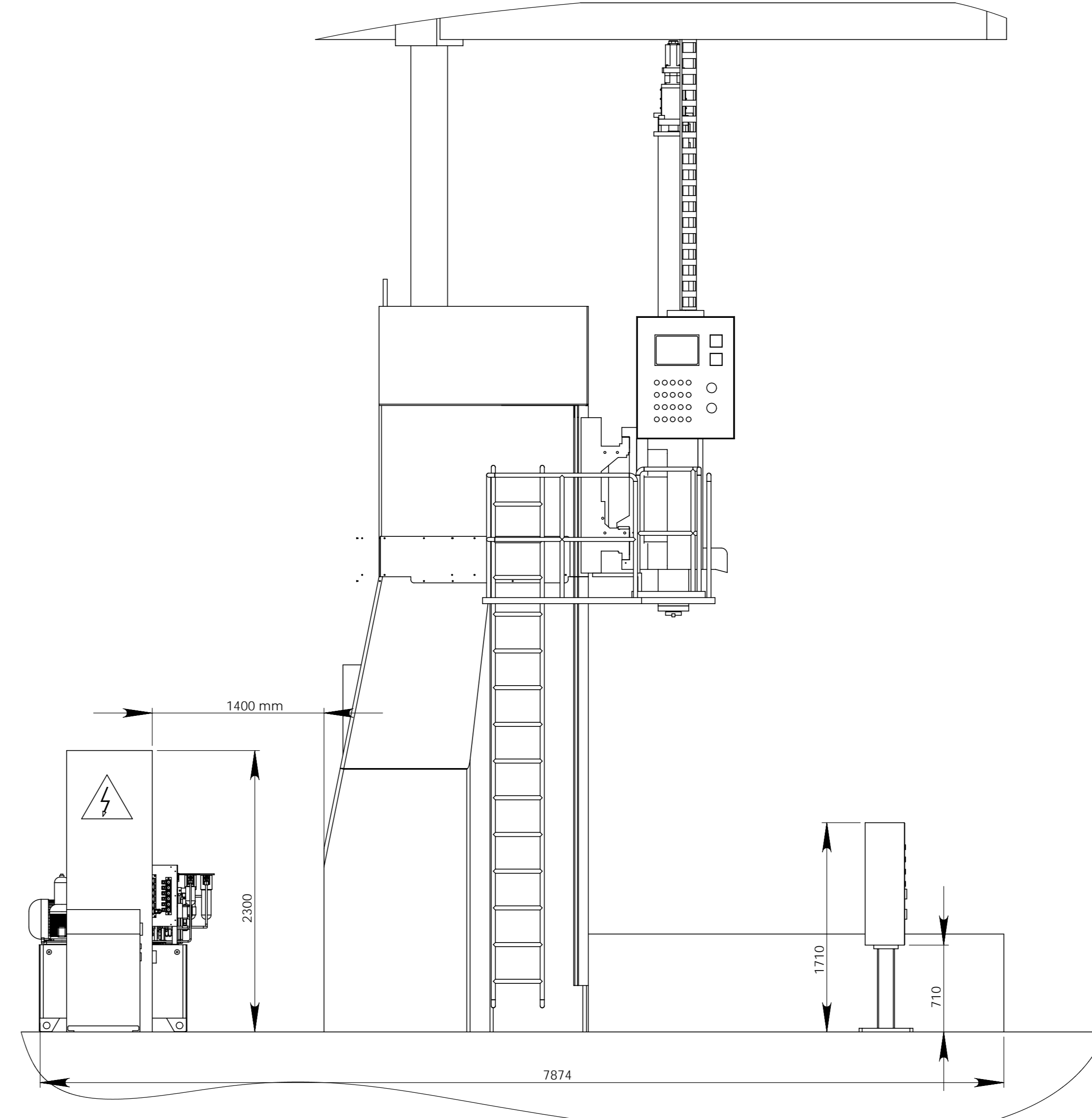


Vertical stroke of the cross-rail
W axle = 2.600 mm



| | | | | | |
|---|--|----------|-----------------------------------|---|----------|
| UNLESS OTHERWISE SPECIFIED: DIMENSIONS ARE IN MILLIMETERS SURFACE FINISH TOLERANCES LINEAR ANGULAR | | FINISH: | DEBUR AND BREAK SHARP EDGES | DO NOT SCALE DRAWING | REVISION |
| DRAWN | | NAME | SIGNATURE | DATE | |
| CHK'D | | | | | |
| APP'VD | | | | | |
| MFG | | | | | |
| Q.A | | | | | |
| | | MATERIAL | | DWG NO. | |
| | | WEIGHT | | SCALE: 1:100 | |
| | | | | REM Bacau TITLE: SC55-DRO-2S-3.5H Layout | |
| | | | | DWG NO. 12551.000.000.1 A1 | |
| | | | | SHEET 1 OF 1 | |