

## 3 x MTU ENGINES FOR COGENERATION ENGINES FOR COGENERATION

### The technical specifications of the cogeneration engines

Manufacturer:	MTU Onsite Enrgy GmbH
Typ:	AoE16V4000L62
Number of units:	3 pieces
Date Built:	2010
• $P_{elec}$ :	1600kW
• $P_{thermic}$ :	1746kW
• $P_{gaz PCS}$ :	4579 kW / $P_{gaz PCI}$ : 4121kW
• U:	400V/50Hz

Machine hours: GE1 - 42479h / GE2 – 13800h / GE3 – 43397h

### Auxiliary equipment:

- Roof-mounted air-cooled unit
- Auxiliary cabinet
- Control cabinet
- Smoke exchanger
- Water exchanger
- Ducts (pipes + ducts) and chimney
- Oil room: 3 tanks + pipes
- Electrical wiring



# 3 x MTU ENGINES FOR COGENERATION ENGINES FOR COGENERATION

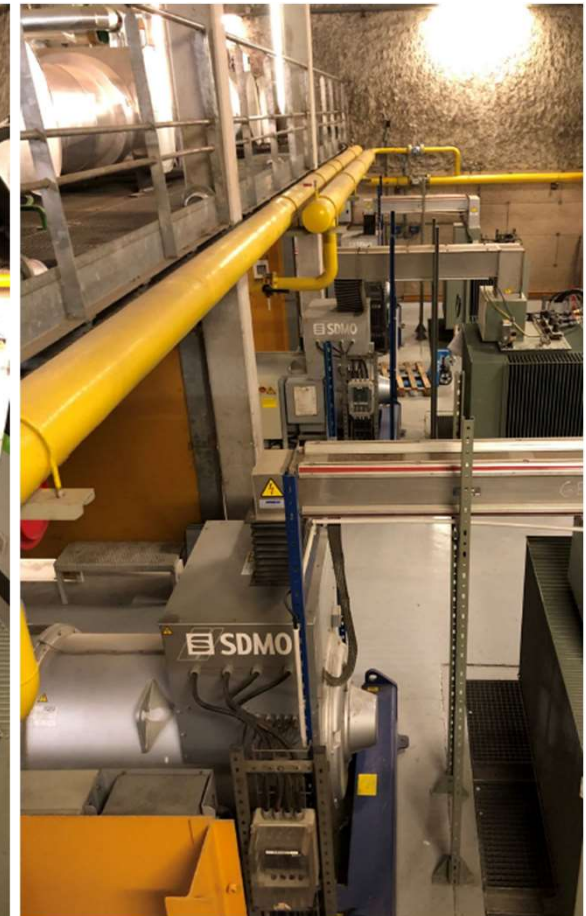
**mtu onsite energy**

**Stromerzeugungsaggregat nach ISO 8528  
 Genset acc. to ISO 8528**

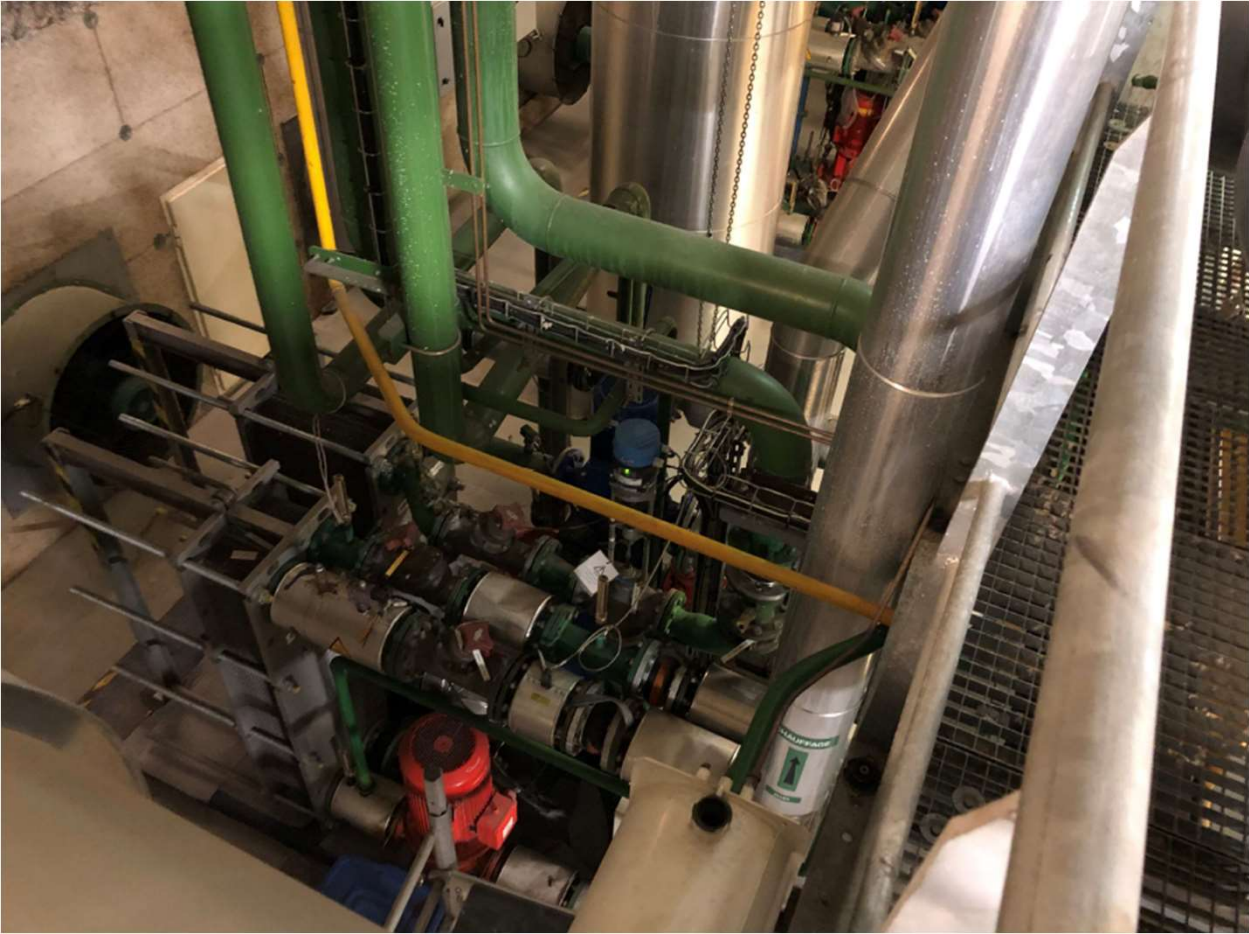
Typ / Type	AoE16V4000L62	Elektrische Leistung am Generator gemessen / Electrical Power at Generator Terminals (kW)	1562
Modul- / Aggregat - Nr. / Module / Genset No.	2808	Thermische Leistung / Thermal Power (kW)	
Projekt Nr. / Project No.	E 21704	Heizwassertemperatur Eintritt / Austritt (°C) / Heating Water Temperature Inlet / Outlet (°C)	
Baujahr / Year of Manufacture	2010	Nennleistungsfaktor / Nominal Rated Power Factor (cos φ)	0.8
Gewicht / Weight (kg)	13000	Nennspannung / Nominal Voltage (V)	400
Heizwasserdruck max. / Heating Water Pressure max. (bar)	6	Nennfrequenz / Nominal Frequency (Hz)	50
Max. Leistungsaufnahme der Verbraucher am Modul / Aggregat Max. Power Consumption for Module / Genset Auxiliaries (kW)	4	Leistungsangaben nach ISO-Standard-Leistung ISO 3046-1 nicht überlastbar Luftdruck (Gesamtdruck) $p_a = 100 \text{ kPa}$ (1000 g N/m <sup>2</sup> ) Lufttemperatur (am Luftfiltereintritt) $T_a = 298 \text{ K}$ (25 °C) Relative Luftfeuchte $\phi = 30\%$ Standard reference conditions, ISO standard power ISO 3046-1 no overload Total barometric pressure $p_a = 100 \text{ kPa}$ (1000 g N/m <sup>2</sup> ) Air temperature $T_a = 298 \text{ K}$ (25 °C) Relative humidity $\phi = 30\%$	

MTU Onsite Energy GmbH  
 Dasinger Str. 11  
 D - 86165 Augsburg

Made in Germany 



# 3 x MTU ENGINES FOR COGENERATION ENGINES FOR COGENERATION



# 3 x MTU ENGINES FOR COGENERATION ENGINES FOR COGENERATION



# 3 x MTU ENGINES FOR COGENERATION ENGINES FOR COGENERATION



# 3 x MTU ENGINES FOR COGENERATION ENGINES FOR COGENERATION



# 3 x MTU ENGINES FOR COGENERATION ENGINES FOR COGENERATION

