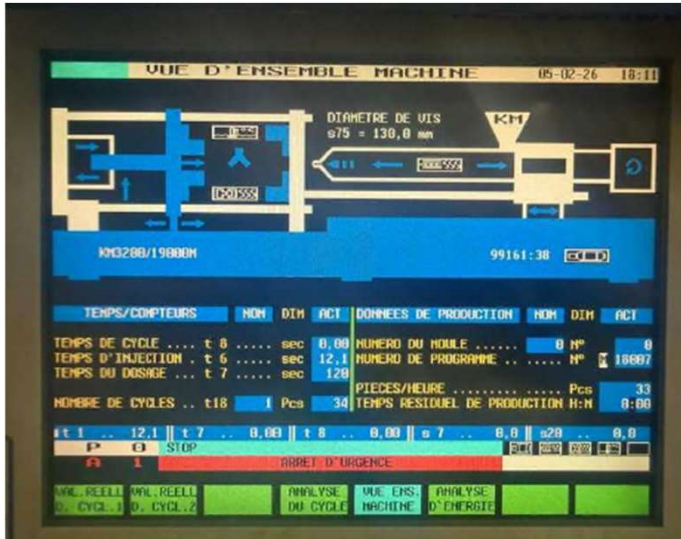


## USED PRESSES - KRAUSS MAFFEI – KM3200 19000MC

- KM3200 19000MC
- IMM MC3F No.12
- Date Built - 1998
- Machine Hour - 99161 h
- Machine Depth: 4900 mm
- Machine Height: 4200 mm
- Machine Weight: 230000 kg
- Clamping Force: 32000 kN
- Max. Shot Weight: 8100g
- Screw Diameter: 130 mm
- Robot Interface: KUKA KRC4
- Sequential Injection Controller: S.I.S.E. IS`Tech
- Thermoregulators: GWK
- Dosing & Blending Motan Colormetric
- Belt Conveyor



## USED PRESSES - KRAUSS MAFFEI – KM3200 19000MC



## USED PRESSES - KRAUSS MAFFEI – KM3200 19000MC

