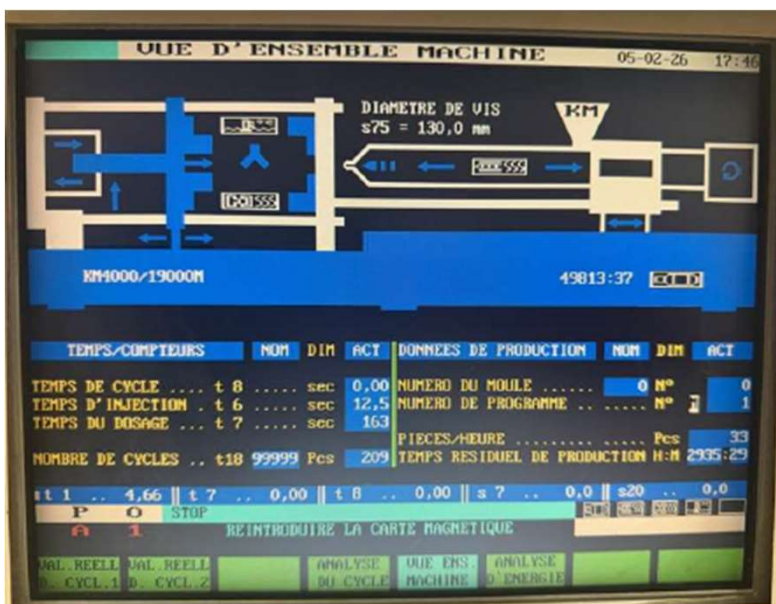


USED PRESSES - KRAUSS MAFFEI – KM4000 19000MC

- KM4000 19000MC
- IMM MC3F No.14
- Date Built - 1998
- Machine Hour - 98806 h
- Machine Depth: 4900 mm
- Machine Height: 4200 mm
- Machine Weight: 255000 kg
- Clamping Force: 40000 kN
- Max. Shot Weight: 8100g
- Screw Diameter: 130 mm
- Robot Interface: KUKA KRC4
- Sequential Injection Controller: S.I.S.E. IS`Tech
- Thermoregulators: GWK
- Dosing & Blending Motan Colormetric
- Belt Conveyor



USED PRESSES - KRAUSS MAFFEI – KM4000 19000MC



USED PRESSES - KRAUSS MAFFEI – KM4000 19000MC

