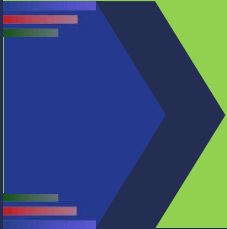




hvac smart  
**HiTEMA**<sup>®</sup>  
international



Our focus is on Natural Refrigerants, Sustainable Technology and Energy Efficiency

MORE THAN

35



YEARS  
OF EXCELLENCE

hvac smart  
**HiTEMA**<sup>®</sup>  
international

Chillers designed for technical cooling applications in Data Centers, Industrial Process and Rental Solutions



# OUR NUMBERS

35 YEARS OF EXPERIENCE

7 PRODUCTION PLANTS

2000 UNITS PER YEAR

85% OF UNITS CUSTOMIZED

30 RANGES OF PRODUCTS

4 SELECTION TOOLS

18.750 sqm INDOOR SPACE

100% ITALIAN MANUFACTURE

90% EXPORT WORLDWIDE

## ABOUT US

HITEMA® INTERNATIONAL is a specialist manufacturer with over 35 years of experience in designing and producing customized Chillers and Heat Pumps for process cooling and industrial comfort applications.

## FUTURE ORIENTED

HITEMA® INTERNATIONAL has expanded its Chiller portfolio with a new Series using not only eco-friendly refrigerants such as HFO R1234ze, but also with low GWP alternatives like R513A, R32, R454B, R454C, R515B and the natural fluid PROPANE (R290), also developing the TURBOCOR Serie with Free Cooling.

## OUR VISION

Our focus is keeping our Customers running 100% of the time.

Our goal is to satisfy the Customers, by offering efficient and reliable solutions.

The keywords that better describe us are customization, efficiency, reliability and sustainability.

# OUR GOAL?

ALWAYS PROVIDE A BETTER COOLING SOLUTION



HITEMA®  
CUSTOMIZED  
ATEX CHILLER II  
2G Ex h IIB T3 Gb  
-20°C < T.amb <  
40°C



HITEMA®  
CUSTOMIZED  
ATEX CHILLER  
II 3G Ex h IIB T3 Gc  
-5°C < T.amb < 60°C  
(Available also with IIC  
T3 configuration)

# OUR KEYWORDS

- Hitema® has over 35 years of experience in the production of Customized chillers and Heat Pumps;
- We have developed advanced High/Low water Temperature Solutions;
- We provide high efficiency Free Cooling Solutions;
- All our solutions are Highly Tailorable
- We have developed Innovative Eco-Friendly Refrigerants Solutions;
- Hitema® manufactures all of its own metal work so that the cabinets are fully customisable;
- Our re-enforced Chillers mainframes are industry leading;
- High quality, reliability and experience;
- Our Goal: continuous improvement of our products and services to always give our Customers a better service;
- Future-oriented market vision;
- We test all our machines with water ranging from +30°C to -25°C;

# OUR CERTIFICATIONS



# MRI

PERFECT FOR MEDICAL APPLICATIONS



- Designed to be used in magnetic resonance imaging;
- Portable, it can be mounted on trucks;
- Working with LOW GWP refrigerant R32;
- Scroll compressor;
- Cooling capacity up to 20kW;
- Can work at full capacity from 0°C up to 45°C;

# WORLDWIDE PRODUCTS

**NO MATTER WHERE YOU ARE,  
WE GOT YOU COVERED**



**OUR PRODUCTS ARE DESIGNED  
TO ENDURE ANY WEATHER  
CONDITIONS AND ARE  
COMPLIANT TO  
INTERNATIONAL  
REGULATIONS, ENSURING THE  
HIGHEST QUALITY**

**OUR EXTENSIVE  
DISTRIBUTORSHIP  
NETWORK CAN ASSIST YOU  
IN SELECTING, MANTAINING  
AND INSTALLING OUR  
MACHINES**



# HIGH PERFORMANCE CHILLERS FOR EVERY INDUSTRY

## DEVELOPED IN 35 YEARS OF EXPERIENCE

### SCROLL

R410A / R32 / R454B



#### MAIN FEATURES:

- Digital Programmable Microprocessor Controller;
- Protection Rating IP54/NEMA 3R;
- BMS connectivity;
- Shell and Tube evaporator;
- Water Gauge;
- High/Low pressure transducers;
- Small Footprint;
- Ecodesign compliant with REGULATION 2016/2281.

### SCREW

R134A / R513A / R1234ZE / R515B



#### MAIN FEATURES:

- Intelligent Controls Optimize Energy;
- Air to Liquid Free Cooling Coils;
- Protection Rating IP54/NEMA 3R;
- Intelligent Variable Load Control (VSD);
- Shell and Tube evaporator;
- Optimized Hybrid Cooling System;
- 2 Years Payback Time for 1 MW Cooling Unit;
- Quick Start / Fast Rump Function achieves full load after a power loss in few minutes;
- E-coating condenser;
- Back to Back Configuration;
- Small Footprint.

### HYDROMODULE

FROM 400 TO 5000L  
TANK



#### MAIN FEATURES:

HYDRO-MODULE series, consists of water storage tank in carbon steel, open frame if only tank/closed frame in galvanized and painted steel if with single/double pump, expansion vessel, automatic filling valve, automatic air vent.

#### AVAILABLE PUMPS CONFIGURATION:

- WP =Single pump P3 with nominal pressure head 3 barg;
- DP =Double pump P3 with nominal pressure head 3 barg;
- PH =Single pump P5 with nominal pressure head 5 barg;
- DPH =Double pump P5 with nominal pressure head 5 barg.

### ICE RINK

R449A



#### MAIN FEATURES:

- Digital Programmable Microprocessor Controller;
- Protection Rating IP54/NEMA 3R;
- High Efficiency Evaporator in stainless steel;
- BMS connectivity;
- Injection Screw Compressors for Low Temperature Application : -30°C/-22°F;
- Low temperatures Refrigerant R449A;
- High/Low pressure transducers;
- Small Footprint;
- Ecodesign compliant with REGULATION 2016/2281.

Top Class Chillers to ensure continuative Cooling

It's time to decarbonize Industry!

Available Options:  
Total customization

**HiTEMA**<sup>®</sup>  
international

# HOW TO DESCRIBE HITEMA<sup>®</sup>

## USING 3 WORDS

35 Years of Experience  
driven by Innovation

### CUSTOMIZATION

At HITEMA<sup>®</sup> we pride ourselves on being able to **manufacture and tailor our equipment** to your needs.

We are able to offer to our Customers a complete range of possibilities of customization, starting from the mainframe of the machines, to the colour and the refrigerants, as well as all the special requirements upon customers/projects demands.

Our **highly flexible manufacturing attitude** combined with our unique ability to build to order, sets us apart from any other company in our industry.

During the last years HITEMA<sup>®</sup> has invested in new facilities, new technologies, new people over 20% of the turnover.

### TRUST

We are truly a trusted Partner for all our Customers.

From our small beginnings nearly 35 years ago we have grown into a Company that sells worldwide.

Our reputation is based on reliability and quality of all our products.

Our dedicated After Sales Department ensure that our Customers are looked after for years to come, whether its technical advice or spare parts we are there for you.

The Technical Department manages the after-sales & spare parts service for all the units: every single request received by the HITEMA<sup>®</sup> International Team is recorded and logged in a "Diary" to improve our products and procedures and to constantly measure customer satisfaction.

### CONTINUOUS IMPROVEMENT

HITEMA<sup>®</sup> is absolutely committed to **continuous improvement**.

This forward thinking mentality is behind all our design philosophies.

This is really the key concept of HITEMA<sup>®</sup> International work philosophy.

Continuous improvement allows us to always have a future-oriented approach, and to always give a better service to our Customers.

**Innovation** is only achievable through knowledge of the past; this enables us to ensure that all our future designs are ground breaking in the industry with the knowledge that they are 100% reliable.

**"The "Thermometer" of our success is the satisfaction of our customers".**

# OUR GREEN APPROACH

Environmental sustainability and high energy efficiency are the goals HITEMA® International strive for when developing our new products. We comply with all relevant standards, and **work ethically** to protect the environment and future generations.

We truly feel responsible for the impact our behaviour has on future generations. We believe in promoting **sustainability** and **circular economy**. We apply this vision internally throughout our Company, as we believe success depends on all individuals sharing the same mindset.

This approach, combined with market forces and standards, has helped us shape our expanded Chiller portfolio.

Our mentality is oriented to eco-friendly solutions, using **LOW GWP refrigerants** like **R1234ze**, or in the HFC family **R513A**, **R32**, **R454B**, and the natural fluid **PROPANE (R290)**, but also developing the new **TURBOCOR** Series.

**FACT: Choosing 1MW R1234ze (GWP=7) 384 tonCo2 saved than R134A (GWP=1430)**

# WE CARE ABOUT THE ENVIRONMENT

# WE BUILD CHILLERS DESIGNED TO LAST

# HITEMA® RENT

high quality - reliability - durability  
choose your custom rental configuration



## OUR OFFER:

- A **complete** range of Chillers and Heat-Pumps both in standard and special configuration;
- Special configuration for rental with **lifting eyelets** available and **strong mainframe** for the handling of the machines;
- High **efficiency** solutions;
- Packaged **Coaxial Evaporator** thickness 0,7 mm available until 200kW or Shell and Tube evaporator thickness 0,7 mm;
- A wide range of **customized** applications;
- Dedicated **Hydro-Module** manufactured by Hitema® available for rental;
- Expert technical and after sales support which will help you, proposing the most suitable solution to meet your needs;

Cooling  
Heating

# THE RELIABLE CHILLER SOLUTION FOR INDUSTRIAL PROCESS



LGX/LGXF

Air Cooled

①

1,6kW ÷ 440kW



CSE

Air Cooled

①

30kW ÷ 377kW



CFT

Air Cooled

①

7,9kW ÷ 410kW



ENR-IR

Air Cooled

④

8kW ÷ 100kW



ENRC

Condenserless

①

7,4kW ÷ 375kW



HNR

Air Cooled

①

14kW ÷ 107kW  
16kW ÷ 117kW



ENW

Water Cooled

①

3kW ÷ 400kW



CFTW

Water Cooled

①

50kW ÷ 371kW

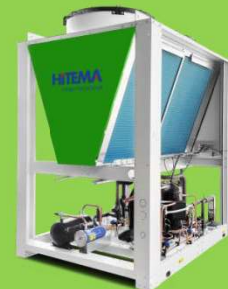


HFTW

Water Cooled

①

100kW ÷ 400kW  
80kW ÷ 370kW



SBS-HP

Air Cooled

①

55kW-72kW-92kW  
60kW-78kW-97kW



HFT

Air Cooled

①

15kW ÷ 326kW  
16kW ÷ 345kW



CFTC

Condenserless

①

50kW ÷ 370kW



MTC

Evaporatorless

①

8kW ÷ 375kW



- ① R410A/R32/R454B
- ② R134A/R513A; R1234ZE/R515B
- ③ R290
- ④ R449A
- ⑤ R454C

# CUSTOMIZED FOR YOU

with more than 100 OPTIONS  
available to customized your Chillers

Cooling  
Heating



SBS / SBSF / SBSF-OPT

SBS-MC

NOVA / NOVAF

DTS / DTSF / ISV / ISVF

EWB

Air Cooled

①

94kW ÷ 1288kW

Air Cooled

①

95kW ÷ 180kW

Air Cooled

②

266kW ÷ 2136kW

Air Cooled

②

266kW ÷ 2136kW

Water Cooled

②

291kW ÷ 2240kW



CWB

TFV/TFVF

TFW

APC<sup>®</sup>

APC<sup>®</sup> / APH<sup>®</sup>

HYD

Condenserless

②

291kW ÷ 2240kW

Air Cooled

②

250kW ÷ 1215kW

Water Cooled

②

250kW ÷ 3000kW

Air Cooled

③; ⑤

8kW ÷ 50kW

Air Cooled

③

50kW ÷ 330kW  
60kW ÷ 370kW

Hydromodule

400L ÷ 5000L



**MOBUS CONTROLLER**

Sensor name	Legend Name	Sensor Value	Record	Plot	Water probe
Probe 1	T1 - EWIT	44.0	<input checked="" type="checkbox"/>	<input checked="" type="checkbox"/>	<input checked="" type="checkbox"/>
Probe 2	T2 - LWI	6.8	<input checked="" type="checkbox"/>	<input checked="" type="checkbox"/>	<input checked="" type="checkbox"/>
Probe 3	TAMS		<input type="checkbox"/>	<input type="checkbox"/>	<input type="checkbox"/>
Probe 4	Probe 4		<input type="checkbox"/>	<input type="checkbox"/>	<input type="checkbox"/>
Probe 5	Probe 5		<input type="checkbox"/>	<input type="checkbox"/>	<input type="checkbox"/>
Probe 6	Probe 6		<input type="checkbox"/>	<input type="checkbox"/>	<input type="checkbox"/>

Control: K20SKCiv

Fluid: WATER

CP: 4201 043 Density: 999 913

Spec. Number: / Spec. Year: /

Serial Number: /

**RECORD DATA**

Read Period: 1 s

SAVE RECORDED DATA

From: 0 s To: 531 s

Test read

Message:

Cooling Capacity: 4341 kW Water Flowrate: 1 m<sup>3</sup>/h

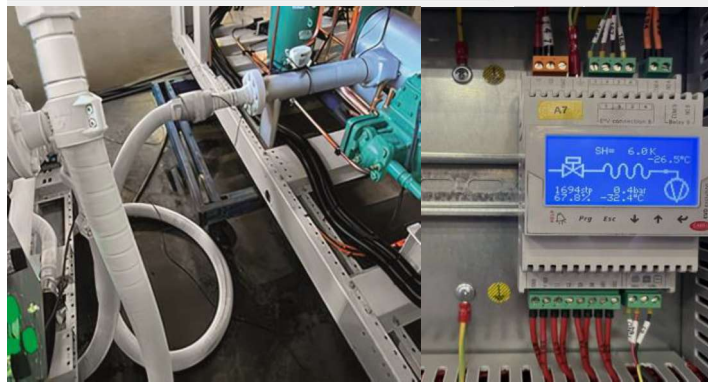
**CHART**

# HITEMA<sup>®</sup> FAT TEST AREA

All of the equipment we produce are personally tested one by one by our skilled Test engineers.

Prior to shipment we check and ensure that the Units run perfectly from day one so that our Customers can receive **the highest level of quality** from our machines.

Due to our philosophy of continuous improvement we can ensure that our systems have fewer issues than any other manufacturer on the market. We even offer **remote FAT testing** on all our Chillers if required.



FAT Test down to -30°C

Our commitment to quality and Customer Service drives increased time between component failures. Our year on year drive to reduce downtime and increase reliability is key to our success.

**Our customers, in real time, can attend their Chiller Test.**

# HITEMA<sup>®</sup> SELECTION SOFTWARE

hvac smart  
**HITEMA**  
international

MORE THAN **35** YEARS

4.1.0 (ACCORDING TO EN 14511)

My Projects

Selection tools    Technical catalog    Company Profile

---

**GENERAL DATA**

Applications: Aircooled

Selection By: Model B Performance

Units: S.I.

Power Frequency: 50 Hz

**MODEL**

Series: TPV

Model: 1215

Refrigerant: R513A

**PERFORMANCE DATA**

Cooling Capacity: 1000 kW

Fluid Flow Rate: 210.13 m<sup>3</sup>/h

Ambient Temperature: 35 °C

Elevation a.s.l.: 1000 m

Fluid: ethylene glycol

Glycol Percentage: 40 %

Entering Water Temperature: 12 °C

Leaving Water Temperature: 7 °C

*DATA CENTER APPLICATION range: Air-cooled liquid chillers, single or multiple oil free turbocor compressor, flooded evaporator or Hybrid film evaporator, condenser with copper tubes and aluminium finned core.*

Our Selection Software allows to save time to find the cooling solution that best suits your needs and location. Thanks to the user-friendly interface, our interactive tool enables you to easily and quickly visualize your custom-made chiller and to download the technical selection report and quote.

## Key features:

- ✓ **200** optionals to choose from
- ✓ **Detailed** technical datasheet
- ✓ Price preview **included**
- ✓ **Quick** selection based on a single criteria

# ALWAYS INNOVATING HITEMA<sup>®</sup> TURBOCOR CHILLERS

## MAIN FEATURES:

- Intelligent Controls **Optimize Energy**;
- Air to Liquid **Free Cooling Coils**;
- Oil Free **Turbocor** Compressors;
- **EC** type Fans to reduce power consumption and noise;
- **Optimized** Hybrid Cooling System;
- Very **Fast Payback**;
- **Quick Start** Function achieves full load after a power loss in few minutes;
- Optimized **Flooded Evaporator**;
- Small Footprint;
- Safety Class **A2L**;
- Eco-Friendly Refrigerant **R1234ze** (GWP=7);
- **V-Shape** Condenser;
- **Economizer** to increase compressor efficiency.



Flooded Evaporator Oil-Free Centrifugal Compressors Air- Cooled/Free Cooling Chillers specifically designed for Data Center Application

Air Cooled and Free Cooling extra large Chillers

Available Options:  
Total customization

**HITEMA**<sup>®</sup>  
international

hvac smart

**HITEMA**<sup>®</sup>

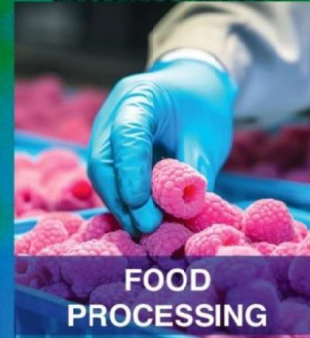
international

hitema.com

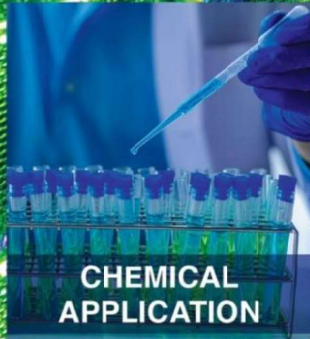
CHILLER



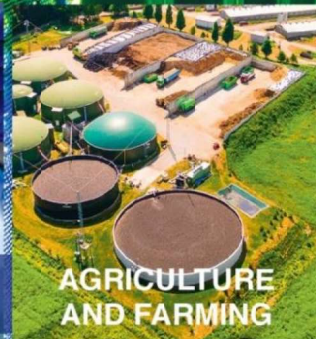
PLASTIC PROCESS



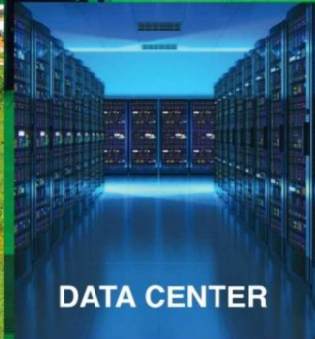
FOOD PROCESSING



CHEMICAL APPLICATION



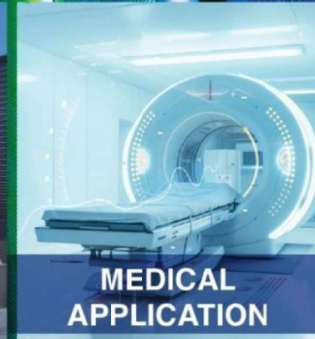
AGRICULTURE AND FARMING



DATA CENTER



AIR CONDITIONING



MEDICAL APPLICATION



MACHINE TOOL



WINERIES

HITEMA<sup>®</sup> INTERNATIONAL S.R.L.

HEADQUARTERS:

Via Mons. G. Babolin, 14 - 35024 - Bovolenta - Padova (ITALY)

Telephone: +39 0495386344

Follow us on our Social Network.

Let's Connect!



CONTACT US!

Information and support:

[customer.care@hitema.it](mailto:customer.care@hitema.it)

Executive Director:

[burbam@hitema.it](mailto:burbam@hitema.it)