

3.6.2022



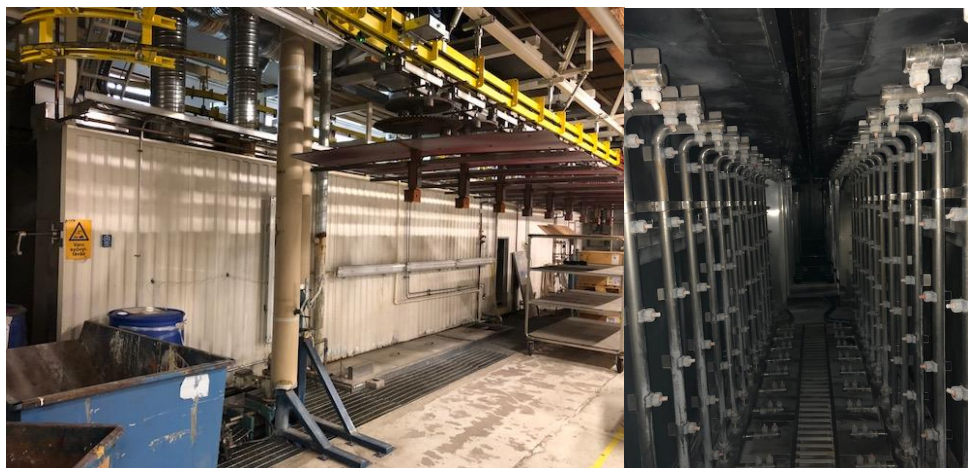
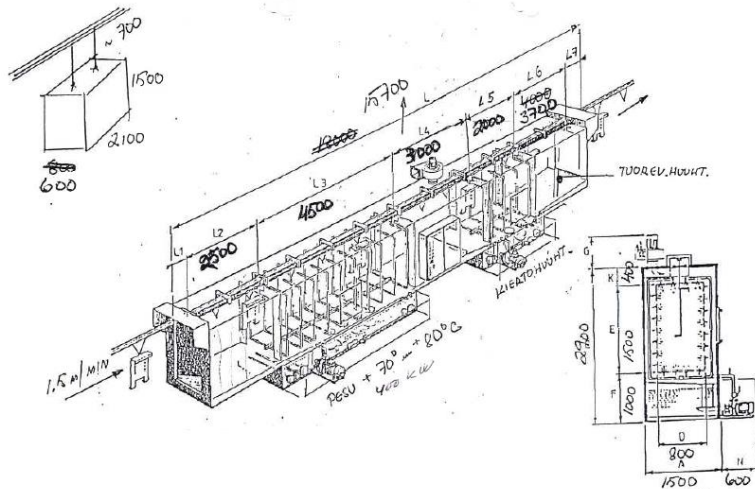
Artekno's second production facility : hood moulding + robot paint shop is located at address Aakkulantie 52-54, Kangasala, Finland.

In last years there has not been production.

Artekno has made a decision that machinery will be sold.

LISTING OF PAINT SHOP MACHINES TO BE SOLD:

1. Powerwash - Washing line.



- Washing line is designed to be continuous, conveyor speed 0,7-3 m/min.

3.6.2022

- Tunnel is from stainless steel surfaced elements. welded structure. Pools also stainless steel surface welded elements.
- Pipelines and valves PVC-material, adjustable and turnable.
- Automatic surface control.
- Washing in two phases (2+1)
 - phase 1. Washing chamber with heating (heated with circulating water)
 - phase 2. Flushing with water. Also with fresh water in the end when water is from Prominent-reverse osmosis machine.

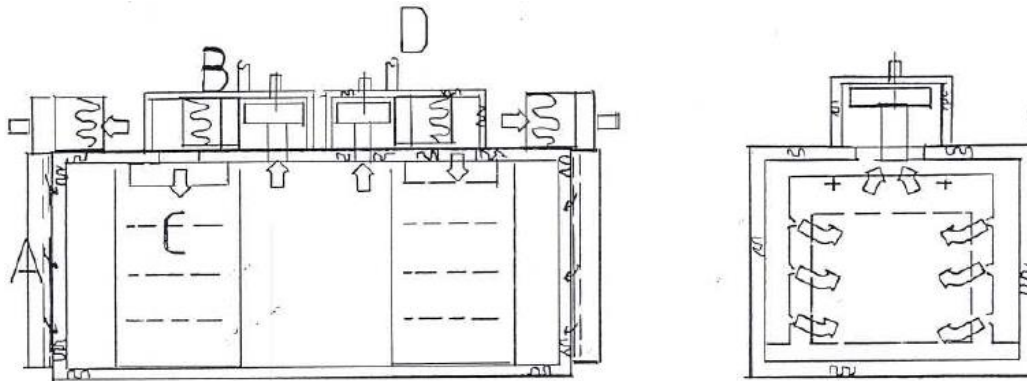
2. Water Treatment devices. Prominent Mangane and Salt deletion machines Ecopro 300



- ProMinent ProMaqua Dulcosmose® -reverse osmosis machine

3. Water drying oven. Sasmetor MT-I, model 1996.

3.6.2022

**MT-I TUNNELIUNNI**

-KIERTOILMAUUNI ILMAVERHOIN
JA KONEELLISELLA POISTOLLA

Uunin kuorirakenne eriste-elementeistä, sisäpuoliset
kanavoinnit st:n terästä.

- A Ilmaverhosulku molemmissa päätyaukoissa,
suodatetulla halli-ilmalla
- B lämpöyksikkö 2 kpl katolla
-eristetty kuorirakenne
-kiertoilmapuhallin moottoreineen
-lämpuolen ilmansuodatin
-lämmityspatteri
-kärynpöistoliitäntä säätöpellein
- C kiertoilmapuhalluskanava puhallussälein
- D poistoliitäntä

sasmetor
suomalaiset
maalaaamot

sasmetor oy
PL 20
18101 HEINOLA - FINLAND
PUH/TEL 918 182 775 VAIHDE
FAX 918 182 761



- Ovens depth 11000mm and width 3000mm. Steel construction.
- Inside galvanized steelplate, 100mm insulation (rock wool), outside plastic surfaced steel plate.
- Oven waterheated, heating capacity 120kW.
- Circulated air amount 30000m³/h, fan 8kW

4. Painting chamber 1. Sasmetor, model 1996.

- Apair AK-wet painting chamber
- Steel plate structure, ventilation devices (3+3kW), with filtering.
- Connection capacities: heated water 100kW, electricity 8kW ja compressed air.
- Chamber's measures: width 3000mm, length 3500mm and height 3000mm (free space, floor height 600mm)

5. Robot 1 – ABB 580 (IRB0580-02-0133)

3.6.2022



- Robot has been in use 2002-2007 and in Artekno 2009-.
- ABB IRB 580 painting robot to ATEX-area
- Control unit.
- Two spray guns in holder.
- Paineistettukaapeli
- 2 pcs Crescocoito –spray guns

6. Paint control machine Magu MST 2200 2-K



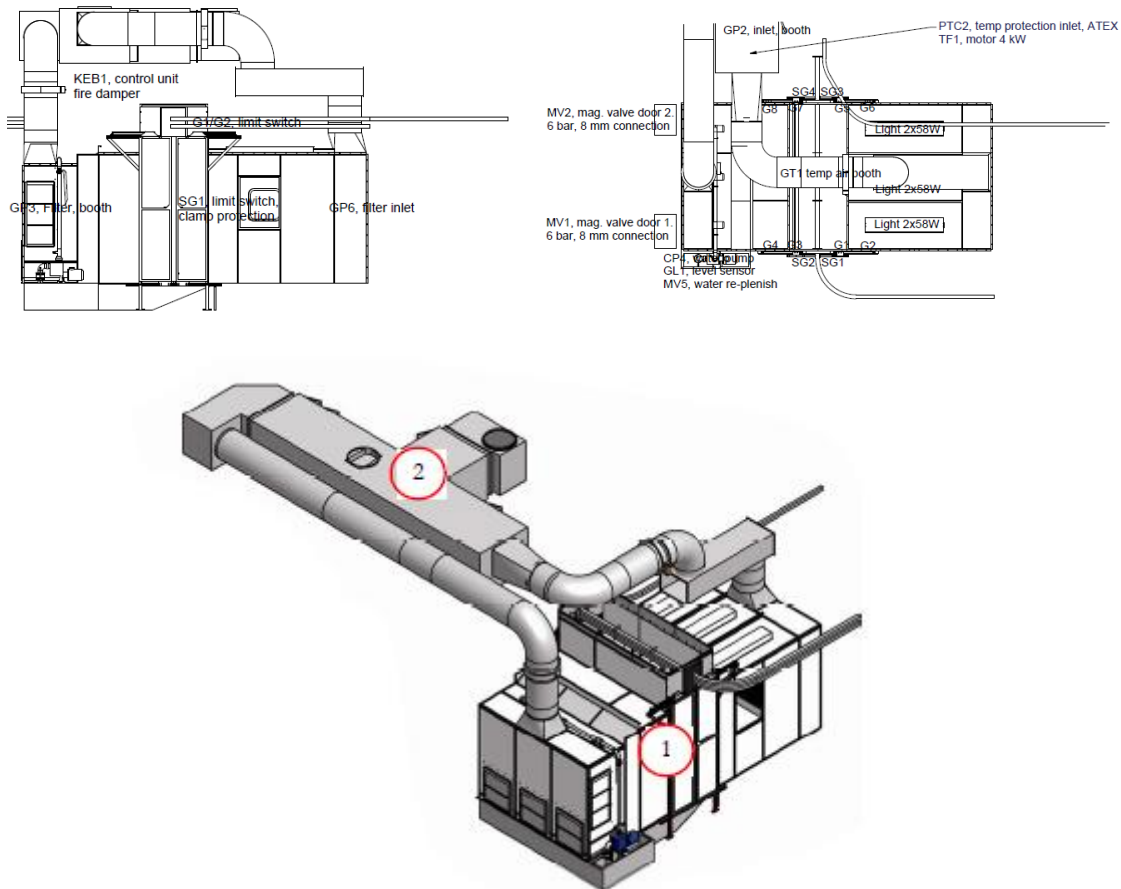
- Logic based Magu MST 2200 2-K machinery.
- MST 2200 mixes components in wanted ratio and controls output.
- Colorvalves for 8 colors and 2 pumps.

7. Paint drying oven. MT-I Sasmetor, Vm. 1996

- Water heated, inside EX.
- Width 3000mm, length 10200mm and height about 2800mm.
- 2000mm length evaporation area, after this tunnel.
- Oven temperature has been in use about +70°C.
- Price 15000€

8. Painting chamber no2. Greiff Krub 300, model 2010

3.6.2022



- Ventilation: Greiff Aggregate Top 130, input and output 9720 m³/h, filtering.
- Width 3100mm, depth 6400mm and height 2650mm.
- Steel plate construction, filtering parts stainless steel, others galvanized. Painted to white. Doors and corners red. Pneumatic doors in line



9. Robot 2 – ABB 580

- Like in poin5

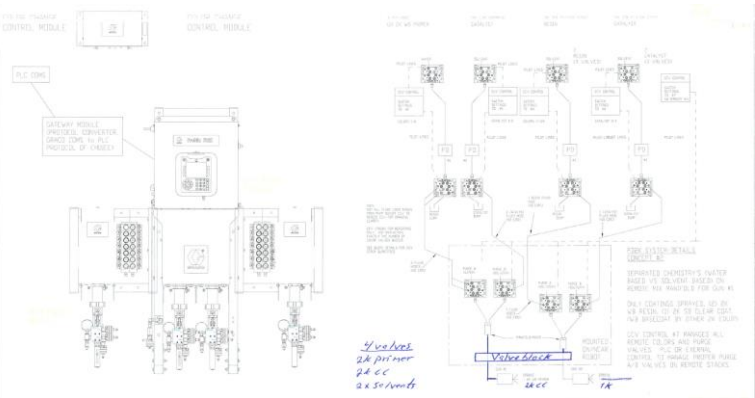
3.6.2022

- IRB0580-02-0134



10. Paint control unit Grago Promix PD2K Automatic

3.6.2022



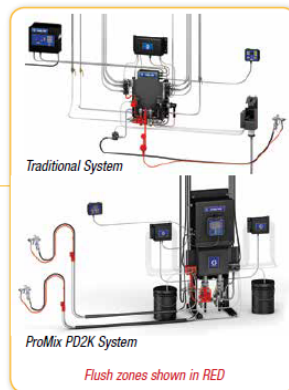
Reduce Solvent and Material Waste by up to 80%

The ProMix PD2K saves you time and money by not only making your job easier, but by reducing material waste. It's efficient, convenient and gives you a smooth, consistent spray for your most challenging applications.

Savings Comparison

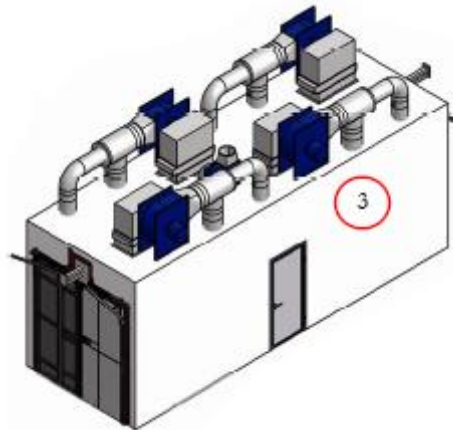
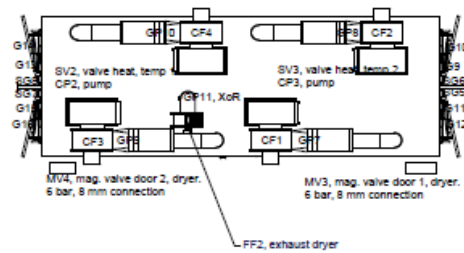
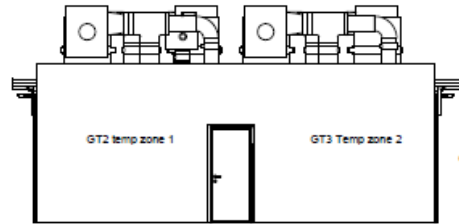
See the savings stack up when you compare the ProMix PD2K to traditional systems.

- Up to 80% reduction in flushing waste over the most efficient traditional proportioning systems
- Limited mixed material in system - great for short pot life materials
- Faster color changes and less material to flush mean less waste and less downtime



- 4 pumps and dual mixers
- 2K-system
- Automatic color change system

3.6.2022



- Painted steel, insulation 100mm.
- In oven heating units to heat and circulate the air. 4x30kW.
- Heating with water.
- Width 2400mm (inside), 3000mm(outside), inside length 10400mm (outside 10600mm) and height 3600mm (inside) 3800mm (outside)

3.6.2022



- 1 pc RST pressure tank to hardener, with hoses
- 1 pc thinner pump and 2 paint pressure control's
- 8 pcs paintpumps with return adjuster
- 8 pcs Stainless steel tanks
- 1 set of paint hoses from pump room to robots valves and backwards

13. Middle ovens (2pcs) behind robots.



- Air driers conected.
- Robot 1 tunnel (2xZiehl-fan + Cotes CR600 –dryer)
 - 315mm tube
 - Fan 1: 6700m³/h (55Hz)
 - Fan 2: 6000m³/h (55Hz)
 - Oven: 7,2m x 3,3m x 2,5m = 59,4m³
- Robot 2 tunnel (3xCKS560- fan + Cotes CR600 – dryer)
 - 315mm tube
 - Fan 1: 6125m³/h (50Hz)
 - Fan 2: 5300m³/h (50Hz)
 - Fan 3: 5700m³/h (50Hz)
 - Fans: Systemair CKS-560 3,6kW 1359rpm

14. Conveyors

- Schierholz ja VDB Concept

15. All existing Paintshops metal stuctures and wall panels (not including buildings structures).