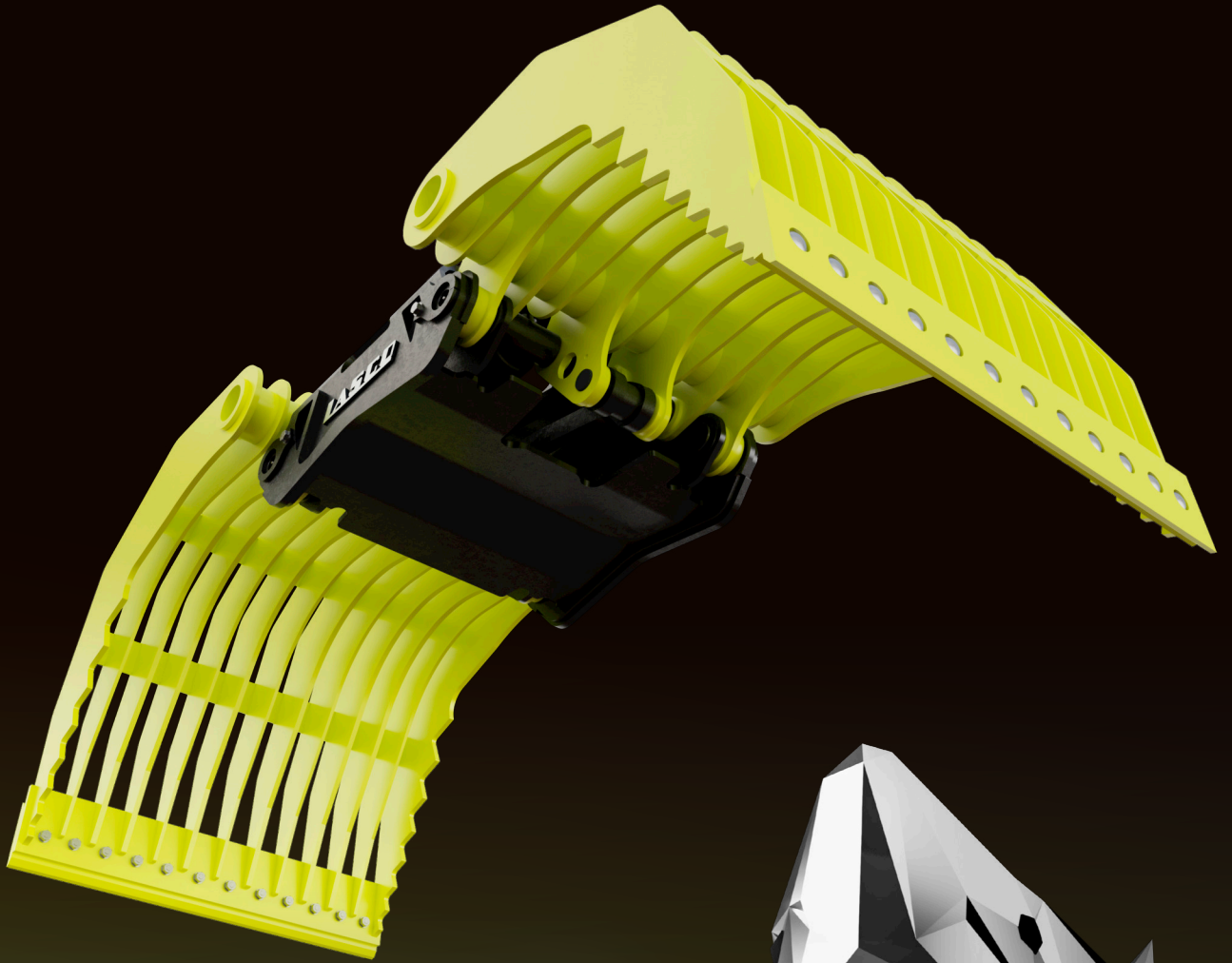


**LASCO**



# DEMOLITION AND SORTING GRAPPLES



*TECHNOLOGY FOR HEROES.*



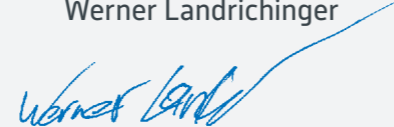
At Lasco, we have spent the last four years working intensively to develop a grapple series that is not only strong, robust, versatile and flexible, but also meets the high demands of our customers. These characteristics were not only daily companions during the development phase, but have always been firmly anchored in the DNA of our company. With a proud 35-year company history and 20 years of experience in the design and manufacture of attachments such as cone splitters and forestry grapples, including for professional use in the excavator sector, we at Lasco always focus on quality and innovation.

The new LAGrip series is the result of our tireless efforts to design demolition and sorting grapples specifically tailored to different excavator tonnages. Thanks to their versatility, these grabs are able to handle a wide range of materials - from scrap and wood to plastics and demolition waste - with a very high level of safety and reliability.

If you are looking for a demolition and sorting grapple that not only impresses with its strength and robustness, but also with its adaptability and ability to handle a wide range of materials, then we invite you to give the LAGrip series a try. Discover how our decades of experience and commitment to innovation can make your work more efficient and effective.

LASCO - Technology for Heroes

Johannes Landrichinger  


Werner Landrichinger  


## POSSIBLE APPLICATIONS

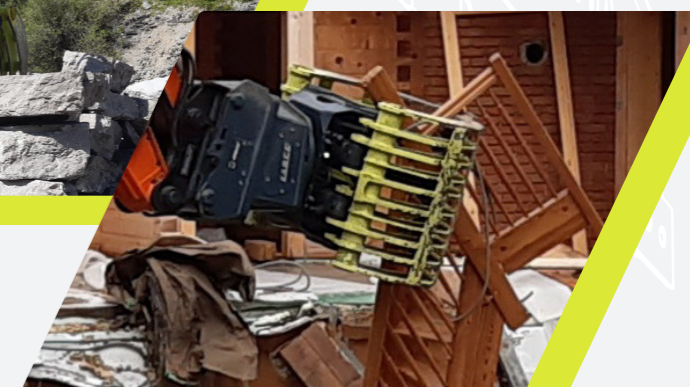
EARTHWORKS & DEMOLITION



GARDEN & LANDSCAPING



RECYCLING



**BITE DOWN - JUST AS HARD AS A SHARK.**

**STRONG. ROBUST. VERSATILE. FLEXIBLE.**

Just like sharks, LASCO demolition and sorting grapples can withstand extreme loads in challenging environments. With the precision of a shark bite, LASCO grapples deliver an unimaginable performance.



## SOME ADVANTAGES

**INCREASED DURABILITY AND ROBUSTNESS**



Up to 20% more highly wear-resistant steel than conventional demolition and sorting grapples - increases durability.

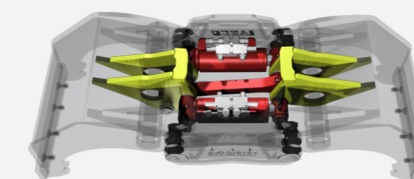
**TOP PRIORITY: SAFETY**



Direct mounting of the load-holding valve on the cylinder. Risk of hose breakage 100% eliminated. Tongs remain securely closed.

The above-average closing force of the tongs and the shark teeth integrated as standard also ensure that the material picked up is held securely.

**OPTIMUM FORCE DISTRIBUTION**



The ingenious symmetrical arrangement of the cylinder and parallel rod distributes the force evenly.

Mechanical stops protect and increase the stability of the cylinders.



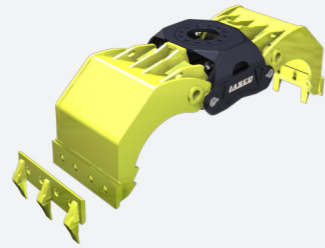
# LASCO DEMOLITION AND SORTING GRAPPLES

LAGrip Closed shell with serration

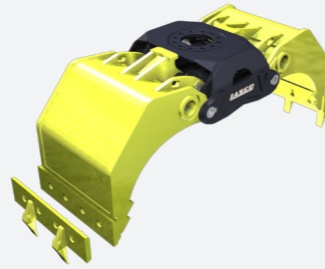
LAGrip 09A.045



LAGrip 18A.065



LAGrip 26A.078



\* Seitenblech optional

Type	Art-No.	operating weight (t)	Opening-width (mm)	Shell width (mm)	Weight (kg)	Grapple volume (l)	Grapple closing force (kN) at operating pressure	Operating pressure (bar)
LAGrip 09A.045	132837	6 - 9	1280	450	315	100	25	300
LAGrip 18A.065	132841	10 - 20	1900	650	750	335	30,9	300
LAGrip 26A.078	132846	16 - 26	2100	780	1125	520	49,5	300

LAGrip Grid shell with wear blade

LAGrip 09B.045



LAGrip 18B.084



LAGrip 26B.078



LAGrip 26B.102



Type	Art-No.	operating weight (t)	Opening-width (mm)	Shell width (mm)	Weight (kg)	Grapple volume (l)	Grapple closing force (kN) at operating pressure	Operating pressure (bar)
LAGrip 09B.045	132838	6 - 9	1355	455	305	110	25	300
LAGrip 18B.084	132844	10 - 20	2100	845	1100	530	30,9	300
LAGrip 26B.078	132852	16 - 26	2200	780	1245	620	49,5	300
LAGrip 26B.102	132851	16 - 26	2200	1020	1435	830	49,5	300

LAGrip perforated shell with wear blade

LAGrip 09C.045



LAGrip 18C.084



LAGrip 26C.078



LAGrip 26C.102



Type	Art-No.	operating weight (t)	Opening-width (mm)	Shell width (mm)	Weight (kg)	Grapple volume (l)	Grapple closing force (kN) at operating pressure	Operating pressure (bar)
LAGrip 09C.045	132839	6 - 9	1355	455	295	110	25	300
LAGrip 18C.084	132845	10 - 20	2100	845	870	530	30,9	300
LAGrip 26C.078	132849	16 - 26	2200	780	1125	600	49,5	300
LAGrip 26C.102	132850	16 - 26	2200	1020	1340	830	49,5	300



# LASCO SLEWING RINGS AND ROTATORS

As the saying goes: „A chain is only as strong as its weakest link“. For this reason, our rotators meet the same quality criteria in terms of workmanship and reliability as our other machines. This is the only way to ensure that the „chain“ remains reliable and strong!

As a defect in the rotator delays or even stops most work, we rely on well-known leading and renowned manufacturers in Northern Europe.

The following rotators have passed our selection process and are ideally suited in combination with our carrier machines.

LDK535\_1



LDK535\_2



ARH70



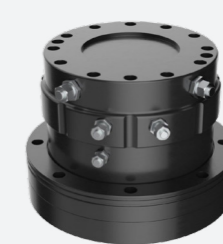
ARB80



ARB120



ARB150



ARB200



Type	Art-No.	Torque at 140 bar (Nm)	max. turning(bar)	optimal turning oil flow rate (l/min)	net-weight(kg)	Installation height (mm)	excavator operating weight (t)	LAGrip Grapple
LDK535_1	132475	4000	140	75	ca. 400	220	10 - 22	LAGrip 18 - 26
LDK535_2	117380	5900	140	75 - 100	ca. 410	220	10 - 22	LAGrip 18 - 26

Type	Art-No.	Torque at 320 bar (Nm)	max. turning(bar)	optimal turning oil flow rate (l/min)	net-weight(kg)	Installation height (mm)	excavator operating weight (t)	LAGrip Grapple
ARH70	130638	2800	320	25	49	215	3 - 6	LAGrip 09
ARB80	130698	3000	320	25	77	185	6 - 9	LAGrip 09
ARB120	132498	3800	320	25	92	228	7 - 13	LAGrip 09
ARB150	130639	3800	320	25	164	272	10 - 20	LAGrip 18
ARB200	132854	4200	320	25	168	277	15 - 26	LAGrip 18 - 26





**LASCO**

**LASCO**

**LASCO Heutechnik GmbH**

Lascostraße 1, A-4891 Pöndorf | Telefon: +43 [0]7684 / 21666-0  
E-Mail: [office@lasco.at](mailto:office@lasco.at) | [www.lasco.at](http://www.lasco.at)

131544 | Version C | State 2024

Subject to change without notice. Printing and typesetting errors reserved. Pictures and drawings schematic only.