

CURING OVENS ELECLINE

DESIGNED FOR
MAXIMUM
EFFICIENCY



proton

MASCHINENBAU GMBH

DESIGNED TO ACHIEVE HIGH
EFFICIENCY AT LOW OPERATING
COSTS AS A RESULT OF
ENGINEERING STUDIES AND YEARS
OF EXPERIENCE.

“ MANUFACTURED IN ACCORDANCE
WITH EUROPEAN STANDARDS ON SAFETY,
ISOLATION AND AUTOMATION. ”

POWERFUL, ECONOMICAL,
DURABLE!

These are electrostatic powder paint curing ovens used in manual systems. It is suitable for small capacity businesses.

Ovens, which are modular in design, are very easy to assemble and disassemble.

Although it has panels providing insulation on the floor, it provides an entrance with the floor with wheel entry channels that can be adjusted at desired intervals.

Top blowing bottom suction type circulation applied. Special designed air channels provides homogeneous air distribution.

Suitable for bar transfer systems.

| MODEL | INSIDE-OUT DIM (MM) | | | CIRCULATION FAN KW/H | HEATING POWER KW/H |
|------------------|---------------------|-----------|-----------|-------------------------|-----------------------|
| | WIDTH | HEIGHT | LENGHT | | |
| ELECLINE 12-1519 | 1200-1480 | 1500-1900 | 1500-2200 | 0,75 | 18 |
| ELECLINE 12-2019 | 1200-1480 | 1500-1900 | 2000-2700 | 0,75 | 24 |
| ELECLINE 12-2519 | 1200-1480 | 1500-1900 | 2500-3200 | 1,5 | 24 |
| ELECLINE 12-3019 | 1200-1480 | 1500-1900 | 3000-3700 | 1,5 | 36 |
| ELECLINE 12-3519 | 1200-1480 | 1500-1900 | 3500-4200 | 1,5 | 48 |
| ELECLINE 12-4019 | 1200-1480 | 1500-1900 | 4000-4700 | 2,2 | 48 |

CURING OVENS

ELECLINE

DESIGNED FOR
MAXIMUM
EFFICIENCY

proton
MASCHINENBAU GMBH

Automatic chimney smoke exhaust

A chimney can be programmed to open a few minutes before the end of the firing, in order to empty the chamber from the smoke. It can be remotely controlled from the panel, you do not need to do this mechanically as in most construction.



Safe Working

Thanks to the safety thermostat against overheating, you will not encounter adverse situations, it protects your machine and your workplace.



Automatic Stop & Cooling

Digitally enter the curing temperature and curing time, just press Start. When the oven process is finished, it sounds the warning horn, automatically stops and cools itself automatically.



Easy Loading

Thanks to the wheel channels at the same level with the ground, you can easily push the trolley into the oven. You can choose the most suitable loading system for loading the workpieces in the furnace.



Lower carts



Rails in the floor



Upper tracks

The doors which automatically snap (optional)

To open them just pull the door. The lock has adjustable door pressure to close them - only need to push the door. The lock automatically will catch the door to shut them well



Paddle box (optional)

In order to minimize the effect of heating the hall when the oven door is opened, above the doors is mounted hood for outflow heat to a specific location.



PID Heating Control (optional)

PID is a system in which, by adjusting the voltage at the setpoint temperature, the heating power that is currently needed is selected - minimizing the effect of temperature fluctuations.



PID
control

SPRAYBOOTH

BOOTHLINE-FL or CY

DESIGNED FOR
MAXIMUM
EFFICIENCY



proton

MASCHINENBAU GMBH

Easy to Use
Quick Color Change
Minimum paint loss
Easy assembly and disassembly

BOOTHLINE Manual Powder Coating booths are especially suitable for jobs with a small area or limited capacity and without robot painting.

The suction systems and body design are designed in a way that prevents the powder paint from going outside the cabin. In the construction of these cabinets, powder painted sheet metal, stainless steel or galvanized sheet metal can be used according to request.

The booth can be easily disassembled and assembled with a socket wrench.

The dimensions of the Manual Powder Coating Booths are specially determined according to the size of the product to be painted.

“ MANUFACTURED IN ACCORDANCE WITH EUROPEAN STANDARDS ON SAFETY, AIR FLOWRATE AND AUTOMATION. ”

POWERFUL, ECONOMICAL,
DURABLE!

| MODEL | INSIDE-OUT DIM (MM) | | | FILTERED (-FL) | | CYCLONED (-CY) | |
|------------------|---------------------|-----------|-----------|----------------|-----------------|----------------|-------|
| | WIDTH | HEIGHT | DEPTH | FILTER QTY. | VACUUM FAN KW/H | DEPTH | KW/H |
| BOOTHLINE - 800 | 530-800 | 1450-2265 | 1250-1800 | 1 | 1,5 | 1765-1800 | MC-9 |
| BOOTHLINE - 1200 | 930-1200 | 1450-2265 | 1250-1800 | 2 | 2,2 | 1765-1800 | MC-9 |
| BOOTHLINE - 1500 | 1230-1500 | 1450-2265 | 1250-1800 | 3 | 3 | 1765-1800 | MC-17 |
| BOOTHLINE - 2000 | 1730-2000 | 1450-2265 | 1250-1800 | 4 | 2,2 * 2PCS | 1765-1800 | MC-17 |
| BOOTHLINE - 2400 | 2130-2400 | 1450-2265 | 1250-1800 | 5 | 2,2 * 2PCS | 1765-1800 | MC-26 |
| BOOTHLINE - 3000 | 2730-3000 | 1450-2265 | 1250-1800 | 6 | 3 * 2PCS | 1765-1800 | MC-26 |

SPRAYBOOTH

BOOTHLINE-FL or CY

DESIGNED FOR
MAXIMUM
EFFICIENCY

proton

MASCHINENBAU GMBH

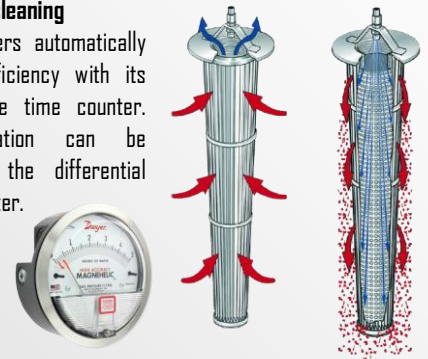
Filter or Cyclone connection

Filtered cabinets require a flue connection. For this reason, in areas where a chimney connection is difficult, BOOTHLINE-CY models with mono cyclone integrated are preferred. The number of filters or Cyclone size in the cabin is determined by the cabin size.



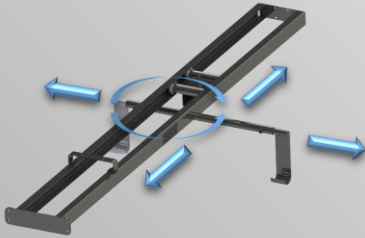
Automatic filter cleaning

It cleans the filters automatically and with full efficiency with its digitally adjustable time counter. Filter contamination can be monitored with the differential pressure manometer.



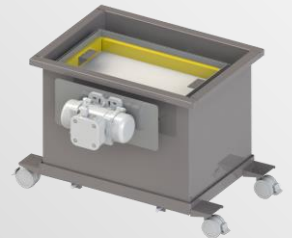
Conveyor or Hanger

It can be integrated into bar transfer conveyor systems. With the models with ears, the product can be passed inside the cabin with a hanger. Standard models have 360 degree rotating and movable hanging equipment.



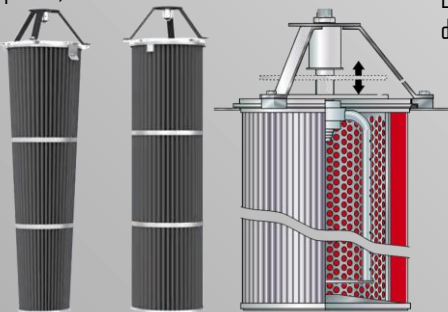
Automatic Sieve and Recycling (optional)

With the optional automatic sieve system, the used paint is sieved and returned directly to the paint gun and can reuse again.



Conic Filters and Cleaning Wings (optional)

Painting booths can be equipped with longer life conical filters instead of standard filters. In standard cabins, the filter cleaning system is of the nozzle type. High efficiency rotary wing cleaning system can be added optionally.



Exproof Parts (optional)

Ex-proof fan, inverter speed control, ex-proof lighting and flame detector can be integrated into the cabins optionally.



Body Shape Options

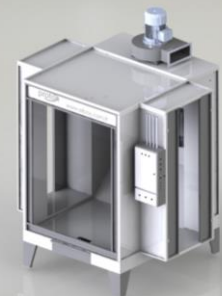
There are different models for different shaped work pieces.



STANDARD



BASELESS



EARED

PAINT STRIPPING TANKS BSK

DESIGNED FOR
MAXIMUM
EFFICIENCY



proton

MASCHINENBAU GMBH

Easy to Use
Clean Environment
Fast Solution

Paint stripping tanks are used in powder paint and wet paint plants to easily and safely remove the paint on the hanging apparatus with paint accumulation over time, and the materials that have been painted in the wrong color or need to be changed.

These tanks, which are produced as heated, can work with various chemicals. Waste accumulation may differ depending on the chemical it works with.

It is produced from highly corrosive acid resistant material. The outside is covered with shiny stainless steel. We have standard models in various sizes. It can also be produced in larger sizes upon request.

Its hinged cover prevents steam from spreading to the work area. Discharge process is provided with a stainless ball valve.

Our paint stripping tanks produced in accordance with European standards are CE certified.

Higher comfort can be achieved with various ancillary equipment.

“**MANUFACTURED IN ACCORDANCE
WITH EUROPEAN STANDARDS ON SAFETY
AND EFFICIENCY.**”

**POWERFUL, ECONOMICAL,
ENVIRONMENT FRIENDLY!**

| MODEL | OUT DIM (MM) | | | USABLE DIMENSIONS (MM) | | | VOLUME | RIMS (24") | HEATING POWER |
|-------------------|--------------|-------|-------|------------------------|-------|-------|--------|------------|---------------|
| | LENGHT | WIDTH | DEPTH | LENGHT | WIDTH | DEPTH | LT | CAPACITY | KW/H |
| BSK-600-700*700 | 1100 | 1000 | 1100 | 600 | 700 | 700 | 294 | 2 | 8 |
| BSK-1200-700*700 | 1700 | 1000 | 1100 | 1200 | 700 | 700 | 588 | 4 | 16 |
| BSK-1200-1400*700 | 1700 | 1700 | 1100 | 1200 | 1400 | 700 | 1176 | 8 | 32 |
| BSK-1400-400*700 | 1900 | 700 | 1100 | 1400 | 400 | 700 | 392 | 2 | 10 |
| BSK-1800-700*700 | 2300 | 1000 | 1100 | 1800 | 700 | 700 | 882 | 6 | 24 |
| BSK-2400-700*700 | 2900 | 1000 | 1100 | 2400 | 700 | 700 | 1176 | 8 | 32 |

PAINT STRIPPING TANKS

BSK

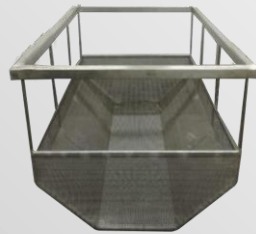
DESIGNED FOR
MAXIMUM
EFFICIENCY

proton

MASCHINENBAU GMBH

Immersion Basket

The workpieces to be paint removed are placed in the tank with a stainless basket. The number and shape of the basket can be arranged upon request.



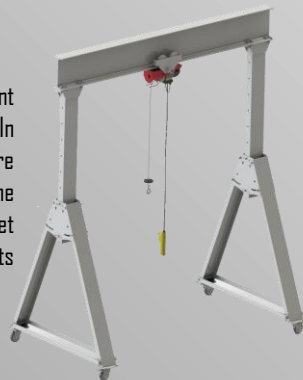
Drip Tray (Optional)

It can be placed in front of the tank so that chemical and paint residues on the workpiece removed from the tank do not drip onto the work area floor. It has swivel and locked wheels. The chemical accumulated in it can be transferred into the tank with its stainless valve. A stainless steel pump can optionally be added for this, or the tray is lifted over the tank with the aid of a forklift and emptied using the valve.



Crane Pillar and Crane (Optional)

The workpieces are immersed in the paint stripping tank with a stainless basket. In order to raise and lower this basket, there should be a crane system on the tank. The portable crane foot allows to lift the basket and move it to the desired area thanks to its rotating wheels.



Mixer (Optional)

The stainless mixer that can be placed in the tank ensures that the chemical in the tank works more efficiently and for a long time.



Automatic thermostat

It keeps the chemical inside at a constant temperature with its automatic thermostat. The digital time counter warns the working personnel by signaling at the end of the process.



Stripping booth (Optional)

The workpiece whose paint has softened should be cleaned with pressurized water after it is removed from the tank. This cleaning process should be done in a special cabinet to prevent environmental pollution. This cabin can be placed in the desired area thanks to the movable and locked wheels underneath. The waste paint is separated from the waste liquid with the wire screen protector before the waste valve.



Piston cover (Optional)

In our standard models, tank covers have gas springs. When you manually lift the cover, it pulls itself up. But we also offer pneumatic piston. Thanks to this piston, you can easily open and close the tank cover with the joystick located on the side of the tank.



Hood (with Exproof Fan) (Optional)

Thanks to this hood system, which can be mounted on the paint stripping tank, the spread of odor into the work area is prevented. With the ex-proof fan, all kinds of flammable solvents are safely removed.



MANUAL SANDBLASTING CABINETS SV-LINE

DESIGNED FOR
MAXIMUM
EFFICIENCY



proton

MASCHINENBAU GMBH

Easy to Use
Clean Environment
Fast Solution

A blast cabinet is an effective way to clean, deburr, finish and prep a wide range of materials. No matter which type of media you're using (aluminum oxide, glass beads, silicon carbide, plastic beads, or organic materials, etc.), Blast cabinets designed for continuous blasting will undoubtedly increase your production and lower your costs by replacing those manual, labor intensive operations like sanding, chemical cleaning, acid etching, wire brushing, and deburring.

Injection Shot Blasting Machine has an injection system that sprays the sandblasting consumable mixture with a specific weight of less than 4 g / cm³ to the surface in order to achieve the desired surface quality and in addition to the vacuum effect created by the compressed air during spraying, the speed of the consumable material in the sandblasting line can be increased and decreased by means of the injector. It defines the system with CE certificate and Dust Spread report.

Here at Elboy, we have a wide range of blast cabinets for your specific application, including light blast booths in various sizes, heavy pressure shot blast booths, wet blast booths and more.

MANUFACTURED IN ACCORDANCE
WITH EUROPEAN STANDARDS ON SAFETY
FILTRATION AND EFFICIENCY.

POWERFUL, ECONOMICAL,
ENVIRONMENT FRIENDLY!

| MODEL | OUT DIM (MM) | | | USABLE DIMENSIONS (MM) | | | AIR CONSUMPTION | NOZZLE DIA. | ELECTRIC |
|---------|--------------|-------|--------|------------------------|-------|--------|-----------------|-------------|----------|
| | LENGHT | WIDTH | HEIGHT | LENGHT | WIDTH | HEIGHT | LT/MIN | MM | W |
| SV-900 | 950 | 1150 | 2000 | 900 | 700 | 720 | 1200 | 8 | 380 |
| SV-1000 | 1100 | 1250 | 2000 | 1000 | 800 | 750 | 1200 | 8 | 380 |
| SV-1300 | 1400 | 1450 | 2100 | 1300 | 1000 | 1000 | 1200 | 8 | 380 |
| SV-1800 | 1900 | 1450 | 2100 | 1800 | 1000 | 1000 | 1200 | 8 | 380 |

** Sandblasting consumables with a specific gravity of less than 4 g / cm³ can be used. (Aluminum Oxides, Glass Spheres, Silicon Carbides, Garnet etc.)
Materials with specific gravity above 7 gr / cm³ such as Steel Shot / Grit and Stainless Steel Shot / Grit cannot be used.

MANUAL SANDBLASTING CABINETS SV-LINE

DESIGNED FOR
MAXIMUM
EFFICIENCY

proton

MASCHINENBAU GMBH

Two sided doors

There are lockable doors on both sides of the booth, that allow workpieces to enter the booth easily. To close the door, you just have to push it. The lock will catch the door itself. In addition, it provides high security with locking clamps.



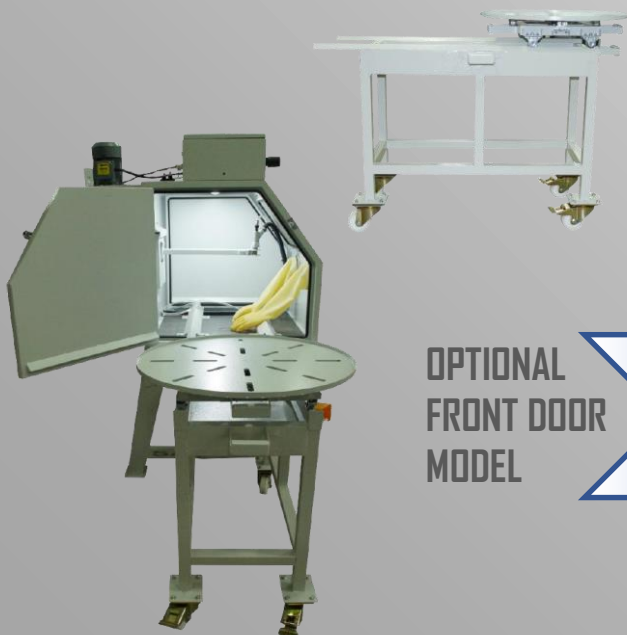
Double Regulator

Injection system has a secondary regulator that allows adjusting the amount of sand as well as adjusting the compressed air used during operation by the regulator.



Rotary Table (Optional)

Blast your products more comfortably with a 65cm diameter manual rotary table that can enter from the cabinet side door.

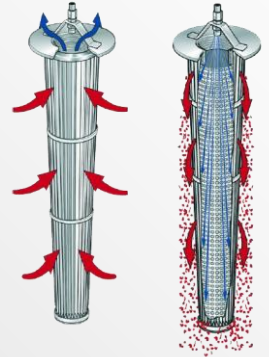


OPTIONAL
FRONT DOOR
MODEL



Automatic filter cleaning

There is a self-cleaning Jet Pulse system with a 1 micron porous cartridge that allows the air to be pressed into the machine to be filtered out.



Uninterrupted work

The machine allows uninterrupted operation by recycling the consumables used automatically during operation.



Nozzles And Sandblasting Guns

The machine package includes an 8 mm Boron Carbide Nozzle and an Aluminum Sandblasting Gun with 4.2 mm injectors as standard. These guns operate at 1.2 m³ / min air consumption value.



POWDER COATING SPRAYGUN SET YB-500

DESIGNED FOR
MAXIMUM
EFFICIENCY



proton

MASCHINENBAU GMBH

POWERFUL, ECONOMICAL,
ENVIRONMENT FRIENDLY!

MULTI-COLOUR



STANDARD



Spray all powders with ease, coat complex geometries with outstanding efficiency and quality and do it all in the most challenging environments.

This paint gun set has a body designed with a stronger and stable structure.

Handles any powder

Today, you're faced with the challenge of spraying a multitude of colors and chemistries. ELBOY Y-B-500 gives you the power and control needed to achieve the best looking finish with any powder.

Optimum ergonomics

The light-weight, ergonomically designed gun provides better in-hand balance and feel allowing you to comfortably position the gun for better coverage and faster coating.

These units bear something...

Industrial strength one piece gun body design, die-cast pump, and steel construction cart provides unparalleled toughness and durability that stand up to any coating environment.

No matter which conditions

No matter where you are, you'll be coating perfectly with the new ELBOY Y-B-500. Whether operating in heat or cold, under dry or humid conditions, ELBOY Y-B-500 delivers outstanding functionality and performance required for any coating environment.

POWDER COATING SPRAYGUN SET YB-500

DESIGNED FOR
MAXIMUM
EFFICIENCY



proton

MASCHINENBAU GMBH



MANUFACTURED IN ACCORDANCE
WITH EUROPEAN STANDARDS ON SAFETY,
QUALITY AND AUTOMATION.



| ELBOY Y-B-500 Pneumatic Data | |
|--|-----------------------|
| MAX.input pressure | 10bar |
| MIN.input pressure | 6bar |
| Input pressure (Dynamic based on pressure regulator setting) | 5.5 bar / 80 psi |
| Max.water vapor content of the compressed air | 1.3g/Nm ³ |
| Max.oil vapor content of the compressed air | 0.1mg/Nm ³ |
| Max.compressed air consumption | 8Nm ³ /h |



| ELBOY Y-B-500 Electrical Data | |
|--|------------------------|
| Nominal input voltage | 110V240VAC |
| Frequency | 50-60Hz |
| Connected load (without vibrator) | 140 VA |
| Nominal output voltage (to the gun) | eff.10 V |
| Nominal output current (to the gun) | max. 1.2 A |
| Connection and output for vibrator (on Aux output) | 110/230 VAC max. 100 W |
| Connection for rinsing function (valve) | 24 VDC max. 3 W |
| Temperature range | 0°C - +40°C |
| Max. surface temperature | 120 °C (+248 °F) |
| Approvals | II 3 D IP54 120 °C |



| ELBOY Y-B-500 | Dimensions |
|---------------|------------|
| Width | 460mm |
| Depth | 862mm |
| Height | 1105mm |

POWDER COATING SPRAYGUN SET PC-200

DESIGNED FOR
MAXIMUM
EFFICIENCY

proton

MASCHINENBAU GMBH

POWERFUL, ECONOMICAL,
ENVIRONMENT FRIENDLY!

Spray all powders with ease, coat complex geometries with outstanding efficiency and quality and do it all in the most challenging environments.

This paint gun set has a body designed with a stronger and stable structure.

Handles any powder

Today, you're faced with the challenge of spraying a multitude of colors and chemistries. PC-200 gives you the power and control needed to achieve the best looking finish with any powder.

Optimum ergonomics

The light-weight, ergonomically designed gun provides better in-hand balance and feel allowing you to comfortably position the gun for better coverage and faster coating.

These units bear something...

Industrial strength one piece gun body design, die-cast pump, and steel construction cart provides unparalleled toughness and durability that stand up to any coating environment.

No matter which conditions

No matter where you are, you'll be coating perfectly with the new PC-200. Whether operating in heat or cold, under dry or humid conditions, PC-200 delivers outstanding functionality and performance required for any coating environment.



POWDER COATING SPRAYGUN SET PC-200

DESIGNED FOR
MAXIMUM
EFFICIENCY



proton

MASCHINENBAU GMBH



MANUFACTURED IN ACCORDANCE
WITH EUROPEAN STANDARDS ON SAFETY,
QUALITY AND AUTOMATION.



| ELBOY PC-200 Pneumatic Data | |
|--|-----------------------|
| MAX.input pressure | 10bar |
| MIN.input pressure | 6bar |
| Input pressure (Dynamic based on pressure regulator setting) | 5.5 bar / 80 psi |
| Max.water vapor content of the compressed air | 1.3g/Nm ³ |
| Max.oil vapor content of the compressed air | 0.1mg/Nm ³ |
| Max.compressed air consumption | 8Nm ³ /h |



| ELBOY PC-200 Electrical Data | |
|--|------------------------|
| Nominal input voltage | 110V240VAC |
| Frequency | 50-60Hz |
| Connected load (without vibrator) | 140 VA |
| Nominal output voltage (to the gun) | eff.10 V |
| Nominal output current (to the gun) | max. 1.2 A |
| Connection and output for vibrator (on Aux output) | 110/230 VAC max. 100 W |
| Connection for rinsing function (valve) | 24 VDC max. 3 W |
| Temperature range | 0°C - +40°C |
| Max. surface temperature | 120 °C (+248 °F) |
| Approvals | II 3 D IP54 120 °C |



| ELBOY PC-200 | Dimensions |
|--------------|------------|
| Width | 550mm |
| Depth | 600mm |
| Height | 1105mm |

