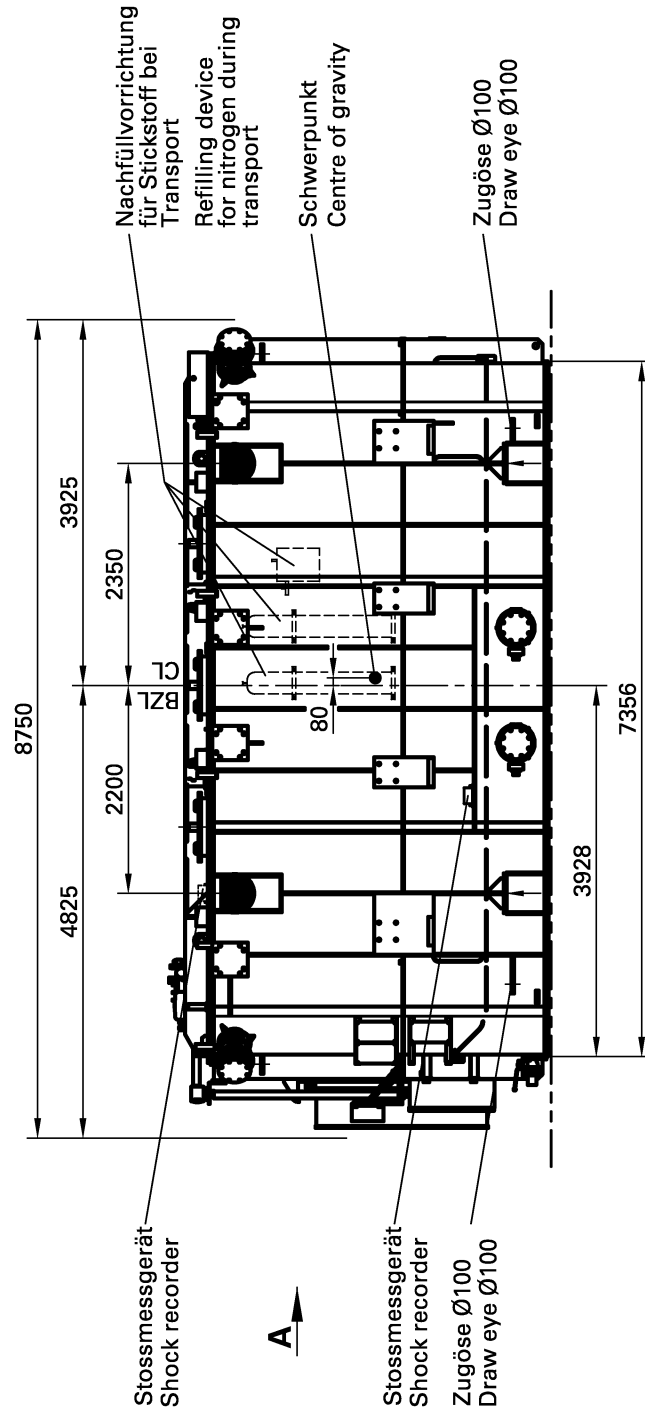


ine reproduction, transmission or use of this document or its contents is not permitted without express written authority. Offenders will be liable for damages. All rights, including rights created by patent grant or registration of a utility model or design, are reserved.

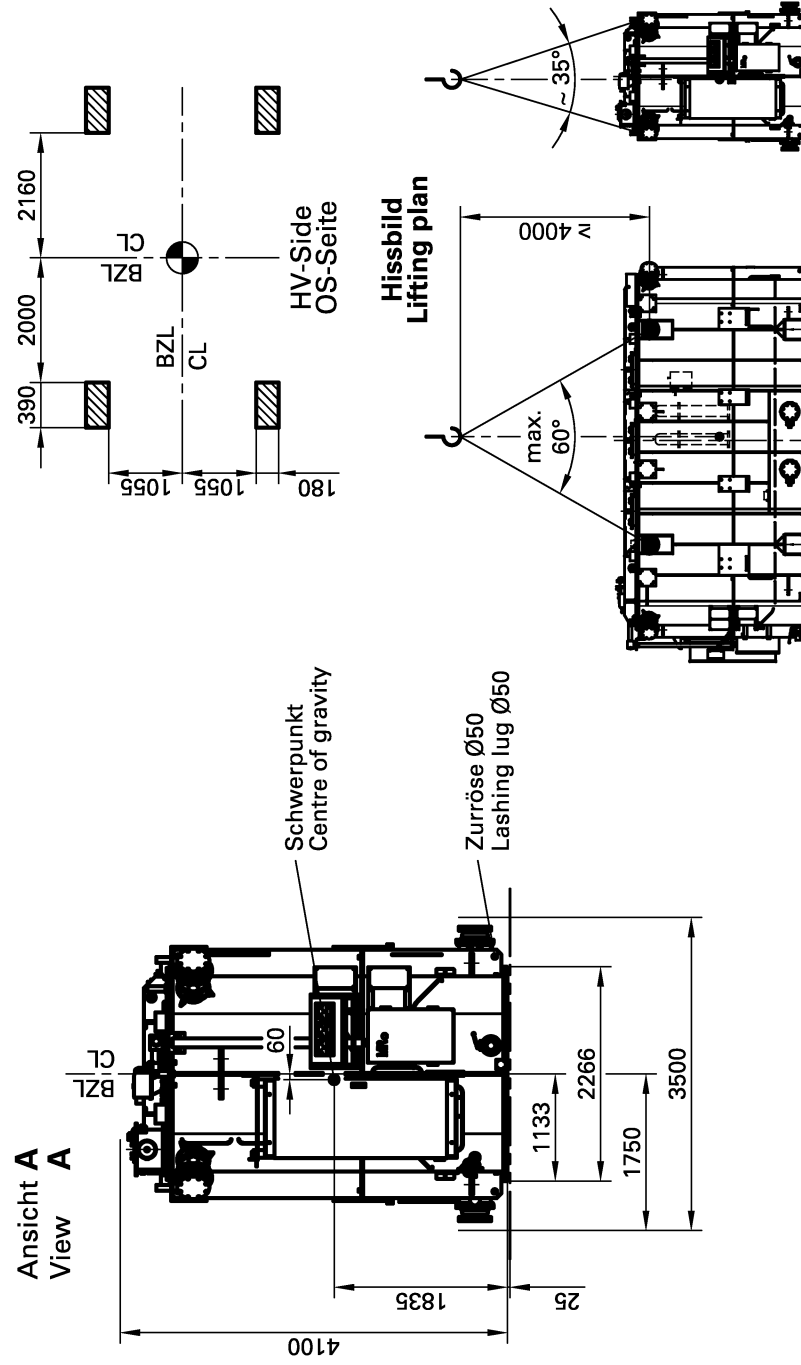
- Plate size TUN901256 - B2-297x420 - GF-UP - WS engraving black
Schildgröße TUN901256 - B2-297x420 - GF-UP - WS Schrift schwarz

Verladeplan Loading plan

Type **TLSN 8452**



Lage der Anhebestellen 445 mm über Unterkante Kesselboden Location of jacking pads 445 mm above tank bottom



Transportgewicht: 151,0 t
Abzulassende Ölmenge: 33,0 t

Shipping mass: 151,0 t
Oil to be drained: 33,0 t

Zum Transport sind abzubauen und getrennt mitzuliefern:

Dismantle for shipping and supply separately:

Radiatorenbatterie 1 und 2 je 6 750 kg
Radiatorenbatterie 3 und 4 je 5 110 kg
Halterung zur Stabilisierung der Radiatorenbatterien 2x je 107 kg
Ausdehnungsgefäß 2x je 178 kg
Dom für OS-Durchführungen 1A, 1B, 1C je 1 300 kg
Abdeckhaube für OS-N-Durchführung 1N je 143 kg
Erdungsverbindung für OS-N-Durchführung OS-N-Durchführung 1N je 62 kg
OS-Durchführungen 1A, 1B, 1C je 47 kg
US-Durchführungen 2a, 2b, 2c je 75 kg
div. Rohrleitungen, Armaturen, Schilder je 76 kg
505 kg

Radiatorbank 1 and 2 mass of part 6 750 kg
Radiatorbank 3 and 4 mass of part 5 110 kg
Buck for stabilization the radiatorbanks 2x mass of part 107 kg
Conservator 2x mass of part 178 kg
Turret for HV-bushings 1A, 1B, 1C mass of part 1 300 kg
Cover for bushing HV-N 1N mass of part 143 kg
Grounding cable for bushing HV-N 1N mass of part 62 kg
HV-N-bushing 1N mass of part 47 kg
LV-bushings 1A, 1B, 1C mass of part 75 kg
Pipes, fittings, plates mass of part 76 kg
505 kg

SIEMENS

D25 27 419-02
21.03.2012 We

Date	21.03.2012	Approved				
Distr. Group	EN 2	<i>Rösler</i>				
Prepared	Wenzel		Revision			
Checked	<i>Findeisen</i>					
SIEMENS	PD	Drawing designation	Loading plan		General tolerance	DIN ISO 2768-m
		Project	Lincs		Scale /	AutoCAD
WNR	51 7586	Dwg. No.	D25 27 419-01	Rev.	Sheet No.	01+ 3