

ReUse-MAE: Helium Recovery system

Overview

MAE-manufacturer

Machine type	HRS R/1+
Serial No.	220810
Year of manufacture	2023
Hours of operation	~250 h

MARPOSS GmbH

Technical data

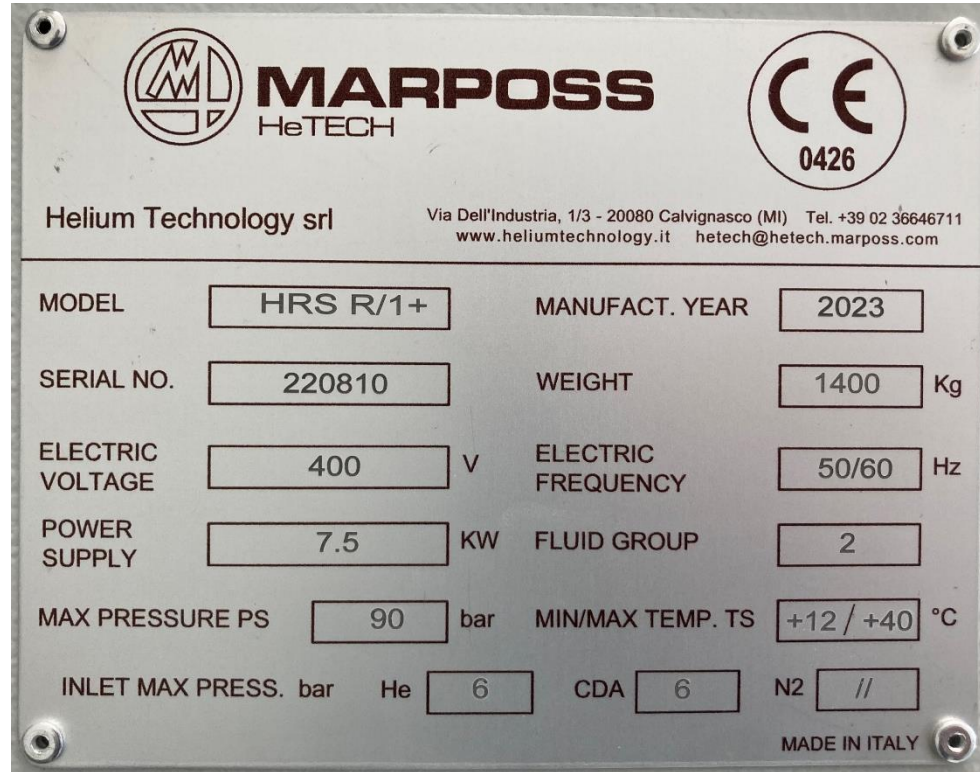
Efficiency	up to 90 %
Concentration	up to 90 % (*)
Capacity	100 NI/min
Pressure on delivery	adjustable up to 30 bar
Power supply	400 V, 50 Hz
Installed power	7.5 kW approx.
Inlet port (recovery)	G 3/8"
Outlet port (delivery)	G 1/4"
Noise level	≤ 80 dB
Overall dimensions	2150 x 1450 x 2000 mm
Weight	1400 kg
Control Unit	Siemens PLC with KTP 1200 12" Siemens HMI



Inv.Nr (asset No.) 205261418

ReUse-MAE: Helium Recovery system

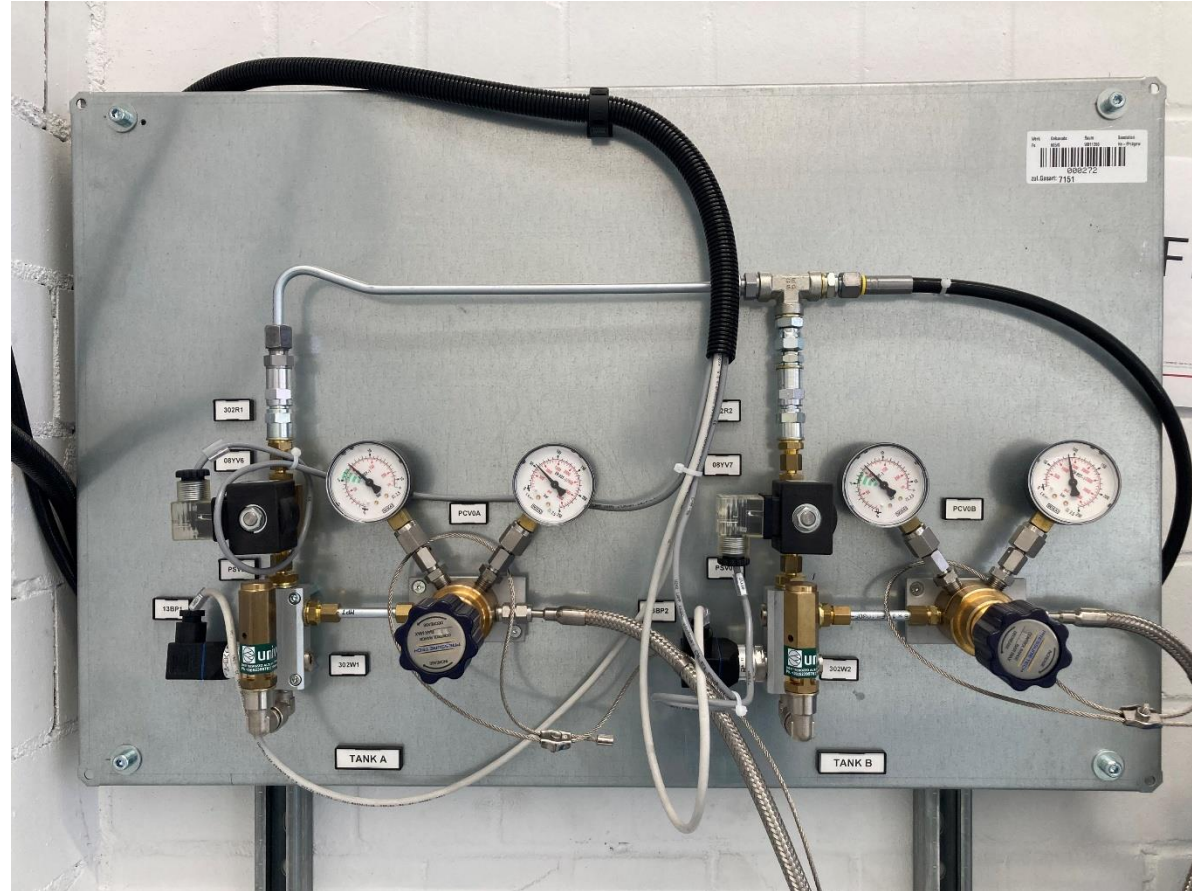
Details



Inv.Nr (asset No.) 205261418

ReUse-MAE: Helium Recovery system

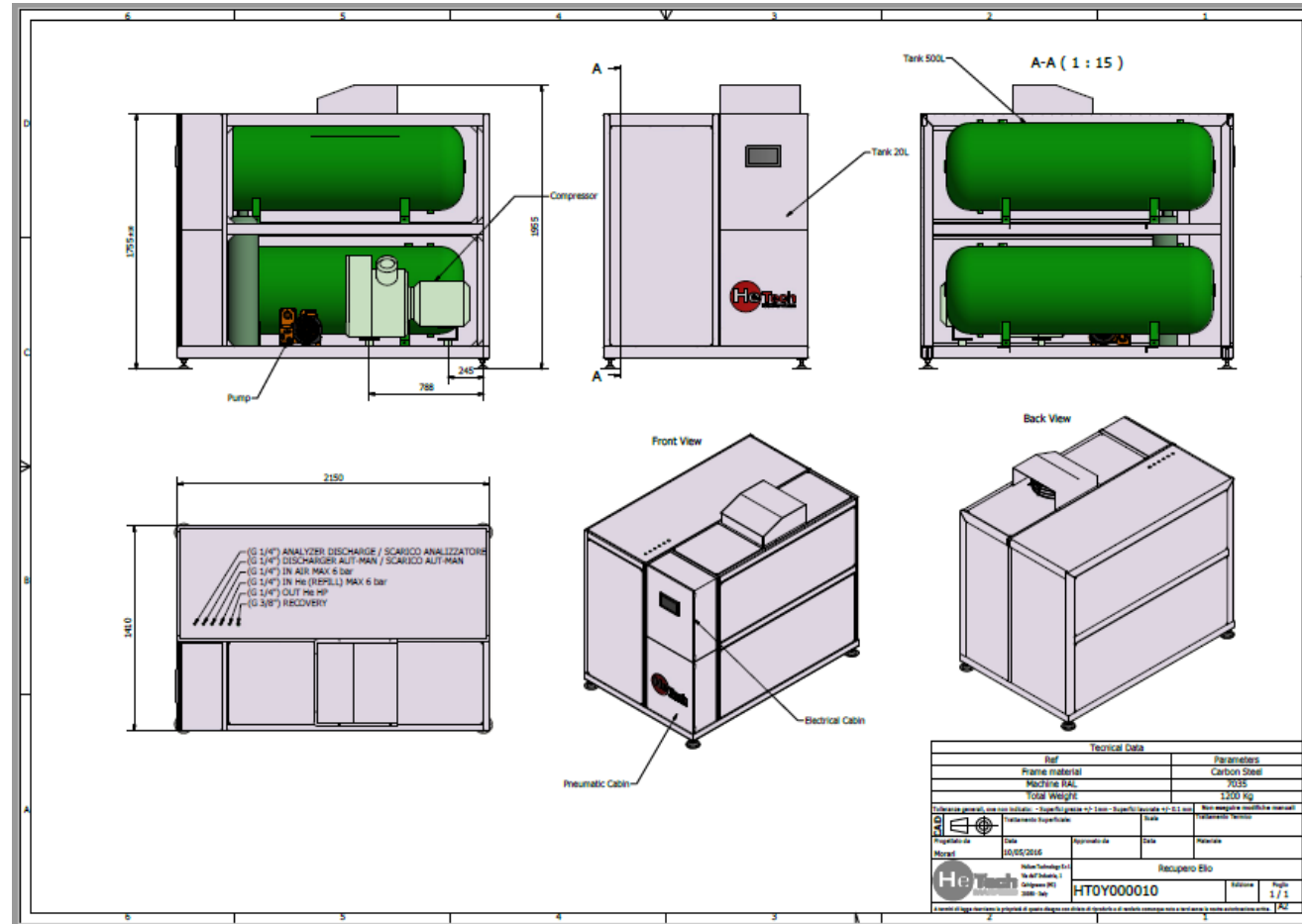
Details



Inv.Nr (asset No.)
205261418

ReUse-MAE: Helium Recovery system

Additional information



Inv.Nr (asset No.) 205261418