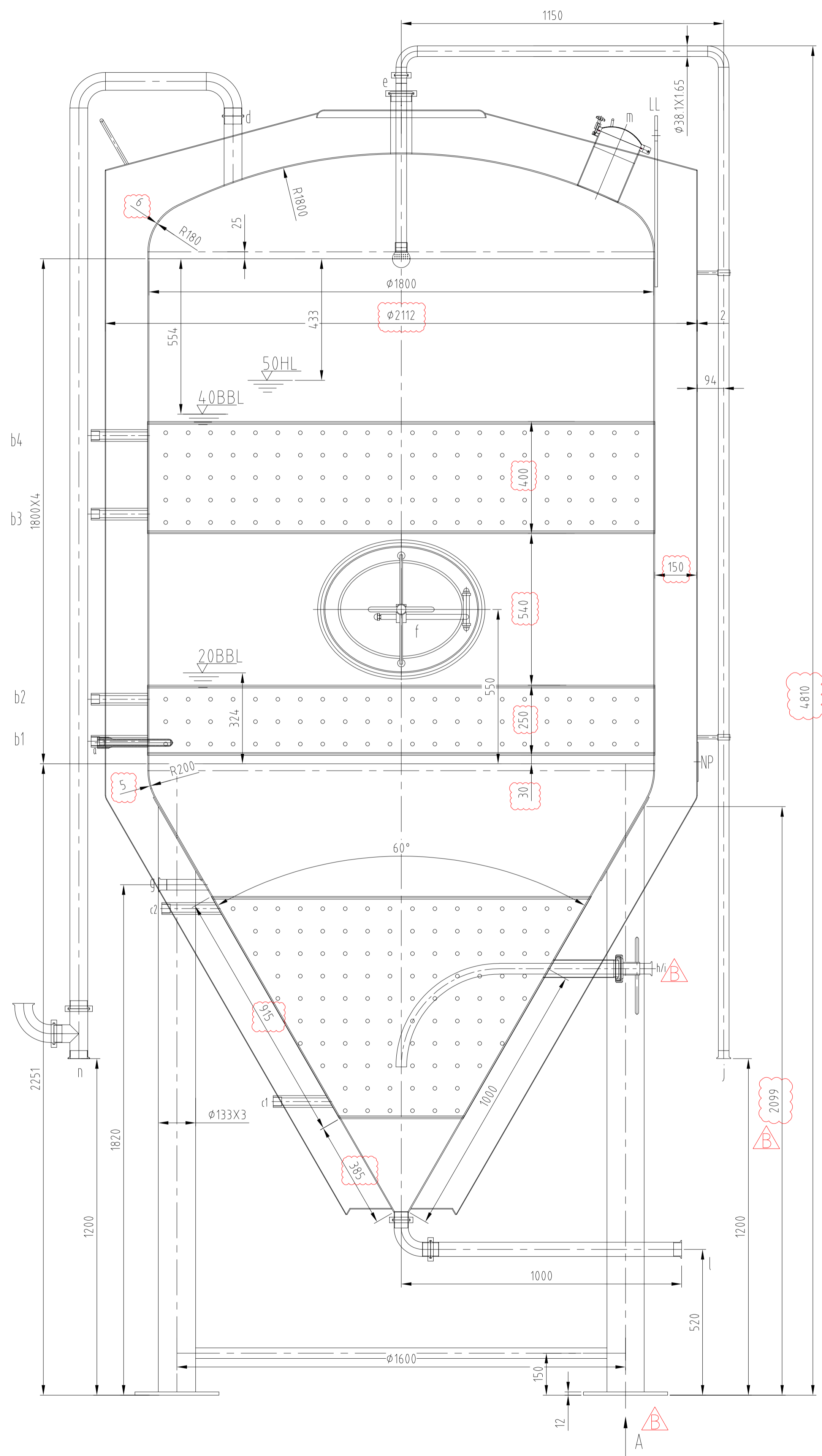
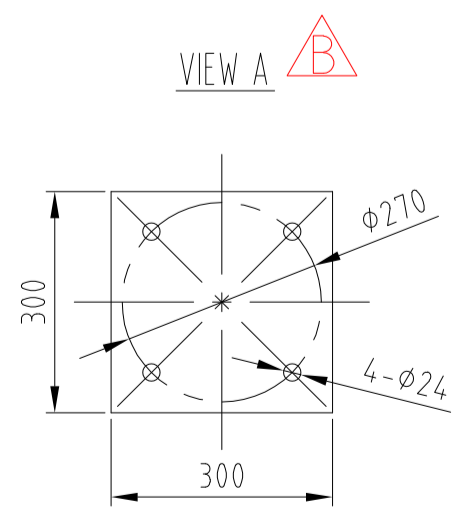
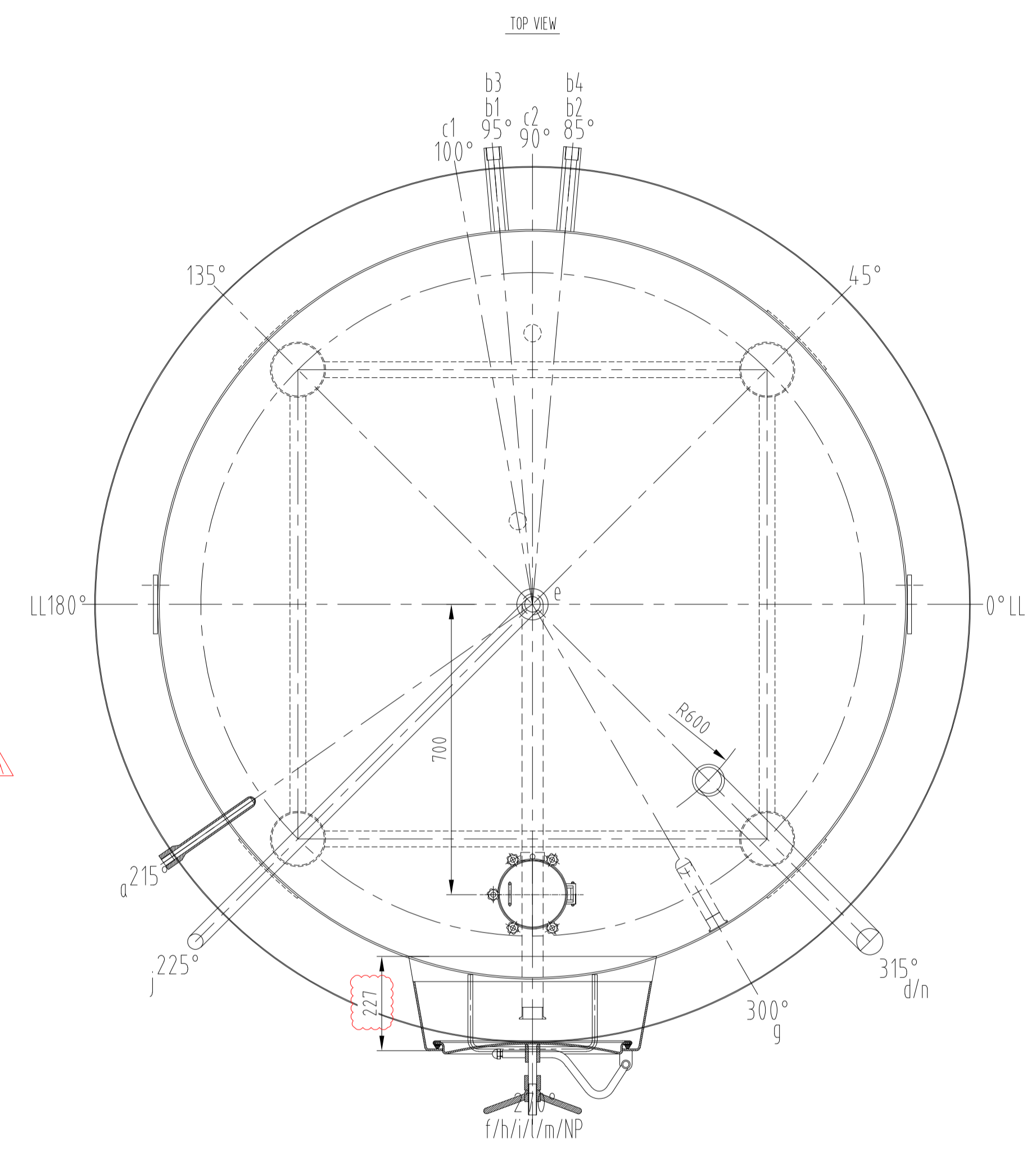


Serial NO



CE certification



MEDIUM	BEER	JACKET	GLYCOL WATER
DESIGN PRESSURE	3 BAR- STATIC HEAD	DESIGN VACUUM	25 BAR- STATIC HEAD
DESIGN TEMPERATURE	-10 / +100 °C	OPERATING TEMPERATURE	-10 / +100 °C
OPERATING PRESSURE	max 3 BAR- STATIC HEAD	OPERATING TEMPERATURE	2 BAR- STATIC HEAD
MDMT	-5/-90 °C	MDMT	-5/-90 °C
TEST PRESSURE (VERTICAL)	-10 °C	TEST PRESSURE (VERTICAL)	-10 °C
PRESSURE VESSEL CODE	ASME VIII.1 2019 EDITION	INSPECTION	ZHA QUALITY DEPT.
JOINT EFFICIENCY	TOP HEAD: V=0.85; SHELL: V=0.85; BOTTOM HEAD: V=0.85;	NDD TESTING CODE	NO
INSPECTION	INDOOR	REFERENCE WIND PRESSURE	NOT REQUIRED
NDD TESTING CODE	INDOOR	EARTHQUAKE LOAD	NOT REQUIRED
REFERENCE WIND PRESSURE	NOT REQUIRED	POST WELD HEAT TREATMENT	NOT REQUIRED
EARTHQUAKE LOAD	NOT REQUIRED	IMPACT TEST	NOT REQUIRED
POST WELD HEAT TREATMENT	NOT REQUIRED	NATURE OF SPECIAL SERVICE	NO
IMPACT TEST	NOT REQUIRED	NB REGISTRATION	NO
NATURE OF SPECIAL SERVICE	NO	CN REGISTRATION	NO
NB REGISTRATION	NO	PED INFORMATION	CATEGORY: B MIDDLE: H FLUID GROUP: 2 NOTIFIED BODY: 010036
CN REGISTRATION	NO	STAINLESS STEEL	S20201 304 TOP PRODUCT CONTACT MAIN PARTS
		MATERIAL CERTIFICATES	MATERIAL ACC. ASME SECTION II PART A HOT-ROLLED = 10; COLD-ROLLED = 2B1
		CORROSION ALLOWANCE	0

SURFACE TREATMENT	
FINISHING INSIDE	TOP HEAD(INCL. ACCESSORIES): WELDS GRINDED FLUSH AND ALL COMPLETELY GRINDED TO Ra<0.8 µm SHELL(INCL. ACCESSORIES): PLATE = 2B-finish BOTTOM (INCL. ACCESSORIES): WELDS GRINDED FLUSH TO Ra<0.8 µm VESSEL: WELDS AND KNUCKLE GRINDED FLUSH TO Ra<0.8 µm
OUTSIDE SURFACE OF STAINLESS STEEL	FINISHING EXPOSED OUTSIDE: POLISHED TO Ra<1.0 µm PARTS COVERED BY INSULATION: WELDS GRINDED FLUSH AND POLISHED TO Ra<1.0 µm; FILLET WELDS BRUSHED REGULARLY
MILD STEEL SURFACE	WELDS: BRUSHED

INSULATION	
THICKNESS	150mm (measured from tank wall) PU-foam (free of CFC) 40 45kg/m³
CLADDING TOP HEAD	TYPE: Flat / T: 3.0 mm / MAT.: 304 / FINISH: 10µm OIL GROUND NO.4
CLADDING SHELL	TYPE: Flat / T: 2.0 mm / MAT.: 304 / FINISH: 10µm OIL GROUND NO.4
CLADDING BOTTOM HEAD	TYPE: Flat / T: 2.0 mm / MAT.: 304 / FINISH: 10µm OIL GROUND NO.4
CAPACITY VESSEL GROSS	674L
NETT	469L
CAPACITY COOLING COIL GROSS	275L
NETT	275L
WEIGHT EMPTY NOT INSULATED	150 KG
EMPTY INSULATED	150 KG
FILLED WITH WATER	-
IN PROCESS	7000 KG

REMARK:

- UNINDICATED BOLT HOLES STRADDLE TO TANK CENTER LINES.
- UNINDICATED TOLERANCES, REFERRED TO HG172054-2011 PART 9.
- FOR TRUE NOZZLE ORIENTATION SEE TOP VIEW ONLY.
- FOR TRUE WELDING MATERIAL AND WELDS DETAILS REFER TO WPS ONLY.
- ALL MAIN WELDS OF TANK DO NEED DT (DYE PENETRANT TEST)

(NOZZLE DATA)				
Mark	DN	PN	Description	Remark
a	NPT1/2"	-	THERMOMETER TRANSMITTER	INNER SCREW
b1	NPT1"	-	COOLING INLET	INNER SCREW
b2	NPT1"	-	COOLING OUTLET	INNER SCREW
b3	NPT1"	-	COOLING INLET	INNER SCREW
b4	NPT1"	-	COOLING OUTLET	INNER SCREW
c1	NPT1"	-	COOLING INLET	INNER SCREW
c2	NPT1"	-	COOLING OUTLET	INNER SCREW
d	2.5"	-	PIRV	Ø63.5X1.65 CLAMP
e	3"	-	CP	Ø76.2X1.65 CLAMP
f	450X350	-	MANHOLE	580X480X5 CLAMP
g	15"	-	SAMPLE PIPE	Ø38.1X1.65 CLAMP
h	15"	-	RACKING ARM	Ø38.1X1.65 CLAMP
i	3"	-	RACKING PORT	Ø76.2X1.65 UNION
j	15"	-	CP	Ø38.1X1.65 CLAMP
l	2"	-	BEER INLET	Ø50.8X1.65 CLAMP
m	150	-	HOPS INLET	Ø159X3
n	2.5"	-	BLOW OFF ARM	Ø63.5X1.65 CLAMP
NP	/	-	NAME PLATE	1X
LL	/	-	LIFTING LUG	2X



Rev.	Description	SIC./DATE	TARE WEIGHT(Kg)	PROJECT NAME
DES.	STAND		MAT.	DME project17
CHK.	CRT		REV.	C
REV.	SIG.		SCALE	EQUIPMENT NAME
CRA.	DATE		SHEET NO. OF	DWG.NO. ZHA21027.01-00