

# Machine Overview: Schlatter MG900 MG12 Mesh Welding Machine

---

## General Description

The Schlatter MG900 is a powerful and refurbished resistance welding machine, specifically designed for the production of wire mesh panels. With a width capacity of up to **1250 mm** and a length of **3000 mm**, it handles wire diameters of up to **10 mm**. This machine has undergone extensive modernization to deliver maximum efficiency and flexibility in production.

---

## Technical Specifications

### 1. Main Components

- **LV - Longitudinal Wire Feeder**
  - Upgraded with a high-precision servo axis
  - Hopper magazines for longitudinal wires up to **3000 mm**
- **MG12.4 - Mesh Welding Unit**
  - Equipped with **6 transformers**, 70kVA, AC
  - Up to 12 Schlatter welding presses with a capacity of **5 kN**
- **QFD34 - Cross Wire Feeder**
  - Allows for double cross wire insertion for **two different cross wire diameters** / length, *\*Note: The second level is not yet installed in the photos*
- **MVL - Mesh Extraction Unit**
  - Controlled by a new **MS2N Servo Motor** from Bosch Rexroth CrtIX
  - Equipped with four Schlatter mesh grippers (expandable upon request)
- **MS - Mesh Stacker**
  - Automatically stacks mesh panels with a travel path of up to **3000 mm**
- **Control and Power Cabinet**
  - **Siemens S7 TIA** Control System
  - **Rexroth CrtIX Components** for high-dynamic motion control

### 2. Optional Components

- **LFE - Longitudinal Wire Inserter** (not included, available upon request).
-

## Key Features and Benefits

- **Comprehensive Refurbishment:** Fully modernized to meet current production standards.
- **Enhanced Flexibility:** Expansion capabilities up to the final stage.
- **High Precision:** Servo motors and advanced control technologies ensure precise operation.
- **Increased Efficiency:** Automated processes with the mesh stacker and servo-driven longitudinal wire feeding.
- **Future-Proof Technology:** Integration of the latest control and motion systems.

## Applications

- Manufacturing of reinforcement mesh.
- Production of industrial wire mesh panels.
- Flexible for various wire diameters and configurations.

- **Mesh Width** (Transverse Wire Length) max. 1250 mm  
min. 200 mm
- **Mesh Length** (Manual Loading) max. 3200 mm  
min. 300 mm
- **Distance Between Outer Longitudinal Wires** max. 1200 mm
- **Longitudinal Wire Spacing** 20 - 150 mm
- **Cross Wire Spacing** min. 12.5 mm
- **Longitudinal Wire Diameter** 2.0 - 10.0 mm
- **Transverse Wire Diameter** 2.0 - 8.0 mm
- **Maximum Number of Longitudinal Wires** max. 24
- Flat bar
- Upright 3 x 25 mm
- Quantity 6

- Potential wire diameters with potential set-up:

Cross and longitudinal wire diameter	max. No. of longitudinal wires	min. cross and longitudinal wire distance
2.0 + 2.0 mm <sup>1.)</sup>	18	20 x 12.5 mm
3.0 + 3.0 mm	16	35 x 35 mm
4.0 + 4.0 mm <sup>1.)</sup>	16	50 x 50 mm
6.0 + 6.0 mm	12	75 x 75 mm
8.0 + 8.0 mm	12	100 x 100 mm

Images and Visuals

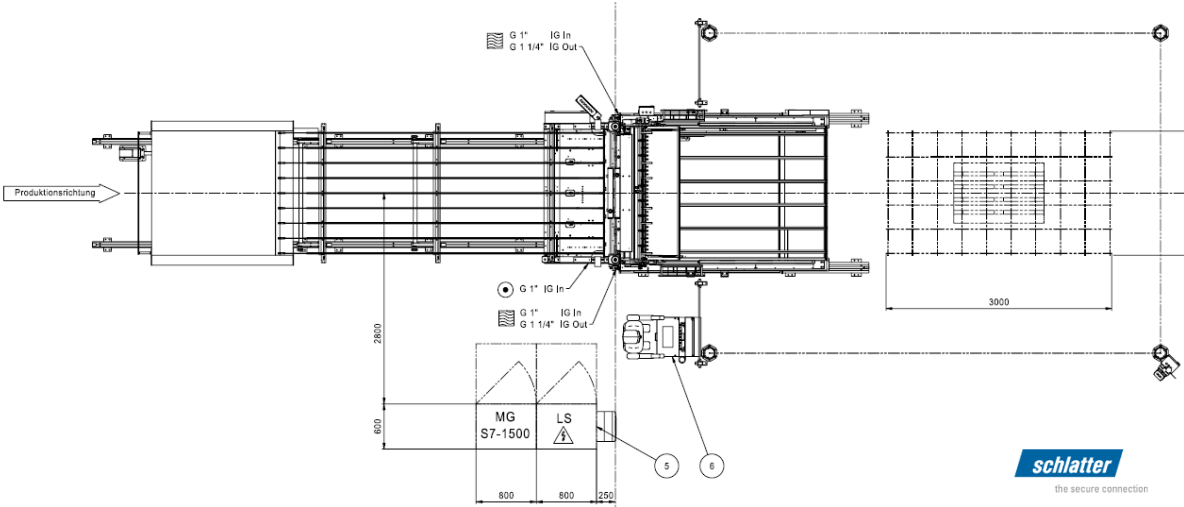


Abbildung 1: Machine Layout



Abbildung 2: Longitudinal Wire Feeder LV with Servo Positioning



*Abbildung 3: MG12 Mesh Welding Unit*



*Abbildung 4: MG12 with Longitudinal Wire Magazine*



*Abbildung 5: MG12 with cross wire supervision*



*Abbildung 6: Double Cross Wire Feeder QFD34*



Abbildung 7: Double Cross Wire Feeder QFD34 (Layer 2. not installed in picture)



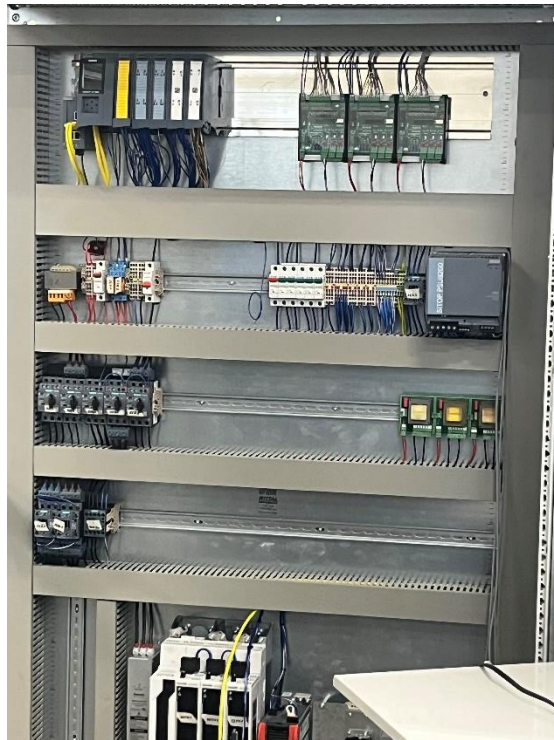
Abbildung 8: MVL Mattenauszug mit drei Mattengreifern



*Abbildung 9: MVL Mesh extraction unit*



*Abbildung 10: MS Mesh Stacker*



*Abbildung 11: Control cabinet*

## **Contact Information**

For questions, videos, viewings, or technical details, please contact us.

We look forward to presenting the Schlatter MG900 in operation and finding the perfect solution for your production needs.