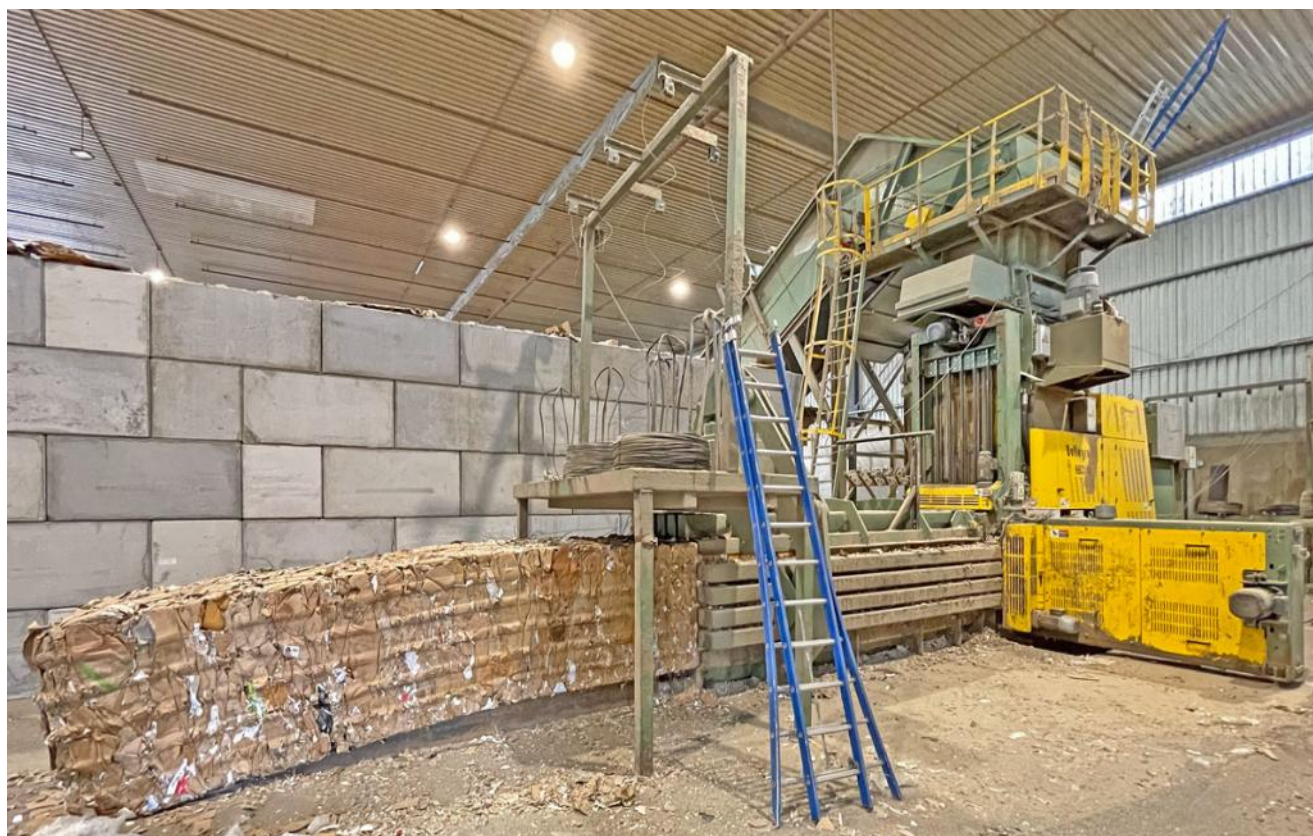


Baler Bollegraaf, type HBC 140 K, 140 t pressing force, yoc 2012, only 18,593 operating hours, with 10-fold cross tying system and conveyors



The press is currently in operation and is to be replaced by a new machine in the second calendarweek of 2025. Inspections are possible after agreement.

Technical data baler:

Manufacturer Bollegraaf

Typ HBC 140 K

Year of construction 2012

Working hours 18.593 hours, stand September 2024

Press power main press 140 tons

Press power of pre-press 70 tons

Feed channel 1,600 x 1,100 mm

Capacity per cycle time 4,34 m³

Theoretic cycle time 16 sec.

Bale size 1,100 x 1,100 mm

Driving motor 2 x 75 kW

Connected load 248 kW

Full load current 470 A

Tying system 5-fold vertical, fully automated

Throughput rate at a

bulk weight of 30 kg/cbm approx. 30 tons/h

bulk weight of 50 kg/cbm approx. 46 tons/h

bulk weight of 100 kg/cbm approx. 82 tons/h

Bale weight 800 up to 1300 kg, depends on material and bale length

SPS controller Telemecanique TSX Micro

Operating panel Schneider MAGELIS Touch

Baler dimensions built up with hopper 13,200 x 2,750 x 7,344 mm (l x w x h)

Transport dimensions only baler 13.200 x 2.750 x 3.450 mm (l x w x h)

Machine weight baler approx. 47 tons

Special equipment:

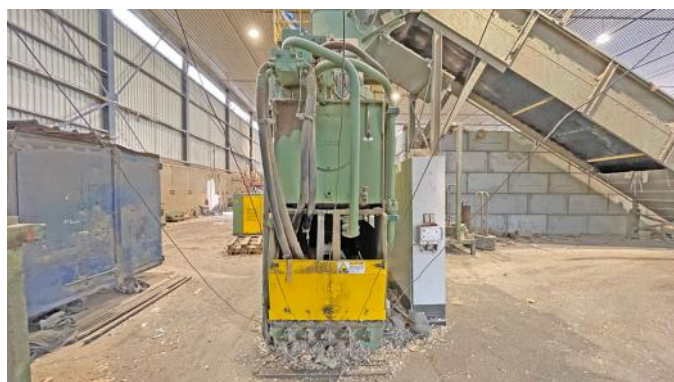
Baler Bollegraaf, type HBC 140 K, 140 t pressing force, yoc 2012, only 18,593 operating hours, with 10-fold cross tying system and conveyors

2-flap pre-compressor for large cardboard boxes and octatainers
Wirbulator for magazines and books

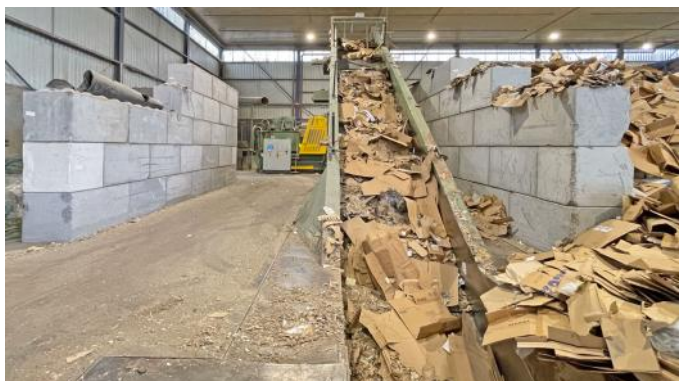
Comments:

The press is currently in operation and is to be replaced by a new machine in the second calendarweek of 2025. Inspections are possible after agreement. We will not assume liability for the given technical data and possible errors.

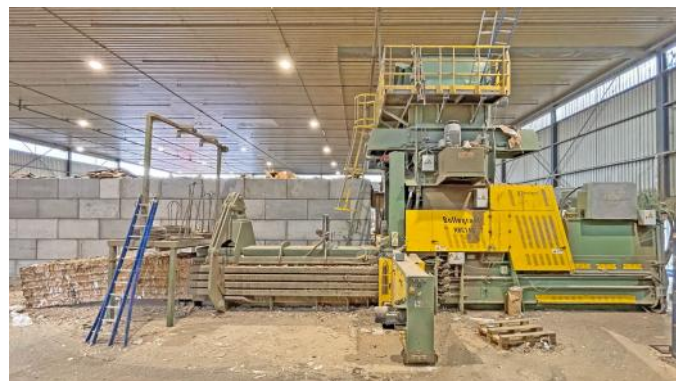
Baler Bollegraaf, type HBC 140 K, 140 t pressing force, yoc 2012, only 18,593 operating hours, with 10-fold cross tying system and conveyors



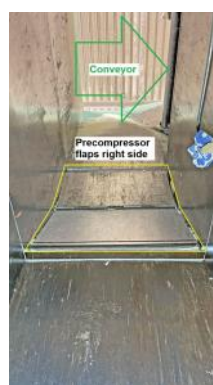
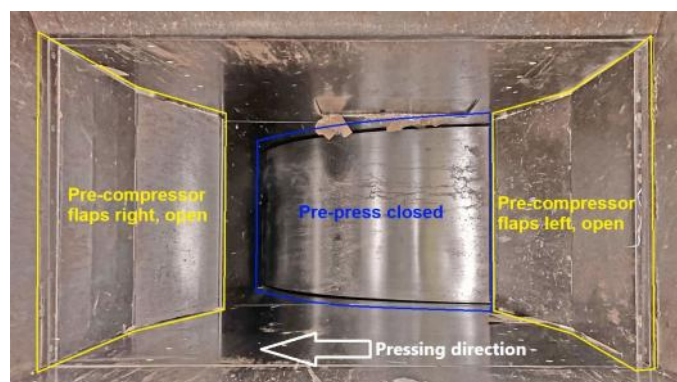
Baler Bollegraaf, type HBC 140 K, 140 t pressing force, yoc 2012, only 18,593 operating hours, with 10-fold cross tying system and conveyors



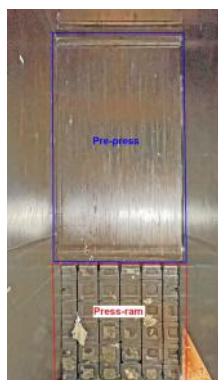
Baler Bollegraaf, type HBC 140 K, 140 t pressing force, yoc 2012, only 18,593 operating hours, with 10-fold cross tying system and conveyors



Baler Bollegraaf, type HBC 140 K, 140 t pressing force, yoc 2012, only 18,593 operating hours, with 10-fold cross tying system and conveyors



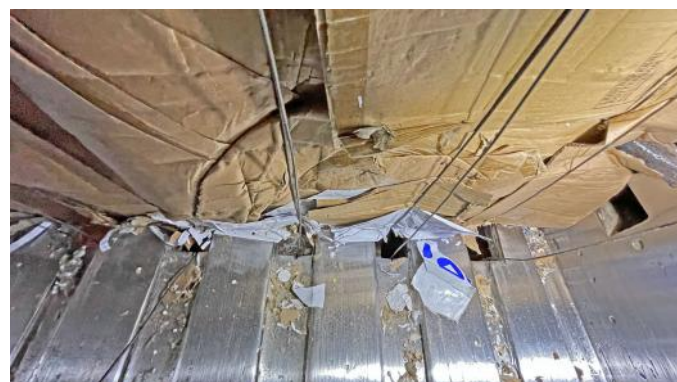
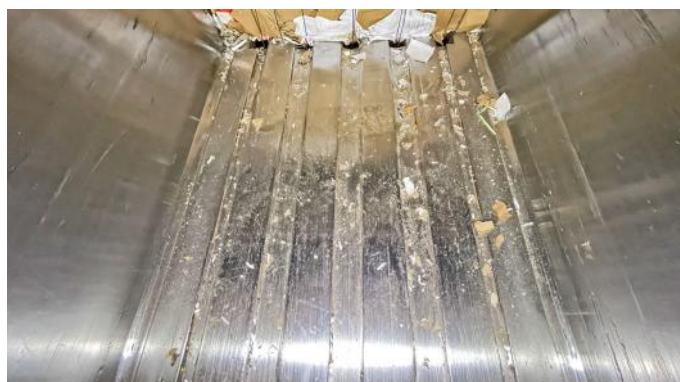
Baler Bollegraaf, type HBC 140 K, 140 t pressing force, yoc 2012, only 18,593 operating hours, with 10-fold cross tying system and conveyors



Baler Bollegraaf, type HBC 140 K, 140 t pressing force, yoc 2012, only 18,593 operating hours, with 10-fold cross tying system and conveyors



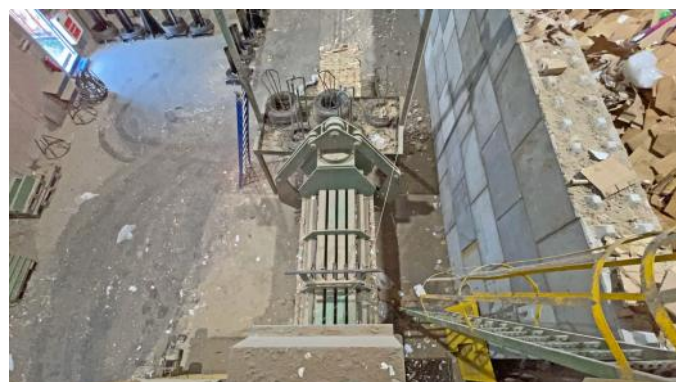
Baler Bollegraaf, type HBC 140 K, 140 t pressing force, yoc 2012, only 18,593 operating hours, with 10-fold cross tying system and conveyors



Baler Bollegraaf, type HBC 140 K, 140 t pressing force, yoc 2012, only 18,593 operating hours, with 10-fold cross tying system and conveyors



Baler Bollegraaf, type HBC 140 K, 140 t pressing force, yoc 2012, only 18,593 operating hours, with 10-fold cross tying system and conveyors



Baler Bollegraaf, type HBC 140 K, 140 t pressing force, yoc 2012, only 18,593 operating hours, with 10-fold cross tying system and conveyors



Baler Bollegraaf, type HBC 140 K, 140 t pressing force, yoc 2012, only 18,593 operating hours, with 10-fold cross tying system and conveyors

