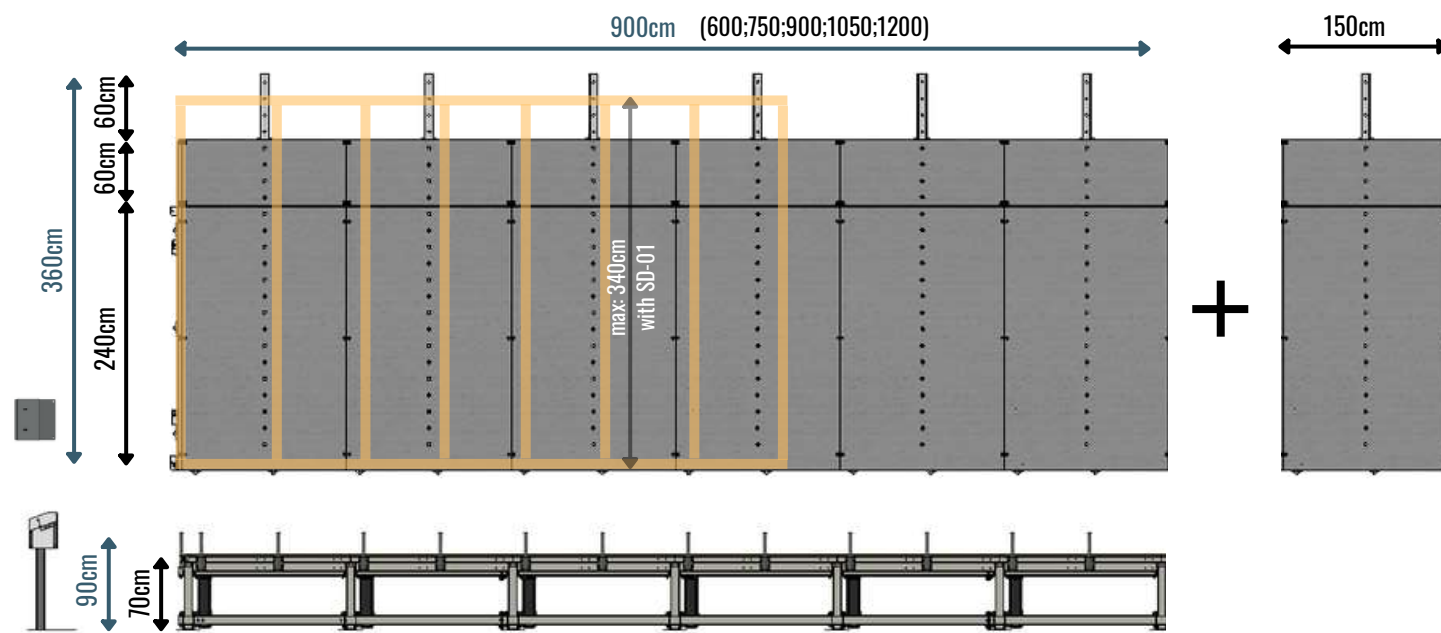
A 3D perspective rendering of a large industrial machine used for producing wooden house components. The machine features a long, flat worktable with a grid of holes. A large wooden panel is being processed on the table. A metal frame structure is visible in the background. The machine is equipped with various mechanical components, including rollers and a control panel with a yellow and black striped safety bar. The overall design is modern and functional.

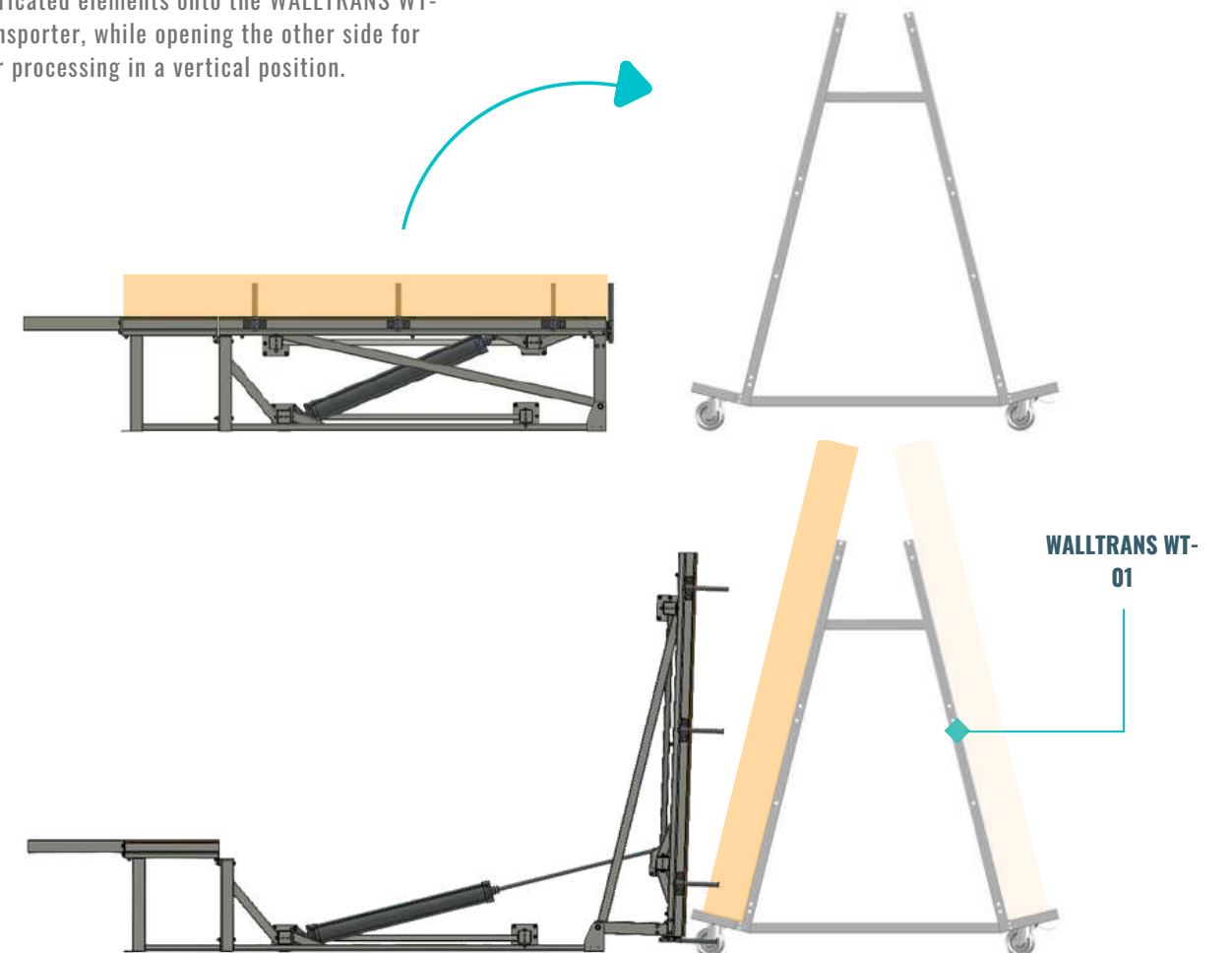
PRODUCTION OF MACHINES AND DEVICES
TECHNOLOGY FOR PRODUCERS OF
WOODEN HOUSES

ER- 01P

SINGLE-WING ROTARY TABLE with pneumatic drive

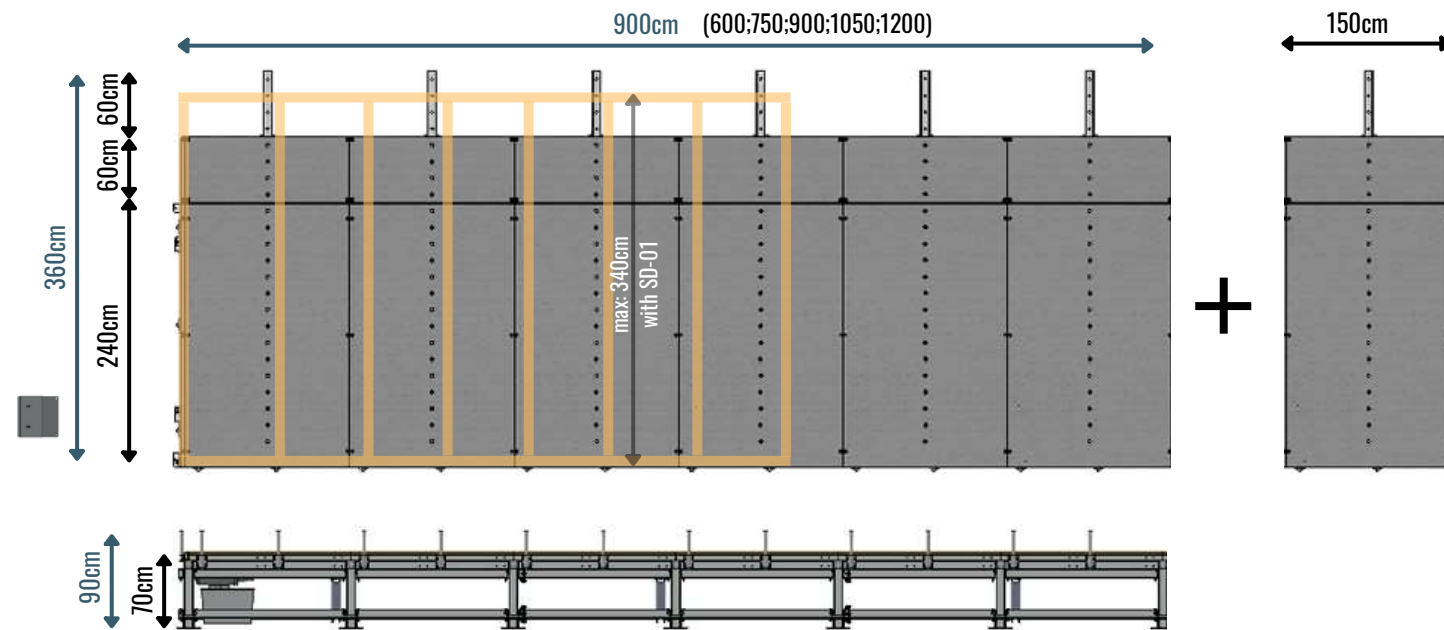
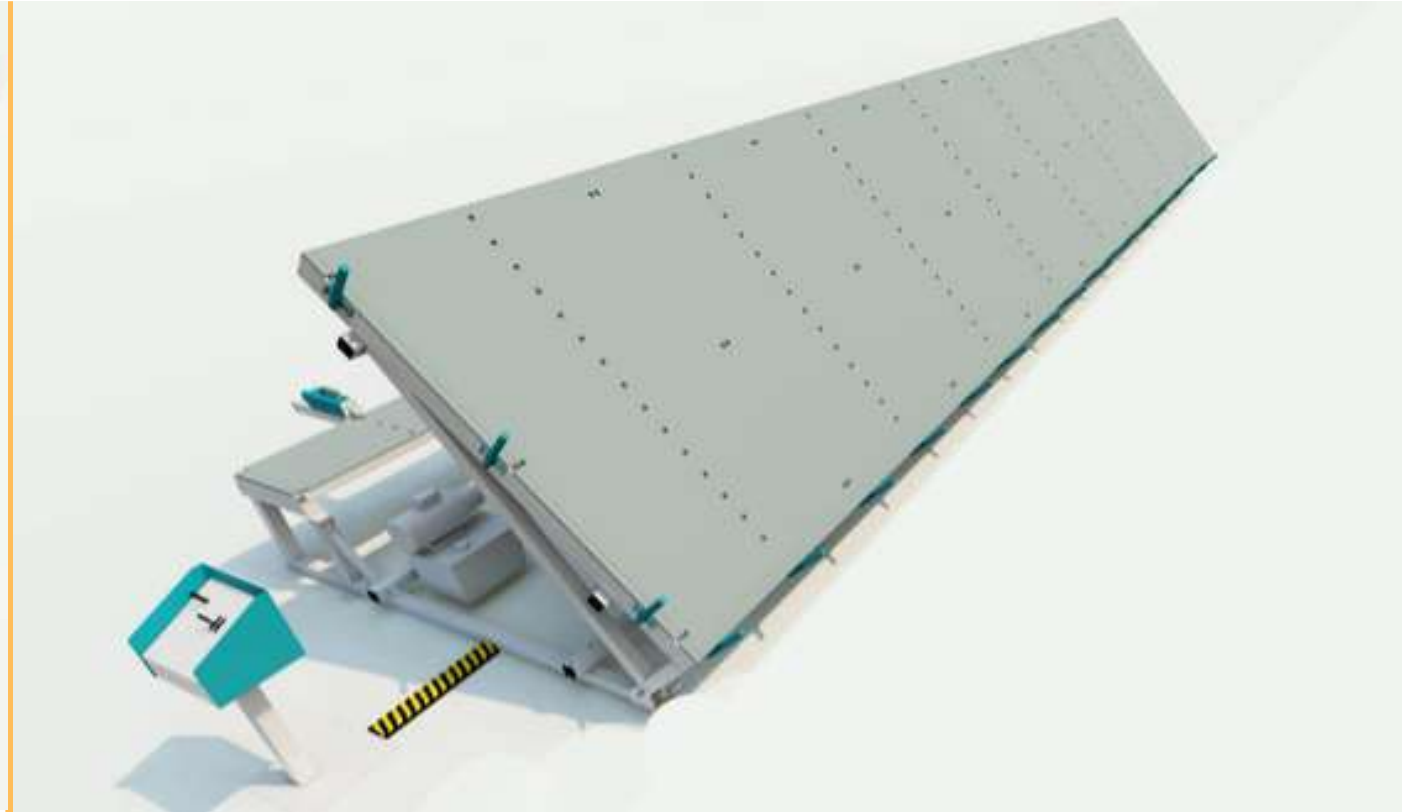


The single-wing table ER-01 enables placing prefabricated elements onto the WALLTRANS WT-01 transporter, while opening the other side for further processing in a vertical position.

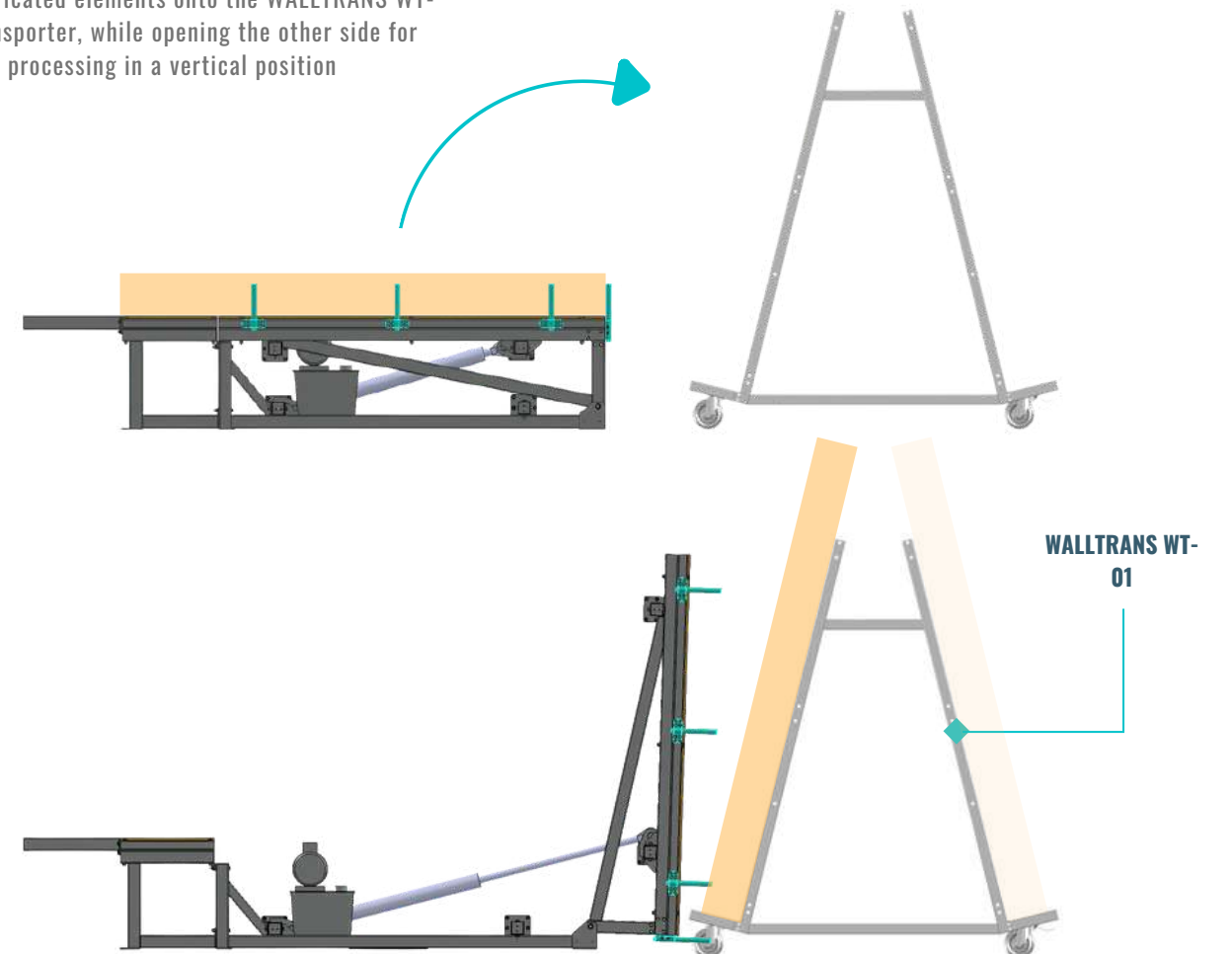


- Pneumatic Drive - Operating Pressure: 7-9 BAR
- Permissible Load: 60kg/m² (e.g., for a 9m table - 1620kg)
- Powder-coated Steel Construction
- Plywood Top Covered with HPL - Impact and Scratch Resistant
- Mounting Holes for Clamping Pistons at 150mm Intervals
- Removable Locking Pins
- Modular Design with Option to Expand with Additional Segments
- Possibility of Adding Transport Rollers
- Option to Expand with Additional Wing - Achieving a Full Butterfly Table ER-03

ER- 01H SINGLE-WING ROTARY TABLE with hydraulic drive



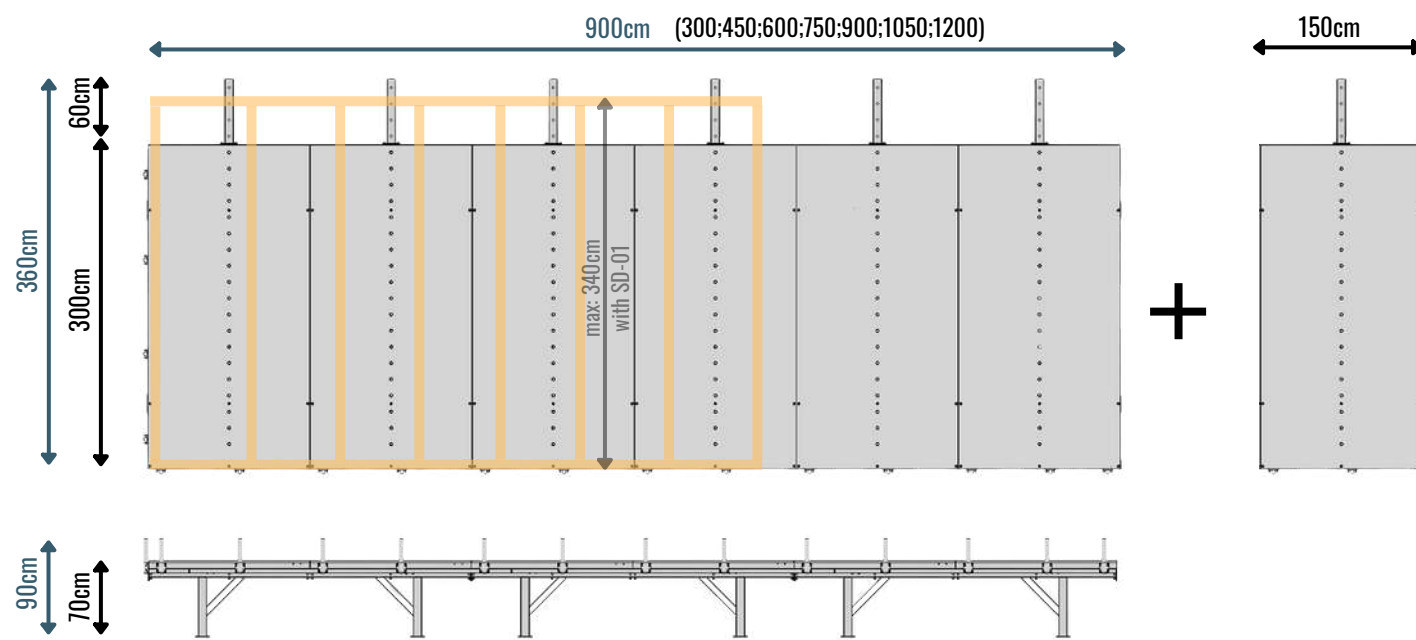
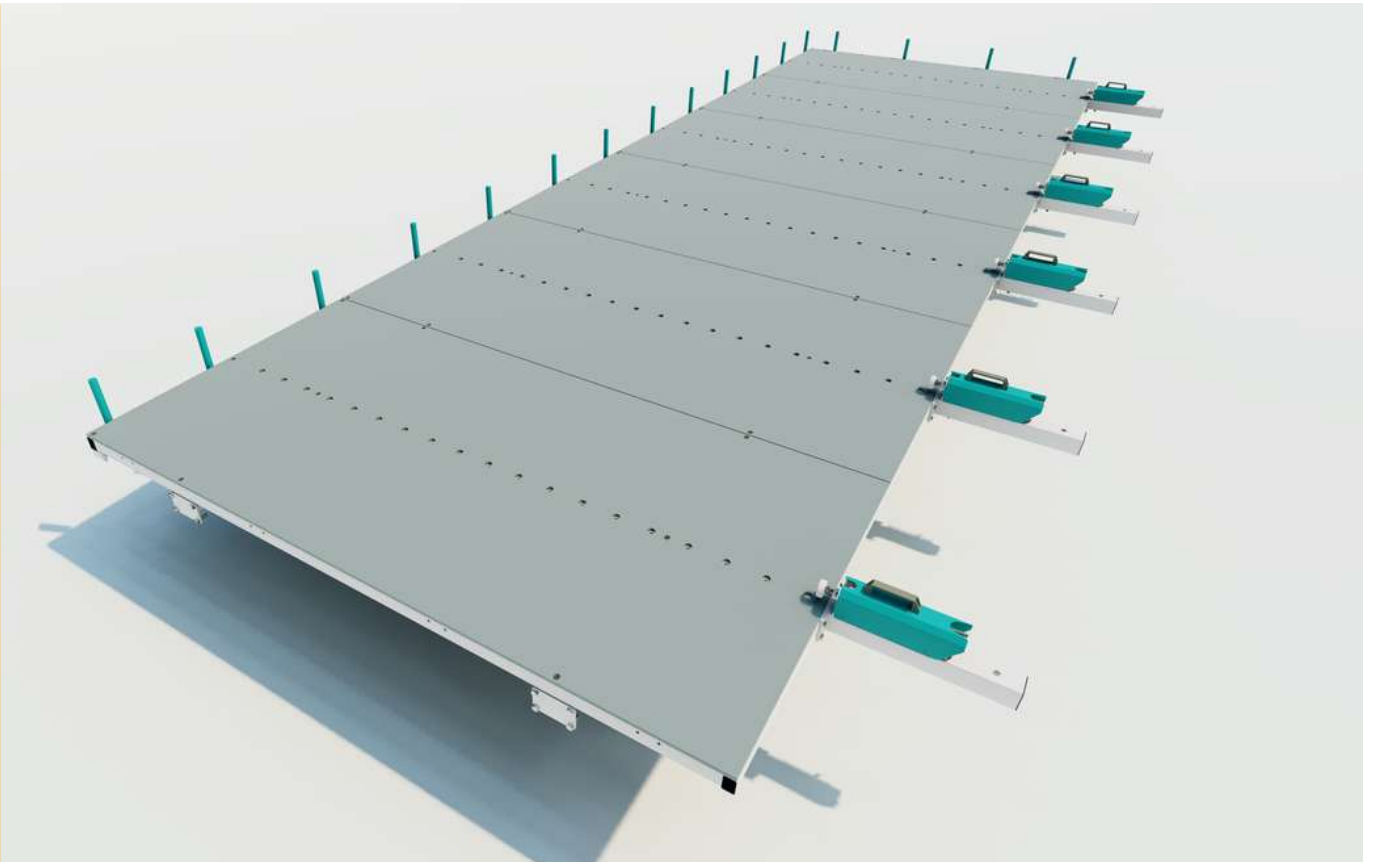
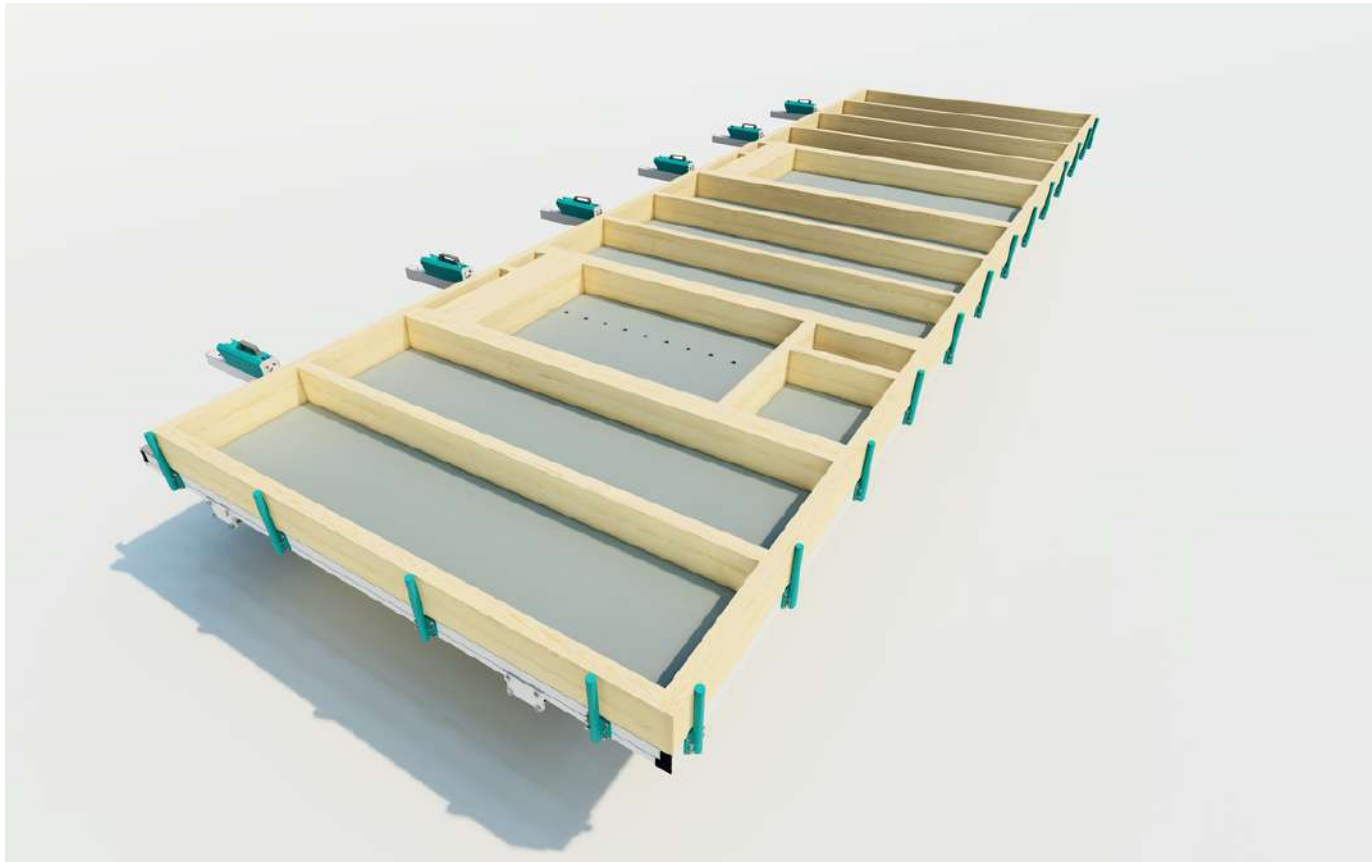
The single-wing table ER-01 allows placing prefabricated elements onto the WALLTRANS WT-01 transporter, while opening the other side for further processing in a vertical position



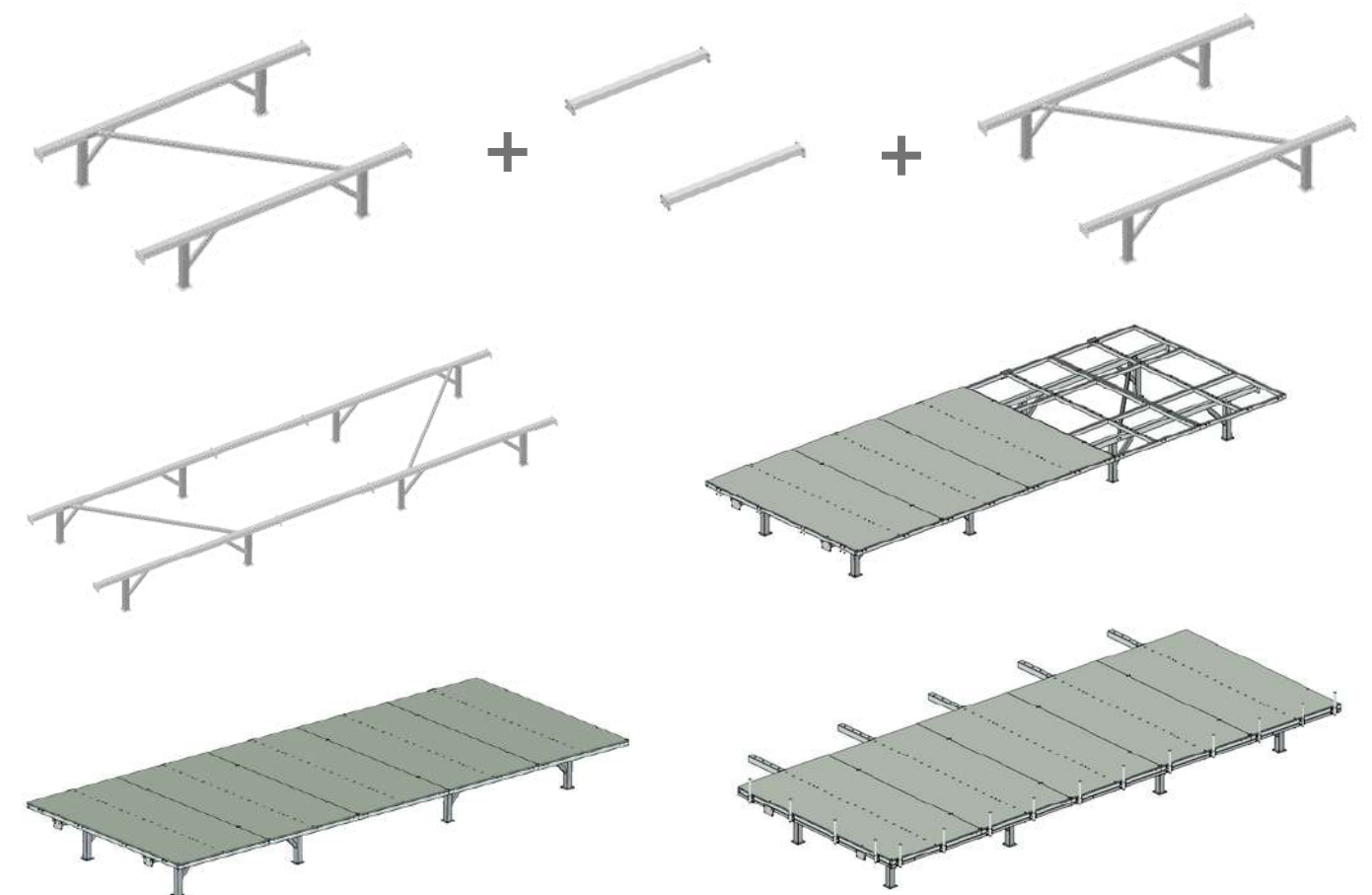
- Hydraulic drive - operating pressure 120-140 BAR
- Permissible load: 100kg/m² (e.g., for a 9m table - 2700kg)
- Powder-coated steel construction
- Plywood top covered with HPL - impact and scratch-resistant
- Mounting holes for clamping pistons at 150mm intervals
- Removable locking pins
- Modular design with the option to expand with additional segments
- Possibility of using transport rollers
- Option to expand with an additional wing - achieving a full butterfly table ER-03

ER-02

FIXED ASSEMBLY TABLE

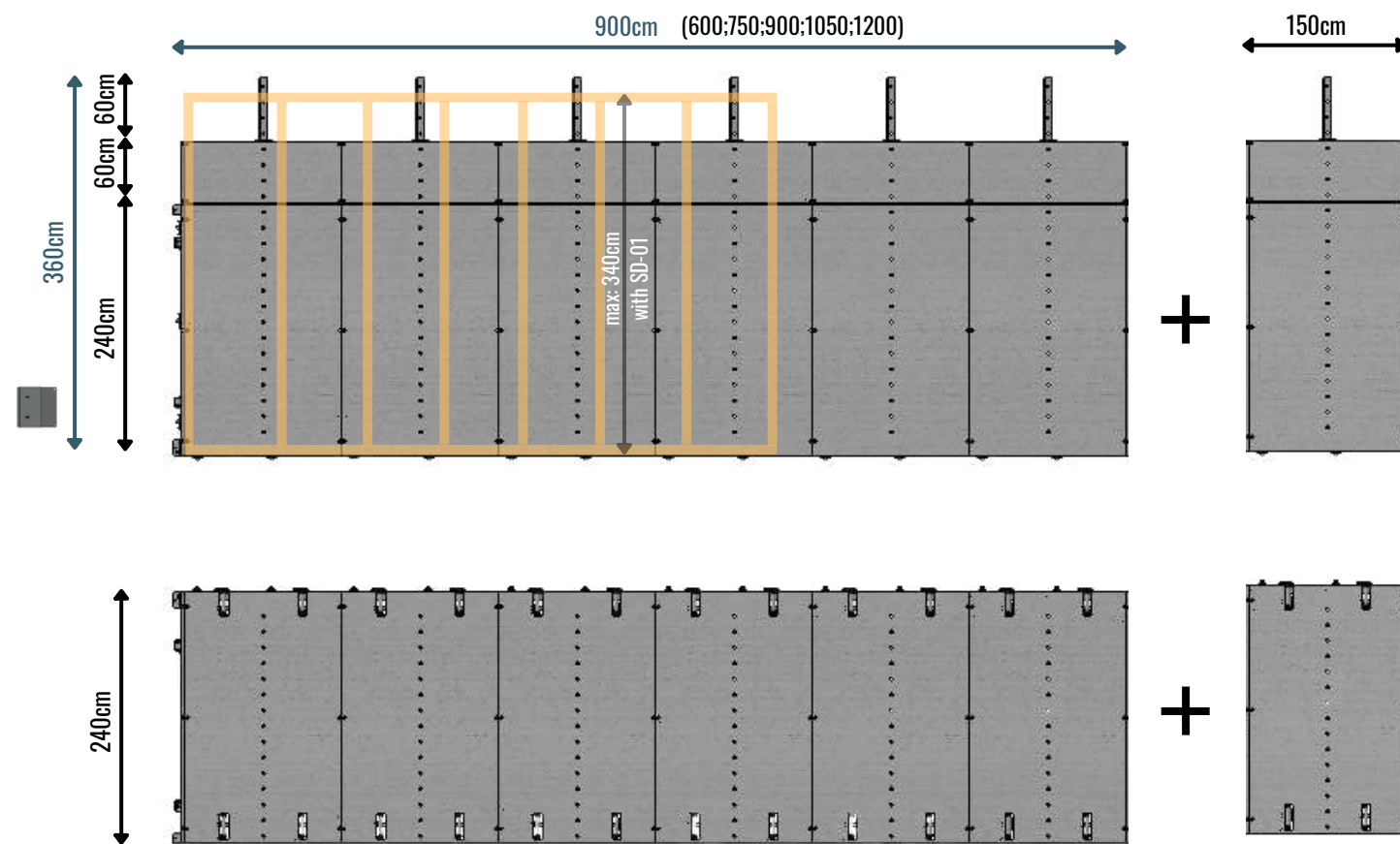
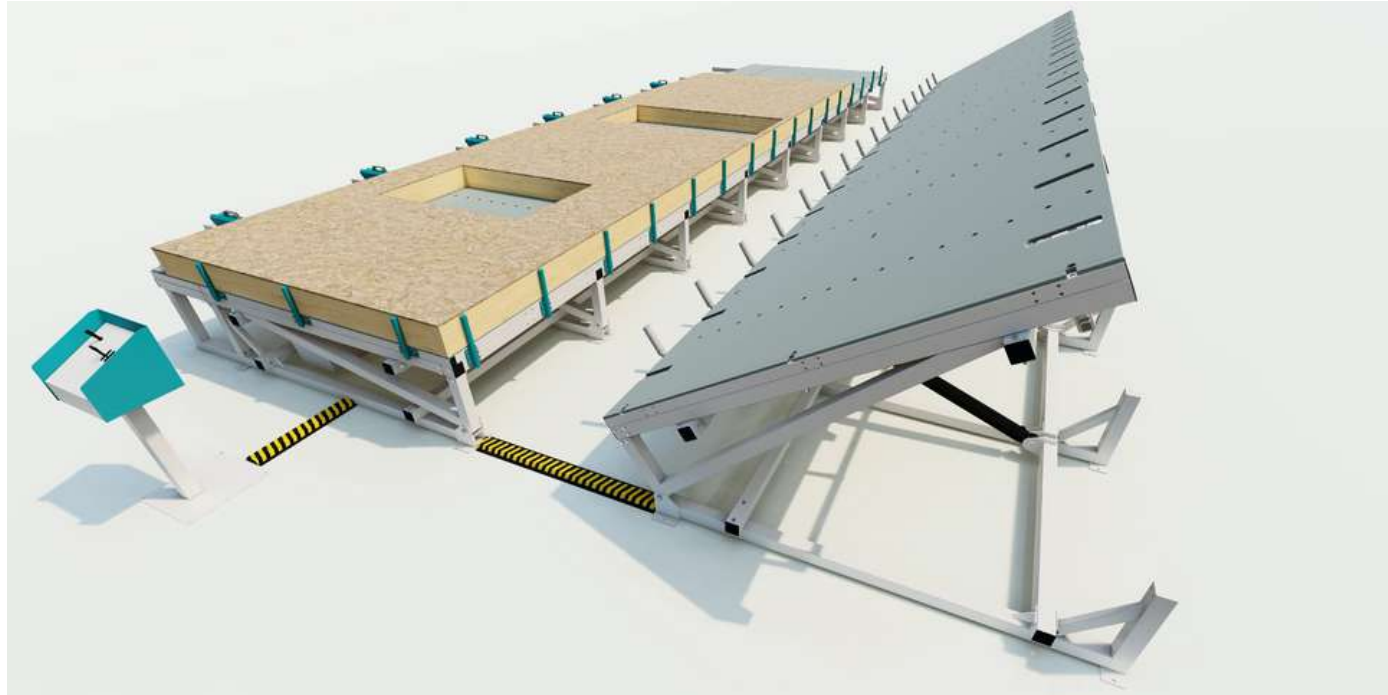


The fixed assembly table ER-02 is designed for simple and fast assembly. Thanks to its mobility, the entire table, even up to a length of 12m, can be transported on a single pallet. With the growth of your company, you can purchase additional segments and expand the working area

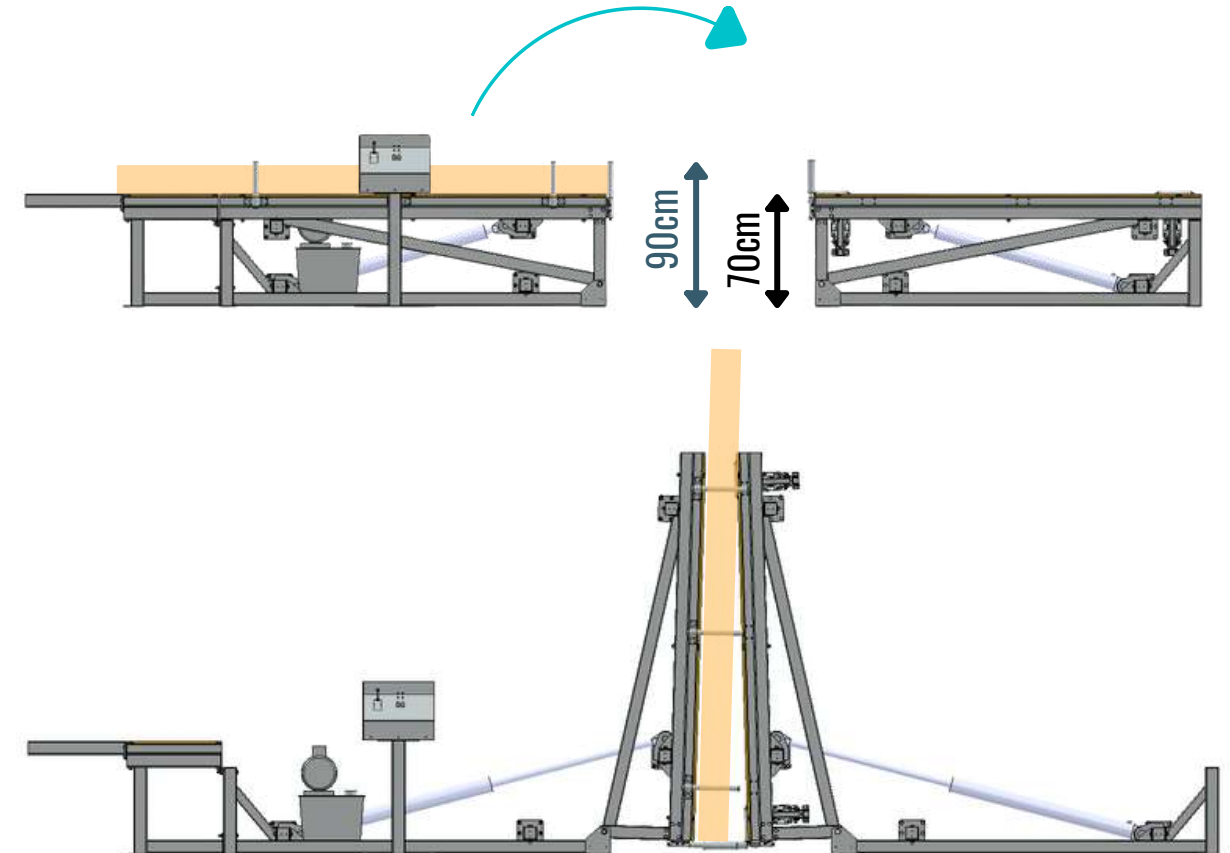


- Powder-coated steel construction
- Plywood top covered with HPL - impact and scratch-resistant
- Mounting holes for clamping pistons at 150mm intervals
- Removable locking pins
- Modular design for self-assembly (assembly time: 3 hours)
- Possibility of expanding with additional table segments
- Permissible load: 150kg/m²
- Possibility of using transport rollers on the table surface

ER- 03H TWO-WING ROTARY TABLE with hydraulic drive



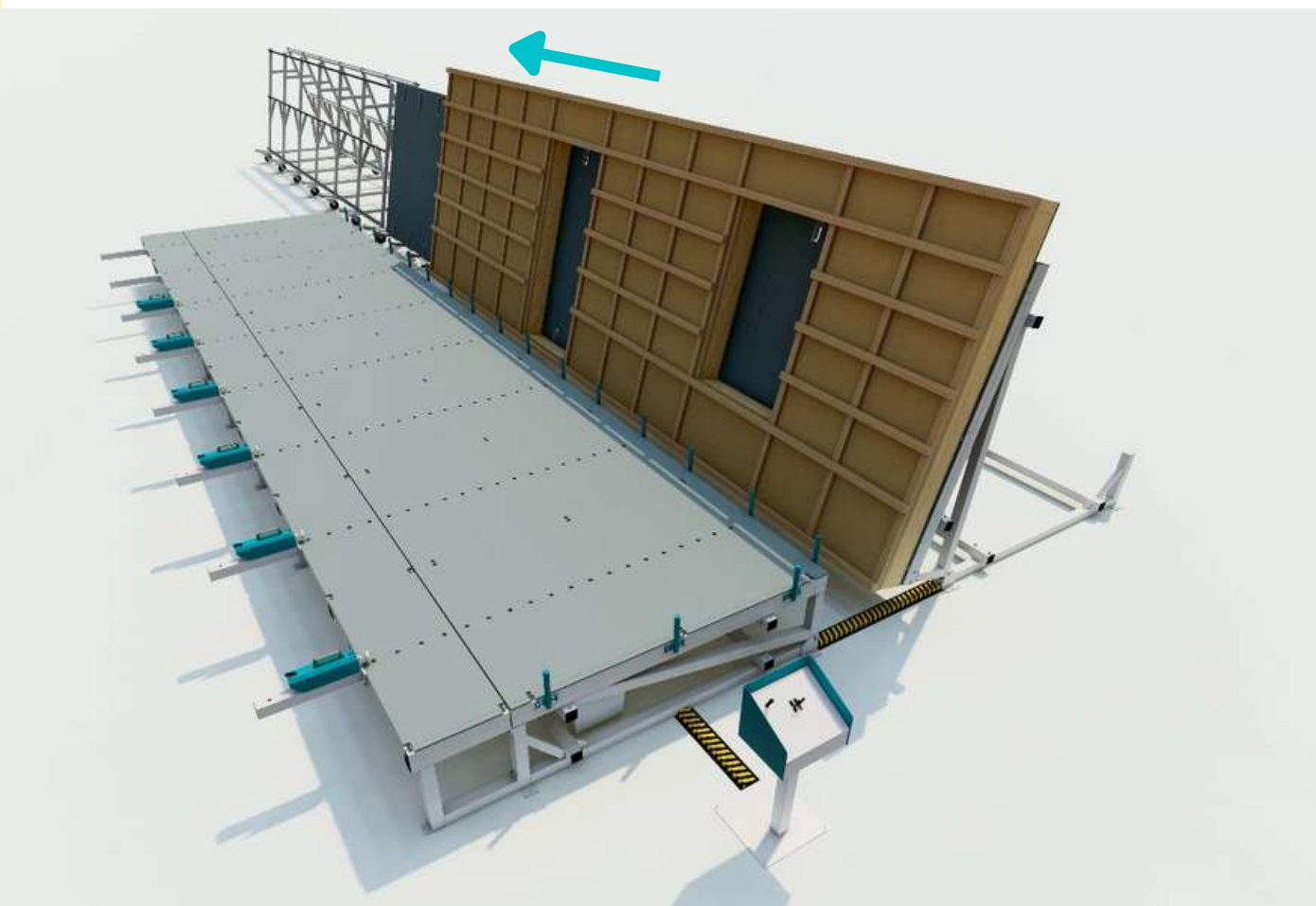
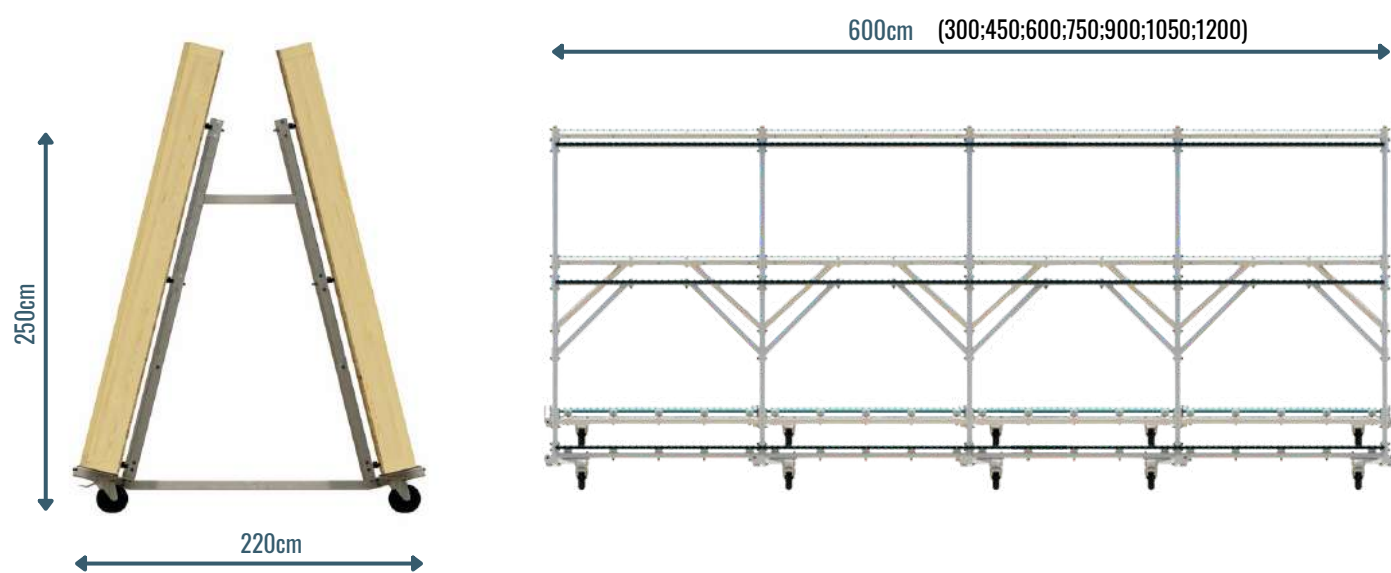
The ER-03 butterfly table is a comprehensive solution for complete prefabrication of wall and floor elements. The option to use horizontal and vertical rollers within the table's space (pneumatically extendable) allows for configuring and expanding the production line with additional fixed or rotary tables.



- Hydraulic drive - operating pressure 120 - 140 BAR
- Permissible load: 100kg/m² (e.g., for a 9m table - 2700kg)
- Powder-coated steel construction
- Plywood top covered with HPL - impact and scratch-resistant
- Mounting holes for clamping pistons at 150mm intervals
- Removable locking pins
- Modular design with the option to expand with additional segments
- Possibility of using transport rollers

WT- 01

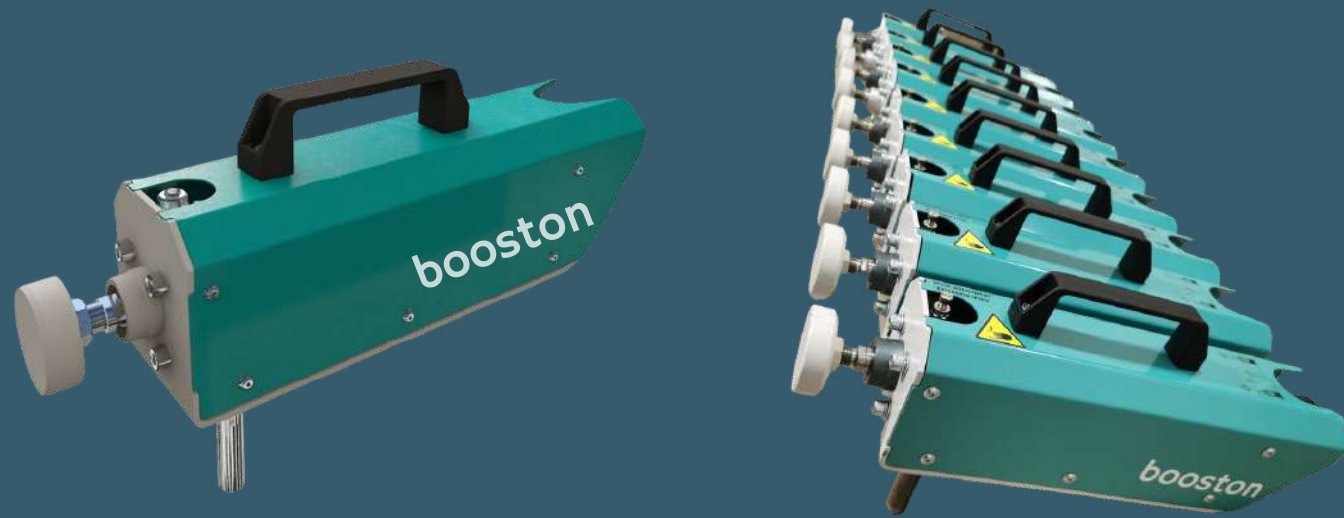
WALLTRANS - WT-01



- Modular design of the WT-01 transporter - length from 3m to 12m
 - Powder-coated steel construction
 - 360-degree swivel wheels with brakes
 - Possibility of using roller strips (3 lines on one side of the transporter)
 - Possibility of using support rollers
- Modular design with the option to expand with additional segments

SD-01

CLAMPING CYLINDER



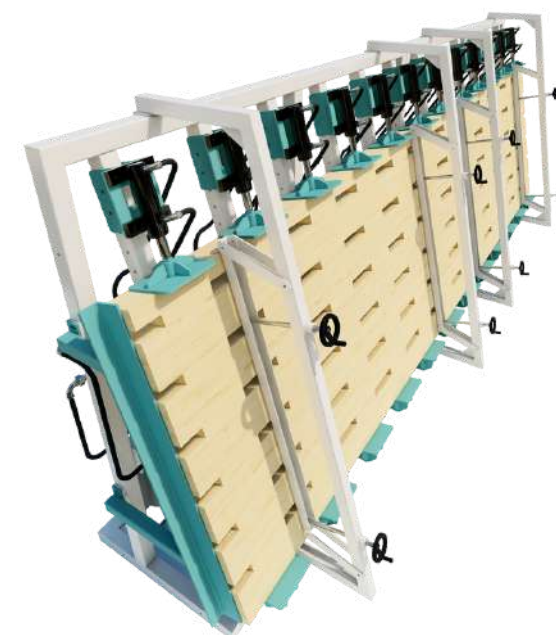
- Powder-coated steel housing
 - Cylinder stroke – 160mm
 - Steel locking pin used in tables ER-01, ER-02, ER-03
 - Clamping force – 140kg at operating pressure of 8 BAR
 - 3-position control valve
 - Extension speed adjustment – throttling valve
- Quick-release pneumatic mechanism



WOOD GLUING PRESS

PR-01

- Maximum height of wooden elements: 1500mm
 - Maximum width of wooden elements: 240mm
 - Maximum length for a single module: 3000mm or 4500mm
 - Possibility of extending the press with additional modules
 - Hydraulic system in the offered press (3000mm): 6x 5000kg = 30000kg
 - When gluing a beam with a width of 120mm, the pressure is 8.3kg/1cm²
- We also have presses with pressure equal to 40000kg and 45000kg (achieving loads of 11.1kg/cm² and 12.5kg/1cm²) - please inquire for details



PD- 01

ROLLER CONVEYOR KIT FOR DEWALT SAW - DWS780

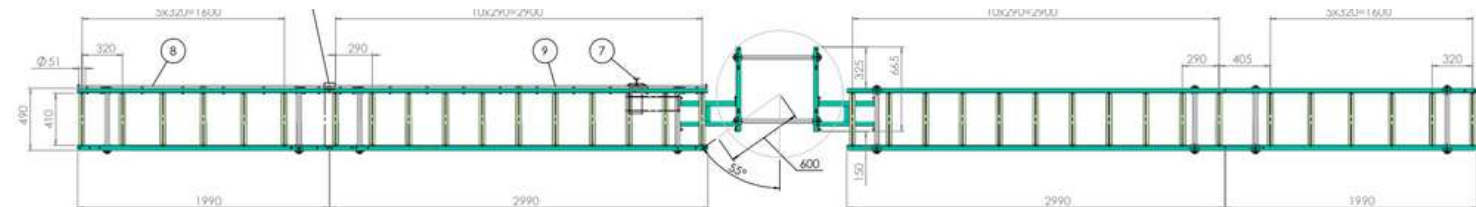


HAND MEASURE

- Steel structure on a 12x30mm guide
- Lifting latch
- Mounting screws
- Self-adhesive measuring tape (from right to left or from left to right)
- Steel indicator



EXAMPLE CONFIGURATION 2m + 3m + BASE + 3m + 2m



DWS780 SAW BASE - PPDWS780

- Painted steel structure in RAL7047 color
- Mounting screws
- Dedicated holes for DWS780 saw installation
- Adjustable height
- Modular construction for self-assembly



ROLLER TRANSPORTER PR200 - 2m

- Steel structure painted in RAL7047 and 5018 color
- Length: 2000mm
- Permissible load: 100kg / 1m
- Mounting holes for guide attachment
- Adjustable height: 930mm +/- 50mm



ROLLER TRANSPORTER PR300 - 3m

- Steel structure painted in RAL7047 and 5018 color
- Length: 3000mm
- Permissible load: 100kg / 1m
- Mounting holes for guide attachment
- Adjustable height: 930mm +/- 50mm