

**Gear Hobbing Machine**  
**JEIL MACHINE JB-150-CNC**

(Max. Module 4 x Gear Dia. 150mm, YOM :1997)



Machine Serial No. : 15007

**Price : USD35,000 (FOB BUSAN Basis)**

DAEHAN TRADING CO., LTD.  
(Cell : +821087713603)

Jeil Machine's JB-150-CNC hobbing machine is a piece of equipment manufactured based on the technical specifications of the Japanese KashiFuji KN-150 model.

1. Key Specifications (JB-150-CNC)

- 1)Max Machining Diameter: 150 mm
- 2)Max Module: 4 Module
- 3)Control Axes: 5-Axis Control (CNC) : FANUC 0M
- 4)Max Helix Angle:  $\pm 45^\circ$

2. Detailed Working Range

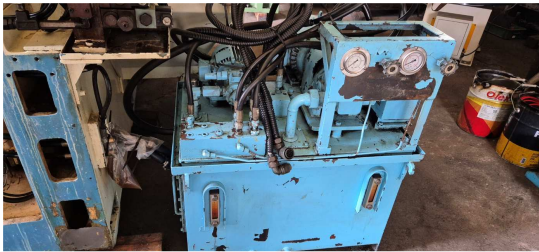
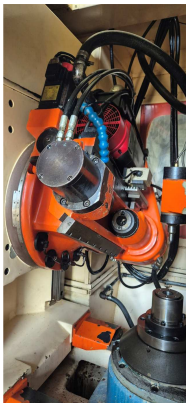
- 1) Axial Feed: 400 mm
- 2)Hob Shift: 130 ~ 150 mm
- 3)Hob to Table: 15 ~ 150 mm
- 4)Table Diameter:  $\varnothing$  190 mm
- 5)Hob Speed: 100 ~ 850 rpm

3. Other Features

- 1)Machine Weight: Approx. 7,000 kg
- 2)Installation Area: Approx. 1,815 × 2,475 mm  
(Height approx. 2,750 mm)
- 2) Auxiliary Equipment: Chip Conveyor

**Please be advised that this equipment is optimized for machining spur gears and helical gears, and since its structure is nearly identical to KashiFuji equipment, consumables and machining methods are mutually compatible.**

1. Photos and At site





----- The end of Document -----