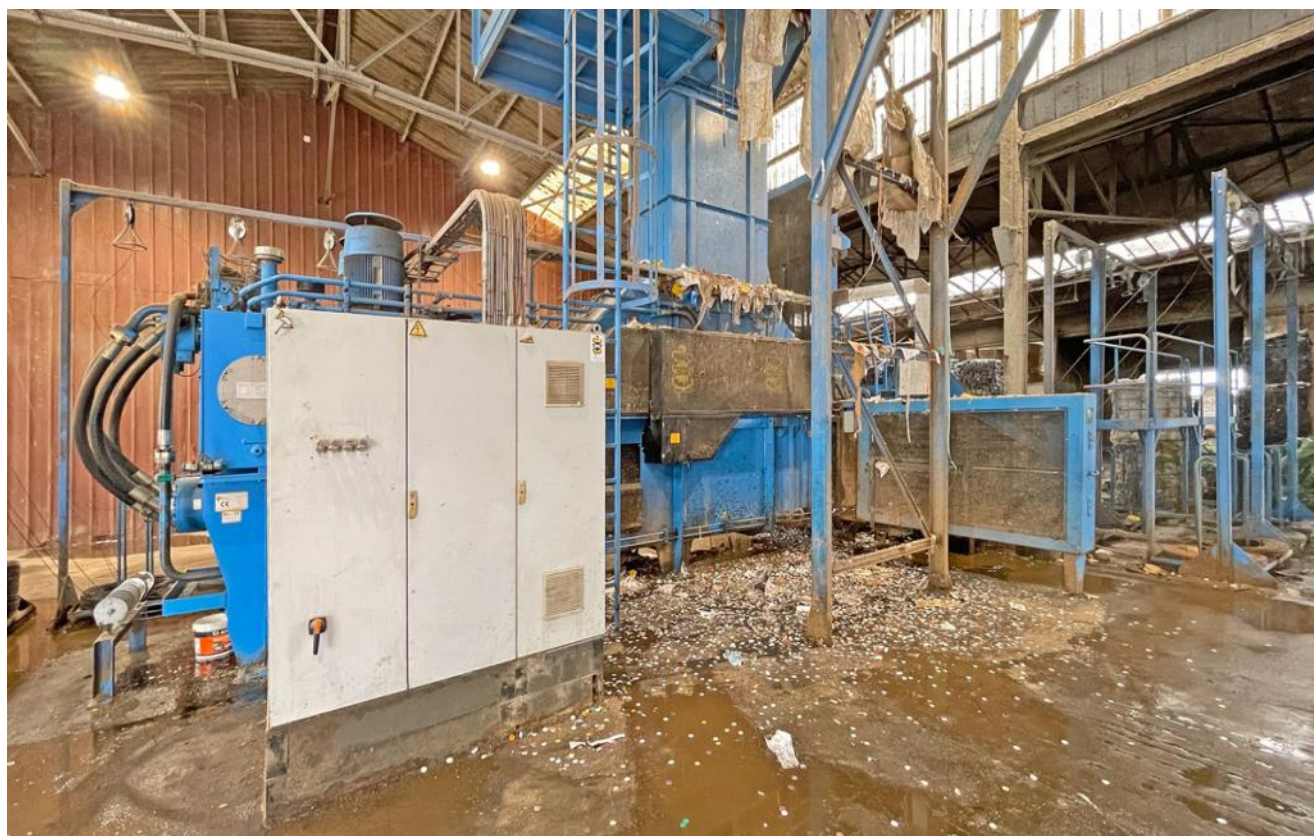


Baler BOA, type Impress D130.110.B.5-(5R).1.6, 127 t pressing force, yoc 2009, drive power 2 x 55 kW, with 10-fold cross tying system, with conveyor



As you can see from the photos, this machine has some signs of wear that should be repaired and removed before it is used again. A basic maintenance and partial overhaul is recommended. The cylinder tube of the main hydraulic cylinder has a hairline crack and should definitely be replaced. The machine is expected to remain in single-shift operation until 03/2025 and will then be replaced by a new press with conveyor belt.

A complete baling press system is for sale, consisting of a chain belt conveyor, the baling press with wire stations and bale chute.

Technical data baler:

Manufacturer BOA
Type Impress D130.110.B.5-(5R).1.6
Year of construction 2009
Press power main press 127 tons
Specific press capacity 10,7 kg/cm²
Working pressure 280 bar
Feed channel 1.620 x 972 mm (l x w)
Press volume / cycle 4,1 cbm
Volume throughput without load up to 865 cbm/hour
Cycle time under operating conditions 22 sec.
Press stroke 2.900 mm
Bale size 1.100 x 1.100 mm (w x h) length adjustable
Driving power 2 x 55 kW
Connected load 132 kW
Tying system 5-fold vertical, 5-fold horizontal, fully automated
Throughput rate at a
bulk weight of 30 kg/cbm up to 17 to/h
bulk weight of 50 kg/cbm up to 29 to/h
bulk weight of 100 kg/cbm up to 37 to/h
bulk weight of 150 kg/cbm up to 51 to/h
Bale weight up to 1.200 kg

Baler BOA, type Impress D130.110.B.5-(5R).1.6, 127 t pressing force, yoc 2009, drive power 2 x 55 kW, with 10-fold cross tying system, with conveyor

Volume hydraulic oil tank 1,850 L
SPS controller Siemens S 7
Operating panel SiemensToughscreen Multi Panel
Transport dimensions baler approx 12.741 x 2.400 x 3.360 mm (l x w x h)
Machine weight baler approx. 50 tons

Technical data for the conveyor belt

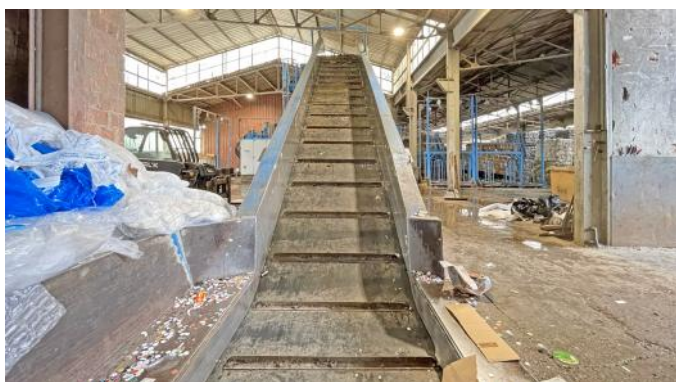
Manufacturer BOA
Type 1700 HBS 32° KTH 11000 x 13076 x 1500
Year of construction 2009
Drive power 11 kW
Variable belt speed
Feed conveyor length 11,000 mm
Length of ascending belt 13,076 mm
Pitch 32°
Useful width 1,700 mm
Height of side wall of infeed conveyor, inside 800 mm
Height of side wall of ascending conveyor, inside 500 mm
Pit dimensions to conveyor belt 14,616 x 3,550 / 2,150 x 1,750 mm (l x w x d)

Comments:

As you can see from the photos, this machine has some signs of wear that should be repaired and removed before it is used again. A basic maintenance and partial overhaul is recommended. The cylinder tube of the main hydraulic cylinder has a hairline crack and should definitely be replaced. The machine is expected to remain in single-shift operation until 03/2025 and will then be replaced by a new press with conveyor belt.

An inspection of the machine during operation, including the use of materials, is possible by appointment. We accept no liability for the technical details or any errors.

Baler BOA, type Impress D130.110.B.5-(5R).1.6, 127 t pressing force, yoc 2009, drive power 2 x 55 kW, with 10-fold cross tying system, with conveyor



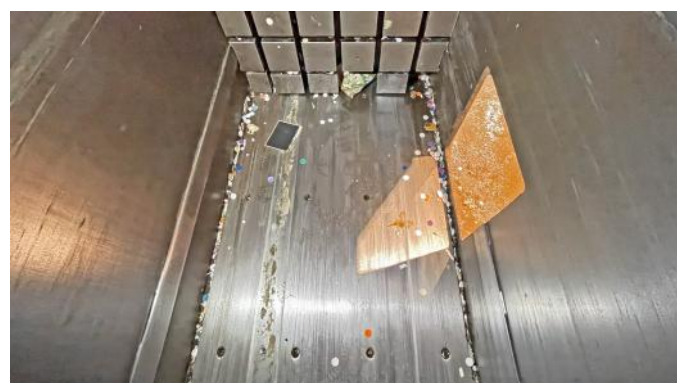
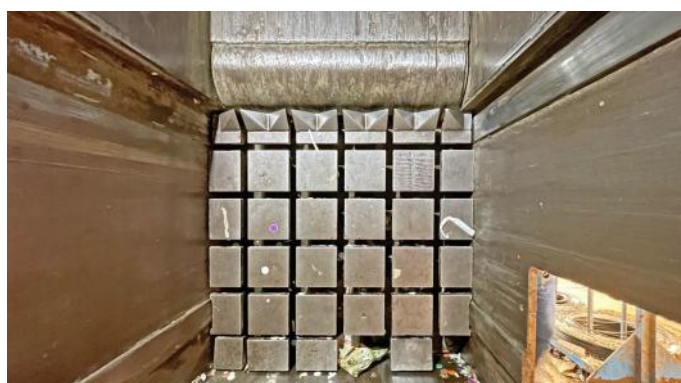
Baler BOA, type Impress D130.110.B.5-(5R).1.6, 127 t pressing force, yoc 2009, drive power 2 x 55 kW, with 10-fold cross tying system, with conveyor



Baler BOA, type Impress D130.110.B.5-(5R).1.6, 127 t pressing force, yoc 2009, drive power 2 x 55 kW, with 10-fold cross tying system, with conveyor



Baler BOA, type Impress D130.110.B.5-(5R).1.6, 127 t pressing force, yoc 2009, drive power 2 x 55 kW, with 10-fold cross tying system, with conveyor



Baler BOA, type Impress D130.110.B.5-(5R).1.6, 127 t pressing force, yoc 2009, drive power 2 x 55 kW, with 10-fold cross tying system, with conveyor

