



16x exhaust gas cleaner

MTU/Rolls-Royce trailer mounted exhaust gas cleaners
for diesel/natural gas engines 1020-3300KVA

Approx 50 running hours per installation

Made in 2023

(used for commissioning diesel engines at a datacenter)



For Sale from the Netherlands: Polder Developments BV Robert Kielstra 0031-620019698



Type: Containerized Mobile Exhaust Gas Aftertreatment System

Brand: MTU Rolls-Royce

Technical specifications

The installation is designed to reduce NOx emissions of Diesel/ natural gas Engines ranging from 1020 tot 3300KW.

In the table below examples of diesel engine data for which the Exhaust gas cleaner is suitable are shown:

Fuel		Diesel			
Load (design point)	%	100			
Engine Power	kW	1020	2000	2200	2680
Flue gas volume (wet)	Nm³ / h	5229	8215	10164	13731
Exhaust gas temperature (Inlet catalyst)	°C	476	463	446	406
H ₂ O content	%	8	8	8	8
O ₂ content actual, dry	%	10	10	10	10
Reference-O ₂	%	5	5	5	5
NOx as NO ₂ inlet catalyst, dry	mg/Nm³ @ Ref.-O ₂	2612	3164	3029	3152
PM (Particulate Matter) inlet SCR catalyst, dry	g/kWh	--	--	0,23	--

EXHAUST GAS DATA (Outlet data, dry):

NOx as NO ₂	mg/Nm³ @ Ref.-O ₂ g/kWh	206 0,67	257 0,67	229 0,67	206 0,67
PM (Particulate Matter)	g/kWh	--	--	0,15	--
NH ₃	mg/Nm³ @ Ref.-O ₂	<10			

The exhaust gas cleaner is also suitable for a 3.3 MW engine from MTU (mtu 20V4000 DS4000), since the required NOx reduction was smaller in that project. If the container system is suitable for a possible engine is always dependent on the combination of exhaust mass flow, temperature and NOx reduction.

Further Technical documentation:

On request we can send the technical specifications as given in the document:

Operating Instructions, Containerized Mobile Exhaust Gas Aftertreatment System

Project: XXXXX, MTU Rolls-Royce,

In this document the following table is shown:

5.1 EGAT system for 18V2000G65-TB and 20V4000G94LF

Key data

Characteristic data of the EGAT system:

		Engine 1	Engine 2
Engine	Type	18V2000G65-TB	20V4000G94LF
Power	kW	1099	3308
Reducing agent concentration	%	32.5, optionally 40	
NOx reduction	%	>90	

And the following two pictures on the scope of supply:

4.1.2 Exhaust gas aftertreatment system with SCR – Scope of supply

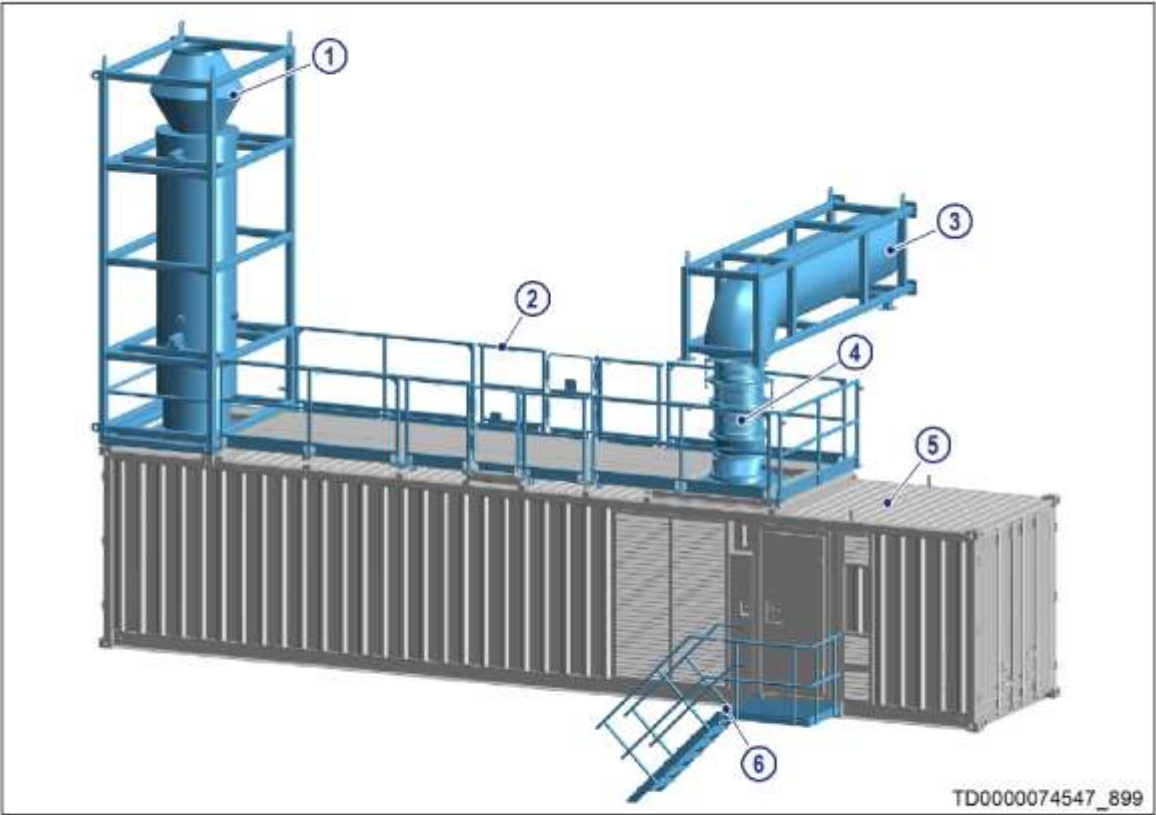


Figure 5: Exhaust gas aftertreatment (on container)

1 Exhaust outlet with deflector	3 EGAT exhaust manifold	5 EGAT container
2 Collapsible safety railings	4 EGAT exhaust pipe bellows	6 Access steps with landing

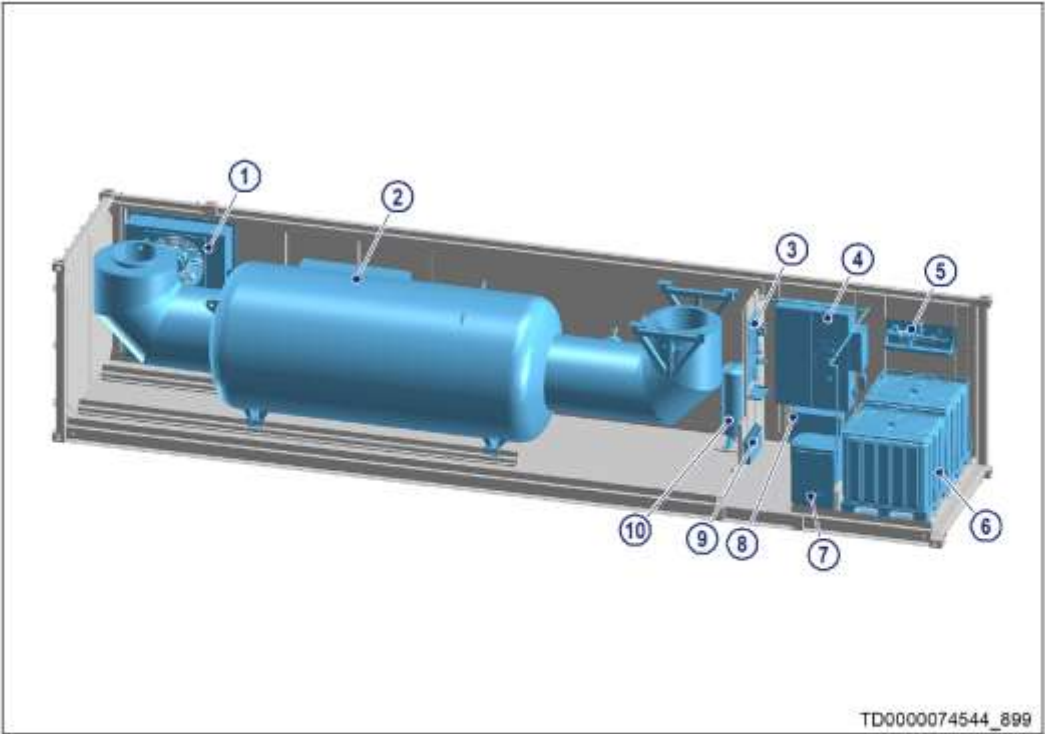


Figure 6: Exhaust gas aftertreatment (in container)

1 Exhaust air fans	5 Reducing agent pump	9 Panel heater for control room
2 SCR housing	6 Reducing agent tank	10 Compressed-air tank
3 Reducing agent dosing system	7 Compressor for compressed air	
4 Control cabinet	8 Junction box	

Service options

The installations are originally branded, designed and sold by MTU Rolls-Royce but where build on their specifications by H+H Engineering & Service GmbH.

H+H Engineering & Service GmbH have quoted to the owner the option to commission and/or supply one year warranty.

Also other party’s are open to commission and service the installations.

Options can be further discussed in conjunction with the Seller.



A Rolls-Royce
solution

NAME: EGAT Mobil 40" Container
SERIAL: 96190400009

MASS: 18600 KG L x H x W 12,2 x 2,9 x 2,5 m
AMBIENT: 40 °C ALTITUDE 400 m

MANUFACTURE YEAR: 2023

Rolls-Royce Solutions GmbH
Maybachplatz 1
88045 Friedrichshafen – Germany



37.13.MMN425

Made in Germany

MTU a Rolls-Royce Solution

NAME: EGAT MOBIL 40"Container

SERIAL: 96190400009

MASS: 18.600kg

LxBxH: 12,2x2,9x2,5m

Ambient: 40C

Altitude 400m













www.niessing.de

Schalldämpfer / SCR System

Nr. 108778 - 107

H+H Projekt Nr. PA2020 - 1005

-XHSC20CT020-



7112

• LAPP / MUEL. 3111F-001 04.8







MEHLER ME CE  
ELEKTROTECHNIK Ges.m.b.H.
Lange Gasse 3, 4493 Wolfers, AUSTRIA

SCR-ANSCHLUSSKASTEN+X5493910054939-40

type designation		
780 x 492 x 250mm		
dimension WxHxD		
2023 / 13	EN 62208	
year / week of manufact.	valid standards	
IP54	I	
protection type (enclos.)	protection class	routine test

MEHLER ME CE  
ELEKTROTECHNIK Ges.m.b.H.
Lange Gasse 3, 4493 Wolfers, AUSTRIA

SCR-ANSCHLUSSKASTEN+X5493910054939-40

type designation		
AU22-014788	2023 / 13	EN 61439-2
order number	year / week of manufact.	valid standards
230/400VAC	50Hz	63A
rated voltage	frequency	rated current
IP20C	I	M.G
protection type (front)	protection class	routine test







ALARM

WARNING

READY



Declaration - Original

Model: SX 8

Material No.: 100860.11

Serial No.: 2178

**KAESER
KOMPRESSOREN**

page 1 of 14

EC-/EU-Declaration of Conformity

Product Identification: 9164363

Name and address of the manufacturer:

KAESER KOMPRESSOREN SE
Carl-Kaeser-Straße 26
96450 Coburg
GERMANY

This declaration of conformity is issued under the sole responsibility of the manufacturer

Object of the declaration:

Description: Rotary screw compressor

Model: SX 8

Material No.: 100860.11

Serial No.: 2178

The object of the declaration described above is in conformity with the relevant Union harmonisation legislation listed below:

2006/42/EC Machinery Directive (OJ L 157, 9.6.2006, p. 24-86)

In respect to the electrical risks, the safety objectives of the Low Voltage Directive 2014/35/EU according to Annex I No. 1.5.1 of the Machinery Directive 2006/42/EC have been met

Name and address of the person authorised to compile the technical file

KAESER KOMPRESSOREN SE
Carl-Kaeser-Straße 26
96450 Coburg
GERMANY

2014/53/EU Radio Equipment Directive (OJ L 153, 22.5.2014, p. 62-106)

In respect to the safety requirements, the essential requirements of the Low Voltage Directive 2014/35/EU according to point (a) of Article 3(1) of the Radio Equipment Directive 2014/53/EU have been met.

In respect to electromagnetic compatibility, the essential requirements of the Electromagnetic Compatibility Directive 2014/30/EU according to point (b) of Article 3(1) of the Radio Equipment Directive 2014/53/EU have been met.

Standards complied with:

EN 61000-6-2:2005

EN 61000-6-3:2007+A1:11

In respect to radio spectrum matters, the essential requirements of Article 3(2) of the Radio Equipment Directive 2014/53/EU have been met.

Standards complied with:

EN 300 330 V2.1.1 (2017-02)



KAESER KOMPRESSOREN SE
Registered office:
Carl-Kaeser-Straße 26, D-96450 Coburg
Phone: +49 9301 6400
Fax: +49 9301 640 132
E-Mail: info@kaeser.com
http://www.kaeser.com

Bank information:
Commerzbank AG, Coburg
IBAN: DE87 7634 0301 0050 0230 00
Deutsche Bank AG, Coburg
IBAN: DE33 7607 0012 0000 0000 00
HypoVereinsbank UniCredit Bank AG, Coburg
IBAN: DE33 7633 0070 0001 4312 19

Chairman of the Supervisory Board:
Dipl.-Ing. (FH) Carl J. Kaeser
Management Board:
Dipl.-Ing. (FH) Thomas Kaeser
Dipl.-Ing. (FH) Thomas Kaeser
Dipl.-Ing. (FH) Thomas Kaeser

TCE-12/090755_2/1C

Declaration - Original

Model: SX 8

Material No.: 100860.11

Serial No.: 2178

**KAESER
KOMPRESSOREN**

page 2 of 14

2009/125/EC

Directive establishing a framework for the setting of ecodesign requirements for energy-related products (OJ L 285, 31.10.2009, p. 10-35)

Conformity with this directive is declared on the basis of the implementing measure shown below.

327/2011 Commission Regulation implementing Directive 2009/125/EC with regard to ecodesign requirements for fans (OJ L 90, 6.4.2011, p. 8-21)

KAESER KOMPRESSOREN SE hereby declares the conformity with the Fan Regulation with the material number(s) listed below which are contained in the aforementioned machine.

327011 00421

2011/65/EU

Directive on the restriction of the use of certain hazardous substances in electrical and electronic equipment (OJ L 174, 1.7.2011, p. 88-110)

Standards complied with:

EN IEC 63000 2018

Signed for and on behalf of KAESER KOMPRESSOREN SE:

Coburg
(place)

12.04.2023
(date)

Dipl.-Ing. (FH) Thomas Kaeser
(Signature / Chairman of Management Board)



KAESER KOMPRESSOREN SE
Registered office:
Carl-Kaeser-Straße 26, D-96450 Coburg
Phone: +49 9301 6400
Fax: +49 9301 640 132
E-Mail: info@kaeser.com
http://www.kaeser.com

Bank information:
Commerzbank AG, Coburg
IBAN: DE87 7634 0301 0050 0230 00
Deutsche Bank AG, Coburg
IBAN: DE33 7607 0012 0000 0000 00
HypoVereinsbank UniCredit Bank AG, Coburg
IBAN: DE33 7633 0070 0001 4312 19

BC COBAGFFXXX
BC DEUTDE33XXX
BC HYVODE33XXX

Chairman of the Supervisory Board:
Dipl.-Ing. (FH) Carl J. Kaeser
Management Board:
Dipl.-Ing. (FH) Thomas Kaeser
Dipl.-Ing. (FH) Thomas Kaeser
Dipl.-Ing. (FH) Thomas Kaeser





Betriebsanleitung

HORNET
W 85 H INOX

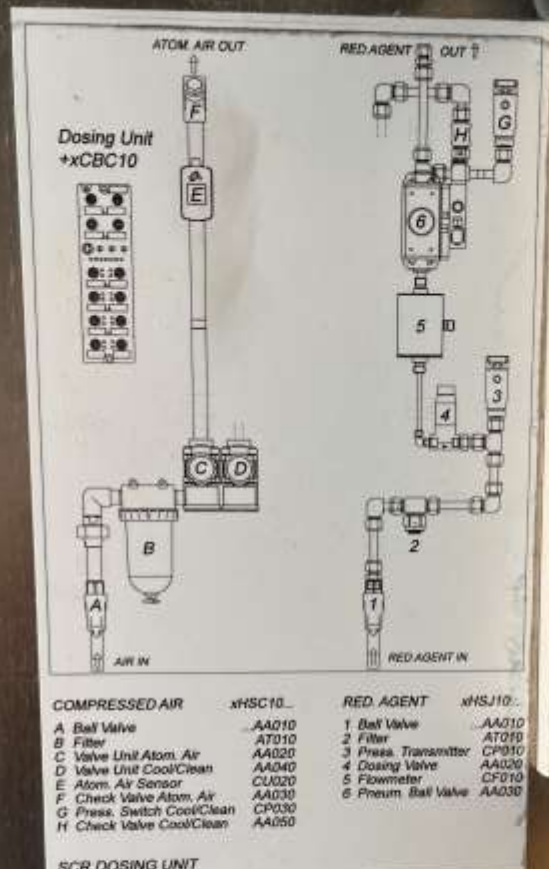
Originalbetriebsanleitung











SCR DOSING UNIT

Dosing Unit +1CBC10

H+H Engineering & Service GmbH
service@huhes.de www.huhes.de

Project n° PA2020_1005

Project 15xAMS Mobile Trailer

Customer Rolls Royce

Order n° 4761088946

Year of Manufacture 2020



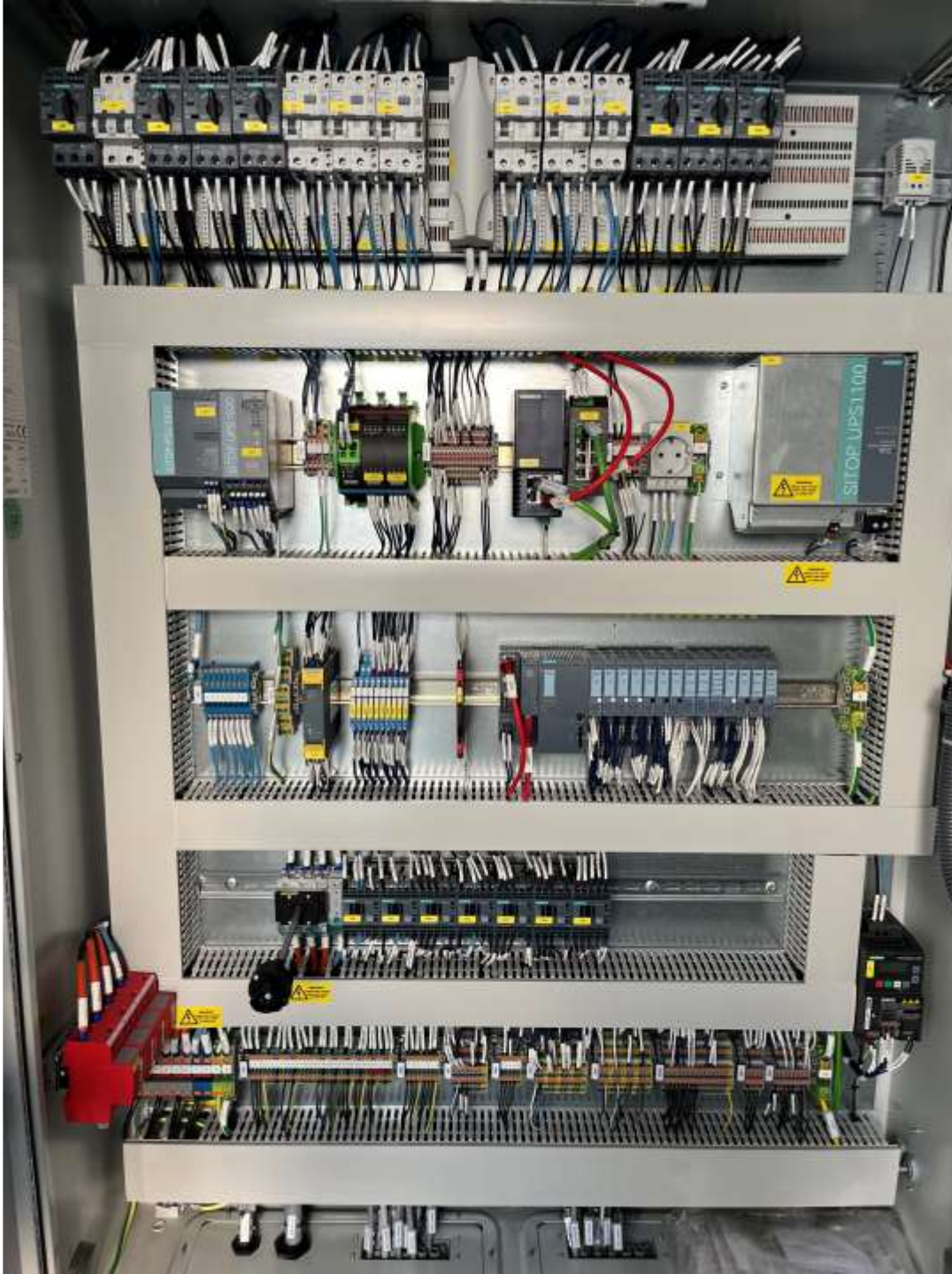
WW218UH643.2
+1CBC10
Cal-Nr. 0018

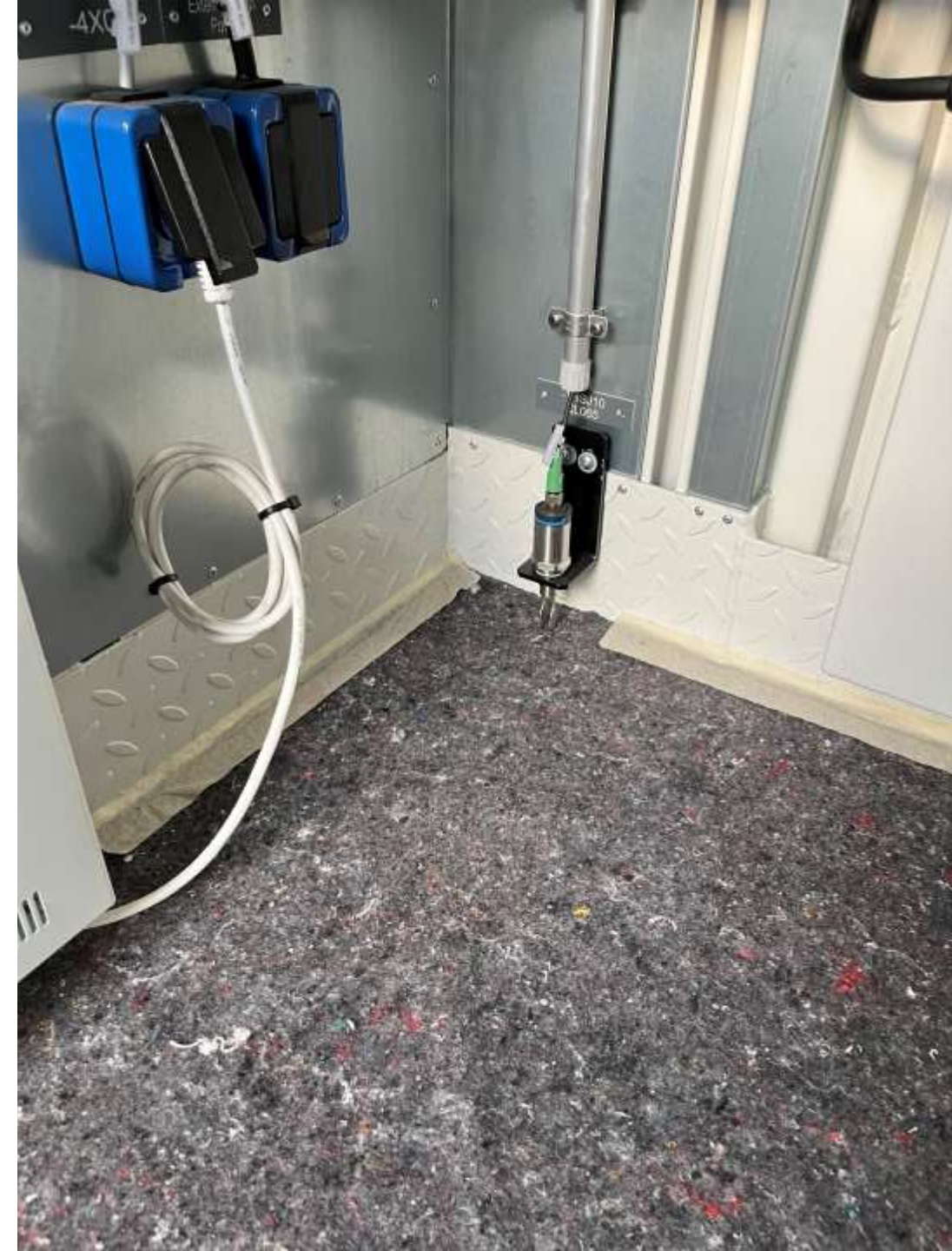


PA2020_1005

=SCR+0CBC10

		PLC Control Cabinet	+0CBC10
<small>H-H Engineering & Service GmbH service@hufes.de www.hufes.de</small>			
Project n°	PA2020_1005		
Project	15xAMS Mobile Trailer		
Customer	Rolls Royce		
Order n°	4761088946		
Year of Manufacture	2020		



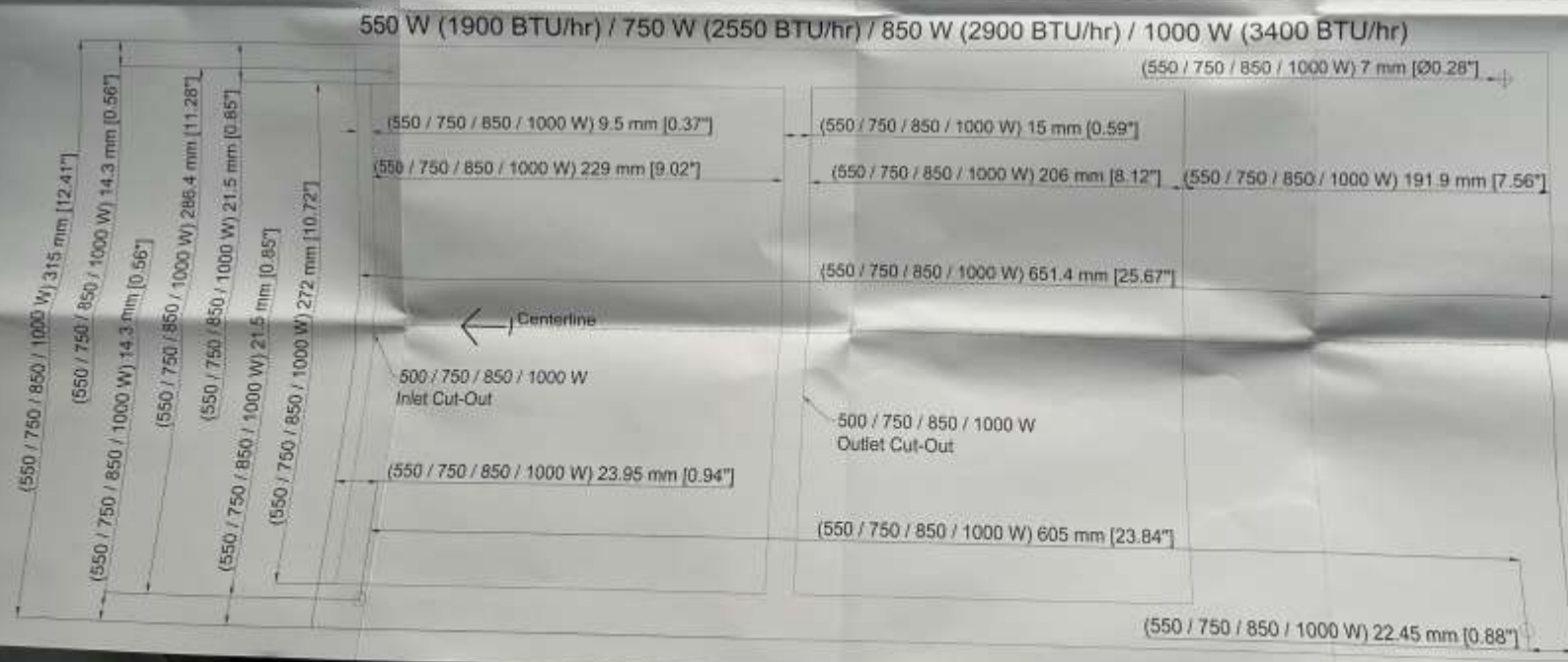




heater

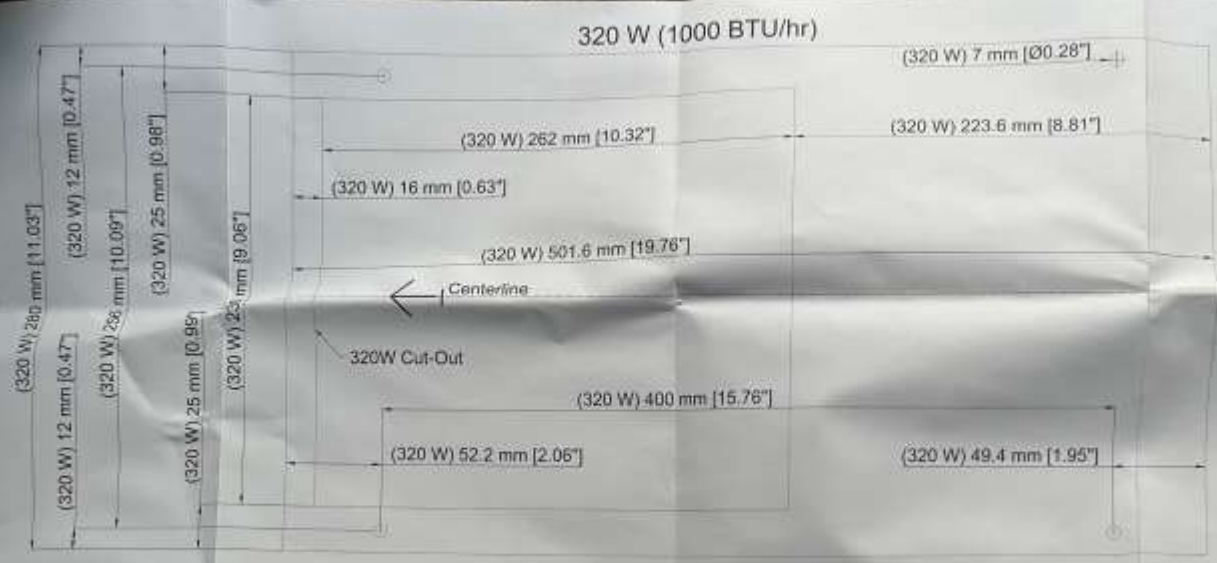
Normal power

External 230volt
power



Hinweis: Die Abmessungen dieser Luftbedeckungslösung können sich durch Luftfeuchtigkeit während des Legeprozesses verändern! Bitte überprüfen Sie die gezeigten Abmessungen vor dem Einbau.

Note: This template may have been affected by air humidity, please check this template by verifying values of its layout dimensions before using.



Hinweis: Die Abmessungen dieser Luftbedeckungslösung können sich durch Luftfeuchtigkeit während des Legeprozesses verändern! Bitte überprüfen Sie die gezeigten Abmessungen vor dem Einbau.

Note: This template may have been affected by air humidity, please check this template by verifying values of its layout dimensions before using.







Nießing

Number 4761089356

Type: SCR7

Hight: 4,99m

Year of Manufacture: 2023

Outside diameter: 872x0,8mm

Inside diameter: 610x3mm

Weight: 2000kg

Intermediate exhaust piping

Make: Nießing

Quite some coupling damaged











Stairways to enter trailer
Make: Munk









 **MUNK**
GÜNZBURGER STEIGTECHNIK

 **MUNK**

GÜNZBURGER STEIGTECHNIK

MUNK GmbH | Rudolf-Diesel-Str. 23 | 89312 Günzburg
Phone +49(0)8221 / 3616-01 | info@munk-group.com

www.munk-group.com

zul. Belastung **150 kg/m²**
zul. Gesamtbelastung: **300 kg**
zul. Stufenbelastung: **150 kg**

Anlagentyp: **Plattformtreppe**
Baujahr: **07 / 2023**
Auftrags-Nr.: **30351218-0030**
Gewicht: **ca. 100 kg**

 **MUNK**

GÜNZBURGER STEIGTECHNIK

MUNK GmbH | Rudolf-Diesel-Str. 23 | 89312 Günzburg
Phone +49(0)8221 / 3616-01 | info@munk-group.com

www.munk-group.com


permissible surface load: **150 kg/m²**
permissible load: **300 kg**
step load: **150 kg**

Typ of construction: **platform stairs**
Year of production: **07 / 2023**
Order number.: **30351218-0030**
Weight: **ca. 100 kg**

Trailers
Make: Krone





 **KRONE**
www.krone-trailer.com

Typ **SD**

[Empty box]

L:	12640 mm
W:	2495 mm
b/b _{MAX} :	11414 mm
b _{MIN} :	mm
[Empty box]	




Plate relating to dimensions pursuant to 96/53/EC

Fahrzeugwerk Krone Beteiligungs-GmbH
Heinrich-Krone-Str. 10 / 48480 Spelle

e1*2007/46*0232

WKESD000001115782

	kg	41000	kg
0-	kg	0-	14000 kg
1-	kg	1-	9000 kg T
2-	kg	2-	9000 kg T
3-	kg	3-	9000 kg T

Manufacturer's statutory plate pursuant to CR (EU) 19/2011





Firma
PAX Bouw- en Industrieservice BV
Venus 102
8448 GW HEERENVEEN
NEDERLANDE

Auftraggeber
Rolls-Royce Solutions Ruhstorf GmbH
Rothofer Str. 8
94099 RUHSTORF
DEUTSCHLAND

Wiederholungsdruck:
 Lieferscheinnummer / Lieferscheindatum
 86091539 / 19.05.2023
 Auftragsnummer / Auftragsdatum
 2673150 / 23.09.2022
 Bestellnummer Kunde / Bestelldatum
 4761089512
 Kundennummer
 Auftraggeber: 4363410
 Warenempfänger: 4363410
 Sachbearbeiter
 Herr Maik Memering
 Tel.: +49(0)5951 209-8045
 Fax:
 maik.memering@krone.de

Leverbijdingen: DAP-Werte door Wichers Trucking B.V., Vrijzandveen

Seite 1 von 2

Pos	Bezeichnung
000010	KRONE Box Liner SDC 27 eLT3 Frg.-Id.-Nr. WKESD000001115782 Zulassungsland: D Folgende Bedienungsanleitungen/Dokumente wurden mitgegeben: Königszapfen, Stützvorrichtung Jost, Krone Achse mit Scheibenbremse *verladen mit 1115781 + 1115783*

Die technisch optimale Funktion der Bremsanlage ist nur gewährleistet, wenn das Fahrzeug mit einem entsprechend zugeordneten Zugfahrzeug kombiniert ist. Eine Bremszugabstimmung ist je nach Einsatz, spätestens nach 3000 km Laufleistung, unbedingt erforderlich und vom Fahrzeughalter durchzuführen.

Bei Zugfahrzeugen mit elektronisch geregelten Bremsanlagen (EBS) ist bezüglich Bremsen-Zugabstimmung sowie im Falle von Bremsproblemen der Zugfahrzeughersteller anzusprechen.

Die Radmuttern müssen spätestens nach 100 km Fahrstrecke nachgezogen werden.

Ware vollständig und in einwandfreiem Zustand erhalten

EG - Länder

Ich / Wir versichere (n), dass - gemäß § 17a Abs.2 Nr.4 UStDV - der Liefergegenstand in das übrige Gemeinschaftsgebiet befördert wird.

Zugmaschine: _____ Fahrer: _____

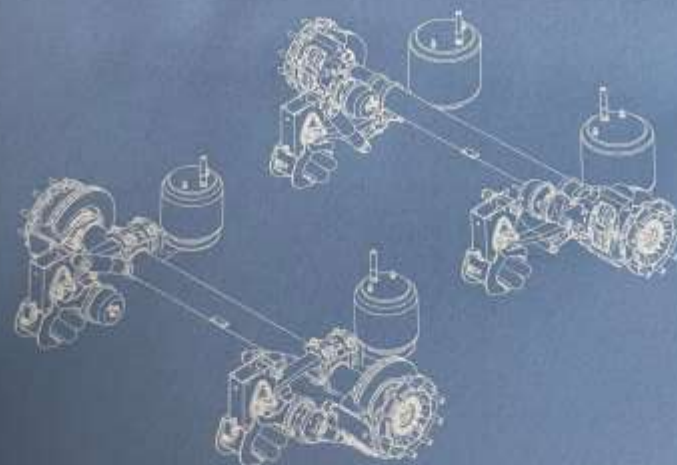
Datum, Unterschrift

Es gelten die Allgemeinen Verkaufs- und Lieferbedingungen und die Garantiebedingungen der Fahrzeugwerk Bernard Krone GmbH & Co. KG, zu finden unter: <https://www.krone-trailer.com/agb/>

Die Datenschutzhinweise nach Art. 13 DSGVO sind einzusehen unter:
<https://www.krone-trailer.com/art-13-dsgvo/>

[illegible]

BETRIEBSANLEITUNG
KRONE TRAILER ACHSEN
Scheibenbremse



515103973-02 DE





Kingpin

DE Montage- und Betriebsanleitung
EN Installation and operating instructions for
FR Instructions de montage et d'utilisation
IT Istruzioni per il montaggio e l'uso
ES Instrucciones de montaje y funcionamiento



JOST

JOST



Modul B & OPTIMA

DE Montage- und Betriebsanleitung
EN Installation and operating instructions
FR Instructions de montage et d'utilisation
IT Istruzioni per il montaggio e l'uso
ES Instrucciones de montaje y funcionamiento

