

Baler Avermann, type AVOS 1410 BS-22/50, 70 t press force, year of construction 2023, only 1,851 pump hours, drive 22 kW, with special press ram



The entire baling line consisting of the Avermann baler, type AVOS 1410 BS-22/50, incl. wire drawing stations and bale chute, the Avermann chain belt conveyor type KGF GB 1500 and the non-contact personal protection system BOREMA APSS IBOR 22 is to be sold as a package. Dismantling and loading is the responsibility of the buyer.

Technical data baler:

Manufacturer Avermann Maschinenfabrik GmbH & Co. KG, Germany

Type AVOS 1410 BS-22/50

Year of construction 2023

Pump operation hours 1,851 hours, as of July 24

Press power main press 70 t (a 70 tonne hydraulic cylinder is installed, special equipment)

Specific press force 90,9 N/cm² (a 70 tonne hydraulic cylinder is installed, special equipment)

Feed channel 1,400 x 1,000 mm

Theoretic cycle time 13 sec

Theoretic throughput capacity 266 m³/h

Bale size 1,100 x 750 (w x h), the length is variable

Drive power 22 kW

Connected load 65 kW

Tying system 4-fold, vertical, fully automatic

Throughput capacity at a

bulk weight of 30 kg/cbm approx. 5,5 t/h

bulk weight of 50 kg/cbm approx. 7,5 t/h

bulk weight of 100 kg/cbm approx. 9,7 t/h

Bale weight with a bale length of approx. 1.2 m up to 500 kg, depends on material

SPS controller Siemens S7-1500

Operating panel Schneider Harmony

Baler dimensions built up 8,610 x 2,400 x 3,835 mm (l x w x h)

Transport weight baler approx. 17 t

Special equipment:

Wear-resistant floor made of HARDOX steel

Baler Avermann, type AVOS 1410 BS-22/50, 70 t press force, year of construction 2023, only 1,851 pump hours, drive 22 kW, with special press ram

Larger main hydraulic cylinder with 70 tonnes of pressing force
Special press ram for pressing loose bulk materials with small grain sizes
OptiCut XS system for lower cutting forces and higher throughput rates
Special pressing piston for pressing "difficult" materials

Technical data for the conveyor belt:

Manufacturer Avermann Maschinenfabrik GmbH & Co. KG, Deutschland
Type KGF GB 1500
Year of construction 2023
Drive power 4.0 kW
Belt speed approx. 0.3 m/second
Length feeding conveyor 2,679 mm
Length elevating conveyor 6,866 mm
Length goose neck 1,272 mm
Grade 35°
Effecting width 1,400 mm
Side wall height 800 mm
Carrier height 50 mm
Carrier distance 750 mm
Belt quality EP 400/3, 3:1 (DIN quality N)
Overall height 4,515 mm
Overall transport dimensions 11,148 x 2,502 mm (l x w)

Technical data on the non-contact personal protection system:

Manufacturer BOREMA Umwelttechnik AG, Switzerland
Type APSS iBOR 22
Year of construction 2023

Condition of the press system:

The entire system is in very good condition due to the short operating time of only 1,851 pump hours and the processing of only paper, cardboard and film.

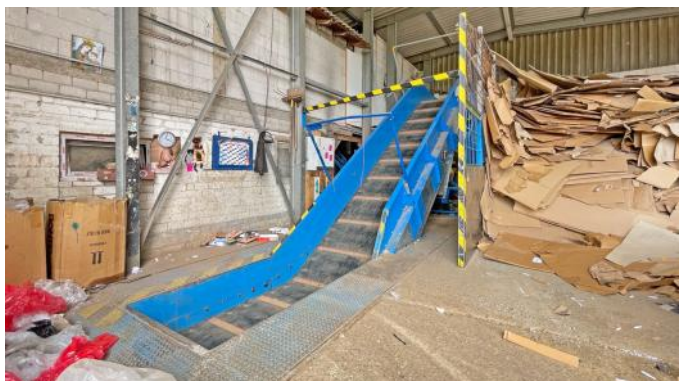
Scope of delivery:

Avermann baler, type AVOS 1410 BS-22/50, incl. wire drawing stations and bale chute
Avermann conveyor belt, type KGF GB 1500
BOREMA personal protection system, type APSS iBOR 22

Comments:

The documentation (Manual, CE-declaration, electr./hydr.-drawings), are completely available.
Inspections are possible after agreement. We will not assume liability for the given technical data and possible errors.

Baler Avermann, type AVOS 1410 BS-22/50, 70 t press force, year of construction 2023, only 1,851 pump hours, drive 22 kW, with special press ram



Baler Avermann, type AVOS 1410 BS-22/50, 70 t press force, year of construction 2023, only 1,851 pump hours, drive 22 kW, with special press ram



Baler Avermann, type AVOS 1410 BS-22/50, 70 t press force, year of construction 2023, only 1,851 pump hours, drive 22 kW, with special press ram



Baler Avermann, type AVOS 1410 BS-22/50, 70 t press force, year of construction 2023, only 1,851 pump hours, drive 22 kW, with special press ram



Baler Avermann, type AVOS 1410 BS-22/50, 70 t press force, year of construction 2023, only 1,851 pump hours, drive 22 kW, with special press ram

