

Sorting cabin with 3 sorting belts, 10 sorting places, air-conditioned, with ventilation system (heated), incl. conveyors (input - output) and bunker belts



The plant is located in Germany, is still fully assembled, connected to electricity and could be inspected in operation (without material input) if required. The sale of the plant takes place ex location, Germany. The dismantling and loading of the entire plant as well as the broom-clean handover of the hall is at the risk and expense of the buyer.

Overview of the equipment of a used sorting plant, year of construction 2009, with a sorting capacity of 25,000 t/year

For sale is a complete used sorting plant for deinking paper, which can also be used for other materials. The plant consists of the following components:

1 piece sorting cabin with an integrated office (control room), external dimensions 14,200 x 11,400 x 4,350 / 8,170 mm (l x w x h), with 3 sorting belts and 10 sorting places, air-conditioned (heated).

1 piece ventilation system for the sorting plant with 17,600 m³/hour, manufacturer VTS Ventus, type VS-120-R-H/S

1 piece infeed conveyor belt, right, no. 10, dimensions 7,360 x 1,200 mm, drive power 3 kW

1 piece infeed conveyor belt, centre, no. 11, dimensions 7,360 x 1,200 mm, drive power 3 kW

1 piece infeed conveyor, left, no. 12, dimensions 6,360 x 1,200 mm, drive power 3 kW

1 piece sorting belt, long, right, no. 15, dimensions 8,350 x 1,200 mm, drive power 2.2 kW

1 piece sorting belt, short, right, no. 17, dimensions 4,350 x 1,200 mm, drive power 1.5 kW

1 piece sorting belt, long, centre, no. 14, dimensions 8,350 x 1,200 mm, drive power 2.2 kW

1 piece sorting belt, short, center, no. 16, dimensions 4,350 x 1,200 mm, drive power 1.5 kW

1 piece sorting belt, left, no. 13, dimensions 5,360 x 1,200 mm, drive power 2.2 kW

1 piece reversing belt, below sorting belts 14 and 15, no. 18, dimensions 5,200 x 1,000 mm, drive power 2.2 kW

1 piece discharge belt (short), no. 17, dimensions 4,350 x 1,200 mm, drive power 1.5 kW

1 piece discharge conveyor, no. 23, dimensions 8,300 x 1,000 mm, drive power 3.0 kW

1 piece bunker belt BB1 (from Hartner ballistic separator) dimensions 25,400 x 2,000 mm

1 piece bunker belt BB2, dimensions 24,000 x 2,000 mm

1 piece bunker belt BB3, dimensions 24,000 x 2,000 mm

1 piece bunker belt BB4, dimensions 11,000 x 2,000 mm

1 piece long discharge conveyor to the warehouse, No. 22, dimensions 28,200 x 1,000 mm, drive power 9.2 kW

Sorting cabin with 3 sorting belts, 10 sorting places, air-conditioned, with ventilation system (heated), incl. conveyors (input - output) and bunker belts

Technical data of the ventilation system for the sorting cabin:

Manufacturer VTS Ventus, Poland
Type VS-120-R-H/S
Min. air capacity 5,815 m³/hour
Max. Air flow rate 17,610 m³/hour
Connected load 108 kW
Static pressure 837 Pa
Stand-by pressure 600 Pa
Filter designation VS 120 B.FLT F5, type EU5
Filter size 592 x 287 mm

Remark:

The plant is located in Germany, is still fully assembled, connected to electricity and could be inspected in operation (without material input) if required. The sale of the plant takes place ex location, Germany. The dismantling and loading of the entire plant as well as the broom-clean handover of the hall is at the risk and expense of the buyer.

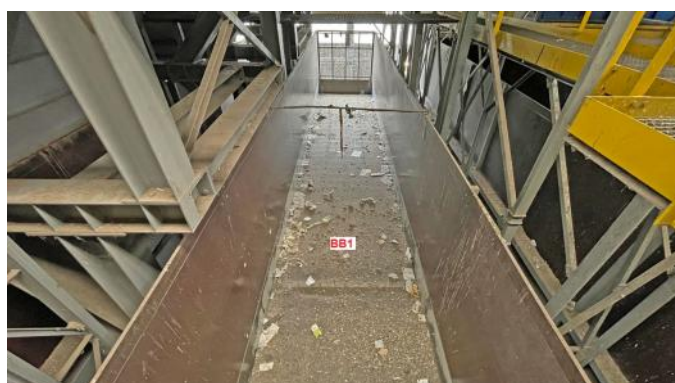
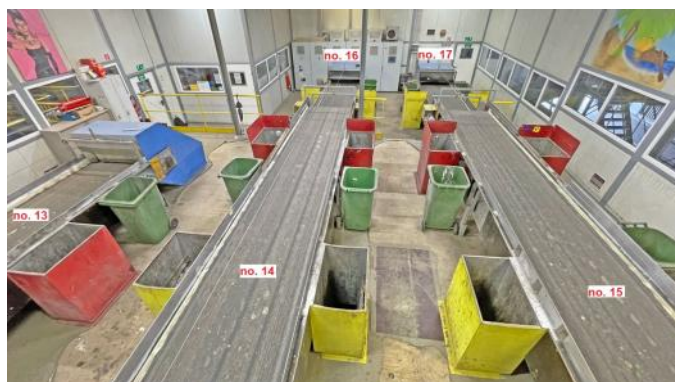
Technical documentation for the system and the components is only available in German.

An inspection of the plant is possible by arrangement. We do not accept any liability for the technical details or any errors.

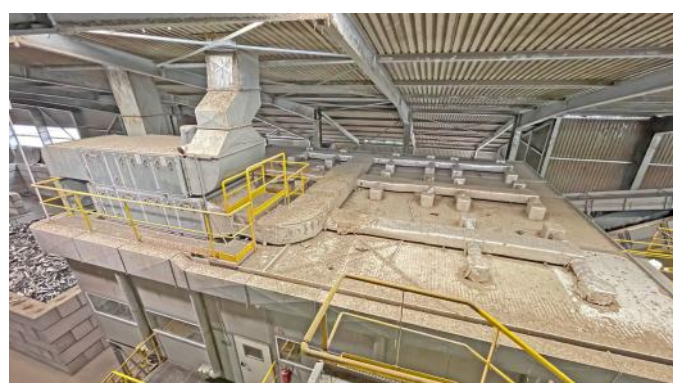
Sorting cabin with 3 sorting belts, 10 sorting places, air-conditioned, with ventilation system (heated), incl. conveyors (input - output) and bunker belts



Sorting cabin with 3 sorting belts, 10 sorting places, air-conditioned, with ventilation system (heated), incl. conveyors (input - output) and bunker belts



Sorting cabin with 3 sorting belts, 10 sorting places, air-conditioned, with ventilation system (heated), incl. conveyors (input - output) and bunker belts



Sorting cabin with 3 sorting belts, 10 sorting places, air-conditioned, with ventilation system (heated), incl. conveyors (input - output) and bunker belts

