

Baler Bollegraaf, type HBC 80 AF, 78 t pressing force, yoc 1994, 51,551 operating hours, drive power 45 kW, with chain belt conveyt and wire stations



A complete baling system is for sale, consisting of a conveyor belt with feed hopper, the baling press with bale chute and wire pulling stations, without wire.

A complete baling system is for sale, consisting of a conveyor belt with feed hopper, the baling press with bale chute and wire pulling stations, without wire.

Technical data baler:

Manufacturer Bollegraaf Recycling Machinery B.V.

Type HBC 80 AF

Year of construction 1994, overhauled by the manufacturer Bollegraaf 2003

Operating hours 51,551 hours, as of December 2024

Number of pressed bales 613,446 pieces, as of December 2024

Main press pressing force 78 tonnes

Pre-press pressing force 45 tonnes

Dimensions of feed chute 1,500 x 1,100 mm (l x w)

Filling volume / pressing cycle 2.9 m³

Theoretical cycle time 22 seconds

Throughput capacity under operating conditions 300 - 450 m³/hour

Bale dimensions 1,100 x 720 mm (w x h), the length is variable

Drive power 45 kW

Connected load, total 60 kW

Tying 5-fold vertical, fully automatic

Throughput capacity with a

bulk density of 30 kg/cbm approx. 10 tonnes/hour

Bulk weight of 50 kg/cbm approx. 18 tonnes/hour

Bulk weight of 100 kg/cbm approx. 30 tonnes/hour

Throughput in whirling mode approx. 20 tonnes/hour

Bale weights with a bale length of approx. 1.2 m approx. 550 - 850 kg

Hydraulic oil tank capacity 900 litres

SPS control manufacturer Schneider Electric

Baler Bollegraaf, type HBC 80 AF, 78 t pressing force, yoc 1994, 51,551 operating hours, drive power 45 kW, with chain belt conveyt and wire stations

Transport weight of baler approx. 24 tonnes

Accessories:

Conveyor belt with feed chute, bale chute and wire pulling stations

Condition of the baler:

The machine was completely overhauled by the manufacturer Bollegraaf in 2003 and later fitted with a new PLC control system from Schneider Electric. The baler was used to compress dried grass into bales. Despite its age, the entire system, including the conveyor belt, is in really good condition and has been regularly serviced. The system is still fully assembled, connected to the power supply and can be inspected during operation without the use of materials.

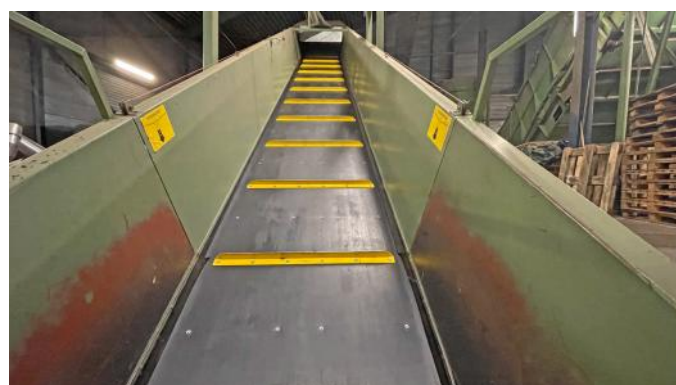
Scope of delivery for the baler:

Baling press with conveyor belt, feed hopper, wire drawing stations and bale chute.

Comments:

Inspections are possible after agreement. We will not assume liability for the given technical data and possible errors.

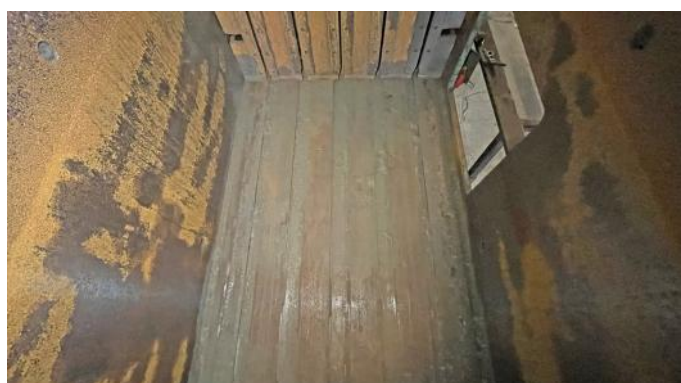
Baler Bollegraaf, type HBC 80 AF, 78 t pressing force, yoc 1994, 51,551 operating hours, drive power 45 kW, with chain belt conveyt and wire stations



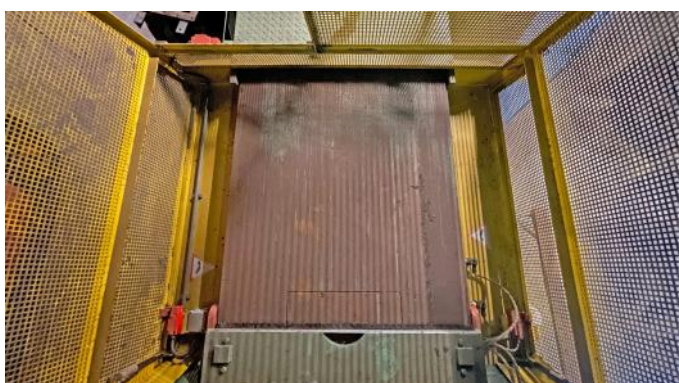
Baler Bollegraaf, type HBC 80 AF, 78 t pressing force, yoc 1994, 51,551 operating hours, drive power 45 kW, with chain belt conveyt and wire stations



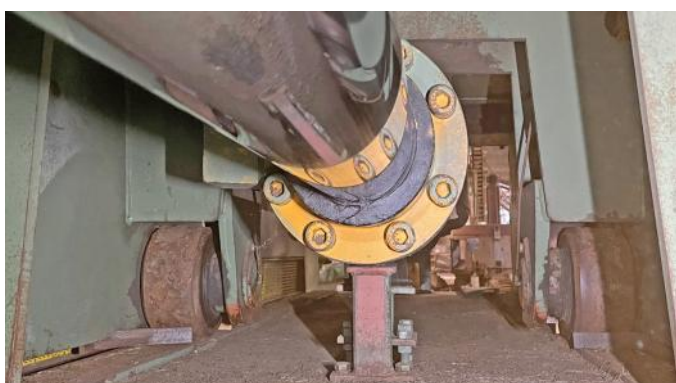
Baler Bollegraaf, type HBC 80 AF, 78 t pressing force, yoc 1994, 51,551 operating hours, drive power 45 kW, with chain belt conveyt and wire stations



Baler Bollegraaf, type HBC 80 AF, 78 t pressing force, yoc 1994, 51,551 operating hours, drive power 45 kW, with chain belt conveyt and wire stations



Baler Bollegraaf, type HBC 80 AF, 78 t pressing force, yoc 1994, 51,551 operating hours, drive power 45 kW, with chain belt conveyt and wire stations



Baler Bollegraaf, type HBC 80 AF, 78 t pressing force, yoc 1994, 51,551 operating hours, drive power 45 kW, with chain belt conveyt and wire stations

