

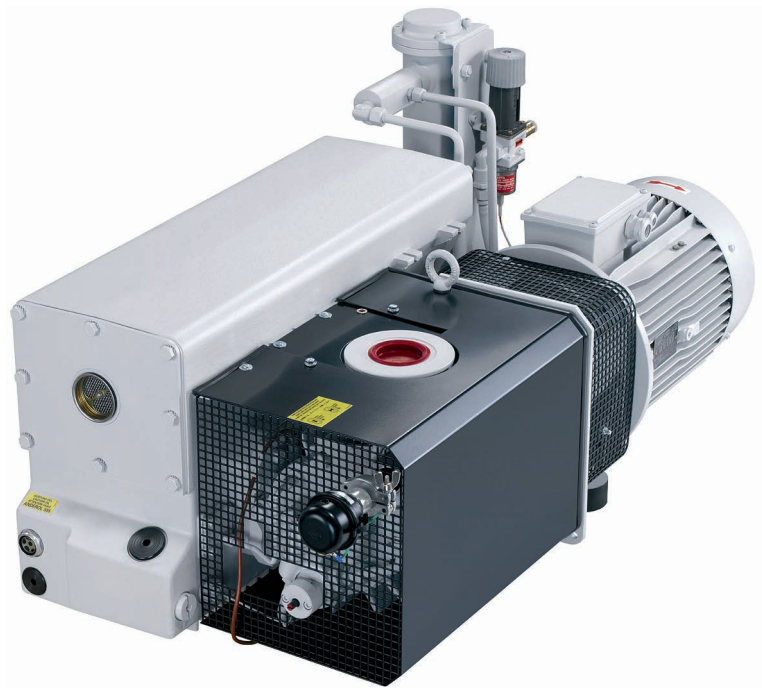
SOGEVAC®

SV 200 BR2

Single-stage, oil-sealed rotary vane pump

**Operating Instructions GA02307_002_C1
and spare parts list**

Part Numbers
10926 / 10927
95526 / 95527
95027
and their variants



Contents

	Page	
0	Important Safety Information	4
0.1	Mechanical Hazards	4
0.2	Electrical Hazards	4
0.3	Thermal Hazards	4
0.4	Hazards Caused by Materials and Substances	4
0.5	Danger of Pump Damage	5
1	Description	6
1.1	Principle of operation	6
1.2	Technical characteristics	8
1.3	Connection Fittings	12
1.4	Ordering informations	13
1.5	Accessories	14
1.6	SV + WAU Combination Direct connected	15
1.7	Spare parts	15
1.8	Lubricants	16
2	Transport and Storing	17
2.1	Transport and packaging	17
2.2	Mounting orientation	17
2.3	Storing	17
3	Installation	18
3.1	Setting up	18
3.2	Conforming use	18
3.3	Connection to system	19
3.4	Electrical connections	21
3.5	Start-up	22
4	Operation	23
4.1	Operation	23
4.2	Switching off / Shutdown	24
4.3	Ultimate Pump Pressure	25
4.4	Installing the Optional Gas Ballast Valve	25
5	Maintenance	26
5.1	Safety Information	26
5.2	Maintenance Intervals	26
5.3	Leybold Service	27
5.4	Maintenance Work	27
6	Troubleshooting	33
7	Spare parts	35
8	Waste Disposal	42
	EC Conformance Declaration	43

Safety Information

Obligation to Provide Information

Before installing and commissioning the pumps, carefully read these Operating Instructions and follow the information so as to ensure optimum and safe working right from the start.

The Leybold SOGEVAC® has been designed for safe and efficient operation when used properly and in accordance with these Operating Instructions. It is the responsibility of the user to carefully read and strictly observe all safety precautions described in this section and throughout the Operating Instructions. The SOGEVAC® must only be operated in the proper condition and under the conditions described in the Operating Instructions. It must be operated and maintained by trained personnel only. Consult local, state, and national agencies regarding specific requirements and regulations. Address any further safety, operation and/or maintenance questions to our nearest office.

DANGER indicates an imminently hazardous situation which, if not avoided, will result in death or serious injury.

WARNING indicates a potentially hazardous situation which, if not avoided, could result in death or serious injury.

CAUTION indicates a potentially hazardous situation which, if not avoided, could result in minor or moderate injury.

NOTICE is used to notify users of installation, operation, programming or maintenance information that is important, but not hazard related.

We reserve the right to modify the design and the specified data. The illustrations are not binding.

Retain the Operating Instructions for further use.

This Manual is valid for standard products. If the delivered pump is a special version, then the pump will be delivered with an additive document which is to be understood as a part of the Instruction Manual.

NOTICE



DANGER



WARNING



CAUTION



NOTICE



Safety Information



0 Important Safety Information

0.1 Mechanical Hazards

- 1 Never expose part of the body to the vacuum. There is a danger of injury. Never operate the pump with an open and thus accessible inlet. Vacuum connections as well as oil filling and oil draining openings must not be opened during operation of the pump.



0.2 Electrical Hazards

- 1 The electrical connection must only be provided by a trained person. Please observe the national regulations in the country of use like EN 50110-1 for Europe, for example.
- 2 Disconnect the unit from the power supply before starting any work.



0.3 Thermal Hazards

- 1 When operating pump is hot and some surfaces could reach a temperature higher than 80°C (176°F). There is a risk of burn by touching.



0.4 Hazards Caused by Materials and Substances

- 1 SOGEVAC® pumps are **not** designed:
 - for pumping of dusty, aggressive, corrosive, flammable or explosive gases or gases mixtures
 - for pumping of oxygen or other highly reactive gases with a greater concentration than atmospheric concentration (>20%)
 - for working in flammable or explosive environment.For all these cases, special materials must be used. In case of doubt, please contact Leybold.

See also the limits of use indicated in the CE declaration of conformity.

- 2 Depending on the process involved, dangerous substances and oil may escape from the pump. Take the necessary safety precautions !
 - 3 Take appropriate precautions to insure that the pump cannot start.
 - 4 If the pump has pumped hazardous gases it will be absolutely necessary to determine the nature of the hazard involved and take the appropriate safety precautions.
 - 5 Observe all safety regulations !
 - 6 Take adequate safety precautions prior to opening the intake or exhaust port.
 - 7 Respect the instructions concerning environment protection when discarding used oil or exhaust filters !
-

0.5 Danger of Pump Damage

- 1 Liquid and solid particles must not enter the pump. Install the adequate filters, separators and/or condensers. In case of doubt consult Leybold.
- 2 The intake line of the pump must never be connected to a device with over atmospheric pressure. Design the exhaust line so that no pressure higher than 1,15 bar abs. (0,15 bar rel.) can occur. Never work with closed or restricted pump exhaust.
- 3 Operating of the pump without oil or operating with incorrect direction of rotation can destroy the pump or lead to oil backstreaming.
- 4 Never use discarded seals. Always assemble using new seals.
- 5 The pump must be packaged in such a way that it will not be damaged during shipping, and so that no harmful substances can escape from the package.

NOTICE



Description

1 Description

SOGEVAC[®] pumps are designed for pumping of inert gases in the range of rough vacuum, between atmospheric pressure and ultimate pressure of the pump.

When removing condensable vapours, a gas ballast valve must be installed.

1.1 Principle of operation

The SOGEVAC[®] pumps SV200 BR2 are single-stage oil-sealed rotary vane vacuum pumps.

The anti-suckback valve, gas ballast valve (optional), exhaust filter, oil return circuit and oil cooling oil are integrated functional elements. The pumps are driven by a directly flanged motor.

The rotor (7/88), mounted eccentrically in the pump cylinder (7/83), has three vanes which divide the pump chamber into several compartments. The volume of each changes periodically with the rotation of the rotor.

As the rotor rotates, the intake portion of the pumping chamber expands and sucks gas thru the intake port. The gas passes through the dirt trap and the open anti-suckback valve (7/54) and enters the pump chamber. As the rotor rotates further, the vane separates part of the pump chamber from the intake port. This part of the pump chamber is reduced, and the gas is compressed. At slightly above atmospheric pressure the gas is expelled from the chamber via the exhaust valve (6/28).

Oil injected into the pump chamber serves to seal, lubricate and cool the pump.

The oil entrained with the compressed gas is coarsely trapped in the oil case (6/27) by deflection. Then fine filtering occurs in the exhaust filter elements (6/29). The proportion of oil in the exhaust gas is thus reduced below the visibility threshold (over 99.9 % entrapment rate).

Oil trapped in the exhaust filters is returned to the inlet chamber via an oil return line (6/11).

To prevent gas flowing at atmospheric pressure from the oil reservoir into the intake port, the oil return line is controlled by a float valve.

The oil cycle is maintained by the pressure difference existing between the oil case (pressure above or equal atmospheric pressure) and the intake port (pressure below atmospheric pressure). One part of the oil is taken from the oil reservoir (6/27) and flows via the oil filter (6/25) to the bearing points of the rotor and to the pump chamber. The other part of oil injected in the pump does not run through the oil filter. So, if the oil filter is accidentally completely clogged, lubrication will be assured through the second circuit with enough quantity of oil to guarantee the good mechanical running of the pump.

However, in that case, the pump will not reach anymore its specific end pressure. That will often indicate that oil is polluted and/or oil filter is clogged.

A fan running on the motor shaft generates the necessary cooling air.

The oil is also fed, thru a cooling coil.

Upon request, water cooled with heat exchanger and thermostatic valve can be delivered. Those pumps are delivered with a dedicated instruction manual added.

Pump can be ordered with gas ballast device, on request (6/14). By opening the gas ballast valve, a controlled amount of air so called "gas ballast" - is admitted into the pump chamber.

This gas ballast prevents condensation (up to the limit of water vapor tolerance specified in the Technical Data) when pumping condensable gases or vapors.

There are different types of gas ballast:

- standard gas ballast < 7 Nm³/h,
- large gas ballast 18 Nm³/h,
- gas ballast with electromagnetical valve 24 VDC, 18 W, 7 Nm³/h.

The operational limits of gas ballast are defined in § 4.1.

On pumps supplied without gas ballast valve, the valve can be retrofitted (see § 1.4 and 4.4).

Unintentional venting of the vacuum chamber as well as oil suckback when shutting down the pump are prevented by the integrated anti-suckback valve (7/54), see also § 4.2.

Description

1.2 Technical characteristics

Pump technical data like e.g. ultimate pressure & noise level are only valid for standard pumps operating with the mentioned mineral oil. The use of other oils may have consequences on these values.

SV200

Technical Data		50 Hz	60 Hz
Nominal speed ¹⁾	m ³ ·h ⁻¹	180	220
Pumping speed ¹⁾	m ³ ·h ⁻¹	170	200
Ultimate partial pressure without gas ballast ¹⁾	mbar	≤ 8·10 ⁻²	≤ 8·10 ⁻²
Ultimate total pressure with gas ballast standard ¹⁾	mbar	≤ 0.7	≤ 0.7
Water vapour tolerance:			
■ with gas ballast standard ¹⁾ or EM	mbar	40	50
■ with big gas ballast	mbar	50	60
Water vapour tolerable load:			
■ with gas ballast standard ¹⁾ or EM	kg·h ⁻¹	3.4	5.4
■ with big gas ballast	kg·h ⁻¹	N/A	N/A
Noise level ²⁾	dB (A)	69	73
Leak rate	mbar·l·s ⁻¹	≤ 1·10 ⁻³	≤ 1·10 ⁻³
Mains voltage (Standard) For other voltages ³⁾	V	230 / 400	460 ⁴⁾
Motor power	kW	4	4,6
Type of protection		IP 55	IP 55 ³⁾
Rated rotational speed	min ⁻¹	1450	1750
Oil capacity (min./max.)	l	5/9	5/9
Intake connection		G2	G2 NPT 2 ³⁾
Exhaust connection		G2	G2 NPT 2 ³⁾

1) to DIN 28400 and following numbers, with standard gas ballast

2) operated at the ultimate pressure without gas ballast, free-field measurement at a distance of 1 m

3) please contact Leybold

4) NEMA: 230 / 460 V

Description

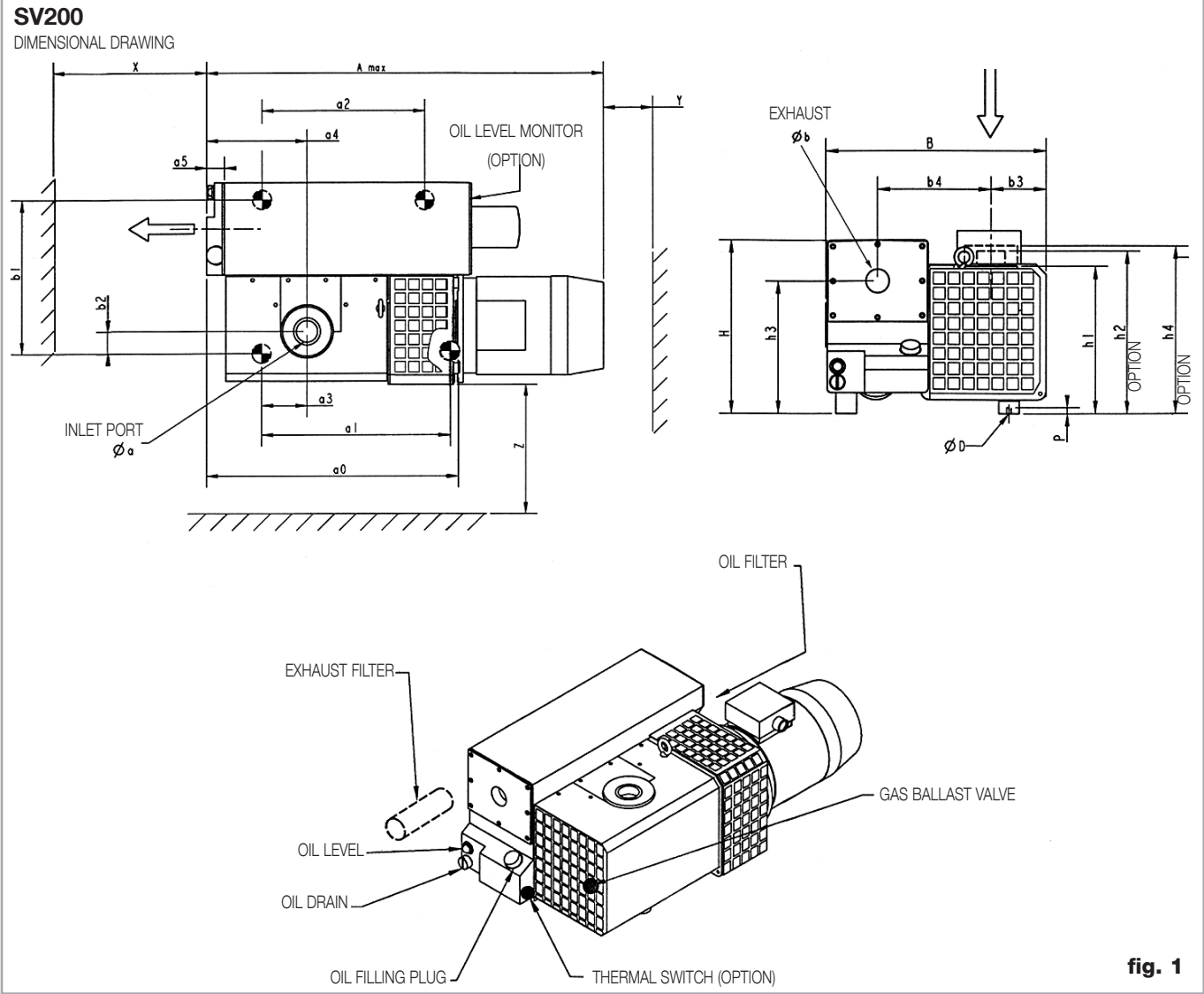


fig. 1

Dimension in mm

Type	Øa	Øb	Amax.	a0	a1	a2	a3	a4	a5	B	b1	b2	b3	b4	ØD/P	H	h1	h2	h3	h4	X	Y	Z	Weight kg
109 26	G2	G2	960	548	390	252	62	214	40	535	394	50	140	269	M10/10	425	352	392	318	399	350	150	300	170
109 27																								
955 27			1000	557																				

US versions

Dimension in inches

Type	Øa	Øb	Amax.	a0	a1	a2	a3	a4	a5	B	b1	b2	b3	b4	ØD/P	H	h1	h2	h3	h4	X	Y	Z	Weight kg
950 27	2"	2"	975	557	390	252	62	214	40	535	394	50	140	269	M10/10	425	352	392	318	399	350	150	300	170
			39"	21"	15"	9"	2"	8"	1"	21"	15"	1"	5"	10"	M10/16"	16"	13"	15"	12"	15"	14"	6"	12"	
			15/16	5/16	59/64	7/16	7/16	9/16	1/16	1/2	31/32	1/2	19/32	25/64	47/64	55/64	7/16	33/64	45/64					

Description

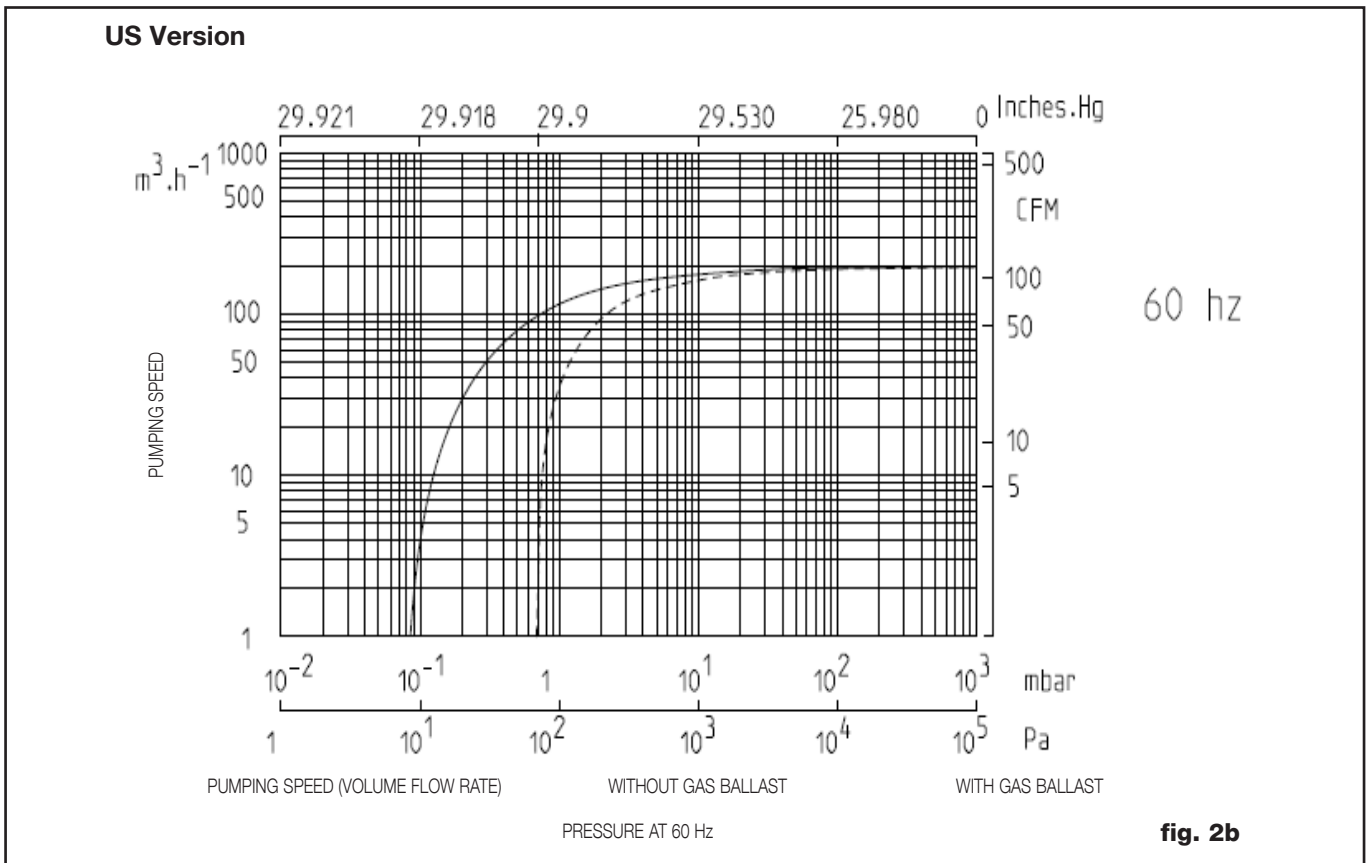
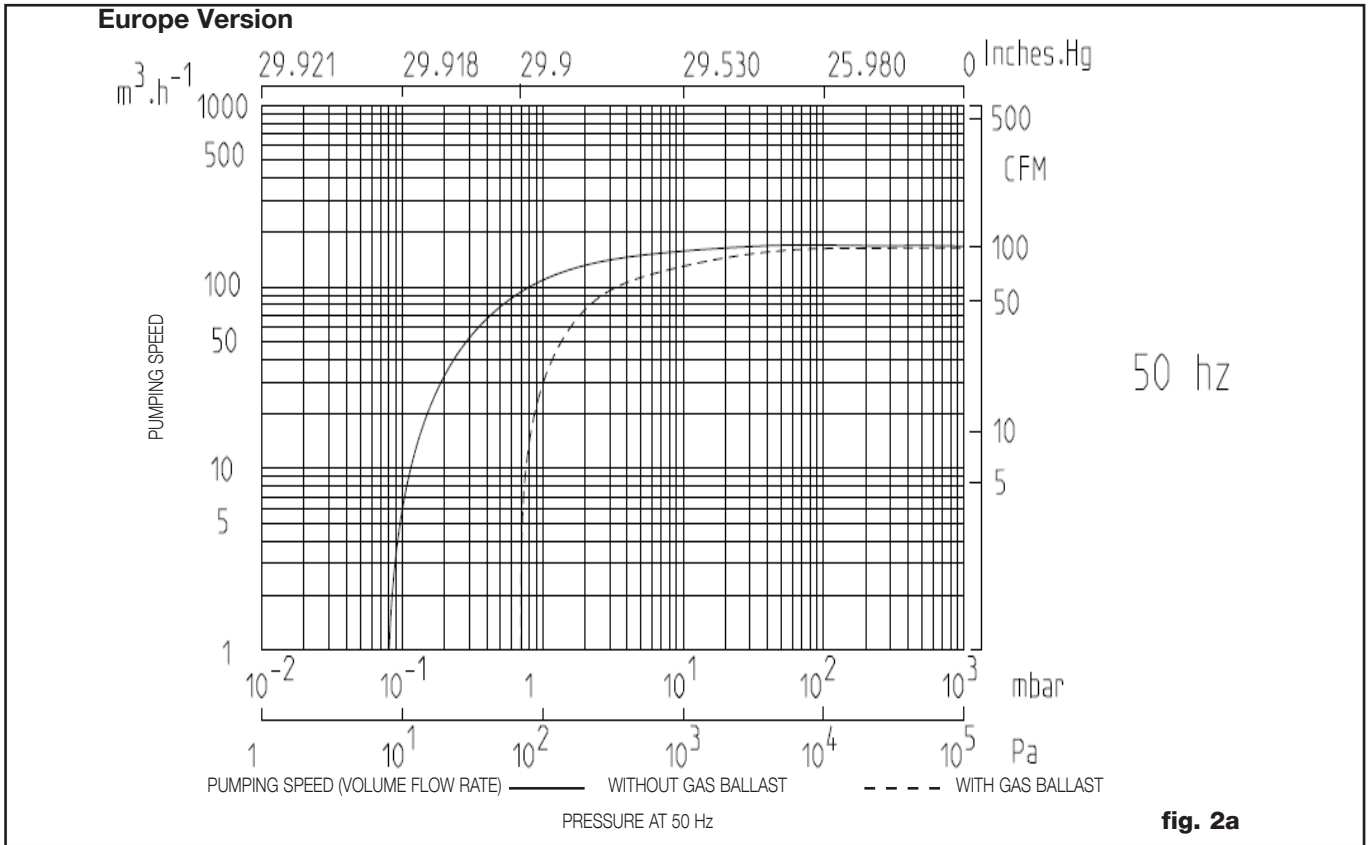
Conversion factors	Different pressure units			Different pumping speed units		
	mbar (millibar)	torr	inches Hg vacuum	$\text{m}^3 \cdot \text{h}^{-1} = \text{m}^3/\text{h}$	$\text{l} \cdot \text{s}^{-1}$	cfm
1 lb = 0.453 kg 1 qt = 0.946 l	1013 400	760 300	0 18.12	$\text{m}^3 \cdot \text{h}^{-1} = \text{m}^3/\text{h}$	1 0.278	0.589
1 hp = 0.735 kW 1 r.p.m. = 1 min^{-1}	133 4	100 3	25.98 29.80	$\text{l} \cdot \text{s}^{-1} = \text{l/s}$	3.60 1	2.12
1 inch = 25.4 mm	1 0.1	0.75 0.75	29.89 29.92	cfm (cubic feet per minute)	1.699 0.472	1
1 atm (atmosphere) = 1013 mbar 1 Pa (pascal) = 0.01 mbar = 10^{-2} mbar 1 bar = 1000 mbar 1 torr = 1.33 mbar				Example: $1 \text{ m}^3 \cdot \text{h}^{-1} = 0.589 \text{ cfm}$ Note: the nominal pumping speed of a pump at 60 Hz is 20 % higher than at 50 Hz		

SV200

Technical Data	60 Hz	
Nominal speed ¹⁾	cfm	130
Pumping speed ¹⁾	cfm	118
Ultimate partial pressure without gas ballast ¹⁾	Torr	$6 \cdot 10^{-2}$
Ultimate total pressure with gas ballast standard ¹⁾	Torr	0.5
Water vapour tolerance with standard gas ballast ¹⁾ or EM	Torr	≤ 30
Motor power	hp	7.5
Rated rotational speed	rpm	1750
Oil filling (min./max.)	qt	5.3/9.5
Weight	lb	342
Inlet flange NPT (F)	inches	NPT 2
Exhaust flange NPT (F)	inches	NPT 2

1) to DIN 28400 and following numbers, with standard gas ballast.

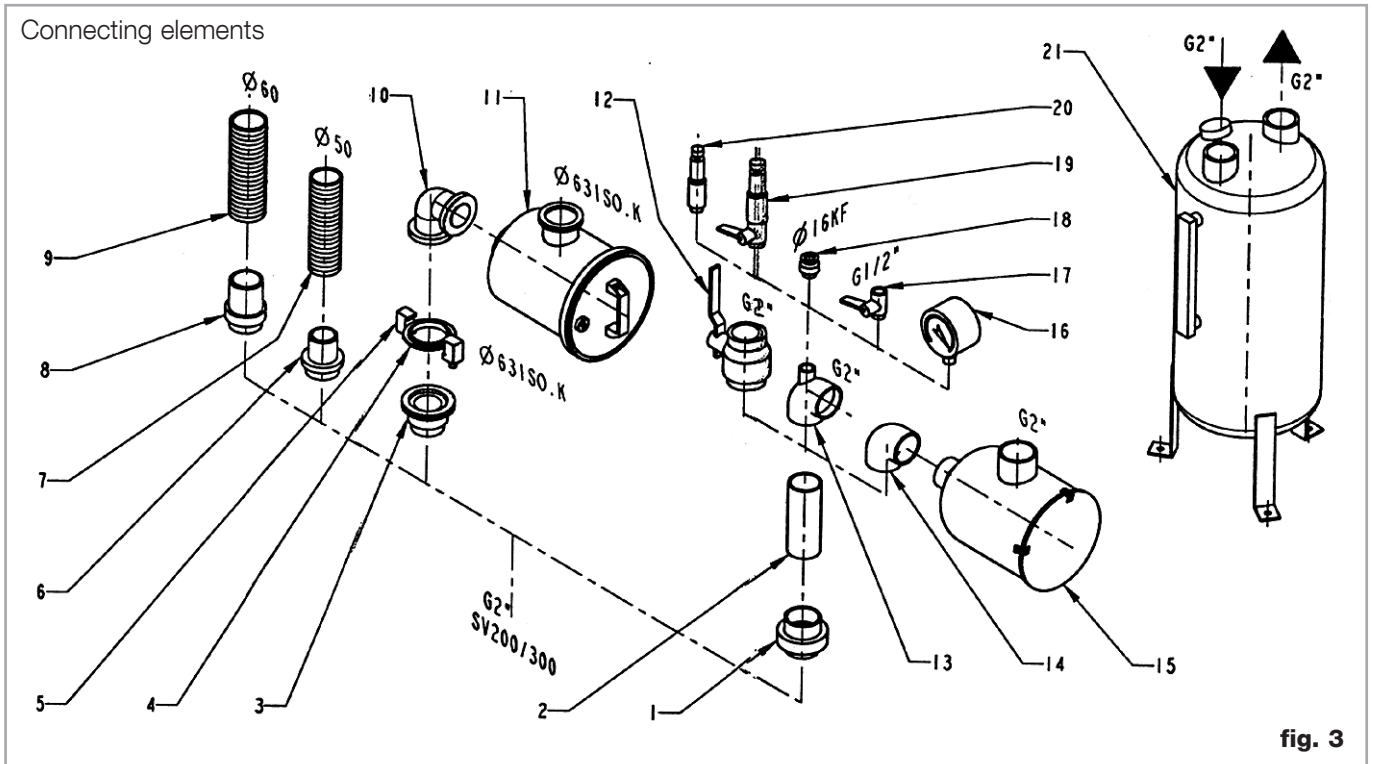
Description



Description

1.3 Connection Fittings

Description	Size SV200	Part No. SV200
1 Union coupling + seal	G2 F/M	711 18 025
2 Nipple	G2 M/M - 150 mm long	711 18 035
3 Threaded flange adapter	G2 M - DN 63 ISO-K NPT2 M - DN 63 ISO-K	711 18 126 721 03 040
4 Centering ring	63 ISO-K AL/NBR	268 07
5 Set of 4 clamps for ISO-K flanges	M10 x 24	267 01
6 Adapter for tubing	G2 DN 50	711 18 015
7 PVC tubing	50 mm, 1 m long	711 18 325
8 Adapter for tubing	G2 DN 60	711 18 016
9 PVC tubing	60 mm, 1 m long	711 18 326
10 Right-angle bend 90°	63 ISO K	887 25
11 Dust filter, paper Dust filter, charcoal Dust filter, metal Inlet filter, polyester	63 ISO K	951 68 711 27 125 711 27 126 711 27 127
12 Ball valve	G2 F/F	711 30 107
13 Tee reducer bush	G2-G2-G1/2 F/F/F	711 18 265
14 Elbow 90°	G2 F/F	711 18 215
15 Dust filter, paper Dust filter, charcoal Dust filter, metal Inlet filter, polyester	G2 M/F	951 65 711 27 122 711 27 123 711 27 124
16 Vacuum gauge	G1/2 M	951 92
17 Ball valve	G1/2 M/F	711 30 113
18 Threaded flange adapter	G1/2 M - DN 16 KF	711 18 120
19 Regulation valve with isolation valve	G1/2 M	951 87
20 Regulation valve	G1/2 M	951 86
21 Condensate Trap	G2 F - G2 F	951 44



1.4 Ordering informations

	Part No. SV200
Pump with three-phase motor without gas ballast 230 V/400 V, 50 Hz 460 V, 60 Hz	109 26
Pump with three-phase motor and integrated gas ballast valve 230 V/400 V, 50 Hz 460 V, 60 Hz	109 27
Pump with three-phase motor without gas ballast 200 V, 50/60 Hz	955 26
Pump with three-phase motor and integrated gas ballast valve 200 V, 50/60 Hz	955 27
US Version US	
Pump with three-phase motor and integrated gas ballast valve 230 / 460 VAC 60 Hz 3-phase (+ 400 V 50 Hz)	950.27

Description

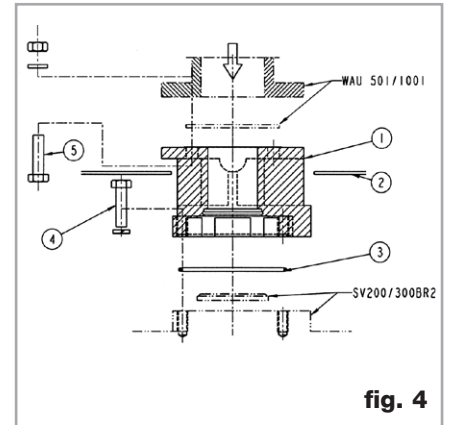
1.5 Accessories

Description	Size	Part No. SV200
Oil sight glass (glass/metal) (Europe version)		712 19 480
Oilfilter by-pass		712 30 570
Oil drain tap	G 3/4	711 30 114
Interchangeability Kit SV 180/280		714 01 930
Gas ballast standard 7 Nm ³ /h		951 29
Gas ballast big flow 18 Nm ³ /h		951 30
Gas ballast standard with EM valve 24 V DC (KIT) 7 Nm ³ /h		951 31
Exhaust filter gauge		951 94
Exhaust filter over-pressure switch		712 22 360
Oil level monitor		953 96
Thermal switch		951 36
Adapter Roots 500		953 90
Adapter Roots 1000		953 91
Base frame		711 19 208
Base frame for possibility for adaptation Roots		711 19 209
Simple water cooling without thermostatic valve		upon request
Separator SEP 63	DN 63 ISO K	953 56
Separator-Condenser SEPC 63	DN 63 ISO K	953 66
Threaded flange adapter	G 2" F - DN 63 ISO K	711 18 113

Stability of pump is insured with accessories of Leybold; mounting of any other accessory will engage the responsibility of user concerning stability of pump.

1.6 SV + WAU Combination Direct connected

Pos	Qty	Designation	SV 200 + WAU 501	+ WAU 1001
	1	Adaptation kit Including:	953 90	953 91
1	1	flange	714 36 401	714 36 401
2	1	intake flange housing	714 36 221	714 36 221
3	1	o-ring	714 36 222 (\varnothing 117.07 x 3.53 FPM)	714 36 222 (\varnothing 117.07 x 3.53 FPM)
4	4	screw	HM10 x 40 Q6.8	HM10 x 40 Q6.8
	4	washer	W10	W10
5	4	screw	M12-35/30J=18 Q 6.8	M16-65/30J=24 Q 6.8
	4	washer	MN12	MN16
	4	nut	H M12	H M16



1.7 Spare parts

Description	Part No. SV 200
Oil filter standard	710 18 850
Metal oil filter	711 19 121
Exhaust filter	710 64 763
Set of seals standard	NBR / FKM 971 97 552
Set of seals	FKM 714 36 730
Repair set	714 36 190
Module kit	714 36 170
Inlet filter element F 200/300	
■ paper	712 13 293
■ metal	712 13 334
■ charcoal	E 712 13 314
■ polyester	712 61 318

Description

1.8 Lubricants

Except differently specified on the pump, we recommend to run the SOGEVAC® pumps with LVO130 from Leybold or an equivalent oil which meets following requirements:

- low vapor pressure, even at high temperatures;
- flat viscosity curve;
- minimum water content and absorption;
- good lubricating properties;
- resistant to aging under mechanical strain.

Pump oil LVO130	Conditioning	Part No.
	2 liters	L13002
	5 liters	L13005
	20 liters	L13020
	208 liters	L13099

Use of other special-grade lubricants for specific applications is possible. Please consult us.

Only use lubricants which have been fully qualified by Leybold.

Transport and Storing

2 Transport and Storing

2.1 Transport and packaging

SOGEVAC® vacuum pumps pass a rigorous operating test in our factory and are packaged to avoid transport damages.

Please check packaging on delivery for transport damages.

Packing materials should be disposed off according to environmental laws or re-cycled.

These operating instructions are part of the consignment.

The connection ports are blanked off by plastic protective caps or self-adhesives. Take these caps or self-adhesives away before turning on the pump.

The pump is supplied with drive motor in ready to use condition ; it is supplied with its oil filled in.

Use only lifting devices appropriated to the pump weight. Check name plate. Do not use other pump elements than the lifting lugs as handles.

2.2 Mounting orientation

See required space on drawings in paragraph 1.2.

Pumps which have been filled with oil must only be moved in the upright position (horizontally). Otherwise oil may escape. The angle of slope may not be over 10° max. Avoid any other orientations while moving the pump.

Only use the lifting lugs which are provided on the pump to lift the pump with the specified lifting devices.

Make sure that these have been installed safely. Use suitable lifting equipment. Make sure that all safety regulations are observed.

Check the pump for the presence of any oil leaks, because there is the danger that someone may slip on the oil which has leaked from the pump.

2.3 Storing

If the pump is to be shut down for an extended period or if the pump has to be stored, proceed as follows:

When pumping harmful substances, take adequate safety precautions.

Drain the oil (see § 5.4-C).

Pour in clean oil up to the bottom edge of the oil-level glass (see § 5.4-C) and let the pump run for a few minutes.

Then drain the oil and pour in clean oil up to the top edge of the oil-level glass (see § 5.4-C).

Seal the connection ports. Special preservation or slushing oils are not necessary.

WARNING



DANGER



Installation

WARNING



3 Installation

It is essential to observe the following instructions step by step to ensure safe start-up. Start-up may only be conducted by trained specialists.

The standard pump is not suitable for installation in explosion hazard ATEX areas. Please contact us, if you are planning such an application. Before installing the pump you must reliably disconnect it from the electrical power supply and prevent the pump from running up inadvertently.

Observe all safety regulations.

3.1 Setting up

The pump can be set up on any flat, horizontal surface. Under the four feet, there are metric threaded holes for securing the pump.

The oil level cannot be read properly if the pump is tilted. Pump risk to run dry and oil level switch may not react correctly.

The SOGEVAC[®] pump can pump gases and vapors, provided that the gas ballast valve is installed and open and the pump has reached its operating temperature.

CAUTION



Pump in function is hot and some surfaces could reach a temperature higher than 80°C (176°F). There is a risk of burn by touching. Take note of warning labels on the pump.

The pump must be kept clean (not dust deposit).

3.2 Conforming use

The SOGEVAC pumps are intended to be used on clean processes, at low inlet pressure.

In normal operation, the SOGEVAC pumps operated typically below 10 mbar inlet pressure or at ultimate pressure with open gas ballast (for pumps having a gas ballast). Continuous duty is possible.

In the below listed abnormal conditions (but not limited to) the pump may stop due to overheating of the power electronics or motor.

- Continuous operation at high inlet pressure
- Restricted, clogged or blocked exhaust filter or exhaust line
- Out of tolerance supply voltage
- Unsuitable, polluted or too old oil
- Too low oil level
- Too high ambient temperature
- Clogged fan hoods or impeded fresh air circulation

3.3 Connection to system

Note the safety information in Section 0.

Inlet connection

The pump has an internally-threaded intake flange. Using suitable connecting elements (see § 1.3), the pump can be connected to the vacuum system.

The cross-section of the intake line should be at least the same as the intake port. If the intake line is too narrow, it reduces the pumping speed. We recommend applying either LOCTITE or TEFLON tape to the screwed unions so that they are vacuum-tight (especially when gases are dangerous).

Pump should be connected to inlet line without any tension. Use flex lines or pipe unions in your inlet and exhaust lines so that they can be easily removed for pump maintenance.

The maximum pressure at the inlet may not exceed atmospheric pressure (about 1013 mbar). Never operate the pump in the presence of over pressures at its intake.

Type of materials used for mounting of canalisations should take care of pumped gases. It is the same for its tightness.

The inlet pipe should be installed with a rising slope towards the pump to avoid condensates flowing into the pump.

If the process gas contains dust, it is absolutely essential to install a dust filter in addition to the dust trap supplied (see § 1.3).

We recommend to install the dust filter horizontally using the T-piece (3/13) or the elbow (3/14). This ensures that when removing the filter no particles fall into the intake port.

When pumping vapors, we recommend installing condensate traps on the intake and exhaust sides (see § 1.3).

When pumping dangerous gases, the inlet line must be tight.

No particles or liquids may enter in the pump.

WARNING



DANGER



Installation

Exhaust Side

The SOGEVAC® pumps have integrated exhaust filters which, even at a high gas throughput, trap the oil mist and guarantee exhaust gas free of oil mist. If the exhaust filters are clogged, pressure relief valves open and the filters are bypassed. As a result, the proportion of oil in the exhaust gas as well as the pump oil consumption rise.

This situation must be resolved by changing the exhaust filters. It is under utiliser's responsibility to assure maintenance on materiel to avoid any trespassment of the limits autorised by regulations.

Check in the individual case whether an exhaust line is necessary and/or prescribed. Volatile substances can pass through the filter. Depending on the process gas, we recommend connecting an exhaust line; this is always necessary when the exhaust gases are dangerous.

Observe the safety precautions that apply to your application and process gases.

The pump's exhaust port also has an internal thread . A hose can be connected via a suitable screwing nipple (see § 1.3).

The cross-section of the exhaust line should be at least the same as the pump's exhaust port. If the exhaust line is too narrow, overpressure may occur in the pump.

Install the exhaust line with a downward slope to prevent condensate from flowing back into the pump. If this is not possible, we strongly recommend installing a condensate trap (see § 1.3). if several pumps are connected to one exhaust line, ensure an adequate cross-section and a non-return valve at the exhaust of each pump.



Never operate the pump with a blocked or restricted exhaust line. Before start-up, ensure that any blinds or similar shut-off devices in the exhaust line on the pressure side are open and that the exhaust line is not obstructed.

The choice of materials for the pipelines must take into account the pumped medium.

When pumping dangerous gases, the exhaust line must be tight.

The maximum exhaust pressure must not exceed 1.15 bar (absolute). Also reliably prevent the occurrence of any blockage in the exhaust line. Exhaust filter, accessories and the tubing must be rated according to the maximum throughput. The maximum throughput is equivalent to the pumping speed of the pump.

Should a forced ventilation extraction be installed, the pressure in the exhaust pipe shall not be lower than atm.pressure minus 50 mbar.

Pump exhaust to be connected if oil mist or process gases are to be avoided in the pump area.

3.4 Electrical connections

Ensure that incoming power to the pump is off before wiring the motor or altering the wiring. Electrical connections must be done by a qualified electrician in accordance with the applicable safety regulations.

DANGER



Wire the motor for the correct supply voltage via connections in the junction box. See the wiring diagram on the motor or in the junction box.

For proper connection, a suitable motor protection switch must be used. Set the switch in accordance with the rating on the motor nameplate.

After connecting the motor and after every time you alter the wiring, check the direction of rotation. Observe the direction arrow on the motor hood. When checking, the intake port should be open. If the direction of rotation is wrong, oil may be ejected out the intake port. The vacuum system may be pressurised.

Don't use the motor fan for checking the rotation direction. The motor fan rotates too fast to determine its direction; when it slows down during shutdown, it changes its direction.

Briefly switch ON the pump, check if you can feel suction at the inlet port, and immediately turn off the pump. When the pump is rotating correctly, you should feel suction at the inlet port.

Turn off the power supply, and interchange two phases of the connection, if you need to correct the direction of rotation.

We recommend checking the direction of rotation with a phase-sequence indicator.

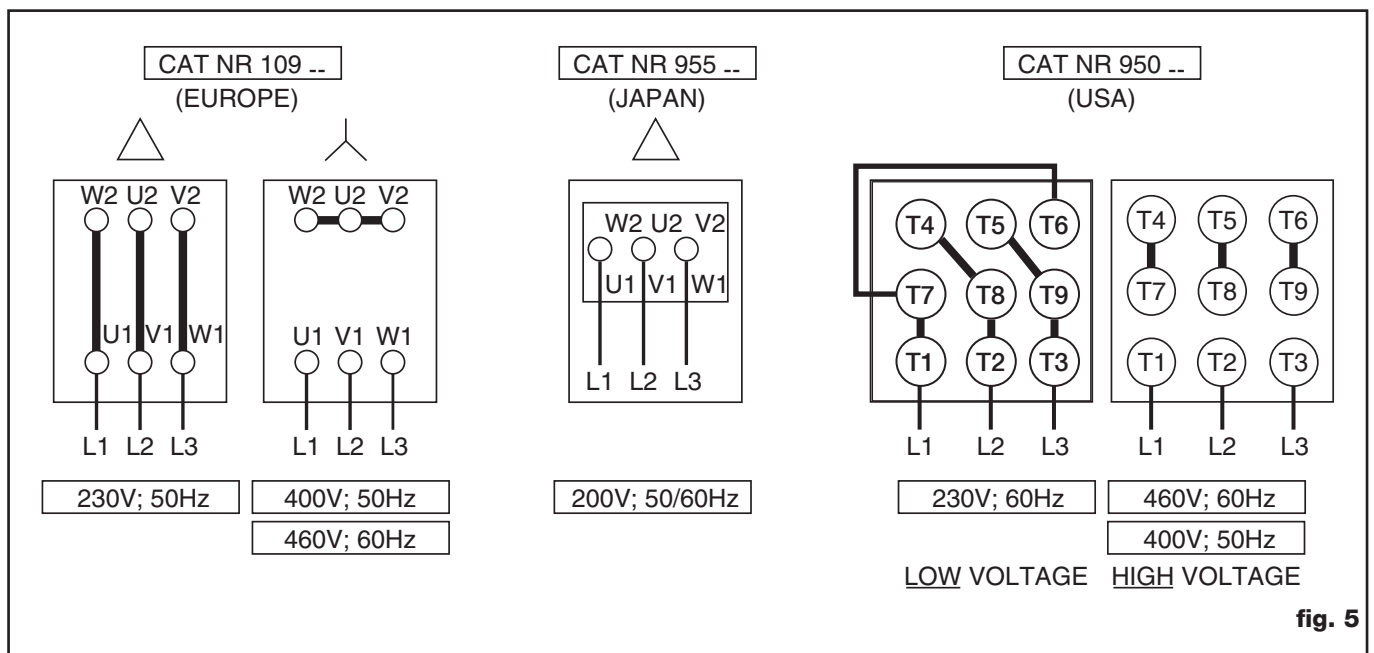


fig. 5

Installation

NOTICE

Prolonged running of the motor in the wrong direction of rotation will damage the pump!

If any security switch or electrical defect cuts out the pump, re-start-up of the pump must only be possible by handaction.

The drive motor must be protected against over loads according to IEC 60204-1 and IEC 61010-1.

Motorization

European versions:

A 50/60 Hz motor is mounted in standard on the SV200

Voltages:

230-400 V \pm 10% at 50 Hz

460 V \pm 10% at 60 Hz

US versions:

A 50/60Hz motor (NEMA) is mounted in standard on the SV200

Voltage:

400 V \pm 10% at 50 Hz

230 V/460 V \pm 10% at 60 Hz

3.5 Start-up

The pumps are supplied with the necessary oil filling in ready-to-use condition. Always verify proper oil level before operating the pump.

The normal oil level is in the middle of sight glass.

If oil has to be added, unscrew the oil-fill plug, add oil and screw the plug firmly back in.

The SOGEVAC[®] pump is designed for normal startup at temperatures over 12°C (54°F) (as per PNEUROP). With adequate oils, cold starts are possible above 0°C (32°F).

CAUTION

Before starting the pump ensure that the attached accessories meet the requirements of your application and that safe operation is ensured.

Never expose part of the body to the vacuum. There is a danger of injury. Never operate the pump with an open and thus accessible inlet. Vacuum connections as well as oil filling and oil draining openings must not be open during operation of the pump.

Do not lay the hand on the intake to check suction. Exposure of a part of the body to the vacuum result in a rush of blood in the exposed part.

4 Operation

4.1 Operation

To avoid overloading the motor, do not start the pump more than six times within one hour.

If frequent starts are needed, the pump should run continuously and be linked to the vacuum vessel by means of a valve. In that case, regulation will be made by the valve and not by start/stop of the pump. With the valve closed, the pump consumes little energy.

The SOGEVAC[®] pump can pump gases and vapors, provided that the gas ballast valve is installed and open and the pump has reached its operating temperature.

The pump in function is hot and some surfaces could reach a temperature higher than 80°C (176°F). There is a risk of burn by touching. Take note of warning labels on the pump.

Use ear protection in case of operation at high inlet pressures.

CAUTION



Pumping of non-condensable gases

If the process contains mainly permanent gases, the SOGEVACs can be operated without gas ballast, provided that the saturation vapor pressure at operating temperature is not exceeded during compression.

If you do not know the composition of the gases to be pumped, and if you can't rule out the possibility of condensation, run the pump with gas ballast valve open in accordance below.

Pumping of condensable gases and vapors - Using gas ballast

The pumps with gas ballast valves are delivered with the gas ballast valve open.

The SOGEVAC[®] SV200 can be equipped with 3 types of gas ballasts.

Standard gas ballast (Cat. No. 951 29) 7 Nm³/h

(originally mounted on Cat. No. 109 27, 950 27, 955 27).

This gas ballast corresponds to the most important part of applications; it authorizes a water vapour tolerance of:

30 mbar at 50 Hz

40 mbar at 60 Hz

Gas ballast "Big Flow" 18 Nm³/h as a variant or accessory (Cat. No. 951 30).

This kit is intended for the applications where more vapours of condensable gases could come into the pump. It brings the water vapour tolerance above 50 mbar. (Mounting instructions attached to the kit).

Standard gasballast with E.M. valve (Cat. No. 951 31).

This kit is intended for being mounted on pumps on which the gas ballast can be driven by an electromagnetic valve applied at 24 VDC 18 W.

With the gas ballast valve open and at operating temperature, the SOGEVAC[®] pump can pump pure water vapor up to the water vapor tolerance indicated in the Technical Data. The pump's water vapor tolerance can be increased by raising the operating temperature.

Use a screwdriver to open the gas ballast valve. The running noise of the pump is slightly louder when the gas ballast valve is open. Before opening the pump to vapors, ensure that the gas ballast valve is open and that the pump has been warmed up for about 30 minutes with closed intake line.

NOTICE



Do not open the pump to condensable vapors until it has warmed to operating temperature (approximately 75 °C); pumping process gas with a cold pump results in vapors condensing in the oil.

For processes with a high proportion of condensable vapors, slowly open the intake line after reaching the operating temperature to prevent excessive quantities of vapor entering the pump.

One sign of condensation of vapors in the pump is a rise in the oil level during operation of the pump.

NOTICE



During pumping, vapors may dissolve in the oil. This changes the oil properties and causes a risk of corrosion in the pump. Therefore, do not switch off the pump immediately after completion of the process. Instead, allow the pump to continue operating with the gas ballast valve open and the intake line closed until the oil is free of condensed vapors. We strongly recommend operating the pump in this mode for about 30 minutes after completion of the process.

In cyclic process operation, the pump should not be switched off during the intervals between the individual working phases, but should continue to run with gas ballast valve open and intake port closed (if possible via a valve). Power consumption is minimal when the pump is operating at ultimate pressure.

Once all vapors have been pumped off from a process (e.g. during drying), the gas ballast valve can be closed to improve the ultimate pressure.

4.2 Switching off / Shutdown

Under normal circumstances, all that you need to do is to switch off the pump.

The intake port of the SOGEVAC[®] pumps contains an anti-suckback valve which closes the intake port when the pump is switched off, thus maintaining the vacuum in the connected apparatus and preventing oil from being sucked back into the apparatus. The valve's functioning is not impaired by gas ballast operation.

Nevertheless, the anti suck-back valve is not a safety valve and operates correctly only if clean and undamaged. A valve must be installed if oil back streaming is to be avoided by all means.

When pumping condensable media, let the pump continue to operate with the gas ballast valve open and the intake line closed before switching off (see § 4.1).

When the pump has been switched off due to over heating, initiated by the motor or its temperature detector, the pump must be cooled down to the ambient temperature, and must only be switched on again manually after having eliminated the cause.

In order to prevent the pump from running up unexpectedly after a mains power failure, the pump must be integrated into the control system in such a way that the pump can only be started by a manually operated switch. This applies equally to emergency cut-off switches.

In case of switching processes in connection with a pump which has warmed up under operation conditions, the pump must then not be directly switched on again.

NOTICE

4.3 Ultimate Pump Pressure

If the system cannot produce the pressures specified in the technical data, measure the ultimate pressure directly at the pump's intake port after disconnecting the pump from the system.

The ultimate pressure of non-condensable gases (partial pressure of air) can only be measured with a compression vacuum gauge or a partial pressure gauge. Precise measurements can only be obtained with calibrated instruments.

Upon initial start-up, after prolonged idle periods or after an oil change, it takes a while until the pump reaches the specified ultimate pressure. The pump has to attain its operating temperature, and the pump oil has to be degassed. We recommend operating the pump initially with the gas ballast valve open.

The ultimate pressure depends on the pump temperature and the pump oil used. The best ultimate pressures can be obtained at a low pump temperature and by using the recommended oil types.

4.4 Installing the Optional Gas Ballast Valve

The SOGEVAC[®] pump SV200 are supplied on request either with or without a gas ballast valve. The valve can also be retrofitted (see § 4.1 for choice of gas ballast).

Remove the fastening screws at the top of the pump cylinder cover (7/51a-52a), loosen the pump foot at the bottom of the cover (7/94) and take off the cover.

Drain the oil (see 5.4.C).

Remove the screw (6/13) with gasket.

Install the chosen gas ballast valve (6/14) with its banjo bolt and gasket.

Reinstall the cover and fill in oil.

Maintenance

5 Maintenance

5.1 Safety Information

Depending on the process involved dangerous substances may escape from the pump and oil. Take the appropriate precautions.

Observe the safety regulations.

When disposing of used oil please observe the relevant environmental regulations !

All work must be done by suitably trained personnel. Maintenance or repairs carried out incorrectly will affect the life and performance of the pump and may cause problems when filing warranty claims.

Never mount used seals ; always mount new seals.

DANGER



CAUTION



NOTICE



5.2 Maintenance Intervals

The intervals stated in the maintenance schedule are approximate values for normal pump operation. Unfavourable ambient conditions and/or aggressive media may significantly reduce the maintenance intervals.

Maintenance job	Frequency	Section
Check the oil level	daily	A
Check the oil condition	Depends on process	B
1st oil change	After 150 h of operation	C
Subsequent oil changes	Every 2000 h of operation or 6 months (depending on application)	C
Replace the oil filter	At each oil change	C
Replace the exhaust filter	If oil mist at exhaust or annually	D
Clean the ballast	monthly	E
Clean the dirt trap	monthly	F
Check the anti-suckback valve	annually	G
Checking the float valve	At each exhaust filter change or annually	H
Replacing the exhaust valve	upon need	I
Replacing the Pump Module	upon need	J
Disassembling and Reassembling the Pump Module	upon need	K
Disassembly of electrical motor	upon need	L
Cooling coil cleaning	annually	M

To simplify the maintenance work we recommend combining several jobs.

5.3 Leybold Service

Whenever you send us in equipment, indicate whether the equipment is contaminated or is free of substances which could pose a health hazard. If it is contaminated, specify exactly which substances are involved. You must use the form we have prepared for this purpose.

A copy of the form has been reproduced at the end of these Operating Instructions: "Declaration of Contamination for Compressors, Vacuum Pumps and Components". Another suitable form is available from www.leybold.com → Downloads → Download Documents.

Attach the form to the equipment or enclose it with the equipment.

This statement detailing the type of contamination is required to satisfy legal requirements and for the protection of our employees.

We must return to the sender any equipment which is not accompanied by a contamination statement.

The pump must be packaged in such a way that it will not be damaged during shipping, and so that no harmful substances can escape from the package.

When disposing of used oil, please observe the relevant environmental regulations.

5.4 Maintenance Work

For all maintenance works, use only genuine Leybold parts !

If non genuine Leybold parts are used during warranty period, we reserve the right to reject any claim.

Checking the oil

A. Oil level

The pump oil level during operation must always be between the middle and top edge of the oil-level glass (6/4).

When necessary, switch off the pump and add the correct quantity of oil. Overfilling leads to oil losses at high intake pressures.

High oil consumption often indicates that exhaust filters are clogged.

Stop the pump for filling oil.

The oil level should be checked at least once a day.

B. Oil Condition

Normally the oil is clear and transparent. If the oil darkens, it should be changed.

If gases or liquids dissolved in the oil result in deterioration of the ultimate pressure, oil can be degassed by allowing the pump to run for about 30 min. with the intake port closed and the gas ballast valve open.

The amount of oil required for an oil check should be drained via the oil-drain

Contamination

Form

CAUTION



Maintenance

lug (6/5) into a beaker or similar container with the pump switched off but still at operating temperature.

C. Oil Change, Replacing the Oil Filter

Tool required: oil filter key (710 73 532)

Always change the oil when the pump is switched off but still at working temperature.

If there is a risk of the oil being polymerized by the connected process, change the oil immediately after operation of the pump.

CAUTION



Pump in function is hot and some surfaces could reach a temperature higher than 80 °C (176 °F). There is a risk of burn by touching.

Unscrew the oil-drain plug (6/5) and let the used oil drain into a suitable container.

When the flow of oil slows down, screw the oil drain plug back in, briefly switch on the pump (max. 10s) and switch it off.

Remove the oil drain plug again and drain the remaining oil.

Unscrew the oil filter. Take a new oil filter, moisten its gasket with oil and screw it in manually.

Refasten the oil-drain plug (check the O-ring, replace if required).

Unscrew the oil-fill plug and fill in fresh oil and refasten the oil fill plug.

The pump should be flushed if there is considerable pollution. To flush the pump, fill clean oil up to the bottom edge of the oil-level glass, run it for a short time and then change the oil again.

Use suitable oil only (see point 1.8).

D. Replacing the Exhaust Filters and Checking the Pressure Relief Valve

When the exhaust filter elements are clogged, the valves open and the filters are bypassed. Oil mist at the exhaust, and/or high oil consumption are signs that the exhaust filters are clogged.

The exhaust filters must be replaced more frequently if subject to increased oil cracking products at high operating temperatures and/or aggressive media.

Remove the exhaust flange (6/2) with gasket (6/3). Unscrew the lock nut (6/31) and remove spring between its both washers: take out the exhaust filter element(s) (6/29).

Take out the pressure relief valves and check that they move freely, and seal properly.

Reassemble in the reverse sequence. Ensure that the exhaust filter elements are properly centered and positioned. Install spring between its both washers, and tighten stop nut (6/31), fully home with the 10 mm box wrench.

E. Cleaning the Gas Ballast Intake Filter

Tools required: Open-jaw or box wrenches 10 mm, 17 mm.

Remove the fastening screws at the top of the pump-cylinder cover (7/51a-52a), loosen the pump foot (7/94a) at the bottom of the cover and take off the cover.

Release the clips on the gas ballast filter.

Clean the filter using a suitable solvent. Then dry it. Reassemble in the reverse sequence.

F. Cleaning the Dirt Trap

Tools required: open-jaw or box wrenches 10 mm, 17 mm.

A dirt trap for coarse particles is located in the intake flange of the pump (7/57). It should be kept clean to avoid reduction of the pumping speed.

The dirt trap consists of two wire-mesh screens. The outer one is accessible by removing the intake line. If it is only slightly dirty, just wipe off the screen from the outside. If it is very dirty, disassemble the intake flange.

To do so, remove the fastening screws at the top of the pump-cylinder cover (7/51a-52a), loosen the pump foot (7/94a) at the bottom of the cover and take off the cover.

Remove four screws and take off the intake flange (7/57) and gasket (7/55).

Remove the retaining ring from inside the intake flange (7/57). Take out both wire-mesh screens and clean them using a suitable solvent.

Reassemble in the reverse sequence. We recommend replacing the gasket (7/55) with a new one.

G. Checking the Anti-Suckback Valve

Tools required: open-jaw or box wrenches 10 mm, 17 mm.

Keep the anti-suckback valve clean to ensure proper operation of the pump. If the pump is exposed to large amounts of dust or dirt, we strongly recommend installing a dust filter upstream.

First disconnect the intake line.

Then remove the fastening screws at the top of the pump-cylinder cover (7/51a-52a), loosen the pump foot (7/94a) at the bottom of the cover and take off the cover.

Remove four screws and take off the intake flange (7/57) and gasket (7/55).

Remove the spring and anti-suckback valve, and replace them if required.

If the anti-suckback valve closes too soon, carefully compress the spring slightly. The top edge of the valve should be about 1-2 mm away from the bottom side of the intake port.

Reassemble the spring with the correct orientation: small diameter to the top. Do not screw the spring into the generator suction hole !

Reassemble the intake port. We recommend replacing the gasket (7/55) with a new one.

Maintenance

The plane side of the anti-suckback valve faces downward.

H. Checking the Float Valve

Tools required: Open-jaw or box wrenches 10 mm, 13 mm, 17 mm.

If the pressure does not fall below approx. 5 mbar during pump operation, check the tightness of the float valve and return line.

Remove the fastening screws at the top the of the pump-cylinder cover (7/51a-52a), loosen the pump foot (7/94a) at the bottom of the cover and take off the cover.

Take off the oil return line (6/11).

Remove the four screws (6/12) and pull the float valve assembly (6/10a) out of the float chamber. Take off the gasket (6/9).

Clean the nozzle. Check the tightness of the float valve.

Check all gaskets and replace them with new ones if necessary.

Reassemble the float valve in the reverse sequence.

I. Replacing the Exhaust Valve

Tools required: Open-jaw or box wrenches 10 mm, 17 mm.

Drain the oil (6/5).

Remove the fastening screws at the top of the pump-cylinder cover (7/51a-52a), loosen the pump foot (7/94) at the bottom of the cover and take off the cover.

Disconnect the oil lines (6/11, 6/15 and 6/18).

Unscrew the nuts (6/19) and pull off the exhaust box.

Remove the gasket (6/22). Remove the screws and take off the valve stop (6/21) and exhaust valve (6/20).

Reassemble in the reverse sequence.

Position the exhaust valve, so that its fingers bend toward the pumping module.

J. Replacing the Pump Module

Fully assembled pump modules are available under Ref. Nos.:

SV200: 714 36 770

Tools required: SV200

open-jaw or box wrenches 10 mm, 17 mm, 27 mm.

We recommend using a new module/oil casing flat gasket and new flat gaskets for the oil flow tubes and gas ballast valve.

Drain the oil.

Remove the pump-cylinder cover, oil lines, oil case and exhaust valve (see point I).

Take off the intake flange, anti-suckback valve (see point G) and spring. Remove the gas ballast valve (6/14).

Loosen the screws and pull the pump module (7/96).

Take off the coupling element (7/60). Loosen the screw and pull off the coupling (7/59).

Remove the key (7/86).

Install the new or the repaired pump module in the reverse sequence.

Adjust the coupling on the motor shaft so that there is a gap between the motor-side of the radial bladed fan and the inside wall of the coupling housing. Then adjust the pump coupling so that there is a gap between the coupling halves. The correct gaps are listed below:

- Gap between Fan & coupling housing: 3 mm
- Gap between coupling halves: 3 mm

Secure the coupling setscrews with Loctite.

K. Disassembling and Reassembling the Pump Module

Remove the pump module (see point I).

Remove the screws with washers and take off the rear end plate (7/89) and front end plate (7/80) with O-rings (7/81). Take out the centering pins.

Pull the rotor (7/88) with vanes (7/87) out of the pump module (7.83).

Pull the vanes out of the rotor.

Take the radial shaft seal (7/79) out of the front end plate.

Reassemble the pump module in the reverse sequence.

Make sure that the vanes are correctly positioned.

To reassemble the pump module, place the exhaust box on its side and put the pump module on the exhaust box, with its exhaust downward.

In case of necessity to replace bearing plates, it will be necessary to adjust locating pins. Please call Leybold (operating instructions on request).

Maintenance

L. Disassembly of electrical motor

Disconnect the power before disassembling the pump. Make absolutely sure that the pump cannot be accidentally started.

Disassemble subassembly (7/61, 64, 66, 67) from pumping module, by unscrewing the 3 securing screws (7/91a).

Loosen the screw, positioning and securing the fan turbine on motor shaft end.

With the help of an extractor puller, take off the fan turbine from motor shaft end.

On the SV200 (Non USA), take off, in motor shaft end fitted M10 screw, so as the LN12 washer and circlips.

To disassemble motor from coupling housing, unscrew the 4 hexagonal head screws (7/68a).

The reassembly is carried out in the reverse sequence, by taking care that the gaps mentioned under I are respected.

Check direction of rotation.

M. Cooling coil cleaning

Please keep the oil cooler (7/66) clean to have an efficient cooling. For that, clean it with compressed air and then degrease it.

Troubleshooting

6 Troubleshooting

Fault	Possible cause	Remedy	Reference section *
Pump does not start.	Pump is connected incorrectly.	Connect the pump correctly.	3.3
	Motor protection switch incorrectly set.	Set motor protection switch properly.	3.3
	Operating voltage does not match motor.	Replace the motor.	
	Motor is malfunctioning.	Replace the motor.	
	Oil temperature is below 12 °C (54 °F).	Heat the pump and pump oil or use different oil.	1.8
	Oil is too viscous.	Use appropriate oil grade.	5.4-B
	Exhaust filter / exhaust line is clogged.	Replace the filter or clean the exhaust line.	5.4-D
Pump does not reach ultimate pressure.	Pump is seized up. (Sign: pump is jammed).	Repair the pump.	5.4-J/5.4-K
	Measuring technique or gauge is unsuitable.	Use correct measuring technique and gauge.	4.3
	External leak ¹⁾ .	Repair the pump.	
	Float valve does not close.	Repair the valve.	5.4-H
	Anti-suckback valve is malfunctioning.	Repair the valve.	5.4-G
	Exhaust valve is malfunctioning.	Repair the valve.	5.4-I
	Inadequate lubrication due to:		
	■ unsuitable or contaminated oil,	Change the oil (degas it, if necessary).	5.4-C
	■ clogged oil filter,	Replace the oil filter.	5.4-C
	■ clogged oil lines.	Clean the oil casing.	
	Vacuum lines are dirty.	Clean vacuum lines.	
Pump is too small.	Check the process date; replace the pump, if necessary.		
Pumping speed is too low.	Dirt trap in the intake port is clogged.	Clean the dirt trap; Precaution: install a dust filter in intake line.	5.4-F/1.4
	Exhaust filter is clogged.	Install new filter elements.	5.4-D
	Connecting lines are too narrow or too long.	Use adequately wide and short connecting lines.	3.1
	Anti-suckback valve is hard to open.	Check spring free length.	
After switching off pump under vacuum, pressure in system rises too fast.	System has a leak.	Check the system.	
	Anti-suckback is malfunctioning.	Repair the valve.	5.4-G
Pump gets too hot.	Cooling air supply is obstructed.	Set pump up correctly.	3.1
	Cooler is dirty.	Clean the cooler.	
	Ambient temperature is too high.	Set pump up correctly.	3.1
	Process gas is too hot.	Change the process.	
	Oil level is too low.	Add oil to reach the correct oil level.	5.4-A
	Oil is unsuitable.	Change the oil.	5.4-C
	Oil cycle is obstructed.	Clean or repair the oil lines.	
	Exhaust filter / exhaust line is obstructed.	Replace the exhaust filter, clean the exhaust line.	5.4-D
	Exhaust valve is malfunctioning.	Repair the valve.	5.4-I
Pump module is no longer usable.	Replace the pump module	5.4-J.	

Troubleshooting

Fault	Possible cause	Remedy	Reference section *	
Oil in intake line or in vacuum vessel.	Oil comes from the vacuum system.	Check the vacuum system.		
	Anti-suckback valve is obstructed.	Clean or repair the valve.	5.4-G	
	Sealing surfaces of anti-suckback valve are damaged or dirty.	Clean or repair the intake port and valve.	5.4-G	
Pump's oil consumption too high, oil mist at exhaust.	Oil level is too high.	Drain the excess oil.	5.4-B	
	Exhaust filters are clogged or damaged.	Replace the filters.	5.4-C	
	Nozzle of float valve is clogged.	Check the valve, clean the nozzle.	5.4-I	
Oil is turbid.	Condensation.	Oil level is too high.	Drain the excess oil.	5.4-B
		Degas the oil or change the oil and clean the pump.	Precaution: open the gas ballast valve or insert a condensate trap.	4.1/5.4-B
Pump is excessively noisy.	Coupling elements worn	Clean the gas ballast intake filter.	5.4-G	
		Oil level is very low (oil is no longer visible).	Add oil.	5.4-B
		Oil filter is clogged.	Change the oil and filter.	5.4-B
		Large vacuum leak in system.	Install new coupling element	5.4-J
		Repair vacuum leak.	5.4-J/K	

* Reference section: This column refers to the section in the Operating Instructions that contains the applicable repair information.

1) Bubble test: Let the pump run at operating temperature with degassed oil, without gas ballast and with closed intake port. Immerse the exhaust line in a bucket of water. If a steady stream of bubbles appear, the pump has an external leak.

NB: For any other operation as described before, return the pump to a Leybold service center.

Never mount used seals. Always mount new seals.

7 Spare parts

To guarantee safe operation of the Leybold vacuum pump, only original spare parts and accessories should be used. When ordering spare parts and accessories, always state pump type and serial number. You can find part numbers in the spare parts list.

Consumables and main spare parts kits for SOGEVAC® pumps are usually available on stock at Leybold's service centers. The list of these parts is given here after and in the spare parts table where the contents of each kits is detailed.

- Oil filter (on some models)
- Exhaust demisters
- Oil (Special oils please refer to the specific notice of the pump or contact Leybold)
- Service kit
- Set of seals
- Repair kit
- Vacuum generator without GB
- Vacuum generator with GB

We recommend to use these kits which have been defined to allow an optimal maintenance or repair. Individual spare parts may need longer delivery time.

Spare parts

SV200

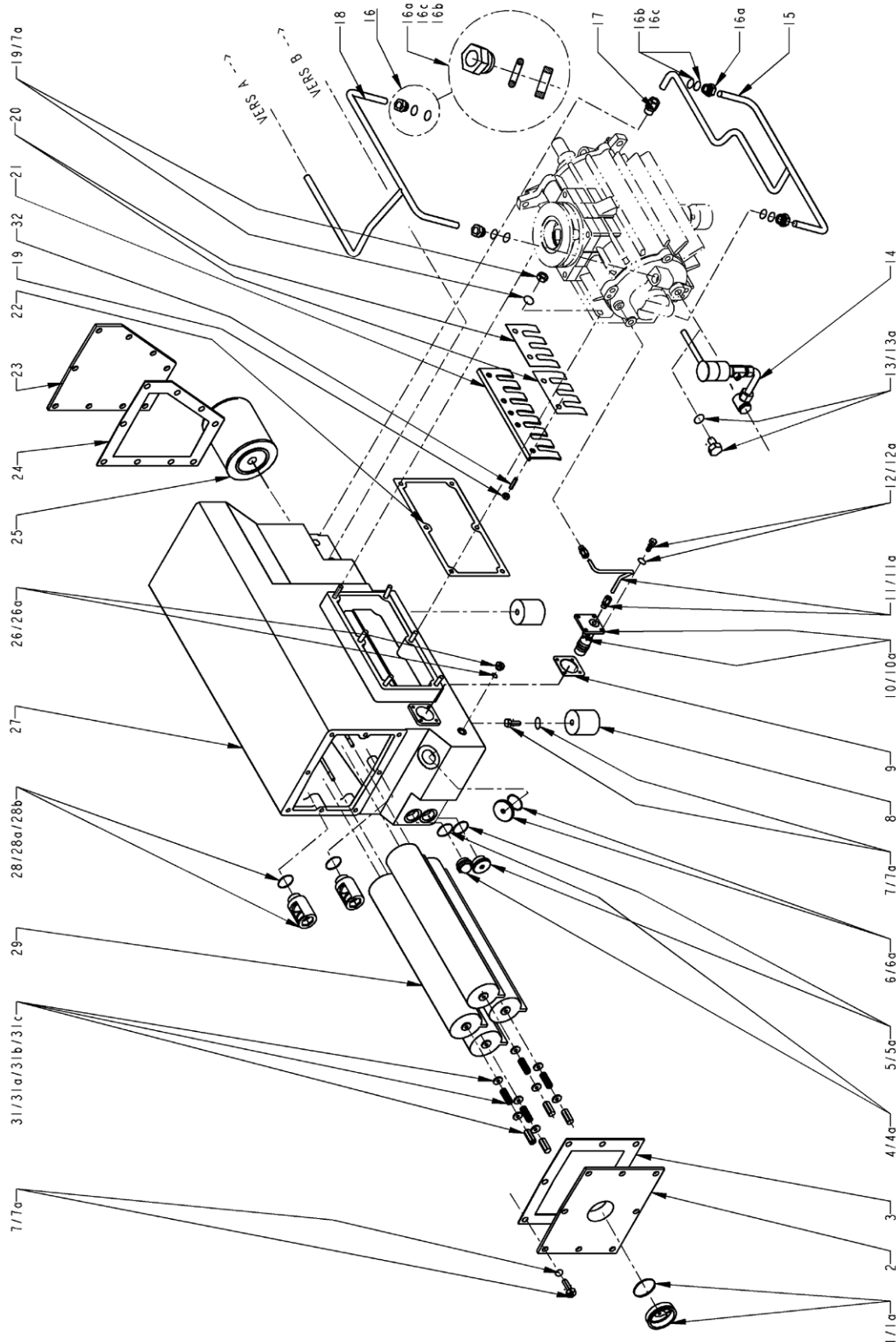


fig. 6

Spare parts

Pos.	Quantity	Specification	Dimensions (mm)	Ref. No.	Ref. No. (USA)	Notes	714 36 730	714 36 170	714 36 190
SV200									
1	1	Exhaust plug				incl. 1a			
1a	1	Gasket	NBR				■		
2	1	Exhaust-Flange		710 60 844	710 60 854				
3	1	Flat gasket	FKM (a)				■		
4	1	Oil level glass				incl. 4a			
4a	1	Flat gasket							■
5	1	Oil drain screw				incl. 5a			
5a	1	O-Ring	FKM (a)				■		
6	1	Oil filling plug				incl. 6a			
6a	1	O-Ring	FKM (a)				■		
7	19	Screw							
7a	21	Washer							
8	1	Rubber mount set		712 59 410	ID.	incl. 78, 92			
9	1	Flat gasket					■		
10	1	Flange float				incl. 10a			■
10a	1	Oil return valve seal	FKM				■		
11	1	Oil return tube		714 00 650	ID.				
11a	2	Connection element		714 00 900	ID.				
12	4	Screw							
12a	4	Washer							
13	1	Plug							
13a	1	Flat gasket					■		
14	1	Gas ballast valve		951 29	ID.				
15	1	Oil tube		714 01 200	ID.				
16a	4	Fitting DN12	M20 x 150	9 714 66 220		ID.			
16b	4	Olive DN12							
16c	4	Male screw							
17	1	Connection element		714 01 430	ID.				
18	1	Oil tube		714 01 210	ID.				
19	4	Nut	M10						
20	1	Valve				6 fingers			■
21	1	Valve stop							■
22	1	Flat gasket					■		
23	1	Cover		714 00 611	ID.				
24	1	Flat gasket					■		
25	1	Oil filter		710 18 850	ID.			■	■
26	1	Plug				incl. 26			
26a	1	O-Ring	FKM			incl. 4, 17, 62			
27	1	Oil casing		714 36 670	ID.				
28	2	Pressure valve		710 17 930	ID.		■		
28a	2	Relief valve seal	FKM				■		
28b	2	O-Ring	NBR				■		
29	4	Exhaust filter		710 64 763	ID.			■	■
31	4	Spring unit			D.	incl. 31a, b, c			
31a	4	Washer							
31b	4	Spring							■
31c	4	Nut							

(a) Seal's material delivered as spare part

Spare parts

SV200

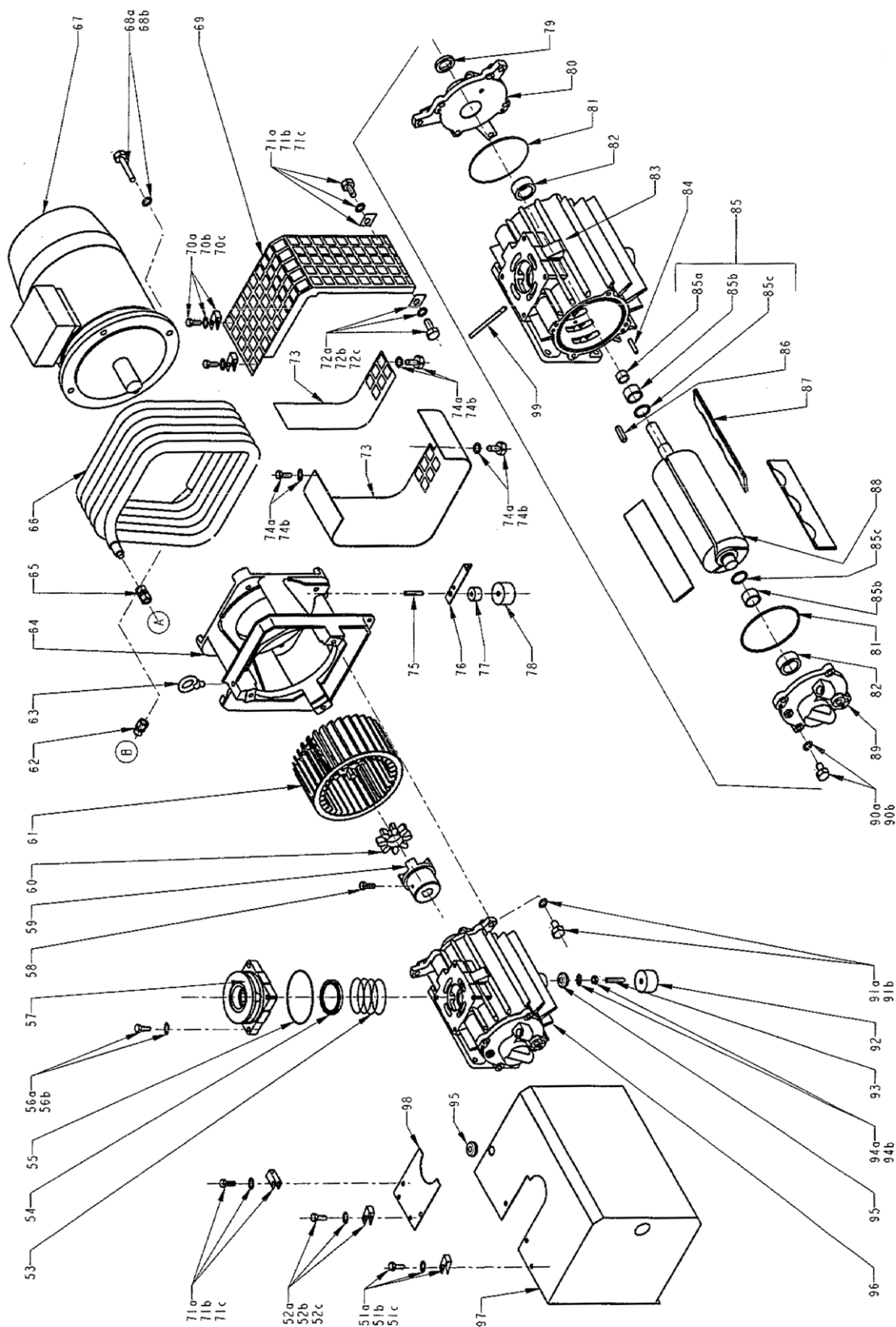


fig. 7

Spare parts

Item	Qty	Description	Dimensions	Part number	Note	714 36 730	714 36 170	714 36 190
51a	3	Screw						
51b	3	Washer						
51c	3	Nut						
52a	2	Screw						
52b	2	Washer						
52c	2	Nut						
53	1	Spring						■
54	1	Intake valve				■		
55	1	O-ring				■		
56a	4	Screw						
56b	4	Washer						
57	1	Intake flange	G2"	71436750				
57	1	Intake flange	NPT2" (USA)	71436760				
58	2	Screw						
59	1	Half coupling		EK71400771			■	■
60	1	Toothed ring						
61	1	Turbine		71076175	Widerange			
61	1	Turbine		71216170	NEMA (USA)			
62	1	Connection element						
63	1	Lifting lug						
64	1	Coupling housing		71400541	Widerange			
64	1	Coupling housing		71400931	NEMA (USA)			
65	1	Connection element						
66	1	Oil cooler						
67	1	Motor	4,5kW 200V 220/380V 230/400V 240/415V 50Hz	EK6519349	Widerange (IE3)			
			5.5kW 200V 220/380V 230/400V 440V 460V 60Hz					
67	1	Motor	7,5 HP 208-230-460V 60Hz	71216228	NEMA (USA)			
68a	4	Screw						
68b	4	Washer						
69	1	Turbine housing		71401631				
70a	2	Screw						
70b	2	Washer						
70c	2	Nut						
71a	1	Screw						
71b	1	Washer						
71c	1	Nut						
72a	1	Screw						
72b	1	Washer						
72c	1	Nut						
73	1	Turbine housing		71407020				
74a	1	Screw						
74b	1	Washer						
75	1	Threaded pin						
76	1	Support						
77	1	Spacer						
78	1	Rubber mount		71259410	incl. 8,92			
79	1	Radial shaft seal				■		
80	1	Rear bearing flange		71401360	(b)			
81	2	O-ring				■		
82	2	Needle bearing (outer)						■

(b) In case of replacement of these parts, new adjustment with locating pins is required (instructions delivered with the parts)

Spare parts

SV200

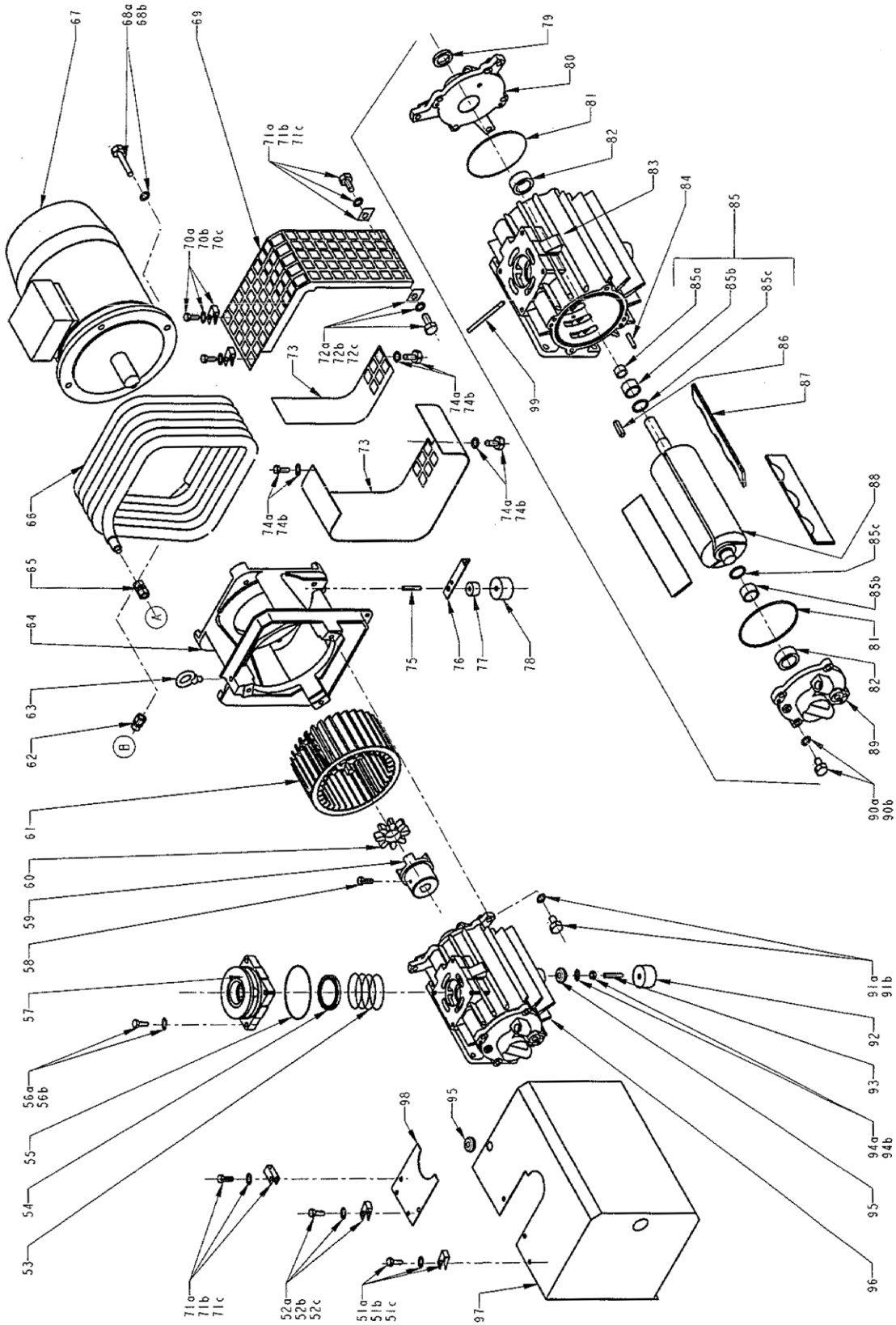


fig. 7

Spare parts

Pos.	Quantity	Specification	Dimensions (mm)	Ref. No.	Ref. No. (USA)	Notes	714 36 730	714 36 170	714 36 190
SV200			Material						
83	1	Pump cylinder		714 36 580	ID.	(b)			
84	4	Centering pin A-8-60				(b)			
85	1	Set of rotor rings				incl. 85a, b, c		■	■
85a	1	Shaft seal ring							
85b	2	Inner race bushing							
85c	2	Washer							
86	1	Key							
87	1	Vane (set of 3)		714 12 000	ID.			■	■
88	1	Rotor with rings		714 00 990		(b)			
89	1	Front end plate		714 01 350		(b)			
90a	8	Screw							
90b	8	Washer							
91a	3	Screw							
91b	3	Washer							
92	1	Rubber mounted		712 59 410	ID.	incl. 8, 78			
93	1	Theaded pin							
94a	1	Nut							
94b	1	Washer							
95	1	Washer							
96	1	Vacuum generator		714 36 770	ID.	incl. 20, 21, 79 à 90			
97	1	Pump housing		714 36 621	ID.				
98	1	Intake flange housing		714 36 641	ID.				
1	1	Set of seals FKM		714 36 730	ID.		▲	■	■
1	1	Module kit		714 36 170				▲	
1	1	Repair set		714 36 190					▲
1	1	Set of covers screw		9 714 56 480	ID.	incl. 51a, b, c incl. 52a, b, c incl. 70a, b, c incl. 71a, b, c			

(b) In case of replacement of these parts, new adjustment with locating pins is required (instructions delivered with the parts)

Disposal

Contamination

WARNING



8 Waste Disposal

The equipment may have been contaminated by the process or by environmental influences. In this case the equipment must be decontaminated in accordance with the relevant regulations. We offer this service at fixed prices. Further details are available on request.

Contaminated parts can be detrimental to health and environment. Before beginning with any work, first find out whether any parts are contaminated. Adhere to the relevant regulations and take the necessary precautions when handling contaminated parts.

Separate clean components according to their materials, and dispose of these accordingly. We offer this service. Further details are available on request.

When sending us any equipment, observe the regulations given in Section "5.3 Leybold service".

Disposal of Waste Oil

Owners of waste oil are entirely self-responsible for proper disposal of this waste.

Waste oil from vacuum pumps must not be mixed with other substances or materials.

Waste oil from vacuum pumps (Leybold oils which are based on mineral oils) which are subject to normal wear and which are contaminated due to the influence of oxygen in the air, high temperatures or mechanical wear must be disposed of through the locally available waste oil disposal system.

Waste oil from vacuum pumps which is contaminated with other substances must be marked and stored in such a way that the type of contamination is apparent. This waste must be disposed of as special waste.

European, national and regional regulations concerning waste disposal need to be observed. Waste must only be transported and disposed of by an approved waste disposal vendor.

EU Declaration of Conformity

(Translation of original Declaration of Conformity)

The manufacturer: Leybold GmbH
Bonner Strasse 498
D-50968 Köln
Germany

herewith declares that the products specified and listed below which we have placed on the market, comply with the applicable EU Council Directives. This declaration becomes invalid if modifications are made to the product without agreement of Leybold GmbH.

Product designation: SOGEVAC

Type designation: SV16, SV25, SV16D, SV25D, SV200, SV1200, SV16B, SV25B, SV40B, SV65B, SV100B, SV120B (I FC), SV300B, SV470B, SV500B, SV570B, SV630B, SV750B, SV28BI (FC), SV40BI (FC), SV65BI (FC), and their variants, excepted pumps delivered without motor

The products complies to the following European Council Directives:

Machinery Directive (2006/42/EC)

The safety objectives of the Low Voltage Directive 2014/35/EU were complied with in accordance with Appendix 1 No. 1.5.1 of Machinery Directive 2006/42/EC.

Electromagnetic Compatibility (2014/30/EU)

RoHS Directive (2011/65/EU) & (2015/863/EU)

The following harmonized standards have been applied:

EN 1012-2:1996+A1:2009	Compressors and vacuum pumps — Safety requirements — Part 2: Vacuum pumps
EN 60204-1:2006/A1:2009	Safety of machinery — Electrical equipment of machines — Part 1: General requirements requirements
EN 61000-6-2:2005/AC:2005	Electromagnetic compatibility (EMC) - Part 6-2: Generic standards - Immunity for industrial environments
EN 61000-6-4:2007/A1:2011	Electromagnetic compatibility (EMC) - Part 6-4: Generic standards - Emission standard for industrial environments

Documentation officer: Herbert Etges
T: +49(0)221 347 0
F: +49(0)221 347 1250
documentation@leybold.com

Cologne, November 14, 2016

Cologne, November 14, 2016



ppa. Martin Tollner
Head of Product Lines



ppa. Dr. Monika Mattern-Klosson
Head of Quality & Business Process Management

Declaration of Contamination of Compressors, Vacuum Pumps and Components

The repair and / or servicing of compressors, vacuum pumps and components will be carried out only if a correctly completed declaration has been submitted. Non-completion will result in delay. The manufacturer can refuse to accept any equipment without a declaration.

A separate declaration has to be completed for each single component.

This declaration may be completed and signed only by authorized and qualified staff.

Customer/Dep./Institute : _____ Address : _____ _____ Person to contact: _____ Phone : _____ Fax: _____ End user: _____	Reason for return: <input checked="" type="checkbox"/> applicable please mark Repair: <input type="checkbox"/> chargeable <input type="checkbox"/> warranty Exchange: <input type="checkbox"/> chargeable <input type="checkbox"/> warranty <input type="checkbox"/> Exchange already arranged / received Return only: <input type="checkbox"/> rent <input type="checkbox"/> loan <input type="checkbox"/> for credit Calibration: <input type="checkbox"/> DKD <input type="checkbox"/> Factory-calibr. <input type="checkbox"/> Quality test certificate DIN 55350-18-4.2.1
--	--

A. Description of the Leybold product: Material description : _____ Catalog number: _____ Serial number: _____ Type of oil (ForeVacuum-Pumps) : _____	Failure description: _____ Additional parts: _____ Application-Tool: _____ Application- Process: _____
--	---

B. Condition of the equipment	No ¹⁾	Yes	No	Contamination :	No ¹⁾	Yes
1. Has the equipment been used	<input type="checkbox"/>	<input type="checkbox"/>	<input type="checkbox"/>	toxic	<input type="checkbox"/>	<input type="checkbox"/>
2. Drained (Product/service fluid)	<input type="checkbox"/>	<input type="checkbox"/>	<input type="checkbox"/>	corrosive	<input type="checkbox"/>	<input type="checkbox"/>
3. All openings sealed airtight	<input type="checkbox"/>	<input type="checkbox"/>	<input type="checkbox"/>	flammable	<input type="checkbox"/>	<input type="checkbox"/>
4. Purged	<input type="checkbox"/>	<input type="checkbox"/>	<input type="checkbox"/>	explosive ²⁾	<input type="checkbox"/>	<input type="checkbox"/>
If yes, which cleaning agent _____				radioactive ²⁾	<input type="checkbox"/>	<input type="checkbox"/>
and which method of cleaning _____				microbiological ²⁾	<input type="checkbox"/>	<input type="checkbox"/>
¹⁾ If answered with "No", go to D. ←				other harmful substances	<input type="checkbox"/>	<input type="checkbox"/>

C. Description of processed substances (Please fill in absolutely)

1. What substances have come into contact with the equipment ?
 Trade name and / or chemical term of service fluids and substances processed, properties of the substances
 According to safety data sheet (e.g. toxic, inflammable, corrosive, radioactive)

X	Tradename:	Chemical name:
a)		
b)		
c)		
d)		

2. Are these substances harmful ? No Yes ←

3. Dangerous decomposition products when heated ? No Yes ←

If yes, which ? _____

²⁾ Components contaminated by microbiological, explosive or radioactive products/substances will not be accepted without written evidence of decontamination.

D. Legally binding declaration

I / we hereby declare that the information supplied on this form is accurate and sufficient to judge any contamination level.

Name of authorized person (block letters) : _____

_____ Date _____ signature of authorized person _____ firm stamp

Sales and Service

Germany

Leybold GmbH

Sales, Service, Support Center (3SC)
Bonner Strasse 498
D-50968 Cologne
T: +49-(0)221-347 1234
F: +49-(0)221-347 31234
sales@leybold.com
www.leybold.com

Leybold GmbH

Sales Area North

Branch Office Berlin
Industriestrasse 10b
D-12099 Berlin
T: +49-(0)30-435 609 0
F: +49-(0)30-435 609 10
sales.bn@leybold.com

Leybold GmbH

Sales Office South

Branch Office Munich
Karl-Hammerschmidt-Strasse 34
D-85609 Aschheim-Dornach
T: +49-(0)89-357 33 9-10
F: +49-(0)89-357 33 9-33
sales.mn@leybold.com
service.mn@leybold.com

Leybold Dresden GmbH

Service Competence Center

Zur Wetterwarte 50, Haus 304
D-01109 Dresden
Service:
T: +49-(0)351-88 55 00
F: +49-(0)351-88 55 041
info.dr@leybold.com

Europe

Belgium

Leybold Nederland B.V.

Belgisch bijkantoor

Leuvensesteenweg 542-9A
B-1930 Zaventem
Sales:
T: +32-2-711 00 83
F: +32-2-720 83 38
sales.zv@leybold.com
Service:
T: +32-2-711 00 82
F: +32-2-720 83 38
service.zv@leybold.com

France

Leybold France S.A.S.

Parc du Technopolis, Bâtiment Beta
3, Avenue du Canada
F-91940 Les Ulis cedex
Sales and Service:
T: +33-1-69 82 48 00
F: +33-1-69 07 57 38
info.ctb@leybold.com
sales.ctb@leybold.com

Leybold France S.A.S.

Valence Factory
640, Rue A. Bergès
B.P. 107
F-26501 Bourg-lès-Valence Cedex
T: +33-4-75 82 33 00
F: +33-4-75 82 92 69
marketing.vc@leybold.com

Great Britain

Leybold UK LTD.

Unit 9
Silverglade Business Park
Leatherhead Road
Chessington
Surrey (London)
KT9 2QL
Sales:
T: +44-13-7273 7300
F: +44-13-7273 7301
sales.ln@leybold.com
Service:
T: +44-13-7273 7320
F: +44-13-7273 7303
service.ln@leybold.com

Italy

Leybold Italia S.r.l.

Via Trasimeno 8
I-20128 Mailand
Sales:
T: +39-02-27 22 31
F: +39-02-27 20 96 41
sales.mi@leybold.com
Service:
T: +39-02-27 22 31
F: +39-02-27 22 32 17
service.mi@leybold.com

Netherlands

Leybold Nederland B.V.

Floridadreef 102
NL-3565 AM Utrecht
Sales and Service:
T: +31-(30) 242 63 30
F: +31-(30) 242 63 31
sales.ut@leybold.com
service.ut@leybold.com

Switzerland

Leybold Schweiz AG

Hinterbergstrasse 56
CH-6312 Steinhausen
Warehouse and shipping address:
Riedthofstrasse 214
CH-8105 Regensdorf
Sales:
T: +41-44-308 40 50
F: +41-44-302 43 73
sales.zh@leybold.com
Service:
T: +41-44-308 40 62
F: +41-44-308 40 60
service.zh@leybold.com

Spain

Leybold Hispánica, S.A.

C/. Huelva, 7
E-08940 Cornellà de Llobregat
(Barcelona)
Sales:
T: +34-93-666 43 11
F: +34-93-666 43 70
sales.ba@leybold.com
Service:
T: +34-93-666 46 11
F: +34-93-685 43 70
service.ba@leybold.com

America

USA

Leybold USA Inc.

5700 Mellon Road
USA-Export, PA 15632
T: +1-724-327-5700
F: +1-724-325-3577
info.ex@leybold.com
Sales:
T: +1-724-327-5700
F: +1-724-333-1217
Service:
T: +1-724-327-5700
F: +1-724-325-3577

Brazil

Leybold do Brasil

Rod. Vice-Prefeito Hermenegildo Tonolli,
nº. 4413 - 6B
Distrito Industrial
Jundiá - SP
CEP 13.213-086
Sales and Service:
T: +55 11 3395 3180
F: +55 11 99467 5934
sales.ju@leybold.com
service.ju@leybold.com

Asia

P. R. China

Leybold (Tianjin)

International Trade Co. Ltd.

Beichen Economic
Development Area (BEDA),
No. 8 Western Shuangchen Road
Tianjin 300400
China
Sales and Service:
T: +86-22-2697 0808
F: +86-22-2697 4061
F: +86-22-2697 2017
sales.tj@leybold.com
service.tj@leybold.com

India

Leybold India Pvt Ltd.

No. 82(P), 4th Phase
K.I.A.D.B. Plot
Bommasandra Industrial Area
Bangalore - 560 099
Indien
Sales and Service:
T: +91-80-2783 9925
F: +91-80-2783 9926
sales.bgl@leybold.com
service.bgl@leybold.com

Japan

Leybold Japan Co., Ltd.

Headquarters
Shin-Yokohama A.K.Bldg., 4th floor
3-23-3, Shin-Yokohama
Kohoku-ku, Yokohama-shi
Kanagawa-ken 222-0033
Japan
Sales:
T: +81-45-471-3330
F: +81-45-471-3323
sales.yh@leybold.com

Leybold Japan Co., Ltd.

Tsukuba Technical Service Center
1959, Kami-yokoba
Tsukuba-shi, Ibaraki-shi 305-0854
Japan
Service:
T: +81-29 839 5480
F: +81-29 839 5485
service.iik@leybold.com

Malaysia

Leybold Malaysia

Leybold Singapore Pte Ltd.

No. 1 Jalan Hi-Tech 2/6
Kulim Hi-Tech Park
Kulim, Kedah Darul
Aman 09000
Malaysia
Sales and Service:
T: +604 4020 222
F: +604 4020 221
sales.ku@leybold.com
service.ku@leybold.com

South Korea

Leybold Korea Ltd.

3F. Jellzone 2 Tower
Jeongja-dong 159-4
Bundang-gu Sungnam-si
Gyeonggi-do
Bundang 463-384, Korea
Sales:
T: +82-31 785 1367
F: +82-31 785 1359
sales.bd@leybold.com
Service:
623-7, Upsung-Dong
Cheonan-Si
Chungcheongnam-Do
Korea 330-290
T: +82-41 589 3035
F: +82-41 588 0166
service.cn@leybold.com

Singapore

Leybold Singapore Pte Ltd.

8 Commonwealth Lane #01-01
Singapore 149555
Singapore
Sales and Service:
T: +65-6303 7030
F: +65-6773 0039
sales.sg@leybold.com
service.sg@leybold.com

Taiwan

Leybold Taiwan Ltd.

No 416-1, Sec. 3
Chunghsin Rd., Chutung
Hsinchu County 310
Taiwan, R.O.C.
Sales and Service:
T: +886-3-500 1688
F: +886-3-583 3999
sales.hc@leybold.com
service.hc@leybold.com

Headquarter

Leybold GmbH

Bonner Strasse 498
D-50968 Cologne
T: +49-(0)221-347-0
F: +49-(0)221-347-1250
info@leybold.com

