

ReUse-MAE: Zerspanung undef. Schneide / cutting Verfahren (Operation / Process) - Spitzenlosschleifen / Centerless grinding

MAE-Hersteller (MAE-manufacturer)

Maschinen-Type (Machine type)

Serien-Nr. (serial No.)

Baujahr (year of manufacture)

Technische Daten (Technical data)

Schleifverfahren - max/min Wkst-Ø-Länge (process - max/min x workp.Ø-L)

Schleifspindel-/Schleifscheiben Geschw. (spindle-/grinding wheel speed)

Schleifscheibe max/min x Breite (grindg.wheel Ømax/min x w)

Drehzahlbereich Regelscheibe (rpm range regulating wheel)

Regelscheiben max/min x Breite (regulating wheel Ømax/min x w)

Abrichtspindel (Type / Drehzahl) (Dressing spindle type/rpm)

MAE-Abmessungen LxBxH [nur MAE] (MAE-dim. L x W x H, only MAE)

MAE Gewicht (MAE weight)

Besonderheiten (special features)

Peripherie (Periphery)

Steuerung (control unit)

Mess-/Auswuchtsystem (Type) (measur./balancing system / type)

Absaugung (extraction systems)

Automation intern (internal automation)

Automation extern (external automation)

Besonderheiten (special features)

Ghiringhelli

M150 SP 610

CNC 7A C656,03

2003

[mm]	Ø4 x 60,123
[1/min]	1200 - 2000
[mm]	Ø610 x 65 x 304
[1/min]	1 - 200 (dressing 400)
[mm]	Ø300 x 55 x 155
[1/min]	Yes, Profilrolle / 2500 – Kaiserrolle / 6000
[mm]	5480 x 4600 x 2480
[kg]	7000
	einsatzbereit ready for use

Siemens 840D

No

zentral

Band belt

Rüttler feeder bowl

-



Inv.Nr. (asset No.)

2001388

ReUse-MAE: Zerspanung undef. Schneide / cutting

Details



Maschine
(machine)



Maschine-Arbeitsraum
(workspace of machine)



Steuerung
(control unit)

Inv.Nr. (asset No.) 2001388

ReUse-MAE: Zerspanung undef. Schneide / cutting

Peripherie



Automation
(external)



Periph. Rückpumpstat.
(return pumping station)

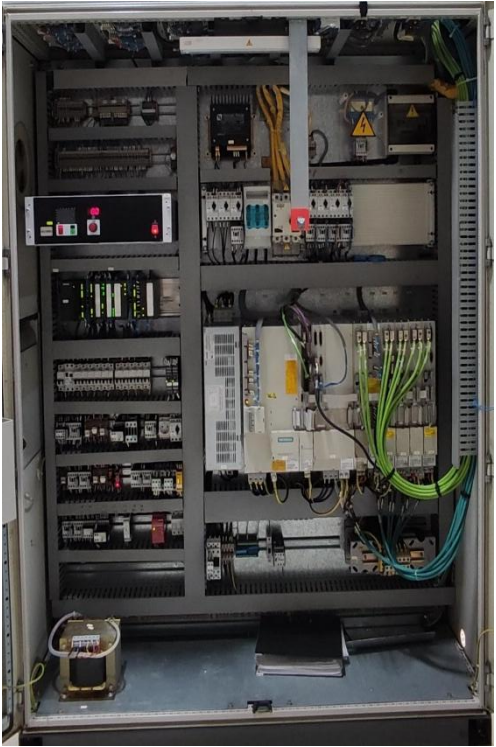


Inv.Nr. (asset No.)

2001388

ReUse-MAE: Zerspanung undef. Schneide / cutting

Zusätzliche Information / additional information



Schaltschrank (geöffnet)
(electrical cabinet (open))



Inv.Nr. (asset No.) 2001388