

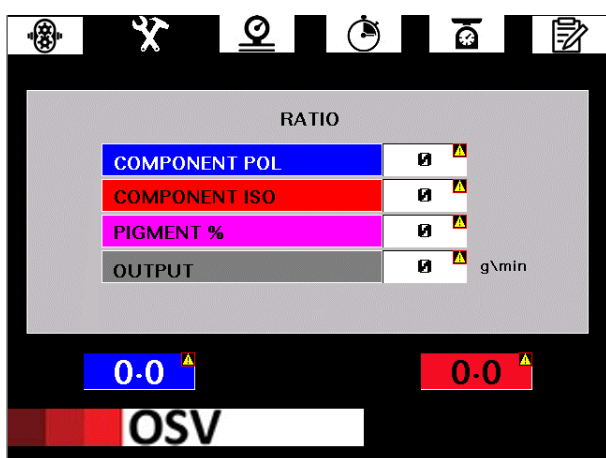
Technical specification



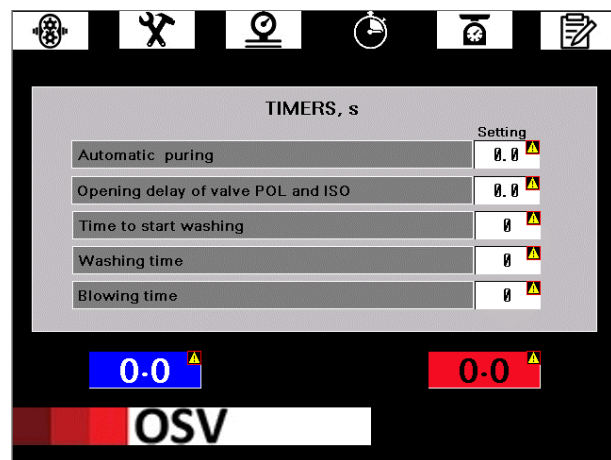
General view of production line

Output range	100 ... 500 ml/min
Ratio adjustment, A:B	1:3 ... 1:7
Sealing strip width	8 ... 16 mm
Position tolerance	0,1 mm
Working area	2 000 x 1 000 x 200 mm
Moving speed	Up to 500 mm/s
Power consumption	4.3 kW

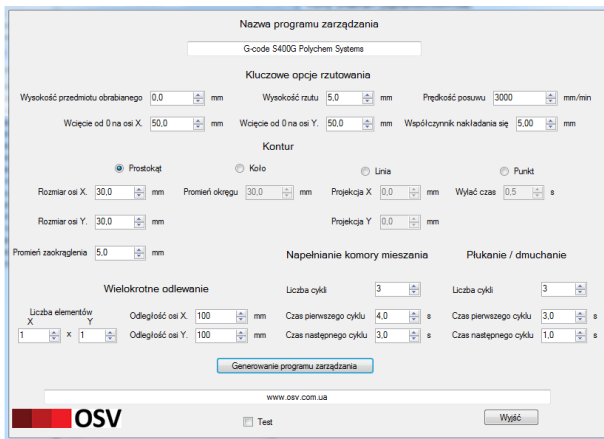
Software review



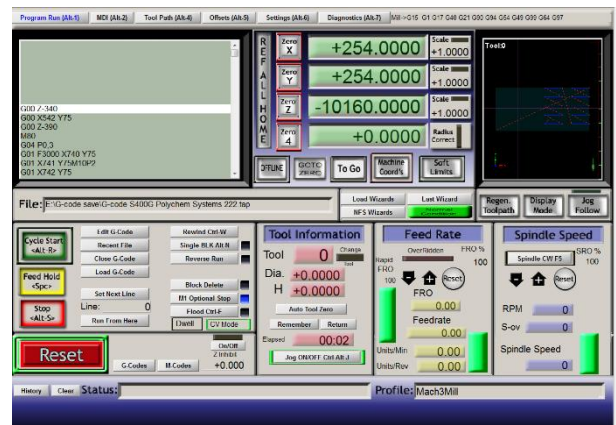
Components ratio setting



Working timers



G-codes generator



Mach3 – CNC machine system controller

Software main tasks

- Stability of settled temperature
- Optimized and predicted power consumption
- Constant circulation and mixing of components for homogenization and obtaining stable quality
- Accurate calculation of the required amount of components depending on the ratio
- Pouring a strictly defined amount of mixed material
- Waste minimization and material loss
- Defines trajectory compaction with an accuracy of 0.1 mm
- Application speed up to 15 m / min
- 100% repeatability in individual and mass production
- Evenly high adhesion along the entire perimeter
- No joints- one-piece whole seal
- Uniform thickness and sealing height along the entire length
- Flat angles without sag and distortion of geometry