



# MAEDA MC405 CRM(E) Mini Crane

## Specifications

Capacity	Maximum	3.83 t x 2.7m
Working Radius	Maximum	16.0m x 210kg
Lifting Height	Maximum	16.8m x 1130kg (20.7m x 520kg with Fly-Jib)
Dimensions	MC405 CRM(E)	4980mm x 1380mm x 1980mm
Weight	MC405 CRM	5600kg
	MC405 CRME	5750kg
Hook Block Weight		50kg
Hook Speed	Maximum	18m / min (4 falls, 4th layer)
Single Line Speed	Maximum	72m / min. (4th layer)
Hoist Rope	Type	IWRC 6 x WS (26) Ø 8mm x 92m
Telescopic System	Boom length	4.735m - 16.475m
	Telescoping speed	11.7m / 41.3 sec
	Boom type	Fully automatic 5 section pentagonal telescopic boom
Boom Hoist System	Hoist angle / speed	0° - 80° / 17 sec
Slew System	Slew angle / speed	360° continuous / 2.5 rpm
Outrigger System	Type	Extension and set-up by hydraulic cylinders.
	Maximum extended dimensions	(Length) 5786mm x (Front) 5118mm x (Rear) 5520mm
Traction System	Drive	Hydraulic motor driven, stepless speed changer
	Travel speed	0 - 3.3 km/h
	Gradability	20°
Ground length x width		1720mm x 320mm (Track dimensions)
	Ground pressure	0.50 kgf / cm² (0.52 kgf / cm² CRME)
Engine	Model	Yanmar 3TNV88-BPMB
	Type	3 cylinder water cooled diesel
	Rated output	21.4 kW / 2400 rpm
	Starting method	Electric
	Fuel tank capacity	Diesel / 60L
Electric Motor (Optional)	Type	Fully enclosed fan cooled motor
	Size	7.5 kW 4P 380V
Standard Equipment	Overwind protection, hydraulic safety valves, level, tilt alarm, EMO switch, travel lock lever, outrigger interlock system, moment limiter, working status lamp, hour-meter, 4-fall / 2-fall hook block, black rubber tracks, digital feedback remote control, data logger	
Optional Equipment	Radio remote control, white rubber tracks, single fall hook, 500kg searcher hook, fly-jib.	

## Total rated load Outriggers at Maximum position

4.735m/7.695m boom		10.655m boom		13.565m boom		16.475m boom	
Working radius (m)	Total rated load (kg)	Working radius (m)	Total rated load (kg)	Working radius (m)	Total rated load (kg)	Working radius (m)	Total rated load (kg)
< 2.7	3830	3.5	3030	4	2230	5	1130
3.5	3030	4	2580	4.5	1930	5.5	980
4	2580	5	2030	5	1730	6	910
5	2030	6	1680	6	1400	7	760
6	1680	7	1380	7	1180	8	650
7	1380	8	1130	8	1030	9	600
7.25	1330	9	880	9	930	10	550
		10.2	580	10	830	11	490
				11	690	12	440
				12	530	13	380
				13.1	430	14	320
						15	260
						16	210

## Total rated load Outriggers at Middle position

4.735m/7.695m boom		10.655m boom		13.565m boom		16.475m boom	
Working radius (m)	Total rated load (kg)	Working radius (m)	Total rated load (kg)	Working radius (m)	Total rated load (kg)	Working radius (m)	Total rated load (kg)
< 2.7	3830	3.5	3030	4	2230	5	1130
3.5	3030	4	2580	4.5	1830	5.5	980
4	2580	5	1880	5	1630	6	910
5	1880	6	1430	6	1330	7	730
6	1430	7	1130	7	1080	8	630
7	1160	8	880	8	880	9	550
7.25	1120	9	740	9	730	10	480
		10.2	490	10	530	11	430
				11	480	12	380
				12	430	13	330
				13.1	330	14	280
						15	220
						16	180

## Total rated load Outriggers at Minimum position

4.735m/7.695m boom		10.655m boom		13.565m boom		16.475m boom	
Working radius (m)	Total rated load (kg)	Working radius (m)	Total rated load (kg)	Working radius (m)	Total rated load (kg)	Working radius (m)	Total rated load (kg)
< 2.7	3830	3.5	3030	4	2230	5	1130
3.5	3030	4	2580	4.5	1830	5.5	980
4	2580	5	1680	5	1630	6	880
5	1680	6	1180	6	1180	7	730
6	1180	7	880	7	830	8	530
7	930	8	730	8	680	9	450
7.25	780	9	580	9	550	10	420
		10.2	400	10	430	11	370
				11	380	12	330
				12	350	13	280
				13.1	310	14	240
						15	190
						16	150

## Maximum Reach Below Ground Level

Four Fall	Two Fall	Single Fall
20.50m	41.00m	82.00m

## Dimensions

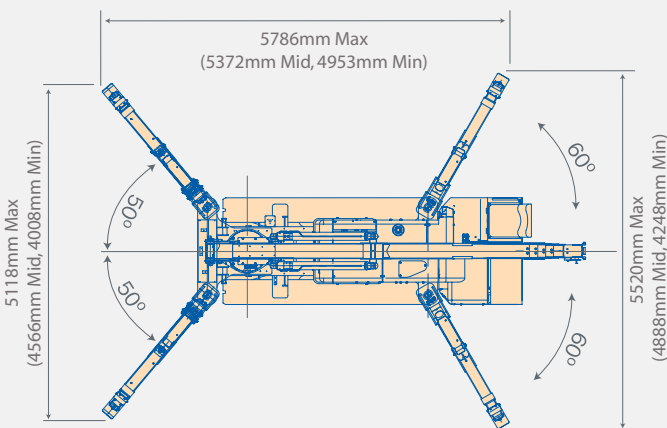
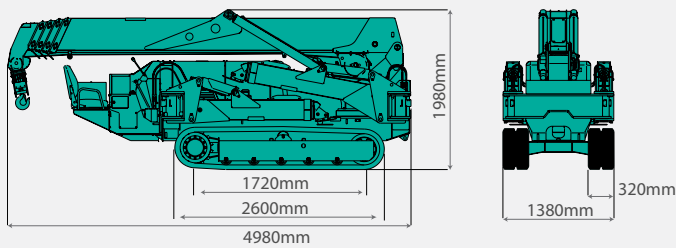
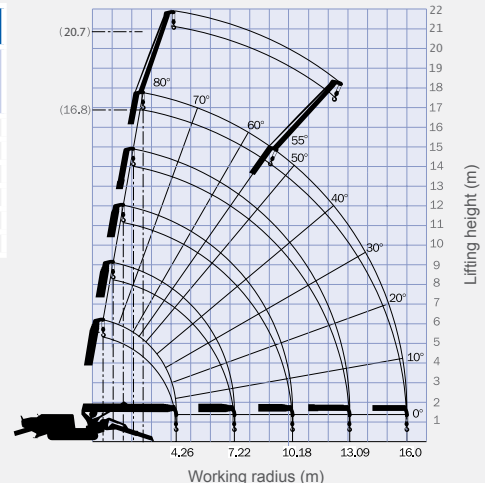


Diagram shows outriggers at maximum position

## Working Range Diagram & Fly Jib total rated load chart

Boom angle (deg)	kg
72+	520
69	420
66	320
63	250
60	220
55	170



The Working Range Chart does not take into account boom deflection under load.