



# FEEDERS

FOR SOLID DOSE PRODUCTS –  
PHARMACEUTICALLY COMPLIANT  
AND PRODUCTIVE.

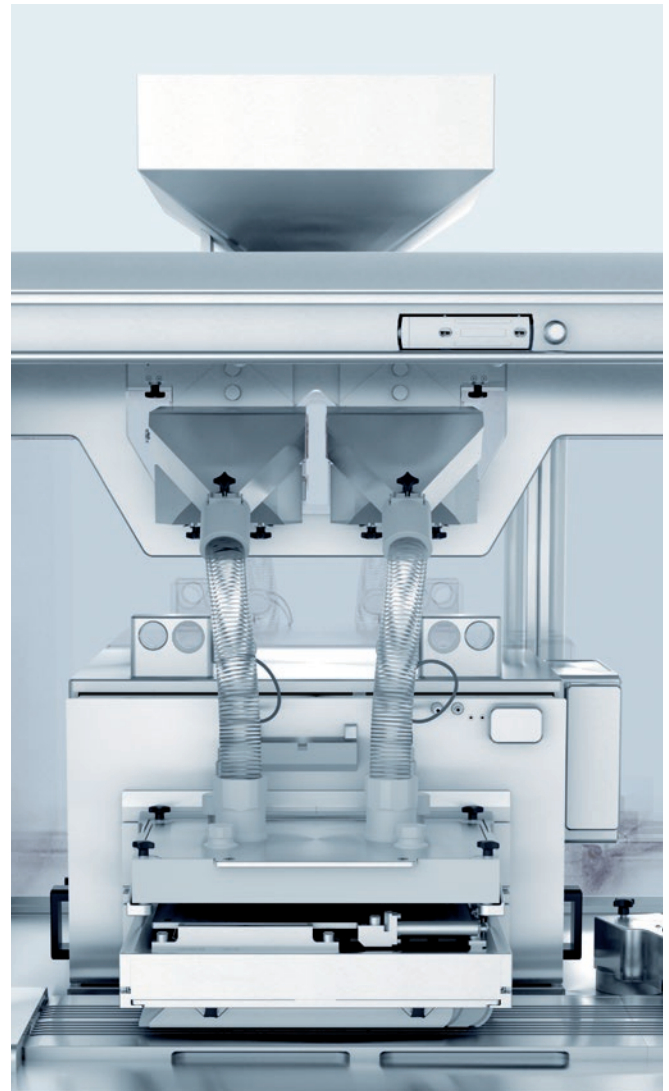
# SIMTAP FEEDER

## FOR STANDARD PRODUCTS AND DIFFICULT PRODUCT SHAPES

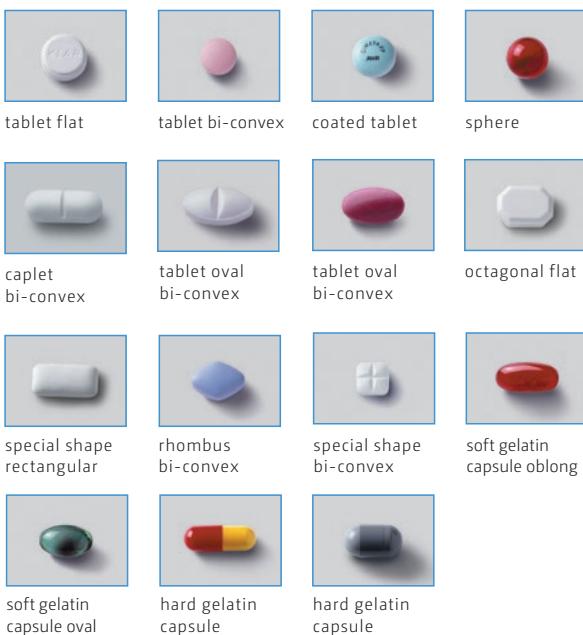
The SimTap operates using the “simultaneous tablet placement” principle, which involves the simultaneous, dedicated placement of the products into the formed pockets. The products first move from the hopper into the vibratory chute. After dust and chip extraction, they then reach the sorting box. The vibration of this brings the products into the filling tubes. Two stop fingers ensure dedicated filling with just one product. Different versions of the SimTap feeder are available – for continuous or intermittent modes of operation, high-performance machines, or small-sized batches.

### POINTS OF SIGNIFICANCE:

- High-performance feeder for a diverse range of products
- Optimum feeding output with an average fill rate of 99.5 percent
- Fast, straightforward format changeover, easy cleaning
- Full guarding for maximum operating safety



### Feedable pharmaceutical products:



## VIBRATORY FEEDER

### COST-EFFICIENT SYSTEM FOR PRODUCTS OF SIMPLE SHAPE

The vibratory feeder allows efficient feeding with a high fill rate and is ideal for all products of simple shape, such as tablets, spheres, caplets, or capsules. This feeder operates with a product surplus in the vibratory bowl and ensures an uninterrupted, trouble-free product flow. Two versions of the vibratory feeder for continuous-motion machines allow optimum selection to suit the products and blister machine: with a fixed chute for PVC forming material or with a filling roller for aluminum forming material.

### POINTS OF SIGNIFICANCE:

- Versatile feeder for numerous product shapes and all thermoforming materials
- Low-cost format parts
- Fast changeover and cleaning of format parts
- Clear overview of the entire feeding process for operating personnel

#### Feedable pharmaceutical products:



tablet flat



tablet bi-convex



sphere



caplet bi-convex



tablet oval bi-convex



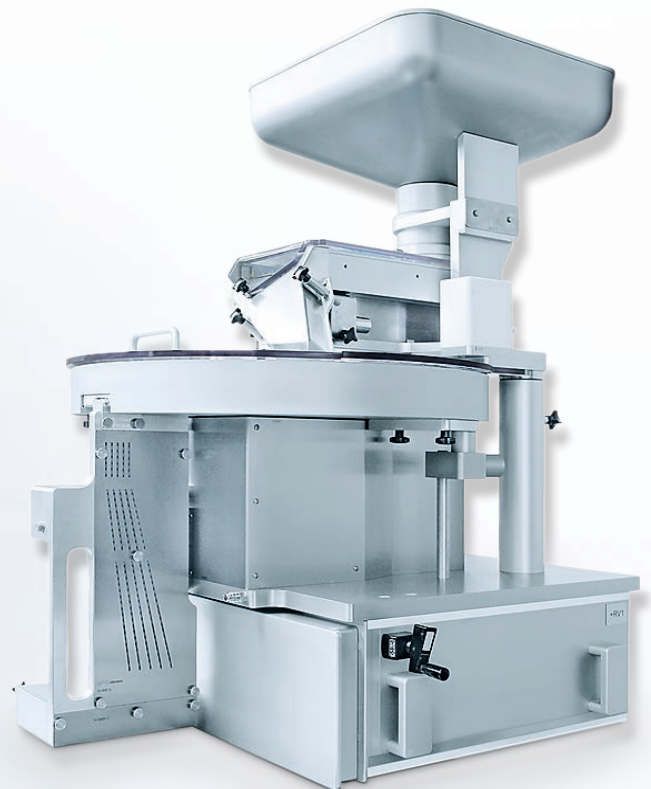
soft gelatin capsule oblong



hard gelatin capsule



hard gelatin capsule



# BRUSH BOX FEEDER

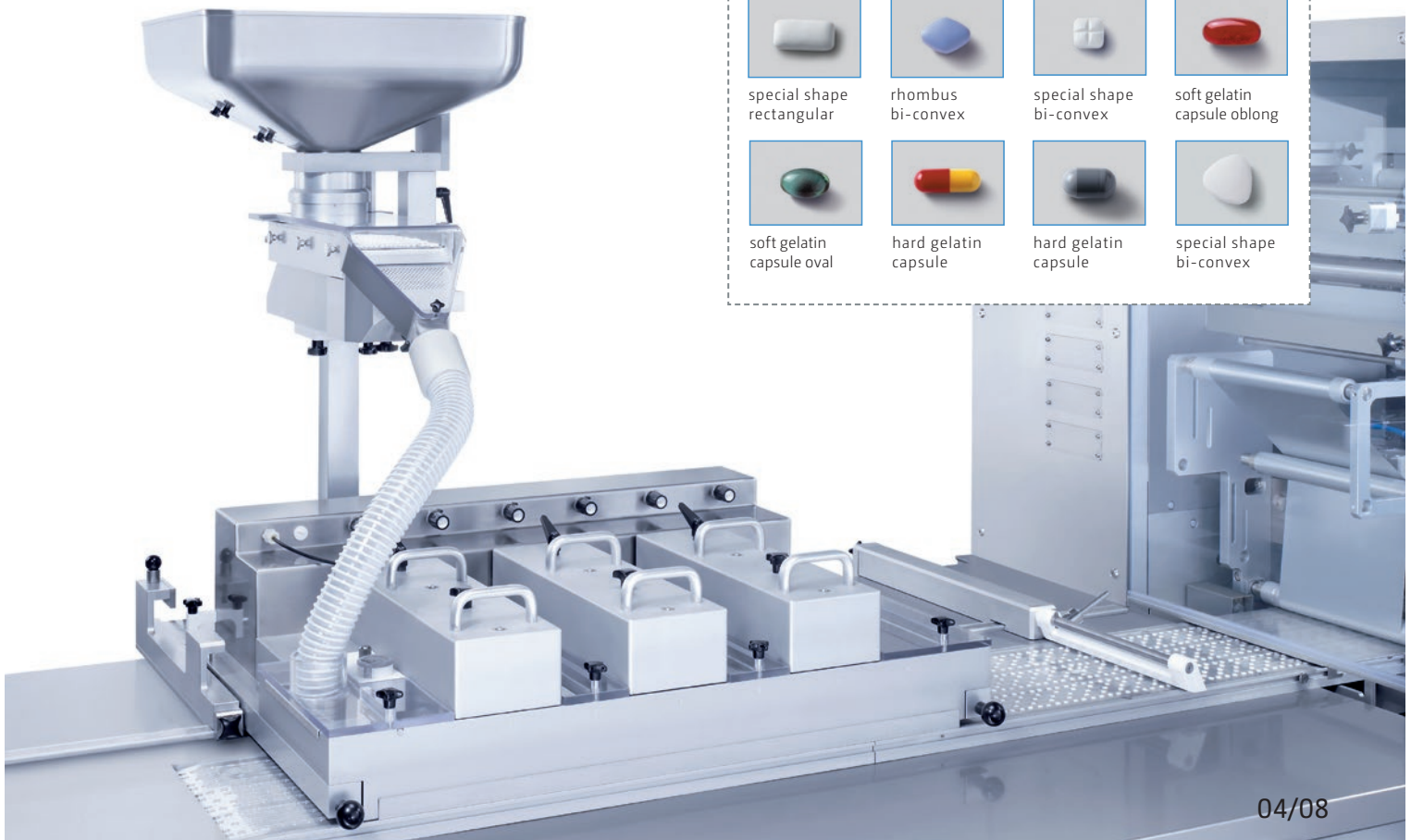
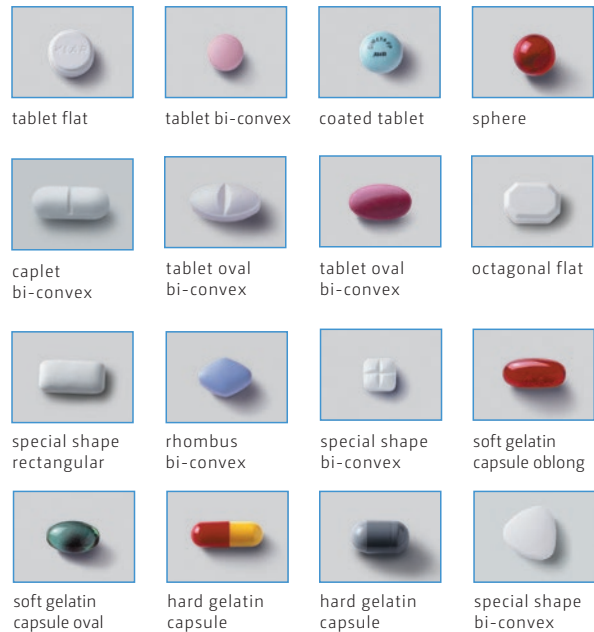
## STRAIGHTFORWARD FUNCTIONALITY FOR VERSATILE USE

The brush box feeder is particularly suitable for all products that can be swept easily into pockets, e.g., bi-convex products and capsules. As format parts are not dictated by the product shape, this feeder is a cost-efficient option for a wide range of applications on all blister machines. The products move from the hopper into the vibratory chute, where chips and dust are extracted. They then pass into the flood feeder, where rotating brushes and planetary stirrers sweep them into the pockets. The speed of the brushes and stirrers, as well as their distance from the web, can be adjusted individually to optimize the filling rate. The drive of the brush box feeder is separate from the web in compliance with GMP specifications.

## POINTS OF SIGNIFICANCE:

- Cost-efficient feeder with random feeding using sweep technology
- Versatile application for numerous product shapes
- Plug-in brushes and stirrers, easy to clean and change
- Suitable for all thermoforming materials
- Low-cost format parts

### Feedable pharmaceutical products:



## FILL BOX FEEDER

### IDEAL FOR MULTIPHASE BLISTERS

The compact fill box with individual product placement is particularly suitable for the feeding of coated tablets and spheres when producing multiphase or specially configured blisters, e.g., round-shaped blisters. The products move from the hopper into the vibratory chute, where dust and chips are extracted. Having reached the fill box, stirrers sweep the products into the holes of the upper supply slide plate. The lower slide plate retracts intermittently to allow one product at a time to be placed into the designated pocket. Separate fill boxes and masks are used for each product of a multiphase blister to ensure pharmaceutically compliant separation to avoid cross-contamination.

### POINTS OF SIGNIFICANCE:

- Cost-efficient feeder with pharmaceutically compliant separation to avoid cross-contamination
- Simple, fast cleaning without the need for special tools
- Suitable for intermittent motion blister machines

#### Feedable pharmaceutical products:



coated tablet



coated tablet



sphere



## LINEAR FEEDER

### IDEAL FOR PROBLEMATICAL PRODUCT SHAPES

Maximum machine uptime characterizes the linear feeder even when the requirements are complex: various complicated product shapes, noticeably differing tolerances, unconventional circular or star-shaped blister configurations, or products susceptible to shingling. The products move from the hopper into the vibratory chute, where dust and chips are extracted. Once in the supply chamber of the feeder, the vibratory movement separates a single layer of products onto the sorting plate. A rotary brush sweeps away surplus products. A vacuum plate with suction cups then takes the products from the sorting plate and places them into the formed pockets. Each product has its own suction cup.

### POINTS OF SIGNIFICANCE:

- Very fast, tool-free changeover involving just two format parts
- Ideal for complex shapes and products with extremely differing thickness tolerances
- Flexible on account of an integrated control cabinet
- Three servo-regulated drives for individual, reproducible adjustments and automatic correction of the feeder position when processing forming materials with a high shrinkage rate

#### Feedable pharmaceutical products:



tablet flat



coated tablet



sphere



caplet  
bi-convex



tablet oval  
bi-convex



tablet oval  
bi-convex



octagonal flat



special shape  
rectangular



rhombus  
bi-convex



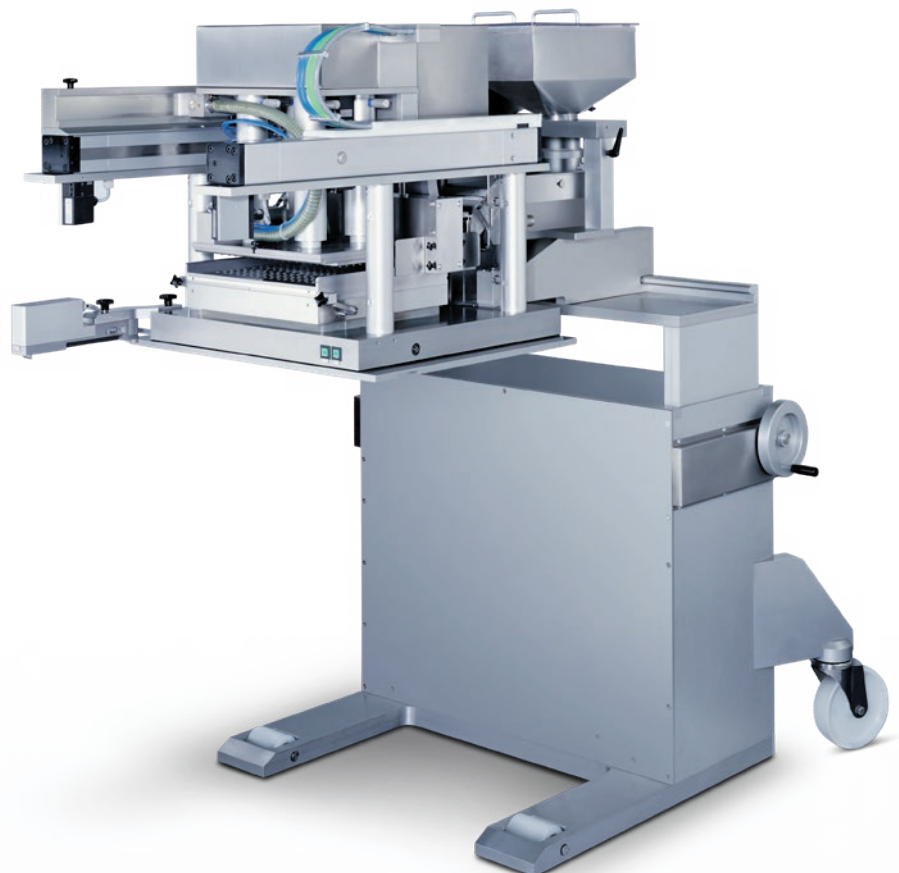
special shape  
bi-convex



soft gelatin  
capsule oval



special shape  
bi-convex



# MANUAL FEEDER

## FLEXIBLE FOR SMALL BATCHES

The manual feeder is the ideal choice when various products are to be packaged in small numbers, e.g., clinical trial packs. Products are taken from a manual filling tray and placed by hand into the formed pockets. Additional filling trays are used when various products are to be packaged. Safety flaps and an emergency stop function ensure a high standard of safety. In addition to fully manual placement, this feeder is available in a second version: a contact-free, sensor-controlled product feed automatically replenishes each tray.

## POINTS OF SIGNIFICANCE:

- Feeder for small quantities and products of varying shape
- Safety functions for operator protection
- Version with sensor-controlled product replenishment

### Feedable pharmaceutical products



tablet flat



tablet bi-convex



coated tablet



sphere



caplet  
bi-convex



tablet oval  
bi-convex



tablet oval  
bi-convex



octagonal flat



special shape  
rectangular



rhombus  
bi-convex



special shape  
bi-convex



soft gelatin  
capsule oblong



soft gelatin  
capsule oval



hard gelatin  
capsule



hard gelatin  
capsule



special shape  
bi-convex



## FEEDING SYSTEMS FOR SOLID DOSE PRODUCTS

### PHARMACEUTICALLY COMPLIANT AND PRODUCTIVE

The diverse range of solid dose products, including particularly susceptible tablets, products of complex shape, caplets, or multiphase preparations, is served by an equally wide selection of efficient feeding systems. The options range from the manual feeder for small quantities to the high-performance SimTap feeder for a large variety of product shapes. All the systems perfectly match the needs of the products to be packaged and the performance profile of the blister machine – be it from Uhlmann or another manufacturer. Every feeder can

be integrated seamlessly into the packaging process, and all of them boast GMP-compliant design, fast format changeovers, easy cleaning, and effective dust and chip extraction. Not only that, Uhlmann goes one step further and offers to optimize the product or blister pocket geometry together with the customer. The outcome is a noticeable improvement in the feeding performance and the filling rate, which denotes a perfect start to the packaging process.



THE **HEARTBEAT** OF PHARMA PACKAGING

To find our locations worldwide  
please visit [www.uhlmann.de](http://www.uhlmann.de)

 A member of  
**Excellence United**

**Uhlmann Pac-Systeme  
GmbH & Co. KG**  
Uhlmannstrasse 14-18  
88471 Laupheim  
Germany  
Phone +49 7392 702-0  
[info@uhlmann.de](mailto:info@uhlmann.de)