

OFFER no. 24220363  
**COMAGRAV DIGI 1715 RCX**  
Professional flatbed cutter with conveyor

Customer:

**COMAGRAV**

Phone:

VAT Nr.:

Date of record: 17.09.2024

**Valid until:**

Description

Q'ty

**COMAGRAV DIGI 1715 RCX flatbed cutting and routing system with conveyor**

1

*PILOT A+, PC, camera system, vacuum 5.5kW, conveyor, Cut2DPro.*

COMAGRAV DIGI multifunctional CNC cutting table with conveyor and endless cutting pad with position for 2 cutting heads.

Working area 1700x1500mm.

CNC cutting table for industry, packaging and sign producers.

Equipped for oscillation cutting, drag cutting, marking, creasing, etc.

AC servo drives and planetary gearboxes are installed. Maximum speed 1150 mm/s, acceleration up to 3000 mm/s<sup>2</sup>.

Vacuum table made of heavy duty aluminum cast panels.

Vacuum blower 5.5kW (Becker Germany). Pressure -315mbar rel., max. flow 390m<sup>3</sup>/h.

Single vacuum zone.

Cutting pad for complete working area.

Camera system with RIP compatibility and automatic cutting mode (QR code recognition).

Sophisticated CNC controller PILOT Advanced for maximum dynamics and speed.

Ready for installation of 2 modules - oscillating knife, universal tangential heads, routing spindle and more.

Standard equipment contains

- vacuum blower 5,5kW
- camera system
- PILOT TDP controller based on Windows
- DELL PC with international warranty 3Y NBD
- Windows 10 IoT Enterprise LTSC for maximum reliability
- preinstalled Teamviewer for remote support
- box for PC, LCD, keyboard, mouse, START/STOP/E-STOP buttons
- second Ethernet card for LAN connection
- automatic Z sensors for setting of starting point
- High-speed interface for connection via Ethernet
- Professional routing software Cut 2D Pro
- rear cylinder for endless move of cutting pad
- pneumatic clamps on both sides of the gantry to fix cutting pad during move
- pneumatic bar on back side of the gantry to hold down material during move

Total weight approx. 970 kg.

Maximal speed 1150mm/s.

Maximum thickness of processed material 60mm.



---

**Passive rolling equipment, for rolls max. 1600mm**

1

Passive rolling equipment at the front or rear for rolls positioning.  
*Including stops to prevent lateral movement and bearings for unwinding the rolls.  
Including steel or aluminum pipe.*

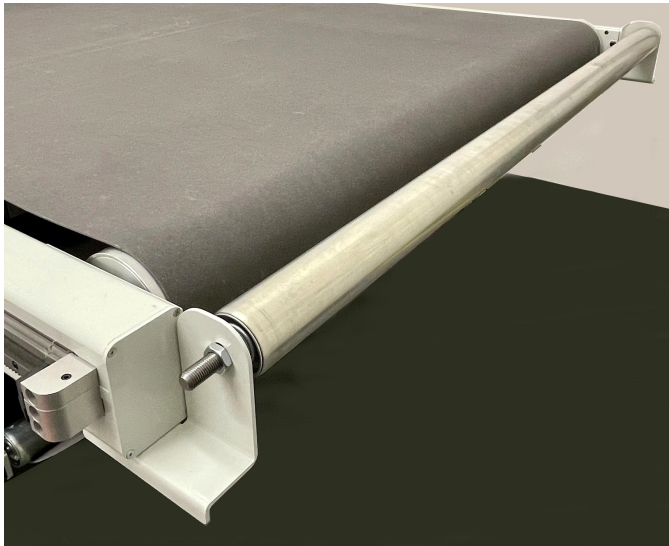


---

**Material guide-roll 1700mm  
for better handling of textiles**

1

*Material guide roll prevents wrinkles and creases in textile materials.  
It is recommended to install material guide-roll with a roll-off unit.*



### **Electric oscillating knife 14K servo**

*A slot, AC servo, 1.5 mm stroke, 14000spm*

Electric oscillation knife head

*High speed cutting in foams, corrugated, reboards, etc.*

*Tangentially controlled (with high quality AC servo drive) cutting head with electric oscillating knife.*

*Stroke 1.5 mm, 14000 strokes per minute.*

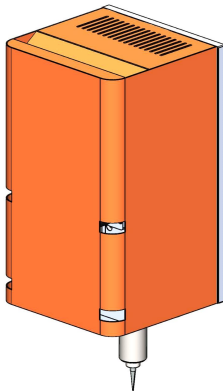
*Ideal for medium thickness materials and fast cutting. (Succesfully tested up to 1150mm/s.)*

*Ready for 6mm round knives.*

*Allows to use flat thin knives with an adapter.*

*Keeps constant cutting depth.*

1



### **Pressure foot**

*for oscillating knife*

Pressure foot

*This tool helps push the material against vacuum table during cutting.*

*Available for pneumatic 9K or electric 18K oscillating knife head.*

*Bottom part is made of low friction plastic.*

1



---

**STARTER SET ROUND Carbide knives**

1

*for hard mat., cardboards etc.*

Set of cutters for oscillating knife

ONK6-10-15-25, for fibrous mat. ONF10-20-30

Round 6mm knives.



---

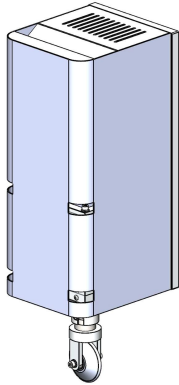
**Tangential module for universal tool U1 (mod B)**

1

*AC servo, tangential rotation, position for insert of U1 tools*

Module for universal tools U1

*AC servo tangentially controlled panel for insertion of U1 tools.**High dynamic cutting.**Allows to use Kiss-cut, V-cut, pen and other U1 cutting devices.*

**KNIFE tool U1**

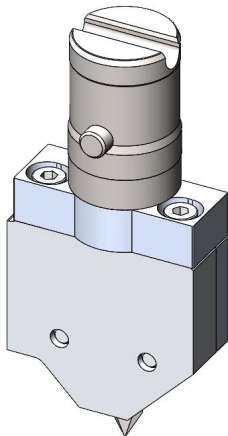
1

*tool holder for carbide knives 1.45mm. Incl. knife E11.*

*Knife holder for U1 tool holder.*

*Includes knife E11.*

*For cutting rigid materials.*

**KISS-CUT tool U1 (v3)**

1

*tool holder + blade*

*KISS-CUT (v3)*

*Tool for U1 tool holder.*

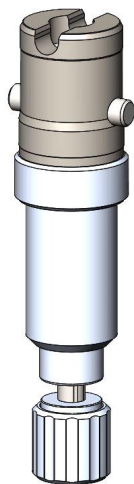
*This cutting tool is designed for cutting of vinyl and similar thin materials that requires exact depth setting. Floating tool.*

*Depth is adjusted manually.*

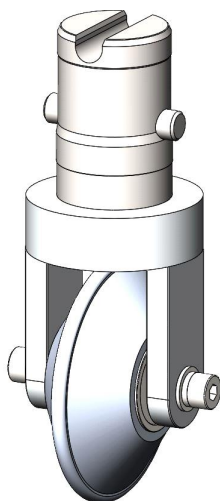
*Teflon gliding surface.*

*Spring preloading adjustment.*

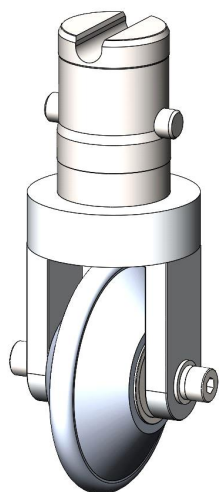
*One knife included.*

**CREASER wheel S U1***creaser wheel for F- and E-flute corrugated*

1

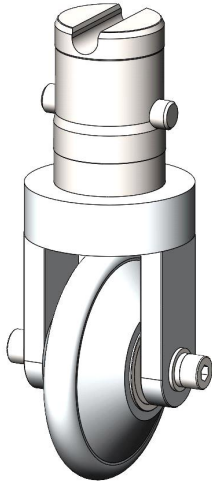
**CREASER wheel M U1***creaser wheel for B- and BC-flute corrugated*

1

**CREASER wheel L U1**

1

*creaser wheel for C-flute corrugated*



## **DIGI professional spindle 730 W/24000 RPM**

1

### *complete set*

Professional routing and engraving spindle for DIGI

Set of the spindle + ramp + dust collector

3 phase spindle with frequency inverter and ER20 tool clamping (diamater up to 12mm).

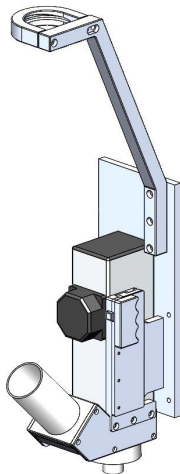
Ceramic bearings for professional and reliable work up to 24.000 RPM.

Hardened and balanced shaft, balanced nut.

*Dust collector with flexible hose and steel ramp to cover complete working area.*

*Includes*

- one routing tool
- 3 collets (3mm, 4mm, 6mm), wrenches and nut
- dust collector with adjustable height
- steel ramp for dust collector
- industrial dust collecting machine with 3 motors (3kW, 432m<sup>3</sup>/h, hose diam. 50mm, 1x230V)



## **STARTER SET DIGI ROUTER "S"**

1

### *Set of tools for plastic and acrylic*

Set of microcarbide routing and engraving tools for COMAGRAV DIGI

13 tools: A310; A320; A330; A440; A660; BN3; D330; D440; D660; G33003; G33006; G44506; G44515

## **Spray cooling system PROFI**

1

*ideal for Aluminium, Alucobond, Dibond, req. compressed air.*

Spray cooler PROFI

*Optional system to spray liquid directly on the tool during cutting process.*

*It is also usable as mister.  
Manual adjustment of compressed air and liquid.  
Includes adjustable holder.  
Requires compressed air.  
The end cap is not flexible and must not be bent!*



**Routing pad 1mm, size 1 x 1 m**

4



TOTAL OFFER	Currency EUR	79 746,00
-------------	--------------	-----------

Made in the Czech Republic.

Price EXW COMAC.

Warranty 12 months, 6 months for spindle and cutting heads.

Payment terms: 30% during order, 70% before expedition from factory.



**THANK YOU FOR YOUR REQUEST. WE ARE AT YOUR SERVICE.**

Issuer: Filip Navrátil

Date of record: 17.09.2024

**Valid until:**

Supplier:

**COMAC spol. s r.o.**  
**Jeremenkova 763/88**  
**140 00 Praha 4**  
**Czech Republic (Europe)**

Identif. number: 15887111  
Tax identity: CZ15887111

Establishment

**COMAC spol. s r.o.**  
**Spojovací 362**  
**257 21 Poříčí nad Sázavou**

Telephone: +420 317 778 022  
Mobile phone: +420 603 252 084  
E-mail: info@comagrav.com  
www.comagrav.com