



**Tomás Guillén**

MAQUINARIA PARA LA INDUSTRIA ALIMENTARIA



## JBT AUTOMATIC CAN SEAMER WITH 48-PISTON FILLER



<b>ID:</b>	<b>000000204525</b>
<b>MAKE</b>	JBT
<b>PRODUCTION</b>	700 CANS/MIN
<b>CURRENT FORMAT</b>	70 mm
<b>STEAM AT THE CLOSING</b>	INCLUDED
<b>INCLUDED</b>	SAFETY CABIN
<b>INCLUDED</b>	CLEANING CIP
<b>SYSTEM</b>	VACIO
<b>MAX FORMAT (MM)</b>	100
<b>MIN FORMAT (MM)</b>	50
<b>VOLT</b>	380 V
<b>FREQUENCY</b>	50 Hz
<b>INCLUDED</b>	VACUUM AND LIQUID PUMP
<b>CONTROL PANNEL</b>	INCLUDED
<b>MADE OF</b>	STAINLESS STEEL
<b>MODEL</b>	859-F1 / XL-U848
<b>CURRENT FORMAT (MM)</b>	52,5
<b>HEADS</b>	6
<b>NUMBER OF PISTONS</b>	48



**Tomás Guillén**

MAQUINARIA PARA LA INDUSTRIA ALIMENTARIA



## JBT AUTOMATIC CAN SEAMER WITH 48-PISTON FILLER

### SPACE TOTAL DIMENSIONS

LENGTH	0,000 m	WIDTH	0,000 m	HEIGHT	0,000 m	WEIGHT	8.200,00 Kg
--------	---------	-------	---------	--------	---------	--------	-------------

### DESCRIPTION

The can seamer is the machine used for hermetically sealing the lid to the can body prior to sterilization. Depending on the product, sterilization can also be done before filling.

The sealing of the can is achieved by deformation and subsequent overlapping by compression of the metal layers of the can body and the lid.

The result is a kind of hook between the two that achieves its hermetic union and, consequently, the tightness of the container. This sealing requires a rubber (sealing gasket) inserted in the rim of the lid to achieve the most effective bonding of the metal layers.

Production will depend on the format and product to be closed.



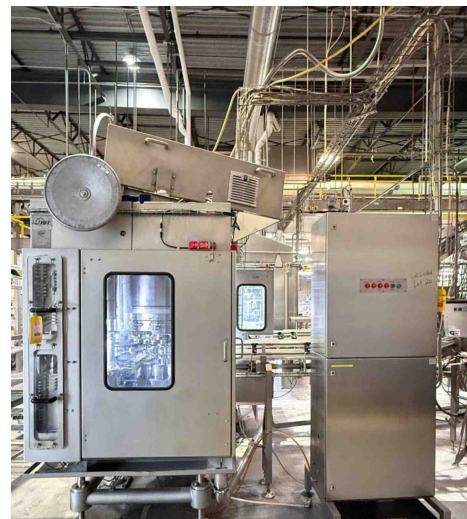
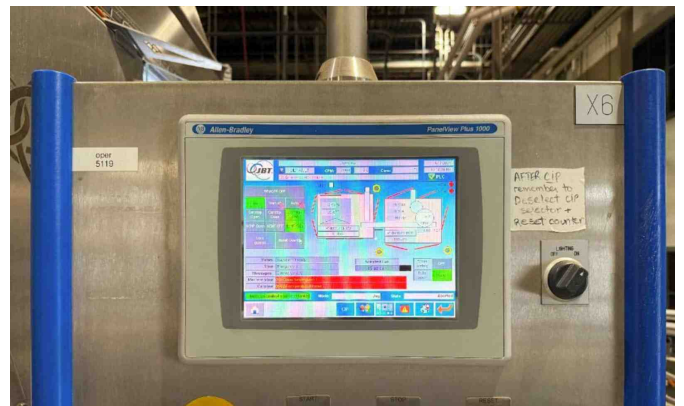
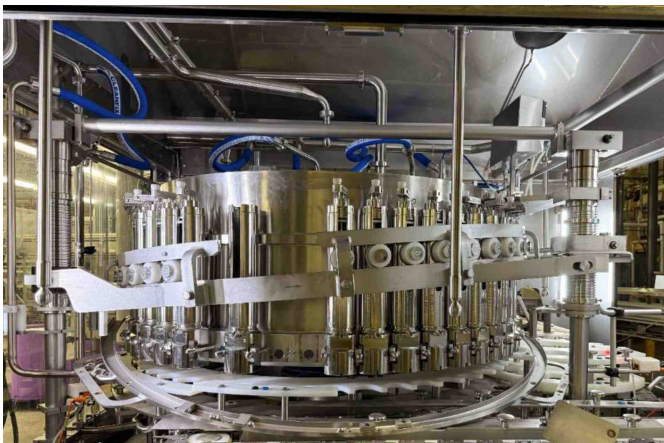
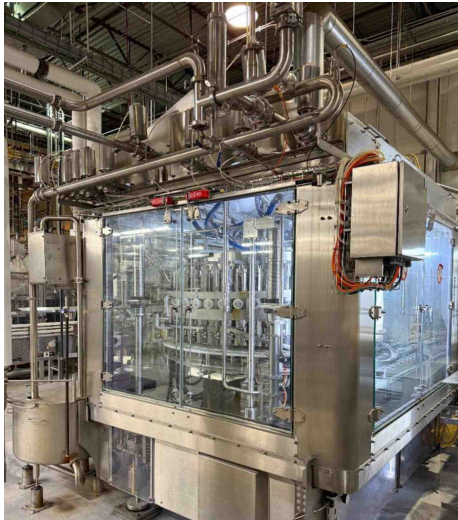


**Tomás Guillén**

MAQUINARIA PARA LA INDUSTRIA ALIMENTARIA



# JBT AUTOMATIC CAN SEAMER WITH 48-PISTON FILLER





**Tomás Guillén**

MAQUINARIA PARA LA INDUSTRIA ALIMENTARIA



## JBT AUTOMATIC CAN SEAMER WITH 48-PISTON FILLER

