

Offer Number 333/26 (5 pages)

Press: LP50VH2 Press in production condition with loading conveyor, construction year: 2014



1

Dear Sirs, We would like to bring to your attention a used automatic horizontal press.
Manufacturer: PRESONA, Sweden

1) Technical specifications Press with conveyor

Technical data baler:

Manufacturer Presona Typ LP 50 VH2

Year of construction 2014

Press power main press 50 tons

Specific press force 63 N/cm²

Feed channel 1,500 x 1,100 mm

Filling volume 2,7 m³

Theoretic throughput capacity 730 m³/hour

Throughput capacity under operating conditions 340 m³/hour

Bale size 1,100 x 720 mm, lenght variable

Drive power 45 kW

Tying system 5-fold, vertical, fully automatic

Throughput capacity at a

- bulk weight of 30 kg/cbm 8 up to 10 tons/hour
- bulk weight of 50 kg/cbm 11 up to 13 tons/hour
- bulk weight of 100 kg/cbm 15 up to 22 tons/hour

Bale density (paper, newspaper) 400 up to 550 kg/m³

Filling volume hydraulic oil tank 600 l

Weight baler 16 tons netto

Scope of delivery: Press, electrical cabinet, control panel

The documentation (operating manual, CE declaration, electrical/hydraulic diagram) is complete.

Visiting is possible by appointment. We are not responsible for technical information or any errors.

Upon request, we can send video materials of the working press

Standard advantages of LP 50 VH2

- Large bale chamber reduces energy consumption and wear
- Pre-pressing saves the required pressing force, no knives or pressure plates required
- Fully automatic strapping machine with 5 strapping wires with automatic twisting, cutting and tightening strapping wire
- Pressure reducing valve on the friction flap for plastic pressing, adjustable (infinitely) from the control panel.
- Hopper preload
- Bale guide from press patch to floor
- Air cooled oil
- Guide wires for unwinding 10 large spools
- Complete hydraulic unit with high speed cartridge control
- Automatic stop of the pump motor in the absence of a boot material. Saves energy and reduces wear
- Diodes on solenoid valves
- Control and management by PLC programmable logic controller with separate control board
- Display on the control board for information and interference indication, with text
- Control system MiniPremi (PREsona Maschine Interface) PLC control system with 5.7-inch. touch screen with animation of the press movement, setting of pressing parameters and production data for 15 pressing programs. Only in conjunction with PLC type Siemens S7.
- Complete control unit for two conveyors
- Photocells, 3 pcs., one in the pre-chamber and 2 in the boot hopper
- Inspection doors with safety switch
- Safety switch for oil level and oil temperature
- Bale length gaug
- Bale counter: Bale and time counter for professional guidance including total press hours, total bales and optional bale counter reset at the beginning of a shift or day

2

2) Loading conveyor Specifications

Conveyor type: chain

Year of manufacture: 2014

Conveyor width: approx. 1300 mm

Horizontal section length: 5,500 mm
 Inclined section length: approx. 10,800 mm
 Gooseneck: yes
 Conveyor weight: approx. 6 t



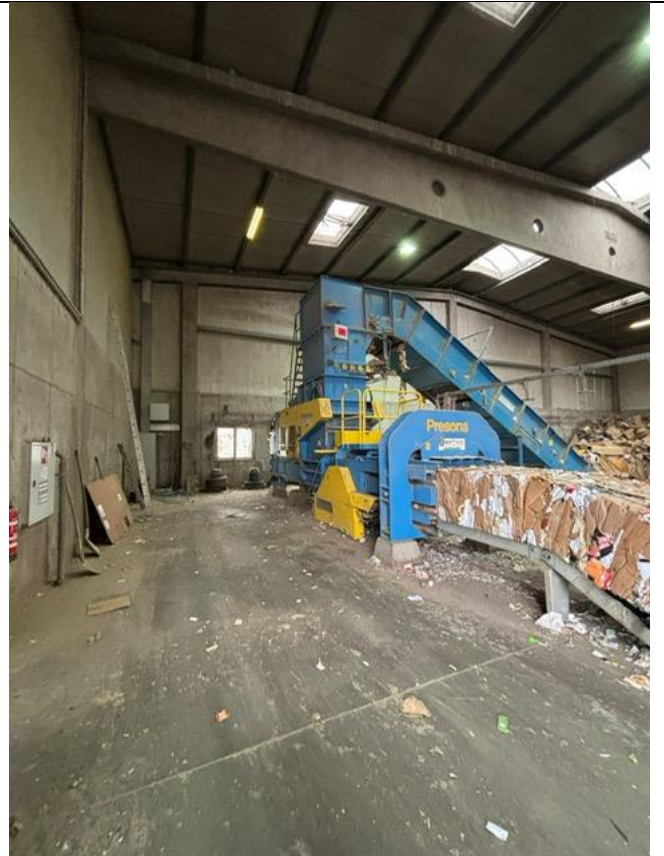
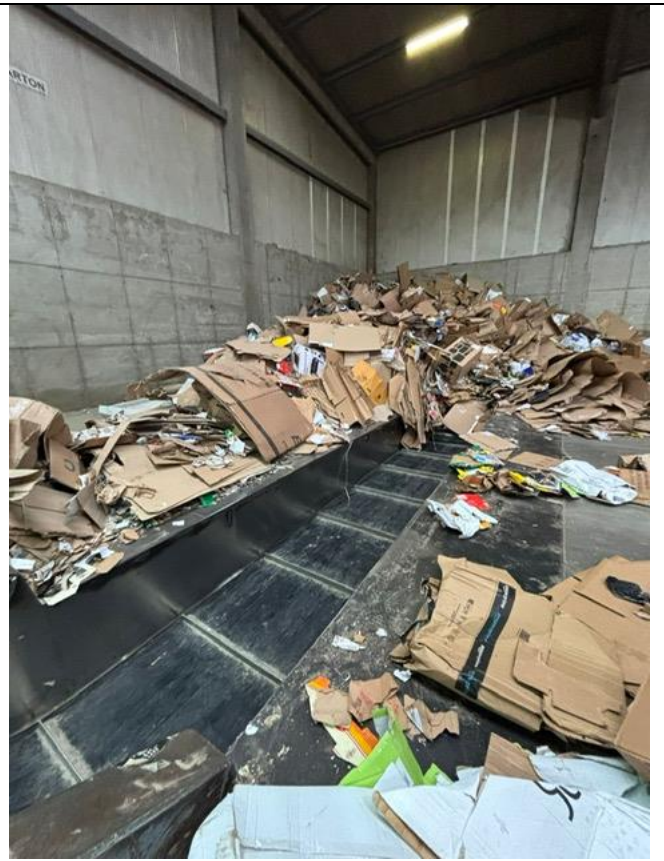
3

фотографии см. внизу...



4

фотографии см. внизу....



5