

FM-X Technical Data

Driver Seated Reach Truck



FM-X 10

FM-X 12

FM-X 14

FM-X 17

FM-X 20

FM-X 25

FM-X iGo



				STILL	STILL	STILL	STILL	STILL	STILL	STILL	STILL
Features	1.1	Manufacturer									
	1.2	Manufacturer's type designation		FM-X 10/Li-Ion	FM-X 10 N	FM-X 12/Li-Ion	FM-X 12 N	FM-X 14/Li-Ion	FM-X 14 N	FM-X 14 W/Li-Ion	FM-X 14 EW/Li-Ion
	1.3	Drive		Electric	Electric	Electric	Electric	Electric	Electric	Electric	Electric
	1.4	Operator type		Seated	Seated	Seated	Seated	Seated	Seated	Seated	Seated
	1.5	Rated capacity/rated load	Q	kg	1000	1000	1200	1200	1400	1400	1400
	1.6	Load capacity at load centre distance	c	mm	600	600	600	600	600	600	600
	1.8	Load centre distance ¹	x	mm	278	184	278	184	348	335	276
	1.9	Wheel base	y	mm	1275	1275	1275	1275	1381	1453	1381
	2.1	Service weight (incl. battery)		kg	3230	3200	3240	3210	3470	3430	3700
Weights	2.3	Axle load, unladen									
		drive end/load end		kg	2040/1190	1970/1230	2130/1100	1970/1230	2250/1220	2120/1310	2290/1410
	2.4	Axle load, fork advanced, laden		kg	960/3270	920/3280	850/3580	920/3280	850/4010	860/3970	960/1410
2.5	Axle load, fork retracted, laden		kg	1730/2500	1590/2610	1820/2610	1590/2610	1950/2910	1770/3060	1920/3180	
Tyres/chassis	3.1	Tyres			Polyurethane	Polyurethane	Polyurethane	Polyurethane	Polyurethane	Polyurethane	Polyurethane
	3.2	Tyre size	drive end	mm	Ø 360 x 130	Ø 360 x 130	Ø 360 x 130	Ø 360 x 130	Ø 360 x 130	Ø 360 x 130	Ø 360 x 130
	3.3	Tyre size	load end	mm	Ø 285 x 100	Ø 285 x 100	Ø 285 x 100	Ø 285 x 100	Ø 285 x 100	Ø 285 x 100	Ø 285 x 100
	3.5	Number of wheels (x = driven)	drive end/load end		1x/2	1x/2	1x/2	1x/2	1x/2	1x/2	1x/2
	3.7	Tread	load end	b ₁₁	mm	1167	1037	1167	1037	1167	1037
	4.1	Tilt of mast/fork carriage	forward/backward ³	α/β	°	1/3	2/4	1/3	2/4	1/3	1/3
	4.2	Height	mast lowered	h ₁	mm	2450	2450	2450	2450	2450	2450
Dimensions	4.3	Free lift		h ₂	mm	1890	1890	1890	1890	1890	1890
	4.4	Lift		h ₃	mm	5750	5750	5750	5750	5750	5750
	4.5	Height	mast extended	h ₄	mm	6310	6310	6310	6310	6310	6310
	4.7	Height of overhead guard (cabin) ⁴		h ₆	mm	2200 (iGo 2500)	2200	2200 (iGo 2500)	2200	2200 (iGo 2500)	2200
	4.8	Seat height		h ₇	mm	1140	1140	1140	1140	1140	1140
	4.10	Height of wheel arms		h ₈	mm	308	308	308	308	308	308
	4.19	Overall length ^{2, 5, 6}		l ₁	mm	2366	2462	2366	2462	2402	2488
	4.20	Length to face of forks ^{2, 5, 6}		l ₂	mm	1216	1312	1216	1312	1252	1338
	4.21	Overall width		b ₁ /b ₂	mm	1270 (iGo 1440)	1140	1270 (iGo 1440)	1140	1270 (iGo 1440)	1140
	4.22	Fork dimensions	DIN ISO 2331	s/e/l	mm	40/80/1150	40/80/1150	40/100/1150	40/100/1150	40/100/1150	40/100/1150
	4.23	Fork carriage ISO 2328, class/type A, B				2/A	2/A	2/A	2/A	2/A	2/A
	4.24	Fork carriage width		b ₃	mm	760	760	760	760	760	760
	4.25	Distance between fork arms	min./max.	b ₅	mm	296/600	296/600	296/600	296/600	316/620	316/620
	4.26	Distance between wheel arms/loading surfaces		b ₄	mm	920	790	920	790	920	790
	4.28	Reach distance		l ₄	mm	449	364	449	364	529	515
	4.31	Ground clearance, laden, below mast		m ₁	mm	70	70	70	70	70	70
	4.32	Ground clearance, centre of wheel base		m ₂	mm	70	70	70	70	70	70
	4.34.1	Aisle width for pallets 1000 x 1200 crossways ²		A _{st}	mm	2679 (iGo 3000 ⁷)	2733	2679 (iGo 3000 ⁷)	2733	2727 (iGo 3000 ⁷)	2787
	4.34.2	Aisle width for pallets 800 x 1200 lengthways ²		A _{st}	mm	2746 (iGo 3150 ⁷)	2812	2746 (iGo 3150 ⁷)	2812	2782 (iGo 3150 ⁷)	2845
	4.35	Turning radius		W _a	mm	1540	1520	1540	1520	1640	1691
	4.37	Length across wheel arms		l ₇	mm	1639	1641	1639	1641	1745	1817
4.43	Step height			mm	345	345	345	345	345	345	
Performance data	5.1	Travel speed	laden/unladen	km/h	14/14 (iGo 6/6)	14/14	14/14 (iGo 6/6)	14/14	14/14 (iGo 6/6)	14/14	14/14
	5.1.1	Travel speed backwards	laden/unladen	km/h	14/14	14/14	14/14	14/14	14/14	14/14	14/14
	5.2	Lifting speed	laden/unladen	m/s	0.47/0.70	0.47/0.70	0.47/0.70	0.47/0.70	0.45/0.68	0.45/0.68	0.45/0.68
	5.3	Lowering speed	laden/unladen	m/s	0.56/0.50	0.56/0.50	0.56/0.50	0.56/0.50	0.56/0.52	0.56/0.52	0.56/0.52
	5.4	Reaching speed	laden/unladen	m/s	0.18	0.18	0.18	0.18	0.18	0.18	0.18
	5.7	Gradeability	laden/unladen	%	10/15	10/15	10/15	10/15	10/15	10/15	10/15
	5.8	Max. gradeability	laden/unladen	%	15/20	15/20	15/20	15/20	15/20	15/20	15/20
	5.9	Acceleration time (over 10 m)	laden/unladen	s	4.5/4.0	4.5/4.0	4.5/4.0	4.5/4.0	4.5/4.0	4.5/4.0	4.5/4.0
	5.10	Service brake				Regenerative-electric/hydraulic	Regenerative-electric/hydraulic	Regenerative-electric/hydraulic	Regenerative-electric/hydraulic	Regenerative-electric/hydraulic	Regenerative-electric/hydraulic
	Electric engine	6.1	Drive motor rating S2 = 60 min		kW	6.5	6.5	6.5	6.5	6.5	6.5
6.2		Lift motor rating S3 = 15%		kW	14	13	14	14	14	14	
6.3		Battery according to DIN 43531/35/36 A, B, C, no				43531 C/254-2	43531 B/254-2	43531 C/254-2	43531 B/254-2	43531 C/254-2	
6.4		Battery voltage/nominal capacity K _s		V/Ah	48/465 Li-Ion: 48/204	48/465	48/465 Li-Ion: 48/204	48/465	48/465 Li-Ion: 48/204	48/465	
6.5		Battery weight (depending on manufacturer ±5%)		kg	750	750	750	750	750	940	
6.6		Energy consumption according to VDI cycle		kWh/h	2.88	2.88	3.23	3.23	3.40	3.40	
Misc.	10.1	Operating pressure for attachments		bar	200	200	200	200	200	200	
	10.2	Oil volume for attachments		l/min	20	20	20	20	20	20	
	10.7	Sound pressure level at driver's seat		dB(A)	69	69	69	69	69	69	

All measurements including sideshift mast or sideshift forks (carriage)

¹ Values decrease by 72 mm per battery size for larger batteries. Applies to the FM-X, FM-X W and FM-X EW;

² Values decrease by 90 mm per battery size for larger batteries. Applies to the FM-X N

³ Aisle width for pallet 1000 x 1200 crosswise:

- Values increase by 56 mm per battery size for larger batteries. Applies to the FM-X, FM-X W and FM-X EW;

- Values increase by 74 mm per battery size for larger batteries. Applies to the FM-X N

Aisle width for pallet 800 x 1200 lengthwise:

- Values increase by 66 mm per battery size for larger batteries. Applies to the FM-X, FM-X W and FM-X EW;

- Values increase by 85 mm per battery size using larger batteries. Applies to the FM-X N

⁴ May vary according to the mast, with sideshift/fork tilt 2°/4°

⁴ With optional cabin/wind protection, height h₆ is 2180 mm

⁵ With optional cabin, length will be extended by 150 mm

⁶ Increases in steps of 72 mm for each larger battery size for FM-X, FM-X W, FM-X EW models

⁷ Increases in steps of 90 mm for each larger battery size for FM-X N model

⁷ Based on smallest battery tray. An additional reduction of up to 150 mm is subject to detailed investigation



				STILL	STILL	STILL	STILL	STILL	STILL			
Features	1.1	Manufacturer										
	1.2	Manufacturer's type designation			FM-X 17/Li-Ion	FM-X 17 N	FM-X 17 W/Li-Ion	FM-X 17 EW/Li-Ion	FM-X 20/Li-Ion	FM-X 20 N		
	1.3	Drive			Electric	Electric	Electric	Electric	Electric	Electric		
	1.4	Operator type			Seated	Seated	Seated	Seated	Seated	Seated		
	1.5	Rated capacity/rated load		Q	kg	1700	1700	1700	2000	2000		
	1.6	Load capacity at load centre distance		c	mm	600	600	600	600	600		
	1.8	Load centre distance ¹		x	mm	410	325	338	338	410	307	
	1.9	Wheel base		y	mm	1453	1453	1453	1453	1525	1525	
	2.1	Service weight (incl. battery)			kg	3470	3500	3740	3790	3820	3830	
Weights	2.3	Axle load, unladen		drive end/load end	kg	2290/1180	2220/1280	2390/1350	2440/1350	2450/1380		
	2.4	Axle load, fork advanced, laden		drive end/load end	kg	730/4440	670/4520	900/4550	950/4550	820/5000	830/5010	
	2.5	Axle load, fork retracted, laden		drive end/load end	kg	2030/3140	1850/3340	2050/3390	2100/3390	2180/3640	2010/3820	
Tyres/chassis	3.1	Tyres				Polyurethane	Polyurethane	Polyurethane	Polyurethane	Polyurethane		
	3.2	Tyre size		drive end	mm	Ø 360 x 130	Ø 360 x 130	Ø 360 x 130	Ø 360 x 130	Ø 360 x 130		
	3.3	Tyre size		load end	mm	Ø 285 x 100	Ø 285 x 100	Ø 285 x 100	Ø 285 x 100	Ø 350 x 100		
	3.5	Number of wheels (x = driven)		drive end/load end		1x/2	1x/2	1x/2	1x/2	1x/2		
	3.7	Tread		load end	b ₁₁	mm	1167	1037	1367	1567	1167	1037
Dimensions	4.1	Tilt of mast/fork carriage		forward/backward ³	α/β	°	1/3	2/4	1/3	1/3	2/4	
	4.2	Height		mast lowered	h ₁	mm	2450	2450	2450	2450	2450	2450
	4.3	Free lift			h ₂	mm	1880	1880	1880	1880	1880	1880
	4.4	Lift			h ₃	mm	5750	5750	5750	5750	5580	5580
	4.5	Height		mast extended	h ₄	mm	6320	6320	6320	6320	6150	6150
	4.7	Height of overhead guard (cabin) ⁴			h ₆	mm	2200 (iGo 2500)	2200	2200	2200	2200 (iGo 2500)	2200
	4.8	Seat height			h ₇	mm	1140	1140	1140	1140	1140	1140
	4.10	Height of wheel arms			h ₈	mm	308	308	308	308	373	373
	4.19	Overall length ^{2, 5, 6}			l ₁	mm	2412	2499	2484	2484	2484	2589
	4.20	Length to face of forks ^{2, 5, 6}			l ₂	mm	1262	1349	1334	1334	1334	1439
	4.21	Overall width			b ₁ /b ₂	mm	1270 (iGo 1440)	1140	1470	1670	1270 (iGo 1440)	1140
	4.22	Fork dimensions		DIN ISO 2331	s/e/l	mm	50/100/1150	50/100/1150	50/100/1150	50/100/1150	50/100/1150	50/100/1150
	4.23	Fork carriage ISO 2328, class/type A, B					2/A	2/A	2/A	2/A	2/A	2/A
	4.24	Fork carriage width			b ₃	mm	760	760	760	760	760	760
	4.25	Distance between fork arms		min./max.	b ₅	mm	316/620	316/620	316/620	316/620	316/620	316/620
	4.26	Distance between wheel arms/loading surfaces			b ₄	mm	920	790	1120	1320	920	790
	4.28	Reach distance			l ₄	mm	591	505	519	519	623	520
	4.31	Ground clearance, laden, below mast			m ₁	mm	70	70	70	70	70	70
	4.32	Ground clearance, centre of wheel base			m ₂	mm	70	70	70	70	70	70
	4.34.1	Aisle width for pallets 1000 x 1200 crossways ²			A _{st}	mm	2752 (iGo 3050 ⁷)	2795	2844	2879	2820 (iGo 3100 ⁷)	2879
	4.34.2	Aisle width for pallets 800 x 1200 lengthways ²			A _{st}	mm	2796 (iGo 3150 ⁷)	2854	2901	2936	2864 (iGo 3200 ⁷)	2941
	4.35	Turning radius			W _a	mm	1710	1691	1750	1785	1778	1762
	4.37	Length across wheel arms			l ₇	mm	1817	1819	1817	1817	1922	1924
	4.43	Step height				mm	345	345	345	345	345	345
	Performance data	5.1	Travel speed		laden/unladen	km/h	14/14 (iGo 6/6)	14/14	14/14	14/14	14/14 (iGo 6/6)	14/14
		5.1.1	Travel speed backwards		laden/unladen	km/h	14/14	14/14	14/14	14/14	14/14	14/14
		5.2	Lifting speed		laden/unladen	m/s	0.45/0.68	0.45/0.68	0.45/0.68	0.45/0.68	0.37/0.58	0.37/0.58
5.3		Lowering speed		laden/unladen	m/s	0.55/0.52	0.55/0.52	0.56/0.52	0.56/0.52	0.53/0.50	0.53/0.50	
5.4		Reaching speed		laden/unladen	m/s	0.18	0.18	0.18	0.18	0.18	0.18	
5.7		Gradeability		laden/unladen	%	10/15	10/15	10/15	10/15	10/15	10/15	
5.8		Max. gradeability		laden/unladen	%	15/20	15/20	15/20	15/20	15/20	15/20	
5.9		Acceleration time (over 10 m)		laden/unladen	s	4.5/4.0	4.5/4.0	4.5/4.0	4.5/4.0	4.5/4.0	4.5/4.0	
5.10		Service brake					Regenerative-electric/hydraulic	Regenerative-electric/hydraulic	Regenerative-electric/hydraulic	Regenerative-electric/hydraulic	Regenerative-electric/hydraulic	Regenerative-electric/hydraulic
Electric engine	6.1	Drive motor rating S2 = 60 min			kW	6.5	6.5	6.5	6.5	6.5	6.5	
	6.2	Lift motor rating S3 = 15 %			kW	14	14	14	14	14	14	
	6.3	Battery according to DIN 43531/35/36 A, B, C, no				43531 C/254-2	43531 B/254-2	43531 C/254-2	43531 C/254-2	43531 C/254-2	43531 B/254-2	
	6.4	Battery voltage/nominal capacity K _s			V/Ah	48/465 Li-Ion: 48/204	48/465	48/420 Li-Ion: 48/817	48/620 Li-Ion: 48/817	48/620 Li-Ion: 48/817	48/620	
	6.5	Battery weight (depending on manufacturer ±5 %)			kg	750	750	940	940	940	940	
	6.6	Energy consumption according to VDI cycle			kWh/h	3.56	3.56	3.56	3.56	3.59	3.59	
Misc.	10.1	Operating pressure for attachments			bar	200	200	200	200	200	200	
	10.2	Oil volume for attachments			l/min	20	20	20	20	20	20	
	10.7	Sound pressure level at driver's seat			dB(A)	69	69	69	69	69	69	

All measurements including sideshift mast or sideshift forks (carriage)

¹ Values decrease by 72 mm per battery size for larger batteries. Applies to the FM-X, FM-X W and FM-X EW;

Values decrease by 90 mm per battery size for larger batteries. Applies to the FM-X N

² Aisle width for pallet 1000 x 1200 crosswise:

- Values increase by 56 mm per battery size for larger batteries. Applies to the FM-X, FM-X W and FM-X EW;

- Values increase by 74 mm per battery size for larger batteries. Applies to the FM-X N

Aisle width for pallet 800 x 1200 lengthwise:

- Values increase by 66 mm per battery size for larger batteries. Applies to the FM-X, FM-X W and FM-X EW;

- Values increase by 85 mm per battery size using larger batteries. Applies to the FM-X N

³ May vary according to the mast, with sideshift/fork tilt 2°/4°

⁴ With optional cabin/wind protection, height h₆ is 2180 mm

⁵ With optional cabin, length will be extended by 150 mm

⁶ Increases in steps of 72 mm for each larger battery size for FM-X, FM-X W, FM-X EW models

Increases in steps of 90 mm for each larger battery size for FM-X N model

⁷ Based on smallest battery tray. An additional reduction of up to 150 mm is subject to detailed investigation



				STILL	STILL	STILL	STILL	STILL	STILL		
Features	1.1	Manufacturer									
	1.2	Manufacturer's type designation			FM-X 20 W/Li-Ion	FM-X 20 EW/Li-Ion	FM-X 20 HD/Li-Ion	FM-X 25/Li-Ion	FM-X 25 W/Li-Ion	FM-X 25 EW/Li-Ion	
	1.3	Drive			Electric	Electric	Electric	Electric	Electric	Electric	
	1.4	Operator type			Seated	Seated	Seated	Seated	Seated	Seated	
	1.5	Rated capacity/rated load		Q	kg	2000	2000	2000	2500	2500	2500
	1.6	Load capacity at load centre distance		c	mm	600	600	600	600	600	600
	1.8	Load centre distance ¹		x	mm	410	410	482	482	482	482
	1.9	Wheel base		y	mm	1525	1525	1669	1669	1669	1669
	Weights	2.1	Service weight (incl. battery)			kg	3870	3920	5110	4110	4170
2.3		Axle load, unladen		drive end/load end	kg	2490/1380	2510/1410	3030/2080	2640/1470	2620/1520	2600/1570
2.4		Axle load, fork advanced, laden		drive end/load end	kg	840/5030	860/5060	900/6410	810/5790	790/5840	770/5890
2.5		Axle load, fork retracted, laden		drive end/load end	kg	2200/3670	2220/3700	2810/4500	2420/4190	2400/4240	2380/4290
3.1		Tyres				Polyurethane	Polyurethane	Polyurethane	Polyurethane	Polyurethane	Polyurethane
Tyres/chassis	3.2	Tyre size		drive end	mm	Ø 360 x 130	Ø 360 x 130	Ø 360 x 140	Ø 360 x 140	Ø 360 x 140	
	3.3	Tyre size		load end	mm	Ø 350 x 100	Ø 350 x 100	Ø 350 x 100	Ø 350 x 100	Ø 350 x 100	
	3.5	Number of wheels (x = driven)		drive end/load end		1x/2	1x/2	1x/2	1x/2	1x/2	
	3.7	Tread		load end	b ₁₁	mm	1367	1567	1167	1167	1367
	4.1	Tilt of mast/fork carriage		forward/backward ³	α/β	°	1/3	1/3	2/4	1/3	1/3
	4.2	Height		mast lowered	h ₁	mm	2450	2450	5200	2450	2450
	4.3	Free lift			h ₂	mm	1880	1880	4578	1828	1828
Dimensions	4.4	Lift			h ₃	mm	5580	5580	12500	5580	5580
	4.5	Height		mast extended	h ₄	mm	6150	6150	13122	6202	6202
	4.7	Height of overhead guard (cabin) ⁴			h ₆	mm	2200	2200	2200 (iGo 2500)	2200 (iGo 2500)	2200
	4.8	Seat height			h ₇	mm	1140	1140	1140	1140	1140
	4.10	Height of wheel arms			h ₈	mm	373	373	373	373	373
	4.19	Overall length ^{2, 5, 6}			l ₁	mm	2484	2484	2556	2556	2556
	4.20	Length to face of forks ^{2, 5, 6}			l ₂	mm	1334	1334	1406	1406	1406
	4.21	Overall width			b ₁ /b ₂	mm	1470	1670	1270 (iGo 1440)	1270 (iGo 1440)	1470
	4.22	Fork dimensions		DIN ISO 2331	s/e/l	mm	50/100/1150	50/100/1150	50/120/1150	50/120/1150	50/120/1150
	4.23	Fork carriage ISO 2328, class/type A, B					2/A	2/A	2/A	2/A	2/A
	4.24	Fork carriage width			b ₃	mm	760	760	760	760	760
	4.25	Distance between fork arms		min./max.	b ₅	mm	316/620	316/620	336/640	336/640	336/640
	4.26	Distance between wheel arms/loading surfaces			b ₄	mm	1120	1320	920	920	1120
	4.28	Reach distance			l ₄	mm	623	623	695	695	695
	4.31	Ground clearance, laden, below mast			m ₁	mm	70	70	70	70	70
	4.32	Ground clearance, centre of wheel base			m ₂	mm	70	70	50	50	50
	4.34.1	Aisle width for pallets 1000 x 1200 crossways ²			A _{st}	mm	2857	2892	2908 (iGo 3250 ⁷)	2908 (iGo 3250 ⁷)	2943
	4.34.2	Aisle width for pallets 800 x 1200 lengthways ²			A _{st}	mm	2901	2936	2937 (iGo 3300 ⁷)	2937 (iGo 3300 ⁷)	2972
	4.35	Turning radius			W _a	mm	1815	1850	1915	1915	1950
	4.37	Length across wheel arms			l ₇	mm	1922	1922	2066	2066	2066
	4.43	Step height				mm	345	345	345	345	345
Performance data	5.1	Travel speed		laden/unladen	km/h	14/14	14/14	14/14 (iGo 6/6)	14/14 (iGo 6/6)	14/14	
	5.1.1	Travel speed backwards		laden/unladen	km/h	14/14	14/14	14/14	14/14	14/14	
	5.2	Lifting speed		laden/unladen	m/s	0.37/0.58	0.37/0.58	0.34/0.50	0.34/0.50	0.34/0.50	
	5.3	Lowering speed		laden/unladen	m/s	0.53/0.50	0.53/0.50	0.52/0.50	0.52/0.50	0.52/0.50	
	5.4	Reaching speed		laden/unladen	m/s	0.18	0.18	0.18	0.18	0.18	
	5.7	Gradeability		laden/unladen	%	10/15	10/15	10/15	10/15	10/15	
	5.8	Max. gradeability		laden/unladen	%	15/20	15/20	15/20	15/20	15/20	
	5.9	Acceleration time (over 10 m)		laden/unladen	s	4.5/4.0	4.5/4.0	4.5/4.0	4.5/4.0	4.5/4.0	
	5.10	Service brake					Regenerative-electric/hydraulic	Regenerative-electric/hydraulic	Regenerative-electric/hydraulic	Regenerative-electric/hydraulic	Regenerative-electric/hydraulic
Electric engine	6.1	Drive motor rating S2 = 60 min			kW	6.5	6.5	6.5	6.5	6.5	
	6.2	Lift motor rating S3 = 15%			kW	14	14	14	14	14	
	6.3	Battery according to DIN 43531/35/36 A, B, C, no				43531 C/254-2	43531 C/254-2	43531 C/254-2	43531 C/254-2	43531 C/254-2	
	6.4	Battery voltage/nominal capacity K _s			V/Ah	48/620 Li-Ion: 48/817	48/620 Li-Ion: 48/817	48/775 Li-Ion: 48/817	48/775 Li-Ion: 48/817	48/775 Li-Ion: 48/817	48/775 Li-Ion: 48/817
	6.5	Battery weight (depending on manufacturer ±5%)			kg	940	940	1120	1120	1120	
	6.6	Energy consumption according to VDI cycle			kWh/h	3.59	3.59	3.59	4.49	4.49	
Misc.	10.1	Operating pressure for attachments			bar	200	200	200	200	200	
	10.2	Oil volume for attachments			l/min	20	20	20	20	20	
	10.7	Sound pressure level at driver's seat			dB(A)	69	69	69	69	69	

All measurements including sideshift mast or sideshift forks (carriage)

¹ Values decrease by 72 mm per battery size for larger batteries. Applies to the FM-X, FM-X W and FM-X EW;

Values decrease by 90 mm per battery size for larger batteries. Applies to the FM-X N

² Aisle width for pallet 1000 x 1200 crosswise:

- Values increase by 56 mm per battery size for larger batteries. Applies to the FM-X, FM-X W and FM-X EW;

- Values increase by 74 mm per battery size for larger batteries. Applies to the FM-X N

Aisle width for pallet 800 x 1200 lengthwise:

- Values increase by 66 mm per battery size for larger batteries. Applies to the FM-X, FM-X W and FM-X EW;

- Values increase by 85 mm per battery size using larger batteries. Applies to the FM-X N

³ May vary according to the mast, with sideshift/fork tilt 2°/4°

⁴ With optional cabin/wind protection, height h₆ is 2180 mm

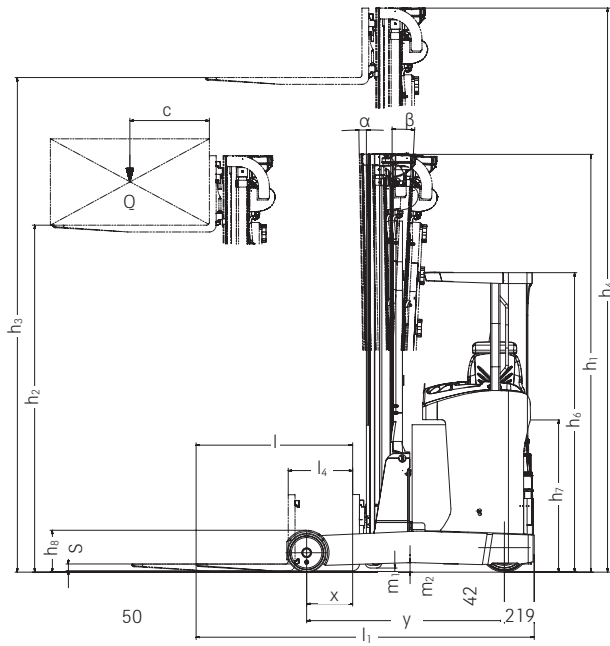
⁵ With optional cabin, length will be extended by 150 mm

⁶ Increases in steps of 72 mm for each larger battery size for FM-X, FM-X W, FM-X EW models

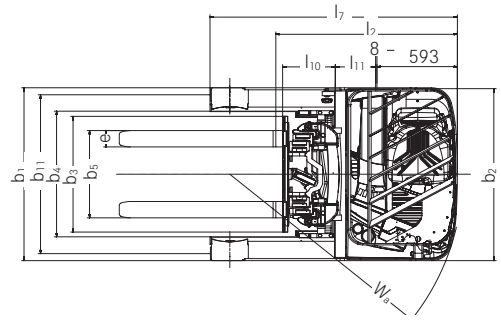
Increases in steps of 90 mm for each larger battery size for FM-X N model

⁷ Based on smallest battery tray. An additional reduction of up to 150 mm is subject to detailed investigation

FM-X Driver Seated Reach Truck
 Technical Drawings



Side view



Top view



FM-X Driver Seated Reach Truck
Mast Tables



Triplex				
	Height, mast lowered h ₁ in mm	Free lift h ₂ in mm	Lift h ₃ in mm	Height, mast extended h ₄ in mm
FM-X 10/10 N - FM-X 12/12 N FM-X 14/14 N/14 W/14 EW	1950	1390	4250	4810
	2015	1455	4440	5000
	2050	1490	4550	5110
	2200	1640	5000	5560
	2250	1690	5150	5710
	2300	1740	5300	5860
	2400	1840	5600	6160
	2450	1890	5750	6310
	2500	1940	5900	6460
	2600	2040	6200	6760
2700	2140	6500	7060	
FM-X 10 N FM-X 10 FM-X 12 N FM-X 12	2800	2240	6700	7260
	2900	2340	7000	7560
FM-X 10 N FM-X 10 FM-X 12 N FM-X 12	2800	2240	6700	7360
	2900	2340	7000	7660
FM-X 14/14 N/14 W/14 EW	2800	2240	6800	7360
	2900	2340	7100	7660
	3000	2440	7400	7960
	3100	2540	7700	8260
	3200	2640	8000	8560
	3300	2740	8300	8860
	3400	2840	8600	9160
	3500	2940	8900	9460
	3600	3040	9200	9760
	3700	3140	9500	10060
3800	3240	9800	10360	
FM-X 14 N - FM-X 17 N	1950	1380	4250	4820
	2015	1445	4440	5010
	2050	1480	4550	5120
	2200	1630	5000	5570
	2250	1680	5150	5720
	2300	1730	5300	5870
	2400	1830	5600	6170
	2450	1880	5750	6320
	2500	1930	5900	6470
	2600	2030	6200	6770
	2700	2130	6500	7070
	2800	2230	6800	7370
	2900	2330	7100	7670
	3000	2430	7400	7970
	3100	2530	7700	8270
	3200	2630	8000	8570
	3300	2730	8300	8870
	3400	2830	8600	9170
	3500	2930	8900	9470
	3600	3030	9200	9770
3700	3130	9500	10070	
3800	3230	9800	10370	
FM-X 17/17 N/ FM-X 17 W/17 EW	3900	3330	10100 ¹	10670
	4200	3630	10500 ¹	11070
	4300	3730	10800 ¹	11370
	4400	3830	11100 ¹	11670
	4500	3930	11400 ¹	11970
	4700	4130	11800 ¹	12370

¹ Lift height h₃ for iGo trucks: up to 10000 mm

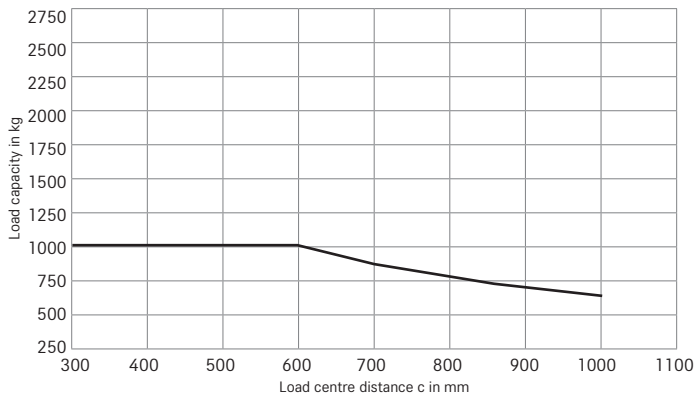
Triplex				
	Height, mast lowered h ₁ in mm	Free lift h ₂ in mm	Lift h ₃ in mm	Height, mast extended h ₄ in mm
FM-X 20/20 N/20 W/20 EW	1950	1380	4080	4650
	2015	1445	4270	4840
	2050	1480	4380	4950
	2200	1630	4830	5400
	2250	1680	4980	5550
	2300	1730	5130	5700
	2400	1830	5430	6000
	2450	1880	5580	6150
	2500	1930	5730	6300
	2600	2030	6030	6600
	2700	2130	6330	6900
	2800	2230	6630	7200
	2900	2330	6930	7500
	3000	2430	7200	7770
	3100	2530	7500	8070
	3200	2630	7800	8370
	3300	2730	8000	8570
	3400	2830	8300	8870
	3450	2880	8450	9020
	3500	2930	8600	9170
3600	3030	8900	9470	
3700	3130	9200	9770	
3800	3230	9500	10070	
3900	3330	9800	10370	
FM-X 20/20 W/20 EW	4000	3430	10100 ¹	10670
	4100	3530	10400 ¹	10970
	4200	3630	10700 ¹	11270
	4300	3730	11000 ¹	11570
	4400	3830	11300 ¹	11870
	4500	3930	11600 ¹	12170
	4650	4080	12050 ¹	12620
	5200	4630	12500 ¹	13070
	5350	4780	13000 ¹	13570
	FM-X 20 HD	5200	4578	12500 ¹
5350		4728	13000 ¹	13622
FM-X 25/25 W/25 EW	1950	1328	4080	4702
	2015	1393	4270	4892
	2050	1428	4380	5002
	2200	1578	4830	5452
	2250	1628	4980	5602
	2300	1678	5130	5752
	2400	1778	5430	6052
	2450	1828	5580	6202
	2500	1878	5730	6352
	2600	1978	6030	6652
	2700	2078	6330	6952
	2800	2178	6630	7252
	2900	2278	6930	7552
	3000	2378	7200	7822
	3100	2478	7500	8122
	3200	2578	7800	8422
	3300	2678	8000	8622
	3400	2778	8300	8922
	3450	2828	8450	9072
	3500	2878	8600	9222
	3600	2978	8900	9522
	3700	3078	9200	9822
	3800	3178	9500	10122
	3900	3278	9800	10422
	4000	3378	10100 ¹	10722
4100	3478	10400 ¹	11022	
4200	3578	10700 ¹	11322	
4300	3678	11000 ¹	11622	
4400	3778	11300 ¹	11922	
4500	3878	11600 ¹	12222	
4650	4028	12050 ¹	12672	

Masts with heights of up to 2450 mm and hydraulic mast side shift have a tilt angle of 1° forward and 3° backward.
Masts with hydraulic side shift have a fork tilt angle of 2° forward and 4° backward or optionally 3° forward and 3° backward.

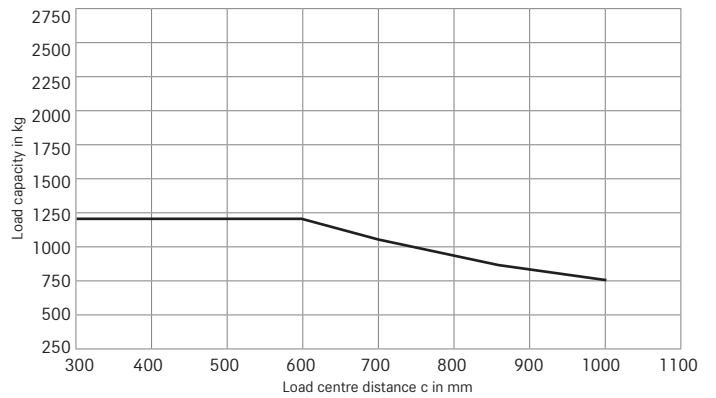
FM-X Driver Seated Reach Truck

Basic Load Capacities

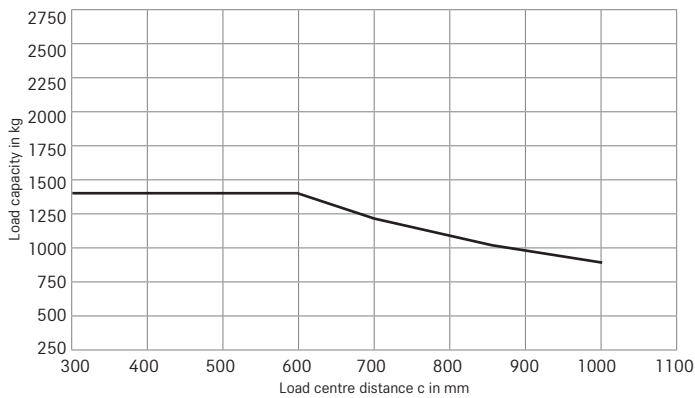
Load capacity FM-X 10/10 N



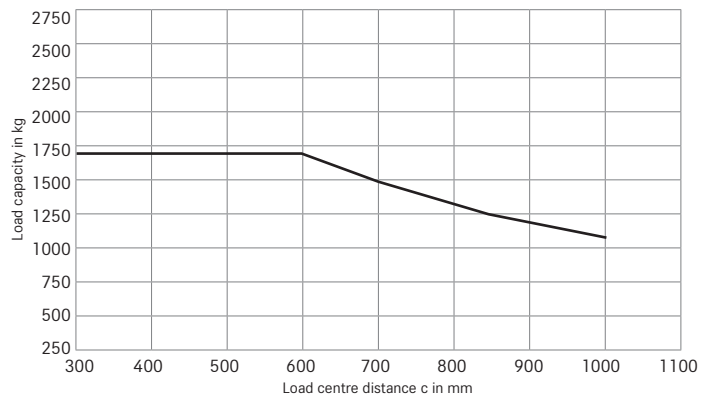
Load capacity FM-X 12/12 N



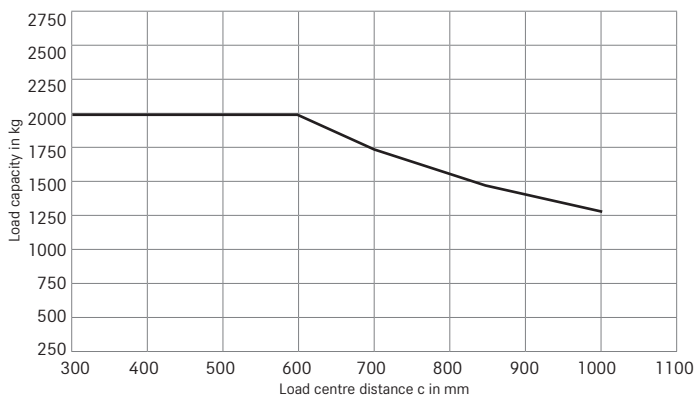
Load capacity FM-X 14/14 N/14 W/14 EW



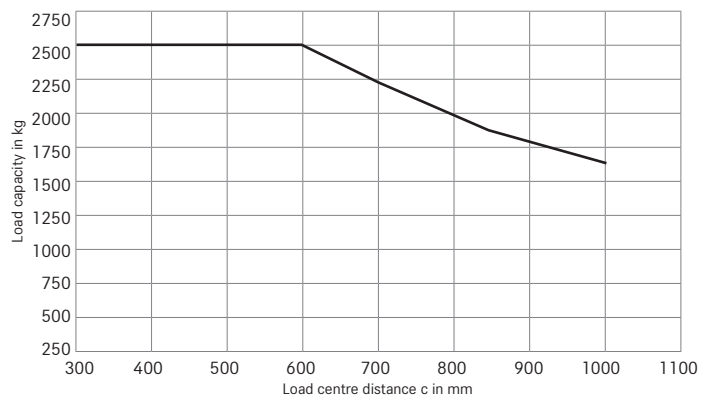
Load capacity FM-X 17/17 N/17 W/17 EW



Load capacity FM-X 20/20 N/20 W/20 EW/20 HD



Load capacity FM-X 25/25 W/25 EW



FM-X Driver Seated Reach Truck Detailed Photos



The unique lateral shifting of the mast and the off-centre placement of the lifting cylinder ensure an unobstructed view of the goods.



The driver's workplace features various equipment options for individual configuration.



Ergonomic, precise and fatigue-free operation and control with the innovative Joystick 4Plus.



Effortless operation of all relevant functions – simply at your fingertips and without changing your grip.



Individual settings for the driver's workplace, such as proportional seat and footplate configuration, ensure ergonomics and comfort.



Everything in view – even upwards. The comfortable reclining seat allows a relaxed view of the goods.

FM-X Driver Seated Reach Truck Top-level precision.

Maximum storage density thanks to a residual load capacity of up to 1,000 kg at a storage height of 13 metres, and 850 kg at a maximum height of 14 metres

Firm stability and high goods turnover thanks to active load stabilisation

Precise ergonomics thanks to individual adjustment options for the driver's workplace



With the FM-X, you are always more than just a fork tip length ahead. It makes your work faster, more efficient, ergonomically sound and safer, thanks to smart assistance systems, impressive residual load capacities, a storage height of up to 14 metres, and a comprehensive ergonomic design for maximum comfort and health-promoting work. Thanks to active load stabilisation, you can start transporting the next load while others are still waiting for the lift mast vibrations to subside. This is because an automatic compensation impulse quickly and effectively stops vibrations at great heights, reducing waiting time at the rack by up to 80 per cent.

A real boost for your goods handling – just like the powerful lithium-ion battery. With straightforward charging and interim charging options, it ensures optimum availability and operational readiness of your FM-X. To keep the driver ready for action, the FM-X also features a comprehensive ergonomic design that allows for relaxed, comfortable and safe working. The footplate, steering wheel and seat can be adjusted to suit the working situation, stature and preferences. Numerous other features, such as an optional reclining driver's seat and the exclusive STILL lateral shifting mast, make the FM-X the ideal warehouse organiser for tasks ranging from operating high racks to long-distance transport and replenishment.

The 'Simply Efficient' factors: Performance attributes as a measure of economic efficiency



Simply easy

- Precision from the very first millimetre – thanks to the optical LED lift height sensor
- Impressive turnover and efficient storage and retrieval: with the Easy Target and Easy Target Plus lift height preselection, you can select shelf levels at the touch of a button
- Precise control of lift functions using optional Joystick 4Plus or Fingertip controls
- Simply ergonomic: fatigue-free working thanks to a cushioned driver's seat and optional reclining seat



Simply powerful

- Unequaled in goods handling and storage density thanks to a storage height of up to 14 metres and residual load capacities of up to 1,000 kg (at a height of 13 metres) or 850 kg (at a height of 14 metres)
- High efficiency even in horizontal goods transport with a maximum travel speed of 14 km/h
- Non-stop power without standstill thanks to high lowering and lifting speeds
- Always available and powerful thanks to state-of-the-art lithium-ion batteries with capacities of up to 930 Ah



Simply safe

- Reduced forklift mast vibrations and less damage to goods due to Active Load Stabilisation (ALS) and OptiSpeed (both optional)
- Optimal visibility plus maximum safety equals maximum efficiency – thanks to the optional armoured glass roof
- See and be seen with the optional STILL Safety Light
- Safe even on tight corners with the optional Curve Speed Control (CSC) and the optional panoramic mirror



Simply flexible

- Smart storage compaction and optimum use of space even in confined areas with the reaching mast
- Custom-fit and comfortable: both cab and driver's workplace can be individually configured
- Suitable for a wide range of application scenarios thanks to multiple chassis variants



Simply connected

- Intelligent fleet management with the innovative self-service solution Smart Portal: driver management, access protection, shock detection, maintenance cycles and much more, bundled and networked via an intuitive user interface
- Easy integration into material flow management systems thanks to MMS provision

FM-X Driver Seated Reach Truck FM-X iGo

Maximum flexibility and precision in load handling thanks to cantilever forks and innovative pallet positioning system

Automation at the highest level: the FM-X iGo has a storage height of up to 10 metres

Incomparably manoeuvrable with a working aisle width of less than 3 metres

Simply intuitive: thanks to the smart plug-and-play solution iGo easy, commissioning and handling are simple and straightforward, and so are adjustments and scaling



STILL iGo – Automation Solutions

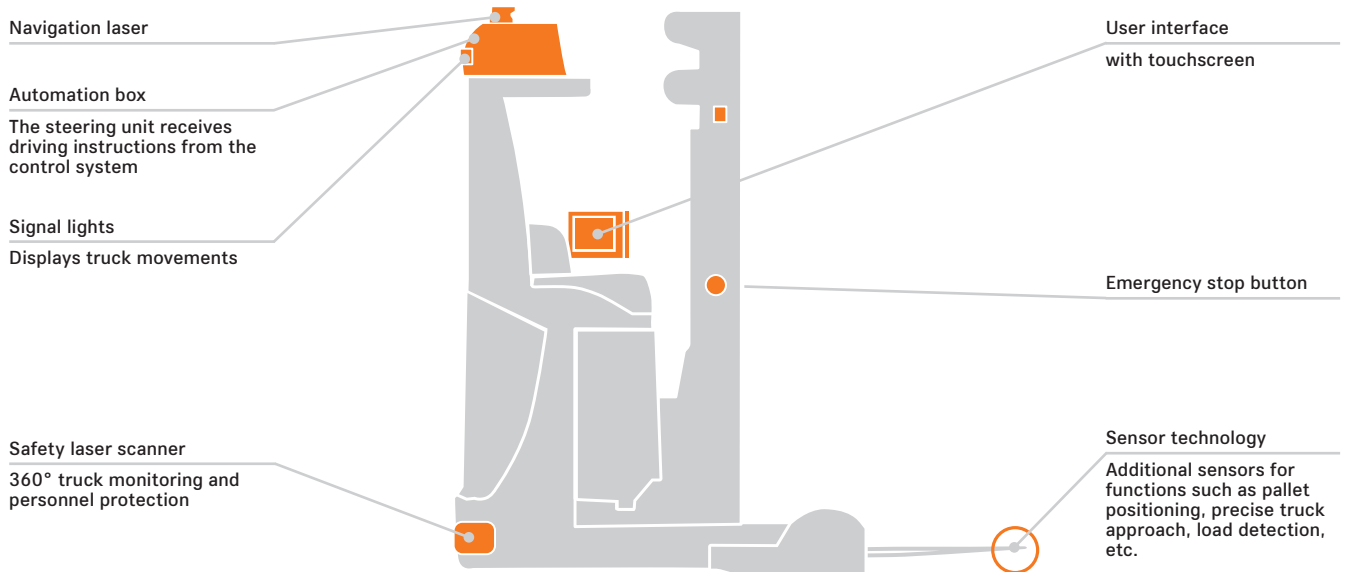
We make automation smart. From flexible plug-and-play solutions (STILL iGo easy) to highly customised system solutions (STILL iGo systems), STILL iGo covers the full range of automation in a scalable manner, tailored precisely to your needs.

iGo easy

Our smart plug-and-play solution STILL iGo easy is the perfect option for anyone who wants to automate individual logistics transport processes with small fleets. iGo easy is quick and easy to implement thanks to its intuitive user interface and flexibility. So, if demand increases or your processes become more complex, you can simply switch to our iGo systems solution at any time.

iGo systems

Do you already have extensive or interlinked logistics processes that you would now like to automate? Then iGo systems is the perfect solution for you. The system can be customised to your needs, and enables trucks to be controlled in perfect, synchronised harmony and integrated into comprehensive logistics processes. Plus, it is your choice whether this covers individual trucks or even entire fleets.



Advantages of automated reach trucks

Automated reach trucks such as the FM-X iGo are a real asset for wide-aisle and block storage, both horizontally and vertically. The FM-X iGo is characterised by optimal safety and reliability for driverless transport over long distances. It also offers decisive advantages for transport tasks that require high levels of precision in challenging conditions: Automated handling increases efficiency and process reliability – for example, when storing and retrieving heavy loads at great heights or in fully automated shuttle systems. Automated reach trucks are therefore the perfect solution for current and future intralogistical challenges.

The following safety features are integrated: a safety laser scanner that detects people and objects in the path of travel; visual and acoustic warning systems (e. g. when changing direction of travel); and an emergency stop button that can be used to bring the forklift truck to an immediate standstill. However, we understand that not every technological innovation is financially feasible for the task at hand. We therefore aim to ensure that you do not get lost in the dense jungle of digital Industry 4.0 products, and offer a mix of technical solutions perfectly suited to your needs.

FM-X Driver Seated Reach Truck
Equipment Variants



	FM-X 10	FM-X 10 N	FM-X 12	FM-X 12 N	FM-X 14/W/EW	FM-X 14 N	FM-X 17/W/EW	FM-X 17 N	FM-X 20/W/EW	FM-X 20 N	FM-X 20 HD	FM-X 25/W/EW	
Driver's seat	Amoured glass overhead guard with headrest	○	○	○	○	○	○	○	○	○	○	○	
	Steering wheel and seat adjustment	●	●	●	●	●	●	●	●	●	●	●	
	Comfortable seat with hydraulic damping and weight adjustment	●	●	●	●	●	●	●	●	●	●	●	
	Comfortable reclining seat	○	—	○	—	○	—	○	—	○	—	○	
	Cushioned driver's seat for optimum comfort on uneven surfaces and when going over bumps	○	—	○	—	○	—	○	—	○	—	○	
	Heated driver's seat	○	○	○	○	○	○	○	○	○	○	○	○
	Leatherette driver's seat	○	○	○	○	○	○	○	○	○	○	○	○
	Proportional adjustment of seat and foot plate	○	—	○	—	○	—	○	—	○	—	○	○
	Joystick operation (hydraulic control system without changing grip)	●	●	●	●	●	●	●	●	●	●	●	●
	Fingertip controls (hydraulic control system with four individual levers)	○	○	○	○	○	○	○	○	○	○	○	○
	Five driver profiles, selected according to operator	●	●	●	●	●	●	●	●	●	●	●	●
	Integrated storage facilities, cup holder	●	●	●	●	●	●	●	●	●	●	●	●
	Panoramic rear-view mirror	●	●	●	●	●	●	●	●	●	●	●	●
	Display: clear display of active operating states	●	●	●	●	●	●	●	●	●	●	●	●
Steering	Fully electric 360° steering	●	●	●	●	●	●	●	●	●	●	●	
	Fully electric 180° steering	○	○	○	○	○	○	○	○	○	○	○	
	Fully electric steering with reverse function	○	○	○	○	○	○	○	○	○	○	○	
	Redundant steering safety system	●	●	●	●	●	●	●	●	●	●	●	
Mast	Triple free view mast with free lift	○	○	○	○	○	○	○	○	○	○	○	
	Hydraulic mast for lateral shifting with mast tilt	●	—	●	—	●	—	●	—	●	—	●	
	Hydraulic sidsifter with fork tilt	○	●	○	—	○	—	○	—	○	—	○	
	Mast reach damping system	●	●	●	●	●	●	●	●	●	●	●	
Hydraulics	Free view fork carriage	●	●	●	●	●	●	●	●	●	●	●	
	Ancillary hydraulics, onefold or twofold	○	○	○	○	○	○	○	○	○	○	○	
	Proportional valve technology for sensitive movements	●	●	●	●	●	●	●	●	●	●	●	
	Individual parametrisation options for hydraulic functions	●	●	●	●	●	●	●	●	●	●	●	
Drives	Multiple hydraulic movements can be controlled simultaneously	●	●	●	●	●	●	●	●	●	●	●	
	Smooth, continuous acceleration to maximum speed	●	●	●	●	●	●	●	●	●	●	●	
	Maintenance-free drives for driving, steering and lifting	●	●	●	●	●	●	●	●	●	●	●	
	Fully enclosed component which is impervious to dirt and dust	●	●	●	●	●	●	●	●	●	●	●	
Brake	Integral current and temperature sensors for function monitoring	●	●	●	●	●	●	●	●	●	●	●	
	Generator braking system	●	●	●	●	●	●	●	●	●	●	●	
	Energy recovery when braking	●	●	●	●	●	●	●	●	●	●	●	
	Hydraulic impeller brake as additional brake	●	●	●	●	●	●	●	●	●	●	●	
Safety and performance	Electromagnetic disc brake as parking brake and emergency stop	●	●	●	●	●	●	●	●	●	●	●	
	PIN code access, keyless, with button	○	○	○	○	○	○	○	○	○	○	○	
	Indicator light	○	○	○	○	○	○	○	○	○	○	○	
	Warning light	○	○	○	○	○	○	○	○	○	○	○	
	Safety Light and Safety Light 4Plus	○	○	○	○	○	○	○	○	○	○	○	
	LED headlights	○	○	○	○	○	○	○	○	○	○	○	
	Overhead guard with Makrolon or mesh grid	○	○	○	○	○	○	○	○	○	○	○	
	Steering angle-dependent speed control	○	○	○	○	○	○	○	○	○	○	○	
	Stroke shut-off for intermediate stroke and/or end stroke limiting	○	○	○	○	○	○	○	○	○	○	○	
	Lift height display	○	○	○	○	○	○	○	○	○	○	○	
	Lift height pre-selection system Easy Target with Easy Target Plus	○	○	○	○	○	○	○	○	○	○	○	
	FleetManager: access authorisation, shock detection, reports	○	○	○	○	○	○	○	○	○	○	○	
Battery system	OptiSpeed: lift height and load-dependent speed regulation	○	○	○	○	○	○	○	○	○	○	○	
	Active vibration damping of the mast	—	—	—	—	● ¹	○	● ¹	○	● ¹	○	● ¹	
	Audible driving warning signal (Digisound)	○	○	○	○	○	○	○	○	○	○	○	
	Maximum safety through iGo automation	○	○	○	○	○	○	○	○	○	○	○	
	Battery changing with crane	●	●	●	●	●	●	●	●	●	●	●	
	Battery changing from the side with roller track	○	○	○	○	○	○	○	○	○	○	○	
Additional equipment	Battery compartment for 420-465 Ah battery	●	●	●	●	●	●	●	—	—	—	—	
	Battery compartment for 480-620 Ah battery	○	○	○	○	○	○	○	○	○	○	○	
	Battery compartment for 600-775 Ah battery	—	—	—	—	○	○	○	○	○	●	●	
	Battery compartment for 720-930 Ah battery	—	—	—	—	—	—	—	○	○	○	○	
	204 Ah STILL Li-Ion battery	○	○	○	○	○	—	○/—/—	—	—	—	—	
	817 Ah STILL Li-Ion battery	○	○	○	○	○	—	—	○	—	—	—	
	Battery transport and changing frame	○	○	○	○	○	○	○	○	○	○	○	
	Various fork lengths	○	○	○	○	○	○	○	○	○	○	○	
	Preparation for data terminal	○	○	○	○	○	○	○	○	○	○	○	
	Automatic fork tilt and sidsift centring at the press of a button	○	○	○	○	○	○	○	○	○	○	○	
Additional equipment	Cold store version	○	○	○	○	○	○	○	○	○	○	○	
	Convenient cold store cab, ISO glazing, heated	○	—	○	—	○	—	○	—	○	—	○	
	Convenient cold store cab, VSG glazing, heated	○	—	○	—	○	—	○	—	○	—	○	
	Load backrest	○	○	○	○	○	○	○	○	○	○	○	
	Overhead guard for drive-in racks	○	○	○	○	○	○	○	○	○	○	○	
	Lateral guide wheels for drive-in operation	○	○	○	○	○	○	○	○	○	○	○	
	Impeller cover	○	○	○	○	○	○	○	○	○	○	○	
	Shift and lowering lock	○	○	○	○	○	○	○	○	○	○	○	
	Prong camera system	○	○	○	○	○	○	○	○	○	○	○	
	Dual-pedal control	○	○	○	○	○	○	○	○	○	○	○	

¹ For fixed mast exceeding 3700 mm in height



STILL GmbH
Berzeliusstr. 10
22113 Hamburg
Germany

Tel.: +49 40 73 39 20 00

Fax: +49 40 73 39 20 01

info@still.de

For further information please visit

www.still.eu

STILL is certified in the following areas: Quality management, occupational safety, environmental protection and energy management.

