

S30T 30T Advantage

Efficient and powerful

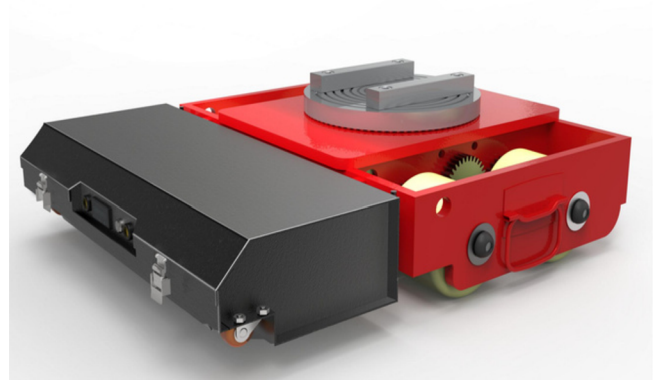
- * High-power dual power motors, working efficiency is 1 times higher than ordinary power motors.
- * Matched with high-grade precision reducer to provide powerful torque output

Reduced maintenance costs

- * Exclusive open structure design shortens routine maintenance time
- * Branded controller with good stability and matching
- * Maintenance-free motor, reducer and battery, heart-saving and durable.

More reliable performance

- * High-capacity lithium battery, battery life of about 8 hours
- * High-strength alloy manganese steel body, lightweight structure, pressure resistance and not deformed



Standard specification

Traveling motor: 2*1500W	Wireless remote	Lithium battery
High-low speed proportional control	Imported alloy material gear drive system	Automatic braking system
High strength manganese steel body	LED lighting	Automotive grade painting process
4×4 drive	Rotatable chucks	Imported polyurethane drive wheels
High quality bearing	Battery Quick Disassembly	Shielding plate

Carrier parameters

Carrier length: 720mm	Carrier width: 650mm	Carrier height: 200mm
Rated traction: 30T	Rated capacity: 15T	Net weight: 130kgs

Optional parameters

Iron box packaging	Industrial remote control	6-wheel drive
Electro-hydraulic jacking function	Auxiliary Drive Wheel	

S50T

50T Advantage

Efficient and powerful

- * High-power dual power motors, working efficiency is 1 times higher than ordinary power motors.
- * Matched with high-grade precision reducer to provide powerful torque output

Reduced maintenance costs

- * Exclusive open structure design shortens routine maintenance time
- * Branded controller with good stability and matching
- * Maintenance-free motor, reducer and battery, heart-saving and durable.



More reliable performance

- * High-capacity lithium battery, battery life of about 8 hours
- * High-strength alloy manganese steel body, lightweight structure, pressure resistance and not deformed

Standard specification

Traveling motor: 2*2400W	Wireless remote	Lithium battery
High-low speed proportional control	Imported alloy material gear drive system	Automatic braking system
High strength manganese steel body	LED lighting	Automotive grade painting process
4×4 drive	Rotatable chucks	Imported polyurethane drive wheels
High quality bearing	Battery Quick Disassembly	Shielding plate

Carrier parameters

Carrier length: 820mm	Carrier width: 750mm	Carrier height: 220mm
Rated traction: 50T	Rated capacity: 25T	Net weight: 180kgs

Optional parameters

Iron box packaging	Industrial remote control	6-wheel drive
Electro-hydraulic jacking function	Auxiliary Drive Wheel	

S80T 80T Advantage

Efficient and powerful

- * High-power dual power motors, working efficiency is 1 times higher than ordinary power motors.
- * Matched with high-grade precision reducer to provide powerful torque output

Reduced maintenance costs

- * Exclusive open structure design shortens routine maintenance time
- * Branded controller with good stability and matching
- * Maintenance-free motor, reducer and battery, heart-saving and durable.



More reliable performance

- * High-capacity lithium battery, battery life of about 8 hours
- * High-strength alloy manganese steel body, lightweight structure, pressure resistance and not deformed

Standard specification

Traveling motor: 2*3000W	Wireless remote	Lithium battery
High-low speed proportional control	Imported alloy material gear drive system	Automatic braking system
High strength manganese steel body	LED lighting	Automotive grade painting process
4×4 drive	Rotatable chucks	Imported polyurethane drive wheels
High quality bearing	Battery Quick Disassembly	Shielding plate

Carrier parameters

Carrier length: 1250mm	Carrier width: 1050mm	Carrier height: 300mm
Rated traction: 80T	Rated capacity: 35T	Net weight: 550kgs

Optional parameters

Iron box packaging	Industrial remote control	6-wheel drive
Electro-hydraulic jacking function	Auxiliary Drive Wheel	

S120T

120T Advantage

Efficient and powerful

- * High-power dual power motors, working efficiency is 1 times higher than ordinary power motors.
- * Matched with high-grade precision reducer to provide powerful torque output

Reduced maintenance costs

- * Exclusive open structure design shortens routine maintenance time
- * Branded controller with good stability and matching
- * Maintenance-free motor, reducer and battery, heart-saving and durable.



More reliable performance

- * High-capacity lithium battery, battery life of about 8 hours
- * High-strength alloy manganese steel body, lightweight structure, pressure resistance and not deformed

Standard specification

Traveling motor: 4*3000W	Wireless remote	Lithium battery
High-low speed proportional control	Imported alloy material gear drive system	Automatic braking system
High strength manganese steel body	LED lighting	Automotive grade painting process
4×4 drive	Rotatable chucks	Imported polyurethane drive wheels
High quality bearing	Battery Quick Disassembly	Shielding plate

Carrier parameters

Carrier length: 1450mm	Carrier width: 1250mm	Carrier height: 320mm
Rated traction: 120T	Rated capacity: 40T	Net weight: 650kgs

Optional parameters

Iron box packaging	Industrial remote control	6-wheel drive
Electro-hydraulic jacking function	Auxiliary Drive Wheel	