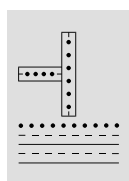
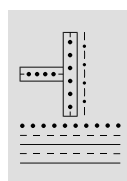
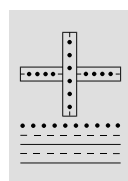


**KD 66 Proline**

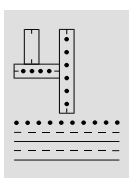
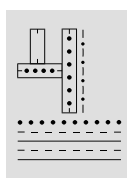
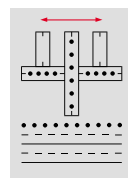
	Feeder					Folding units			
	Flat pile	Pallet	Pallet	Round cont.	Round cont.	Par. fold	1st Cf	2nd Cf	
<b>DCT 2000 Basic control</b>	<b>Tremat</b>	<b>Tremat</b>	<b>Double Tremat</b>		<b>Twin suc. wheel</b>				
Broadsheet format max. W x L (cm)	66 x 104	66 x 104	66 x 104	66 x 128	66 x 128		66 x 52	52 x 33	
Broadsheet format min. W x L (cm)	14 x 18	14 x 18	32 x 18	14 x 18	20 x 18		14 x 10	14 x 10	
Buckle plates with swing deflectors						2/4/6			
Fold length max. (cm)						1st BP 53	52	33	
Fold length min. (cm)						5.5			
Cross fold variants KL, KTL, KZ									
Folding speed max. (m/min)						230	200	200	
Folding speed min. (m/min)						25	25	25	
Number of cycles/h max.	50,000	50,000	50,000	50,000	50,000		30,000	20,000	
Stack height max. (cm)	80	120	120	8	8				
Folding roller diameter (mm)						44	44	44	

**KD 78 Proline**

	Feeder					Folding units				
	Flat pile	Pallet	Pallet	Round cont.	Round cont.	Par. fold	1st Cf	2nd Cf	3rd Cf	
<b>Steuerung DCT 2000 Basic control</b>	<b>Tremat</b>	<b>Tremat</b>	<b>Double Tremat</b>		<b>Twin suc. wheel</b>					
Broadsheet format max. W x L (cm)	78 x 116	78 x 116	78 x 116	78 x 128	78 x 128		78 x 58	58 x 39	39 x 30	
Broadsheet format min. W x L (cm)	14 x 18	14 x 18	32 x 18	14 x 18	20 x 18		14 x 10	14 x 10	14 x 10	
Buckle plates with swing deflectors						2/4/6				
Fold length max. (cm)						1st BP 58	58			
Fold length min. (cm)						5.5				
Cross fold variants KL, KTL, KZ, KLL, KTL, KZ L/R										
Folding speed max. (m/min)						230	200	200	200	
Folding speed min. (m/min)						25	25	25	25	
Number of cycles/h max.	50,000	50,000	50,000	50,000	50,000		30,000	20,000	15,000	
Stack height max. (cm)	80	120	120	8	8					
Folding roller diameter (mm)						44	44	44	44	

**KD 78 Proline with integrated four-directional fold****Cross fold variants****KL****KTL****KZ**

upper buckle plate  
 lower buckle plate  
 slitler shaft  
 cross-fold knife (downward)  
 buckle plate after the 1st cross-fold unit

**KLL****KTL****KZ L/R**

KD 78