

SYSTEM REDOMA®	TECHNICAL INFORMATION	Page Seite	1 (3)
	BLOWER F11 for Separator SE120	No. Nr.	64-448
		Date Datum	03-2007

Description

The blower is made of welded steel consisting of the following parts: Fan housing, fan wheel, electric motor, drive and motor support. The fan housing has an air inlet and outlet with flange. The fan wheel is dynamically balanced, with curved, self-cleaning wings.

Operation

After electric connection of the motor check the rotation of the fan wheel which is indicated by an arrow.

Service and Maintenance

Normally the blower does not require any regular service and maintenance. However, an imbalance of the fan wheel can occur with resulting vibrations, due to sticky material sticking on the wheel wings. If this happens the blower has to be cleaned. Disconnect the pipe on the suction side and remove the lid. If necessary remove the fan wheel, clean it with a steel brush and wash it. Also check the inside of the housing and clean if necessary.

The screen protecting the motor cooling fan should be kept clean from dust. Worn-out parts have to be replaced by new ones.

Lubrication


No lubrication needed.

Technical Data

Total pressure max.	2000 Pa
Max. air volume:	8000 m³/h
Speed of fan wheel at 50 Hz:	approx. 2900 rpm
Speed of fan wheel at 60 Hz:	approx. 2900 rpm
Standard squirrel cage motor:	7.5 kW
Diameter of air outlet:	400 mm
Overall dimensions:	L x W x H = 980x 900x 983 mm

Safety instruction

When servicing the blower always switch off the electric current and indicate on the control panel that repair work is going on.

	TECHNICAL INFORMATION	
	BLOWER F11 for Separator SE120	Page Seite 2 (3)
		No. Nr. 64-448
		Date Datum 03-2007

Faults and remedies

Vibrations (imbalance of fan wheel) • Dirt sticks to the fan wheel. Clean as described under Service and Maintenance. If vibrations still occur after cleaning, remove the fan wheel, bring it to a specialised work shop and check for dynamic balancing. The balancing weight must be welded on the inside of one of the curved wings.

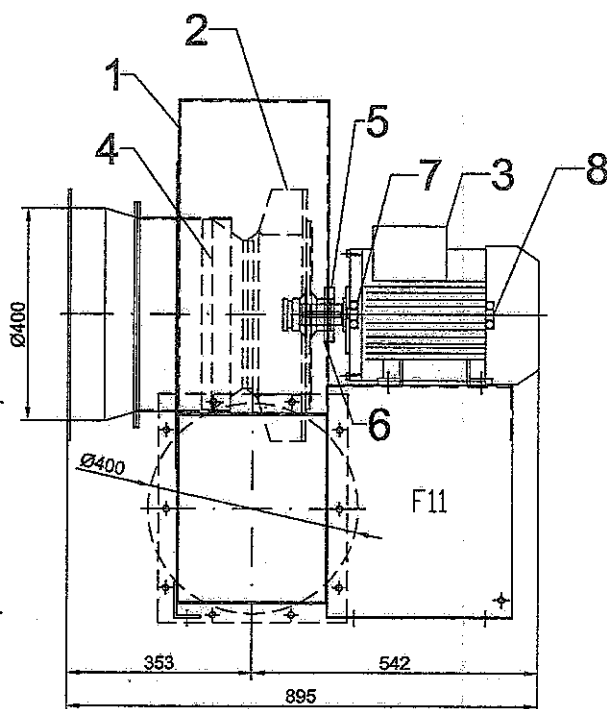
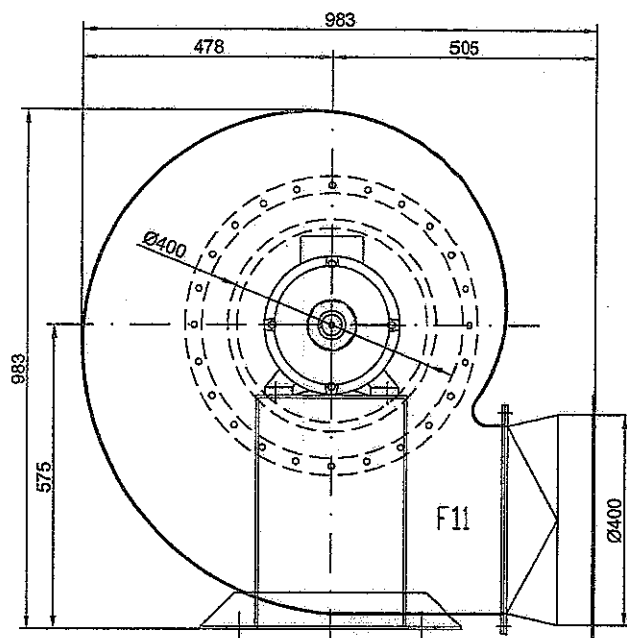
Too high pressure resistance and therefore not enough air • Filter bags are so tight that not enough air can pass through. Shake and if necessary wash or replace them.

Not enough air • Check rotation

**BLOWER F11
for Separator SE120**

No. 64-448
Nr.

Date 03-2007
Datum



Spare parts

Item	Qty	Description
1	1	Housing
2	1	Rotor
3	1	Standard squirrel-cage motor 7.5 kW, 13.8 A approx. 2915 rpm (2-poles), B3.
4	1	Air inlet
5	1	Shaft seal
6	1	Protection plate
7+8	2	Ball bearing 6308 ZZ C3