

## TECHNICAL SPECIFICATIONS

### Crane will have following specifications / equipments:

- 1.1. Control monitor (Cylinder pressures, boom length, boom angles, weight of load, crane PTO hour, crane leveling indicator, and etc)
- 1.2. Crane will have 2 modes: 1- With Greiner Sefiro, 2- Without Greiner Sefiro
- 1.3. Crane will have another 2 modes by software: 1- Fast mode (Factory power), 2- Slow mode (Generator Power)
- 1.4. Crane diagnostic system (Crane will have tracking system by means of modem and sim card)
- 1.5. Active stability control
- 1.6. Remote technical support
- 1.7. Control screen
- 1.8. 4.1 ton rope winch in a single line rope (Rotzler TC5)
- 1.9. Overload control device (Moment control – overload system)
- 1.10. Hydraulically removable counterweight. (Crane will be able to remove all the counterweights by itself. Counterweights will not move through to back or down)
- 1.11. Danfoss proportional main control valve
- 1.12. Scanreco radio control system
- 1.13. Anti two block
- 1.14. The crane will be in accordance with EN 12999 standarts.
- 1.15. Hook in accordance with crane capacity will be equipped.
- 1.16. Automatic balancing for outriggers will be equipped.

### 2. CRANE SPECIFICATIONS :

- 2.1. **Total Lifting Moment** : 315 Tonmetre
- 2.2. **Installation** : The crane will be installed on Greiner Sefiro
- 2.3. **Extensions / Booms** :
  - 2.3.1. **Crane** : 5 sectioned fully hydraulic telescopic boom
  - 2.3.2. **Fly Jib** : 5 sectioned fully hydraulic telescopic boom
  - 2.3.3. **Manual Extensions** : There will be 1 manual extension/boom on fly jib
  - 2.3.4. **Adjustable nose jib** : Adjustable nose jib
  - 2.3.5. **Section** : Octagonal box construction with max. load control and max. strength
  - 2.3.6. **Material** : High-strength steel
- 2.4. **Outriggers (Stabilizers)** : 4 unit hydraulically operated (Outriggers will easily be dismounted)  
Outrigger jack cylinder stroke will be 900 mm. The lowest level of outrigger stamps will be around 200 mm. lower than highest level of Greiner Sefiro.  
Outriggers will be equipped with sensors
  - 2.4.1. **Front** : 2 unit, hydraulically operated, cross step
  - 2.4.2. **Rear** : 2 unit, hydraulically operated, cross step

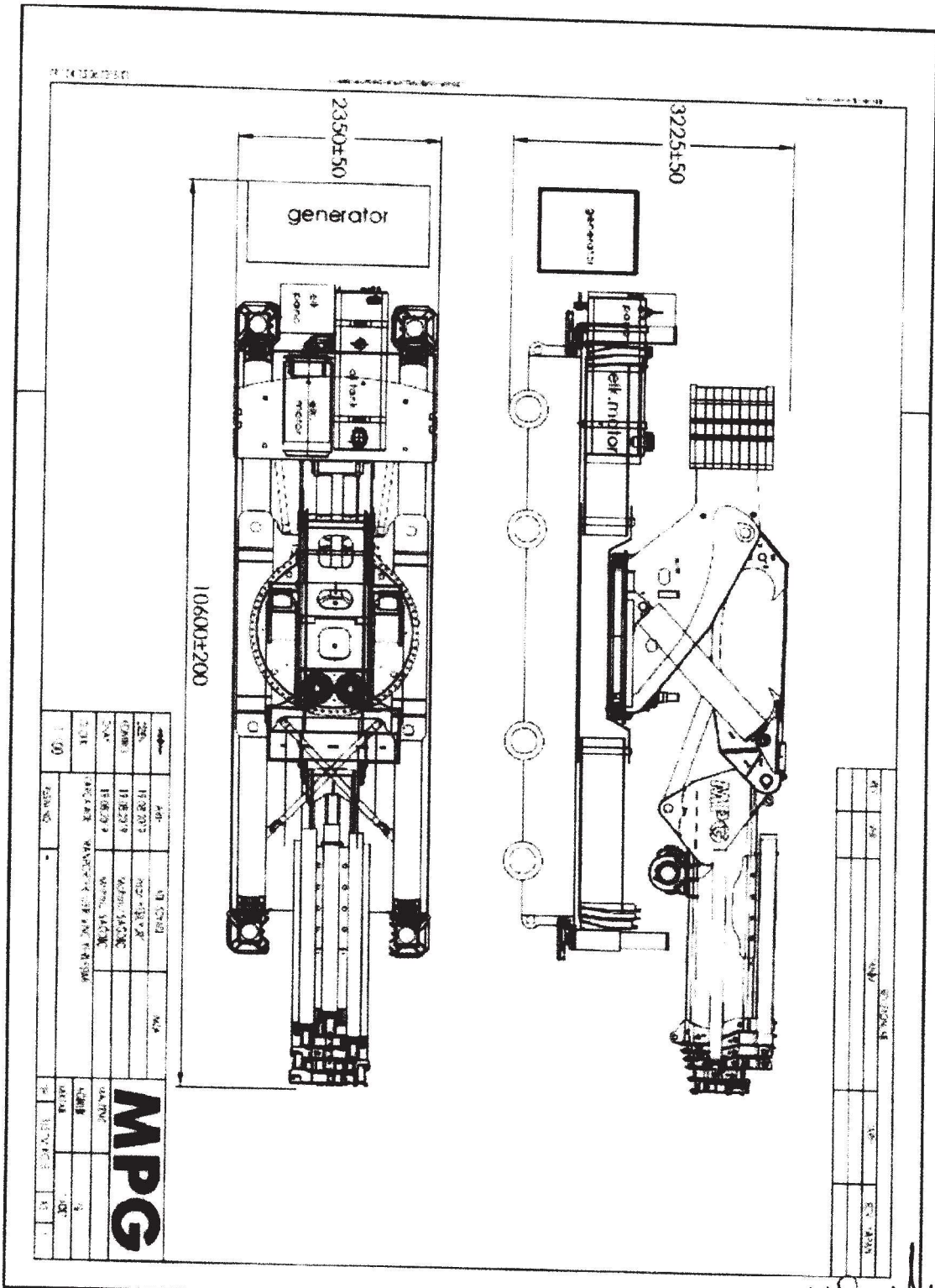
- 2.5. Slewing**
  - 2.5.1. Slewing Angle**
    - : Hydraulic Motor Driven (Hydromotor Slewing)-on slewing bearing
    - : Continuous
- 2.6. Chassis / Subframe**
  - 2.6.1. Material**
    - : High-strength design against bending and buckling
    - : S960 or equivalent steel plate
- 2.7. Hydraulic Cylinders**
  - 2.7.1. Honed Tubes**
    - : Double Acting
    - : DIN 2391-C seamless, cold drawn steel. With tolerance H8, sensitive honed, in stress relieved condition ST 52-3 (BK+S)
    - : 50 micron chromium-plating, With tolerance F7 and carbon steel CK 45
  - 2.7.2. Rots**
    - : DIN 20023/4 SP quality grade, resistant against 1600 BAR burst pressure and 400 BAR operating pressure 4 fibred
- 2.8. Hydraulic Hoses**
  - : Steel drawn, seamless, galvanized with phosphate steel grade = St 37-4
- 2.9. Installation Tubes**
  - : Standard=DIN 1630
- 2.10. Fittings**
  - : Vossform
- 2.11. Hydraulic Pump**
  - : **Bosch Rexroth, Parker or Hawe LS pump**
- 2.12. Control Levers**
  - : **Bosch Rexroth, Danfoss, Hawe or Eaton**
- 2.13. Oil Cooler**
  - : **AKG, Hydac or Parker**
- 2.14. Safety/Over Center Valves**
  - : **Oilcomp, HBS or Bosch Rexroth**
- 2.15. Hydraulic Manual Jack**
  - : Gives the opportunity of operating crane and outriggers manually, in case of stopping hydraulic system for any reason.
- 2.16. Return Filter**
  - : **Hydac or Parker** return-suction filter
- 1.1. Paint**
  - : Two components primer coat (Epoxy) Two component acrylic/ isocyanate based topcoat paint which has permanent glossy, elastic and high mechanical chemical resistance.

## 2. EXPLANATIONS/NOTES :

- This price excludes the price of **Greiner Sefiro**.
- 44 kw power generator will be used for this crane. Power generator will be supplied by Jozef Hermans.
- A suitable electric motor to power generator will be selected by MPG.
- The height of crane will not exceed 2600 mm without Greiner Sefiro
- If the installation will be made in The Netherlands, this price does not include installation costs. Installation costs at the client's expense. (Only technicians' plane tickets, accommodation, etc.)
- Chassis modification costs at the client's expense.
- With respect to this agreement "Force Majeure" situations are limited to the following: earthquake, storm, flood and war.
- This agreement shall be governed and construed by Turkish law and Konya courts shall have exclusive jurisdiction in any disputes regarding this agreement.
- This agreement consists of totally 9 pages with its attachments. This agreement will come into force after signing of both parties.

**Attachment 1**

**Drawing 1**



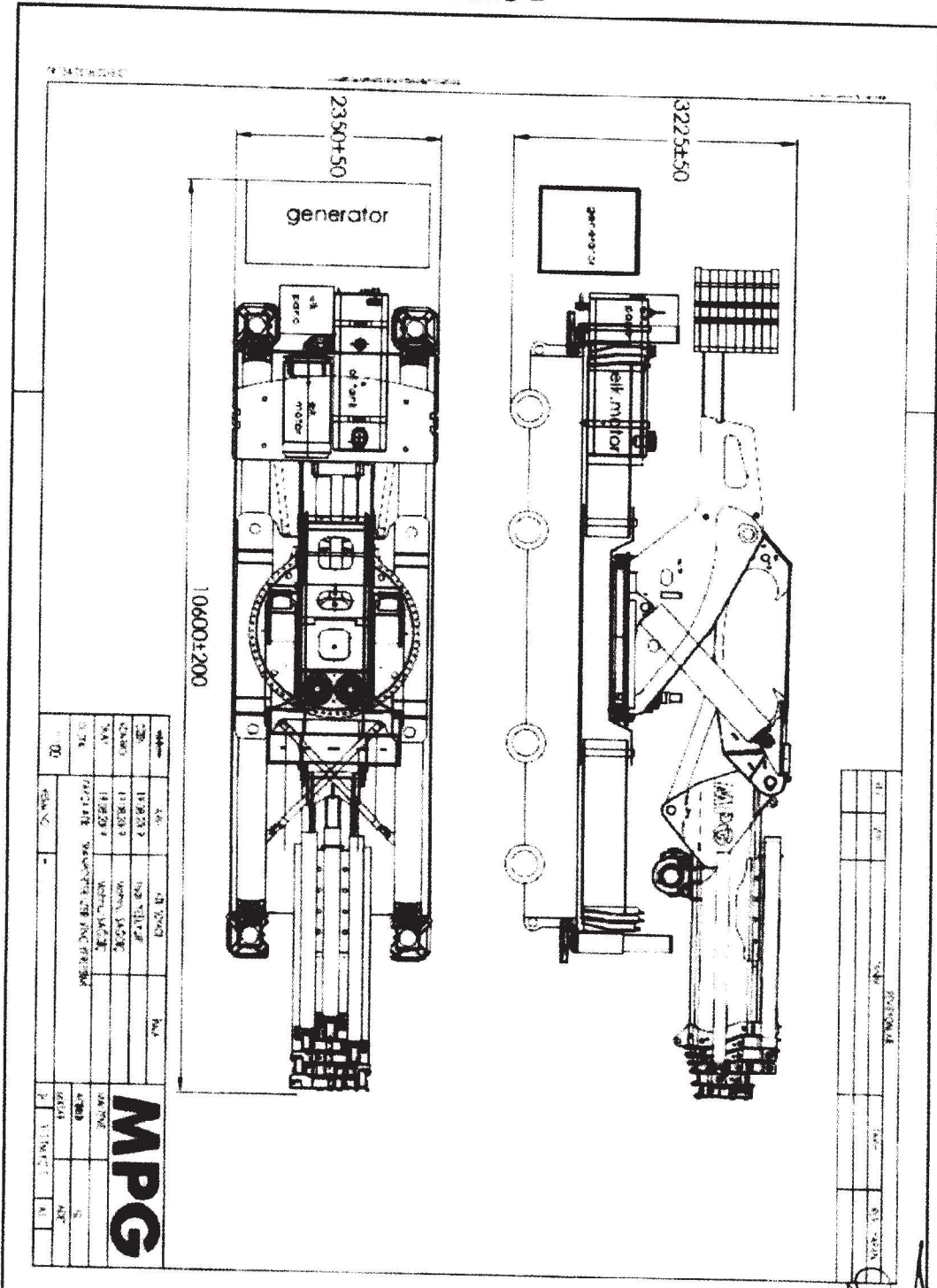
*K*

*mm*

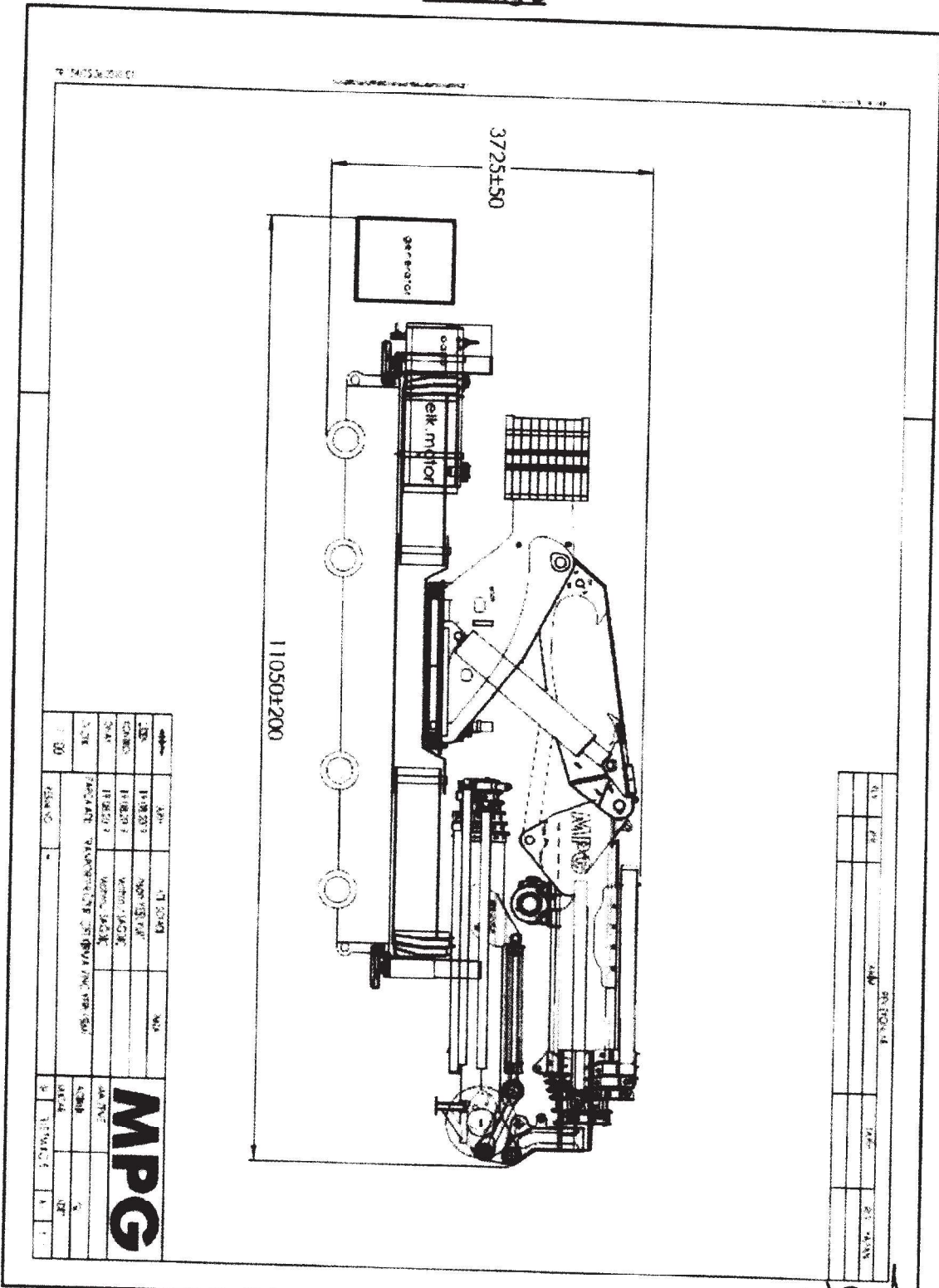


## Attachment 2

## Drawing 2



## Drawing 3



*(Handwritten mark)*

*(Handwritten mark)*