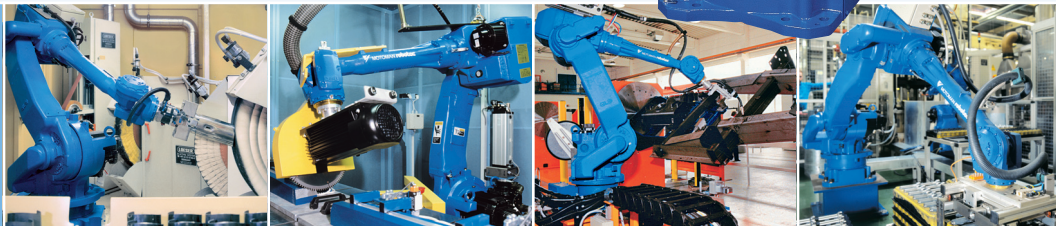
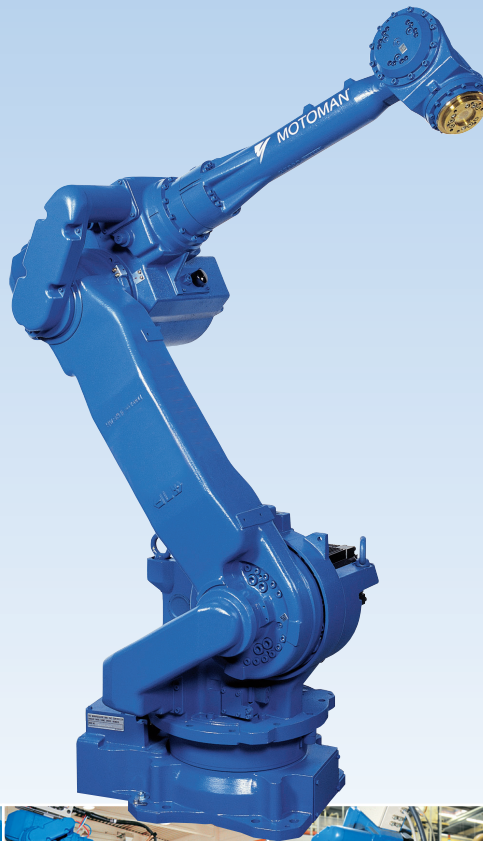
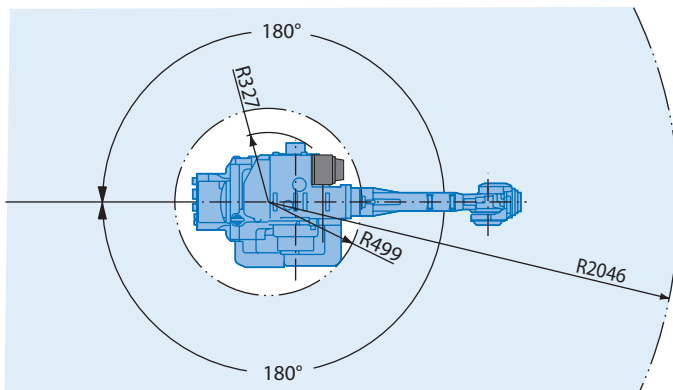
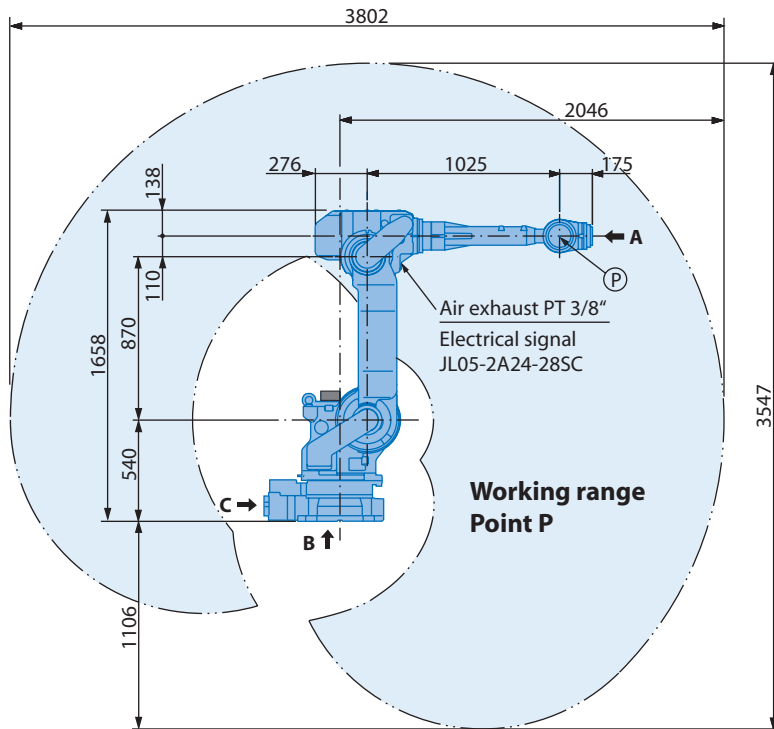
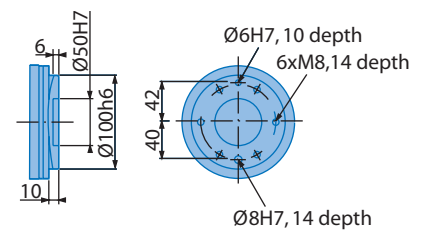


Industrial robot MOTOMAN-UP50N

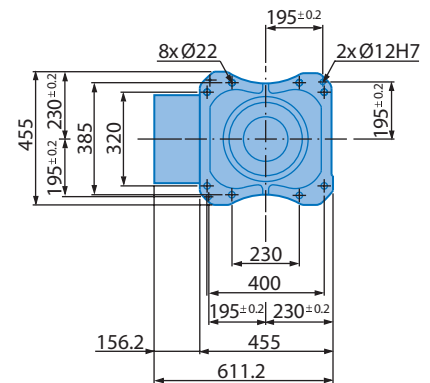




View A



View B



View C

Air inlet PT 3/8"



Electrical signal
JL05-2A24-28PC

Notice

- These dimensions are for reference purposes only. Please request detailed drawings for all design/engineering requirements, at www.motoman.de.
- All dimensions in mm



Technical data may be subject to change without previous notice, UP50N, C-05-2008

Specifications UP50N

Axes	Maximum motion range [°]	Maximum speed [°/sec.]	Allowable moment [Nm]	Allowable moment of inertia [kg/m ²]	Controlled axes	6
S	±180	170	-	-	Max. payload [kg]	50
L	+135/-90	170	-	-	Repet. pos. accuracy [mm]	±0,07
U	+280/-160	170	-	-	Max. working range [mm]	R = 2046
R	±360	250	196	13	Temperature [°C]	0 bis +45
B	±125	250	196	13	Humidity [%]	20 - 80
T	±360	350	127	5,5	Weight [kg]	550
					Power supply, average [KVA]	5,0



Headquarters

Kammerfeldstraße 1
D-85391 Allershausen
Fon 0049-81 66-90-0
Fax 0049-81 66-90-103
info@motoman.de
www.motoman.de

Training centre and sales office Frankfurt

Hauptstraße 185
D-65760 Eschborn
Fon 0049-61 96-777 25-0
Fax 0049-61 96-777 25-39
info@motoman.de
www.motoman.de