



BUFFALO

POWER TO CUT ANYTHING



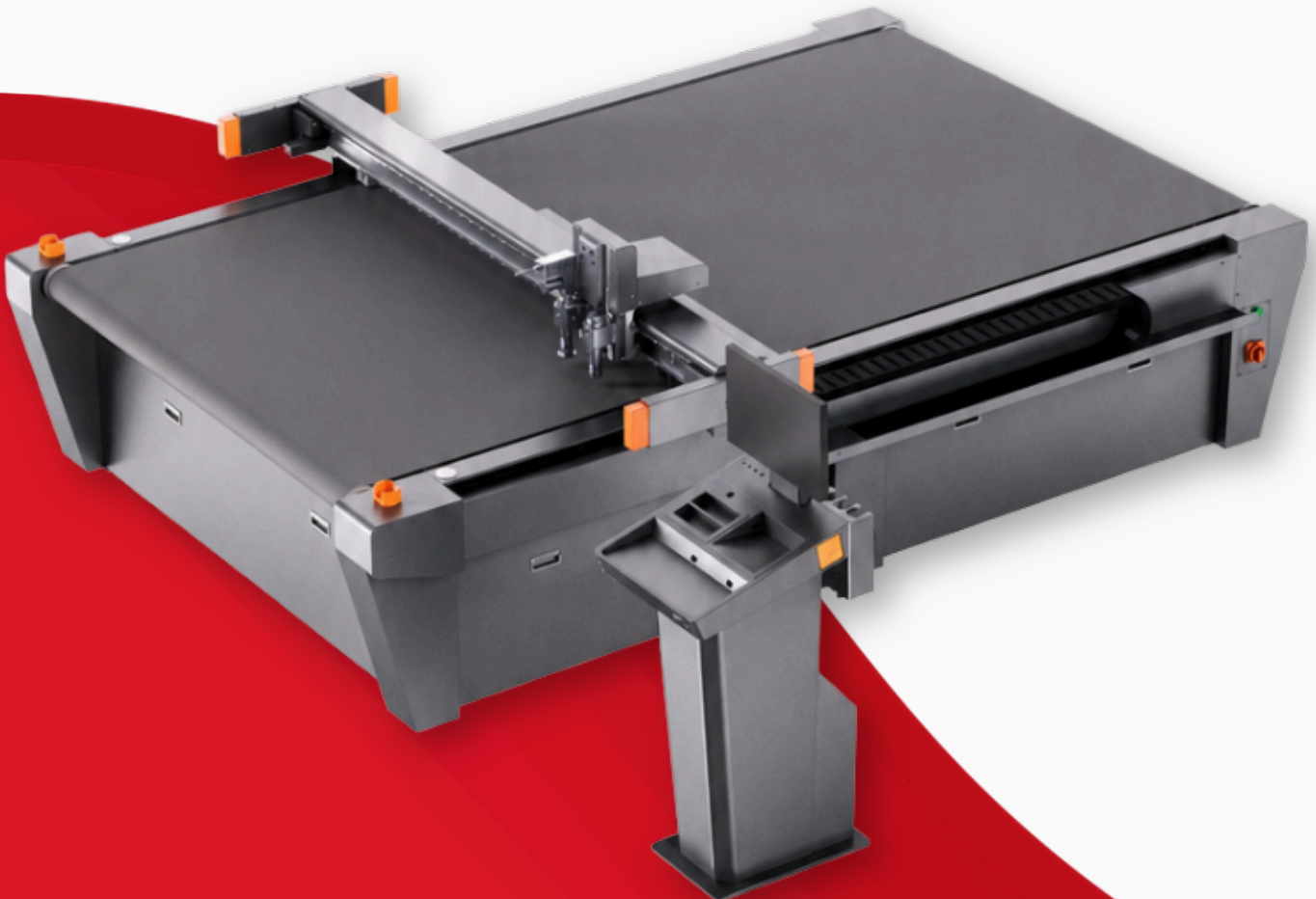
INTELLIGENT
NESTING
SOFTWARE



AUTOMATIC
TOOL SELECTION



REAL-TIME
CUTTING PATH
CONTROL



BUFFALO

IS PARMEL'S FULLY CONFIGURABLE MULTI-MATERIAL CUTTING SYSTEM

A versatile solution developed for manufacturers who work with more than one material and refuse to compromise on precision for any of them.

Engineered to cut any material — textiles, acrylics, foam, and beyond. **BUFFALO is built around your production, not the other way around.**

ONE MACHINE. EVERY MATERIAL. YOUR WAY.

INDUSTRIES

Fashion & Apparel



Automotive Interiors



Upholstered Furniture



Technical Textiles



Aviation & Marine



KEY BENEFITS

- ✓ Cuts virtually any material — textiles, foam, acrylic, cardboard, honeycomb and more
- ✓ Use for many cutting industries and applications without adaptation
- ✓ Fully configured to your needs — you decide the setup
- ✓ Cuts material up to 50 mm thick
- ✓ Imports cutting files from all modern CAD systems (AAMA, ASTM, ISO)
- ✓ Multi-functional tool head — cut, crease, draw and route in one
- ✓ Scalable system configuration
- ✓ Oscillating knife, drag knife and plotting tool included
- ✓ Rolling or fixed tabletop to match your workflow
- ✓ High-resolution servo motion (± 0.01 mm)
- ✓ Fully automatic operation, with manual control available when you need it
- ✓ Optional integrated camera for vision-guided cutting
- ✓ Optional pick-up zone for continuous load and unload
- ✓ Cutting paths are automatically optimized, for speed and quality aspects
- ✓ Full-surface vacuum hold-down keeps every material flat and fixed
- ✓ BUFFALO can be operated by just one worker
- ✓ Infrared safety sensor — responsive and reliable
- ✓ Easy system handling, short training time

REPEATABILITY THAT HOLDS ALL SHIFT

With ± 0.05 mm repeat precision, the thousandth piece comes out identical to the first. No drift, no creeping tolerances, none of the variability that hand cutting introduces as the day wears on.

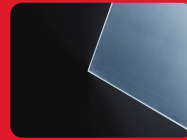
ONE HEAD, EVERY OPERATION

The head holds two separate knife stations plus a plotting pen, and BUFFALO decides for itself which blade to fire. For every cut it automatically selects the tool that delivers the fastest, most precise result. No manual switching. No operator guesswork. No pause between operations.

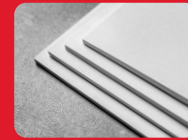
FROM SOFT FOAM TO RIGID PANEL

BUFFALO works through material up to 50 mm thick on a single bed — foam, acrylic, board, honeycomb — held perfectly flat by full-surface vacuum so nothing shifts mid-cut.

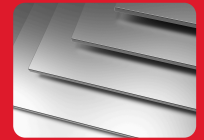
MATERIALS



Acrylic board



PVC foam board



Aluminium-plastic panel



Space board



Magnetic sticker



Fabric and Textile

TOOLS



Electric Oscillating Tool



Electric Foam Cutting Tool



Electric Rotary Tool



Kiss-cut Tool



Router Tool



Centered/Off-centered Drag Knife



Press Cutting Tool



V-CUT Tool For Honeycomb



V-CUT Tool For Grey Board



V-CUT Tool For Rahmen



V-CUT Tool For Cardboard



Creasing Wheel Tool

PRODUCT SPECIFICATIONS

Model	W16L25
Multi-functional Tool Head	Double tool fixing holes, quick insert tool fixing, easy to replace cutting tools, plug and play, set cutting, creasing, drawing, router and other functions in one.
Tools	Electric oscillating tool, drag knife and plotting tool.
Safety Device	Infrared sensor, responsive, safe and reliable.
Max. Cutting Speed	1800mm/s *
Max. Cutting Thickness	50mm *
Repeat Precision	± 0.05 mm *
Cutting Materials	ABS board, PVC board, space board, aluminium-plastic board, fabrics and textiles, PVC foam board, KT board, acrylic, magnetic sticker, self-adhesive, etc.
Material Fixation Mode	Vacuum absorption.
Servo Resolution	± 0.01 mm.
Transmission Mode	Ethernet port.
Drive System	Advanced servo system, imported linear guide, synchronous belt, lead screw.
Rated Capacity	12.4kVA.
Rated Voltage	380V $\pm 10\%$.
Machine Weight	1380KG.
Effective Cutting Size (WxL)	1600mm \times 2500mm.
Machine Size (WxLxH)	2504mm \times 5768mm \times 1330mm.

PLUG AND PLAY

BUFFALO IS BUILT TO GROW WITH YOU.

ADD A MODULE WHEN YOUR WORK DEMANDS IT AND THE MACHINE RECONFIGURES ITSELF AROUND THE UPGRADE



RHINO — LEATHER CUTTING

Add RHINO and the same platform becomes a leather specialist, built on Parmel's heritage as the pioneer of commercial leather cutting — handling natural hides with the precision and material care that leather demands.



ZEBRA — PATTERN MATCHING

Plug in ZEBRA and BUFFALO reads fabric like your most experienced operator. It scans each roll, maps the real pattern flow with every distortion and irregularity, and cuts each piece in perfect match — automatically.



CAMCUT — OVERHEAD VISION

Mount CAMCUT above the bed and BUFFALO cuts to exactly what it sees.

The overhead camera reads printed designs, registration marks and contours, so printed and pre-marked material is cut precisely to the artwork, every time.

EXTEND IT



PICK-UP ZONE EXTENSION

Add a dedicated pick-up zone and BUFFALO cuts on one section while finished parts are unloaded from another — turning stop-start cutting into one continuous, uninterrupted flow.



Wemdingen Strasse 35,
D-86685 Huisheim - Germany



mariana.damaceno@pamel.de



+49 9092 226 5500