

SEMI-AUTOMATIC WRAPPING MACHINE

SPINNY

S 300

S 350



EFFE 3TI
PACKAGING TECHNOLOGIES
Your Products, Our Care



WRAPPING MACHINE WITH MOTORISED PRE-STRETCH SYSTEM. SAVE STRETCH FILM UP TO 400%

MAIN FEATURES

Equipped with motorized pre-stretch which allows a significant saving of film used.

The machine has 10 password-protected programs and 5 pre-installed programs available on request.



Model S350 is equipped with TOUCH SCREEN CONTROL PANEL.

- > The standard model is designed for wrapping pallets with stretch film, having dimensions up to 1200 mm (L) X 800 mm (W), with load capacities of up to 1200 kg.
- > The rotating table is available with diameters of 1500 mm, 1650 mm, 1800 mm and 2200 mm with load capacities up to 2000 kg.
- > The column is available for wrapping pallets with heights of 2100 mm, 2600 mm and 3100 mm.
- > The rotation speed of the table is regulated by an inverter (rotation adjustable from 5 to 10 rpm).

The **motorised pre-stretch** is a special device which allows the best utilization of the stretch film quantity; moreover, it permits to wrap light and unsteady pallets that couldn't be wrapped with different frictioning systems.

The stretch film is supplied in the right quantity by the rollers that are operated by a motor, which is controlled by an electronic system that measures the speed and keeps the film tension constant on the whole pallet's surface.



The motorized pre-stretch system, allows an efficiency of film **up to 300%**

Available on demand on Spinny S300 and Spinny S350 the **double motor pre-stretch**.

The DUAL MOTOR version is designed to let you save even more film, obtaining more economic advantages.

Based on the same principle of the single motor version, with the DUAL MOTOR system, SPINNY S300 offers variable **stretch factor up to 400%!**

To ensure the maximum safety level of our SPINNY series machines, we've placed the film holder and the control panel on opposite sides of the column. This to avoid the user to be near a moving part of the machine.

IMPROVE EFFICIENCY AND SAVE MONEY!



WHY SPINNY?

- > Proven pre-stretch system for significant film savings
- > Perfect and uniform wrapping of all kind of pallets
- > Pallet stability ensured for transport
- > It improves the image of the product compared to manual wrapping
- > Minimum maintenance required
- > Extremely easy installation and use
- > Complete documentation in the buyer's language
- > Warranty up to 3 years
- > Over 20 years of experience in the design and manufacture of packaging machines and lines

Thanks to the rapid installation and ease of use, SPINNY is a pallet wrapping machine that can immediately improve the efficiency of company logistics. Eliminate the annoying, expensive and often dangerous manual wrapping operations, with SPINNY you immediately reach a very high standard of wrapping and stabilization of products on pallets. and, with the pre-stretch system, make a significant saving of consumables and money.

eclectic **SPINNY** **ENDLESS POSSIBILITIES**

Spinny a flexible and easy to customize machine, meets the most different needs. Versions with pallet truck entry, with pneumatic or motorized upper press, in stainless steel, with idle roller conveyors, for doors and windows, or the brand new **s350 datalogger** for the Industry 4.0 ... are just some of the available variants.

CONTACT US TO FIND OUT MORE!



In EFFE3ti we care a lot about innovation and we are committed to the continuous development of products. Safety is a priority therefore all SPINNY S140 models comply with the applicable machinery directive: production guarantee in accordance with health, safety and environment requirements.
SPINNY is an Italian product and is produced in Italy.

TECHNICAL DATA

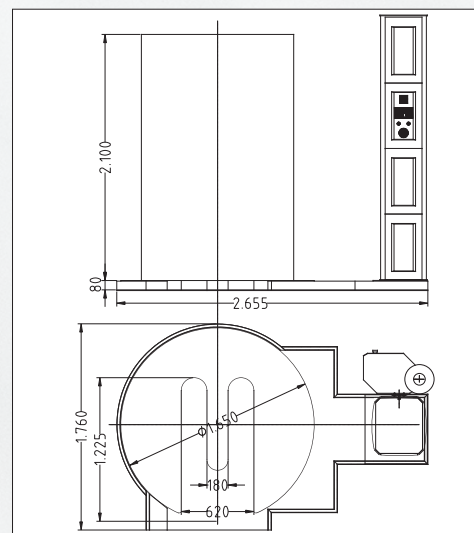
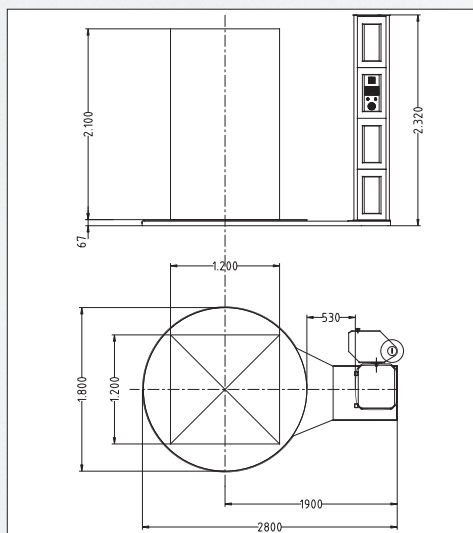
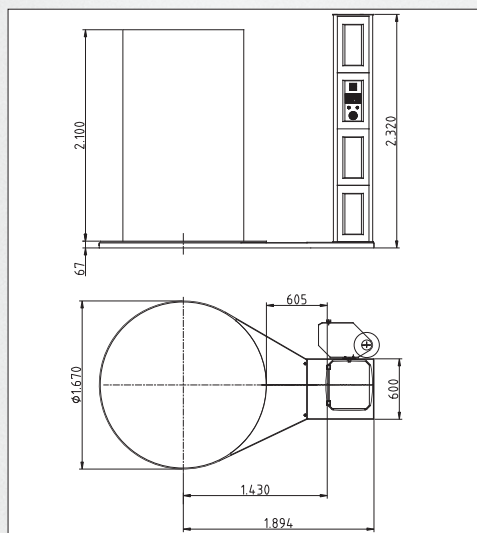
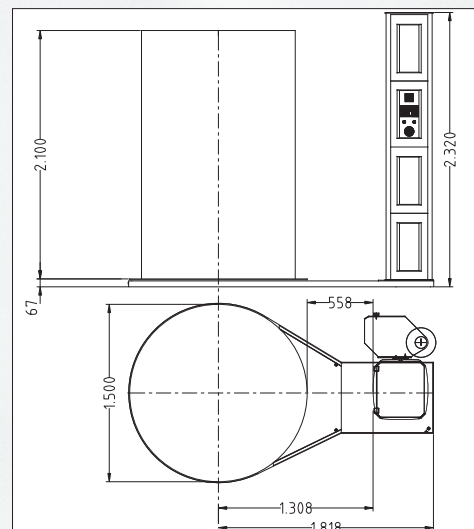
- > Rotating table diameter 1500 mm, 1650 mm, 1800 mm, 2200 mm; capacity up to 2000 kg
- > Distance between column and rotating table 500 mm
- > Wrapping height 2100 mm, 2600 mm, 3100 mm detected by photocell
- > Table rotation regulated by inverter
- > Table rotation stop position controlled by sensor
- > Customisable film carrier speed
- > Film carrier anti-fall device
- > Work cycles controlled by PLC and electronic cardboard

POWER SUPPLY

- > Tension: 230 V single phase
On demand, 400-415 V triple phase $\pm 10\%$
- > Frequency: 50 Hz
- > Installed power: 1.3 kW
- > Auxiliary energy supply: 24 V DC

FILM (LLDPE) AND COIL CHARACTERISTICS

- > Thickness: $12 \div 23 \mu\text{m}$
- > Advised thickness: $20 \mu\text{m}$
- > Internal coil diameter: 76 mm
- > Height: 500 mm
- > Maximum film roll weight: 16 kg
- > Maximum external coil diameter: 250 mm



You Tube



www.effe3ti.com

www.youtube.com/effe3ti

www.facebook.com/effe3ti

linkedin.com/company/effe3ti-srl

