

Baler Bollegraaf, type HBC 60 A, 60 t pressing force, yoc 2000, operating hours 32,169 h, drive power 45 kW, with chain belt conveyt and wire stations



For sale is a complete baling system consisting of conveyor technology with personnel protection system, baling press, bale chute and wire stations.

For sale is a complete baling system consisting of conveyor technology with personnel protection system, baling press, bale chute and wire stations.

Technical data baler:

Manufacturer Bollegraaf Recycling Machinery B.V.

Typ HBC 60A

Year of construction 2000

Hours of operation 32,169 hours, stand November 2024

Press power main press 60 tons

Press power of pre-press max. 25 tons

Feed channel 1,320 x 1,100 mm

Theoretic cycle time 18 sec.

Bale size 1,100 x 720 mm, lenght variable

Driving motor 45 kW

Connected load 60 kW

Tying system 5-fold vertical

Throughput rate at a

bulk weight of 30 kg/cbm approx. 5,5 tons/hour

bulk weight of 50 kg/cbm approx. 10 tons/hour

bulk weight of 100 kg/cbm approx. 16 tons/hour

Bale weight 400 up to 750 kg, depends on material

SPS controller Telemecanique TSX Micro

Machine weight baler approx. 24 tons

Scope of delivery:

1 piece chain belt conveyor with personnel protection system

1 Bollegraaf HBC 60A baler with whirling unit

Baler Bollegraaf, type HBC 60 A, 60 t pressing force, yoc 2000, operating hours 32,169 h, drive power 45 kW, with chain belt conveyt and wire stations

- 1 maintenance platform with access ladder
- 1 bale chute
- 2 wire stations with deflection rollers for 10 wire reel stands (without wire)

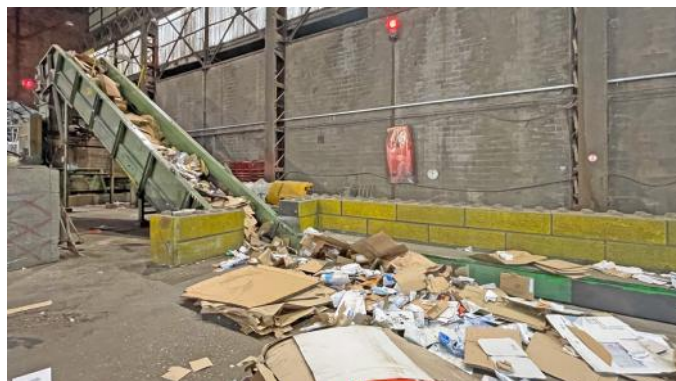
Comments:

The plant is expected to remain in operation until March / April 2025. The documentation (Manual, CE, electr./hydr.-drawings), are completely available. Inspections are possible after agreement. We will not assume liability for the given technical data and possible errors.

Baler Bollegraaf, type HBC 60 A, 60 t pressing force, yoc 2000, operating hours 32,169 h, drive power 45 kW, with chain belt conveyt and wire stations



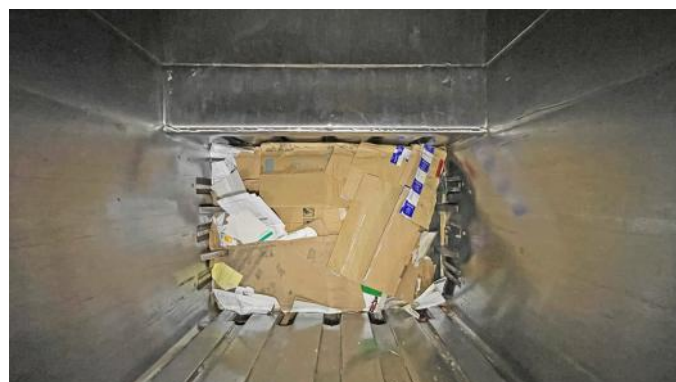
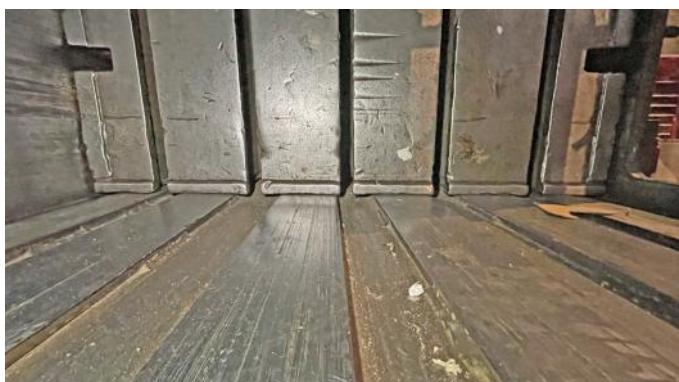
Baler Bollegraaf, type HBC 60 A, 60 t pressing force, yoc 2000, operating hours 32,169 h, drive power 45 kW, with chain belt conveyt and wire stations



Baler Bollegraaf, type HBC 60 A, 60 t pressing force, yoc 2000, operating hours 32,169 h, drive power 45 kW, with chain belt conveyt and wire stations



Baler Bollegraaf, type HBC 60 A, 60 t pressing force, yoc 2000, operating hours 32,169 h, drive power 45 kW, with chain belt conveyt and wire stations



Baler Bollegraaf, type HBC 60 A, 60 t pressing force, yoc 2000, operating hours 32,169 h, drive power 45 kW, with chain belt conveyt and wire stations



Baler Bollegraaf, type HBC 60 A, 60 t pressing force, yoc 2000, operating hours 32,169 h, drive power 45 kW, with chain belt conveyt and wire stations

