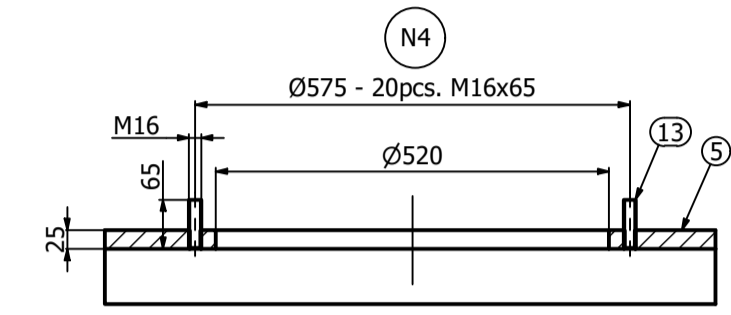
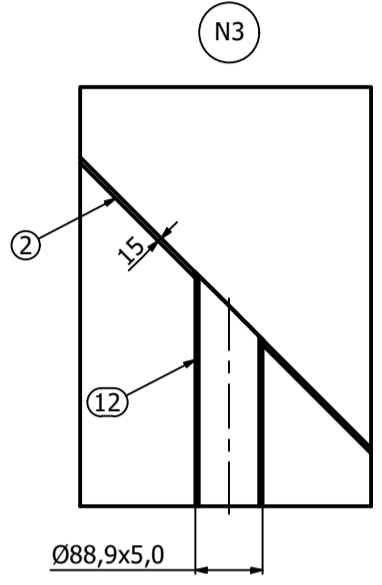
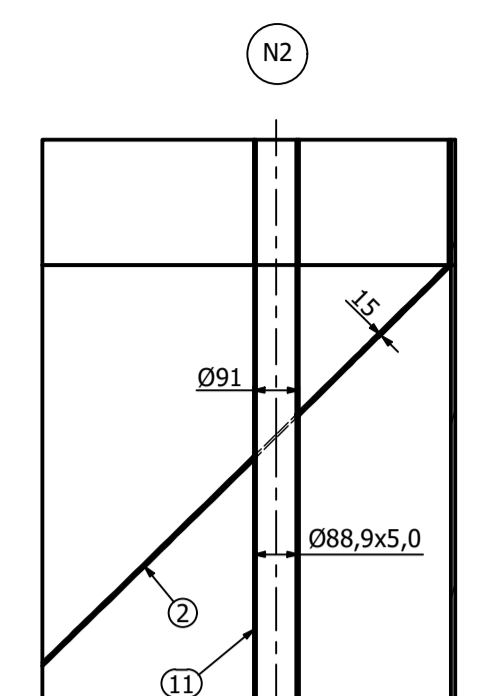
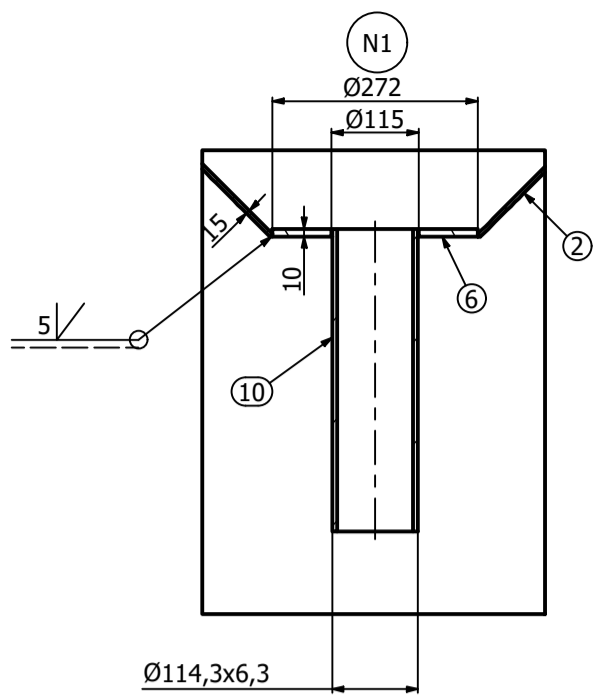
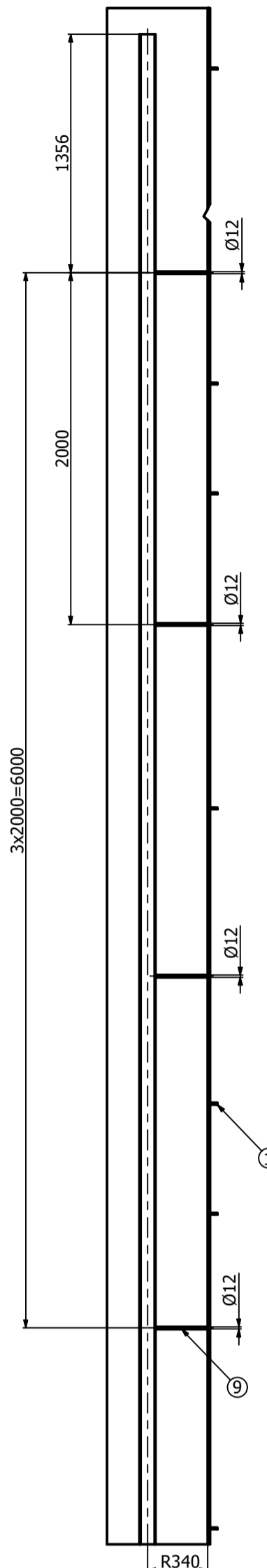
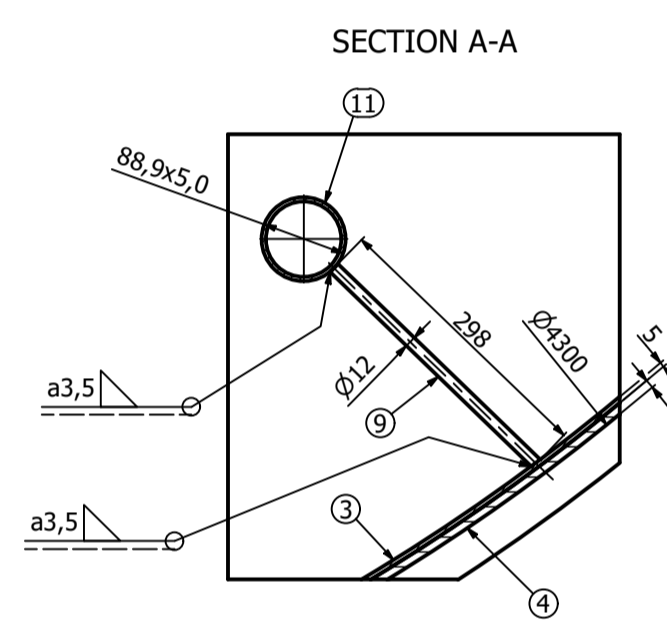
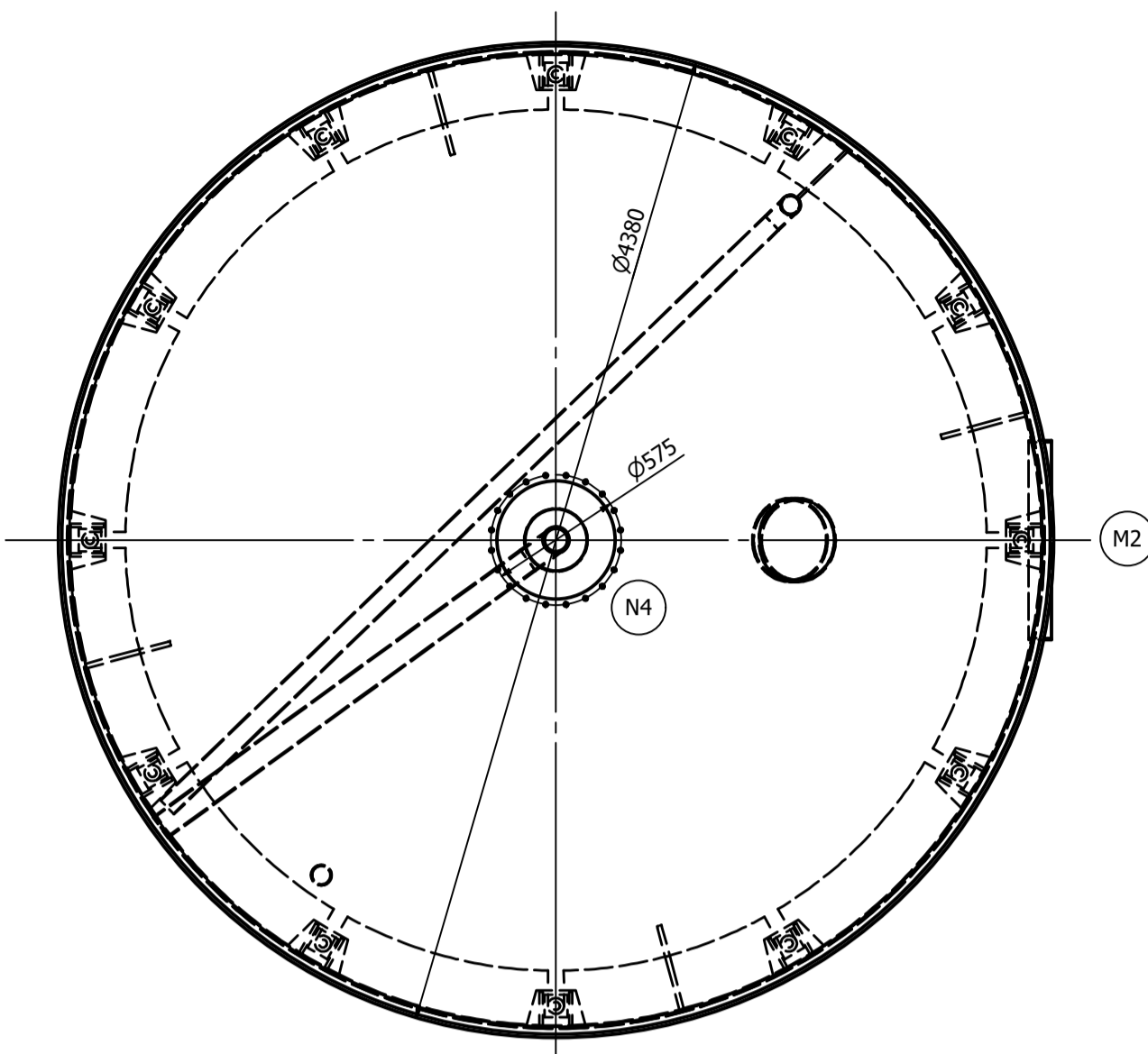
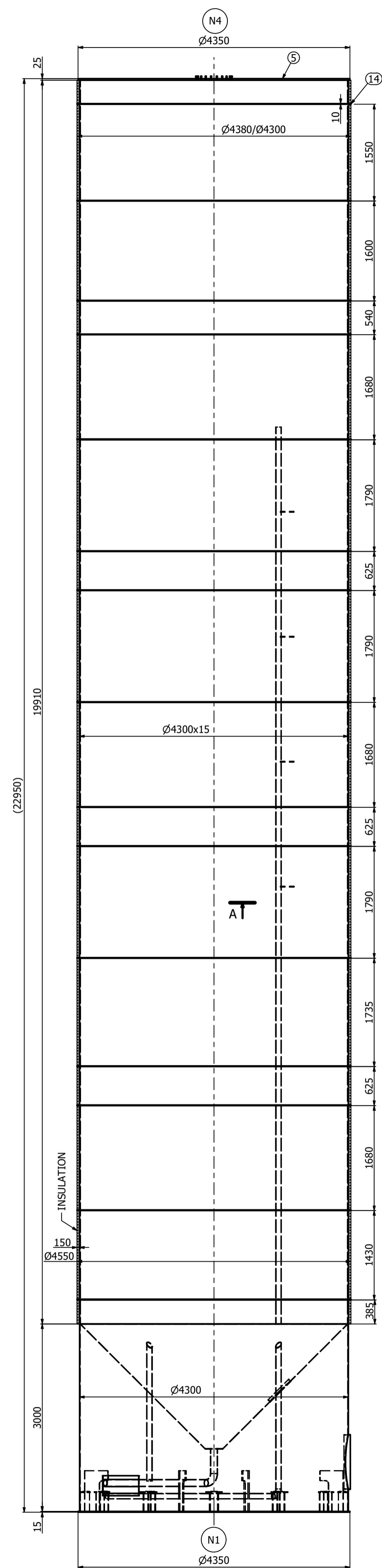
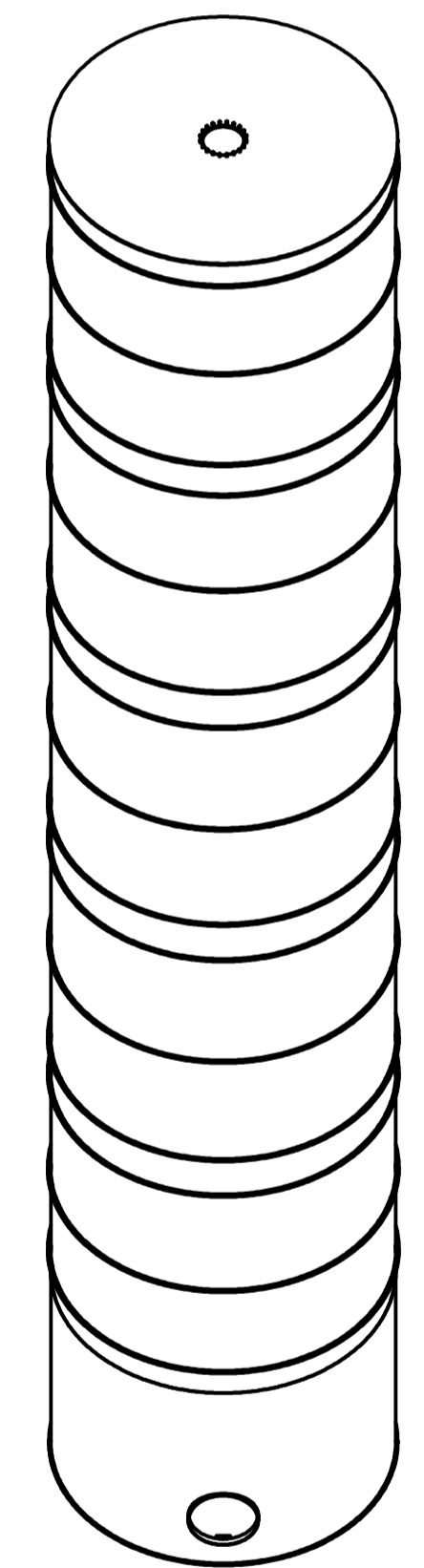
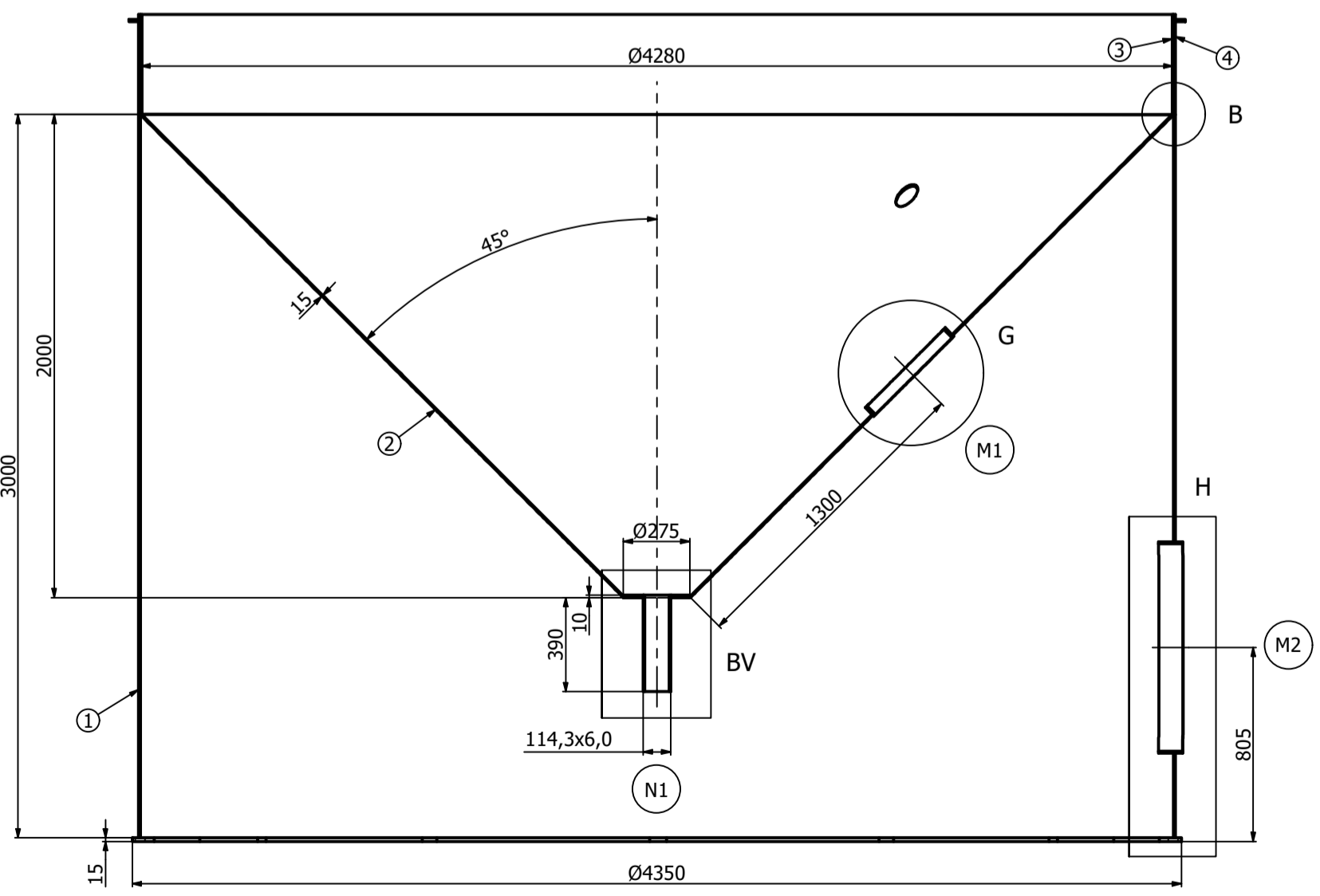
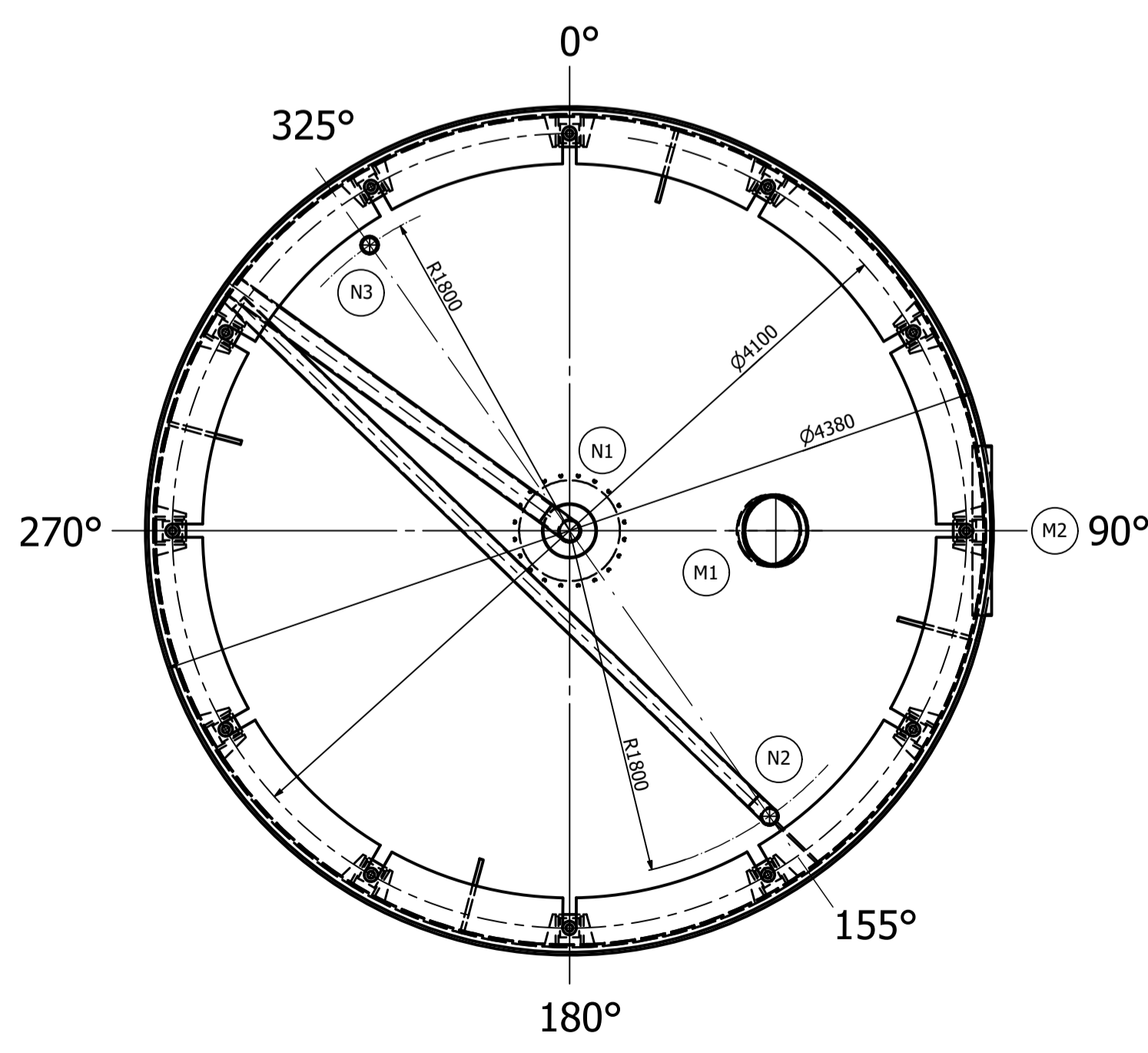
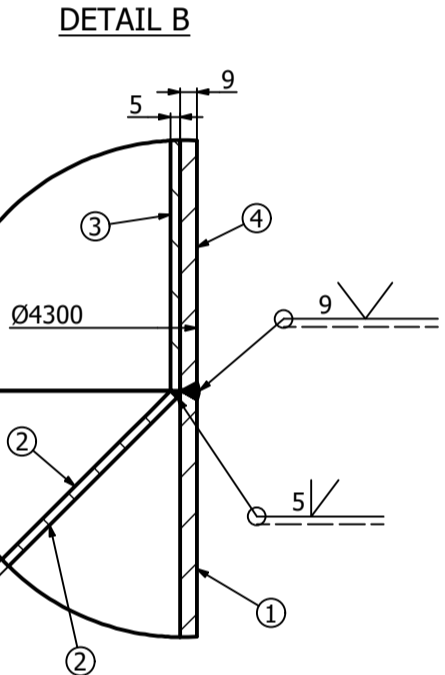
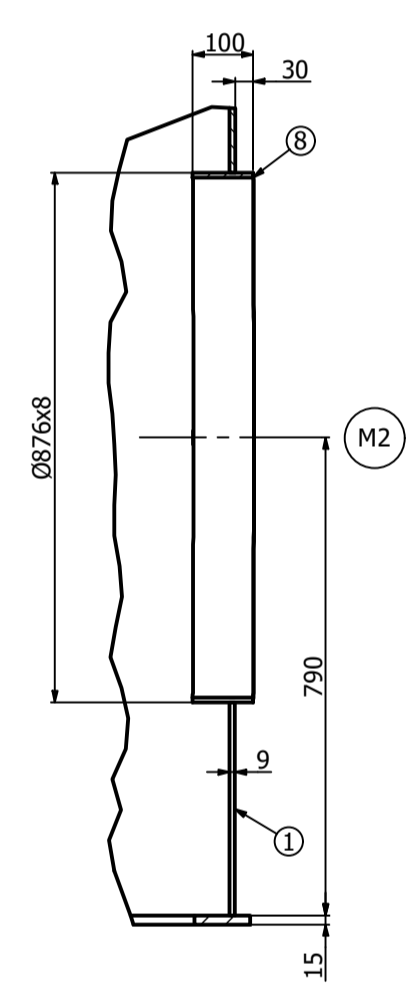
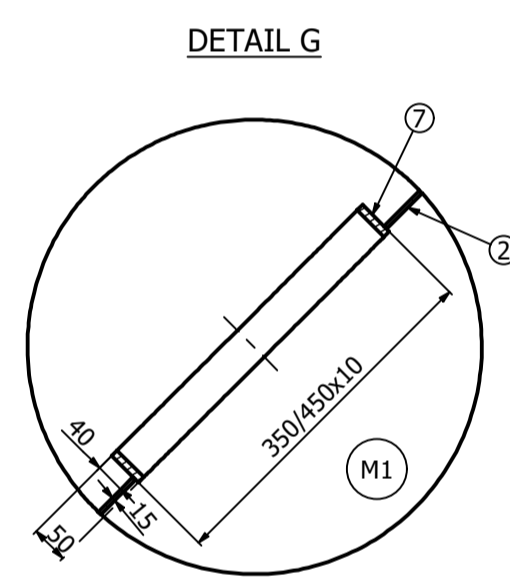


TECHNICAL DATA			
DESCRIPTION	UNIT	SHELL	
1 MEDIUM	-	-	-
2 OPERATING PRESSURE	bar(g)	HYDROSTATIC	-
3 DESIGN PRESSURE	bar(g)	0,9	-
4 TEST PRESSURE	bar(g)	1,2	-
5 TEST MEDIUM	-	WATER	-
6 OPERATING TEMPERATURE	°C	-2 / +70	-
7 DESIGN TEMPERATURE	°C	-	-
8 CORROSION ALLOWANCE: 1. shell / 2. bottom conus	mm	1,5 / 1,5	-
9 CAPACITY	m ³	250,0	-
10 SURFACE	m ²	-	-
11 TEST METHOD	-	HYDRAULIC	-
12 MEDIUM DENSITY	kg/m ³	max. 1000	-
13 EMPTY APPARATUS	kg	37741	-
14 DURING THE TEST	kg	287741	-
15 INSULATION	mm	150 (POLYURETHANE FOAM) / ALUMINIUM SHELL	-
16 INSULATION	mm	Breakthrough 2019/2020 - modernization of the tank; sandblasting bottom shell, supplementing the insulation on the shell and foaming the conus with polyurethane foam	-

NOZZLE TABLE				
Króciec	DN PN	Quantity Type/Face	Orientation	Designation
N1	100	1	CL	Output
N2	80	1	155°	Technological
N3	80	1	325°	Technological
N4	Ø520	1	CL	Agitator
M1	350/450	1	90°	Manhole
M2	Ø876	1	90°	Manhole



SZCZEGÓŁ H



Pos.	DESCRIPTION	Q-TY	TYTUŁ	MATERIAŁ	WYMIAR	WYKONANIE	STANDARD	PROJEKT	STANDARD
14	Ring Ø4380/Ø4300x10	15	626,0	S235JR	EN 10025-2	-	-	-	-
13	Threaded rod M16x65	20	2,0	A2-70	EN 10025-2	-	-	-	-
12	Pipe Ø88,9x5,0	1	-	AISI21	EN 10216	-	-	-	-
11	Pipe Ø88,9x5,0	1	-	AISI21	EN 10216	-	-	-	-
10	Pipe Ø114,3x6,3	1	-	AISI21	EN 10216	-	-	-	-
9	Rod Ø12 L=298	1	63,2	S235JR	EN 10025-2	-	-	-	-
8	Pipe Ø876x8 L=100	1	17,1	S235JR	EN 10025-2	-	-	-	-
7	Pipe - Ø350/Ø450x10 H=50	1	5,0	AISI21	EN 10025-2	-	-	-	-
6	Flange Ø272/Ø115x10	1	3,7	AISI21	EN 10025-2	-	-	-	-
5	Cover Ø4250/Ø520x25	1	2874,0	AISI21	EN 10025-2	-	-	-	-
4	Shell outside Ø4300x9 L=19910	1	18962,0	S235JR	EN 10025-2	-	-	-	-
3	Shell inside Ø4282x5 L=19910	1	10700,0	AISI21	EN 10025-2	-	-	-	-
2	Bottom conus #15 (Ø4280/Ø275 H=2000)	1	802,0	AISI21	EN 10025-2	-	-	-	-
1	Tank support	1	3505,9	S235JR	EN 10025-2	-	-	-	-

Client: **Agrotex** Project name: **Dokumentation as-built** Project No.: **-**

Equipment Tag: **Tank V=250m³** Scale/Size: **A1**

Date: **February 2021** Rev.: **0** Sheet: **1/2** Made by: **Dominik Murek** MASS: **37741**

Checked by: **Krzysztof Kościuski** Drawing No.: **06.0063.00**