

X34129: 3300-2150R-65

Final

3300

Electric dosing motor

Electric dosing motor 2k

MACHINE-TYPE	3300-2150R	65	
CLAMPING-UNIT			
Holding force	3630		kN
Clamping force	3300		kN
Opening force (0 to 10 mm)	184		kN
Opening stroke (max.)	620		mm
Mould diameter (min.)	375		mm
Max. mouldweight ***)	3000		kg
Max. daylight	1240		mm
Mouldheight			
- min./max.	200-620		mm
Distance between tie bars	630x630		mm
Tie bar diameter	120		mm
Ejector force			kN
Ejector stroke (max.)			mm
Dry cycle time (Euromap 6 - 2007)	1.4 (441 mm)		s
Weight clamping-unit	10.6		kg*10 ³
INJECTION UNIT			
Screw	A	A	
Screw diameter	45	25	mm
Screw L/D ratio	23.1	20	
Screwtype	PE2	PP	
Injection pressure (max.) **)	2100	2200	bar
Screw stroke (max.)	170	90	mm
Calculated swept volume (max.)	270	44	cm ³
Shot weight PS (max.)	257	42	g
Injection rate (max.)	2264	491	cm ³ /s
Plasticizing capacity PE	37	5	g/s 1)
(PE-II screw)	47	12	kg/h 1)
Heating capacity	31	5	kW
Heating zones	6	5	
Screwdrive	64	6.8	kW
Screw speed (max.)	373-(431)*	465-(465)*	min-1
Screw torque	1638-(1417)*	140-(140)*	Nm
Nozzle contact force	71	54	kN
Nozzle stroke (max.)	600	200	mm
Rating of electromotor	55		kW
Noise level ****)	74		dBa
Oil reservoir capacity (initial charge)	675-(1E VULLING HYDR OLIE)		l
Weight injection-unit	5.0		kg*10 ³
Controller	IPC525		

1) Depending on proces conditions and max. attainable screw-speed

()* High number of revolutions only possible with reduced torque (value between brackets)

***) At 300 degrees C.

****) 2/3 of the weight on fixed platen

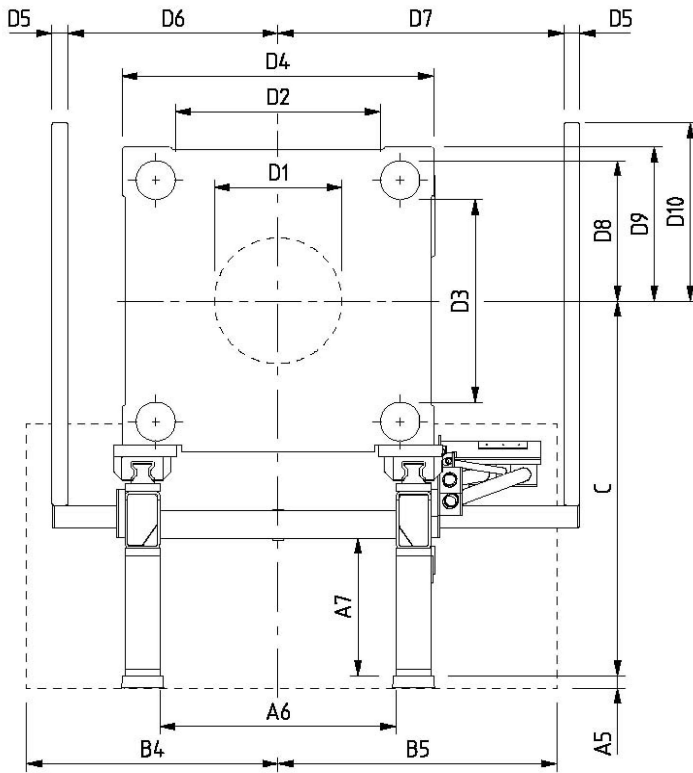
*****) According "noise test code" NEN-EN 201 annex K, measurements according ISO 4871 and ISO 11202.

Preliminary information, subject to modifications

Values on the leaflet may be influenced by options and customer wishes

Produced in conformity with ISO 9001, CE approved

3300



A	: 3516	mm
A1	: 575	mm
A2	: 800	mm
A3	: 30	mm
A4	: -	mm
A5	: 65	mm
A6	: 730	mm
A7	: 650	mm
A8	: -	mm
A9	: -	mm
A10	: -	mm
B	: 3976	mm
B1	: 838	mm
B2	: 893	mm
B3	: 680	mm
B4	: 844	mm
B5	: 995	mm
C	: 1450	mm
D1	: 375	mm
D2	: 630	mm
D3	: 630	mm
D4	: 980	mm
D5	: 115	mm
D6	: 670	mm
D7	: 920	mm
D8	: 435	mm
D9	: 485	mm
D10	: 528	mm
D11	: -	mm
S	: 620	mm
Hmin	: 200	mm
Hmax	: 620	mm

