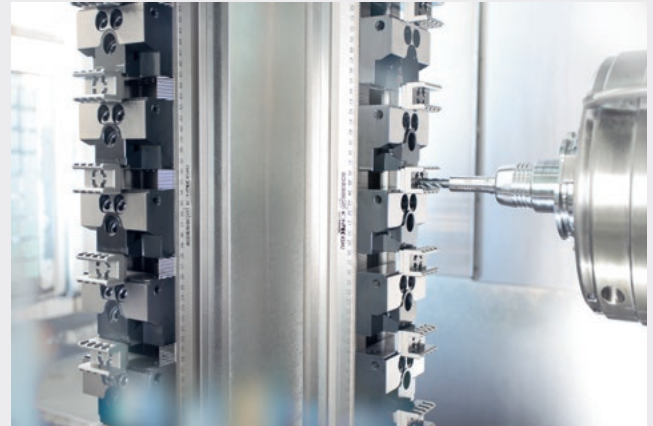


KONTEC KSM2

**Innovative multiple clamping
system**

Flexible clamping rails with high part density and jaw quick-change system as an absolute all-rounder in workpiece clamping

Absolute flexibility with high part density – this is exactly what the KONTEC KSM2 multiple clamping system offers. A wide-ranging modular system of combinable clamping rails, system and top jaws as well as an extensive range of accessories make this system an all-rounder in workpiece clamping. With an innovative jaw quick-change, individual jaws can be inserted and removed as required – with just one wrench – drastically reducing set-up time. The very high load density and flexibility make this clamping device an absolute productivity booster.

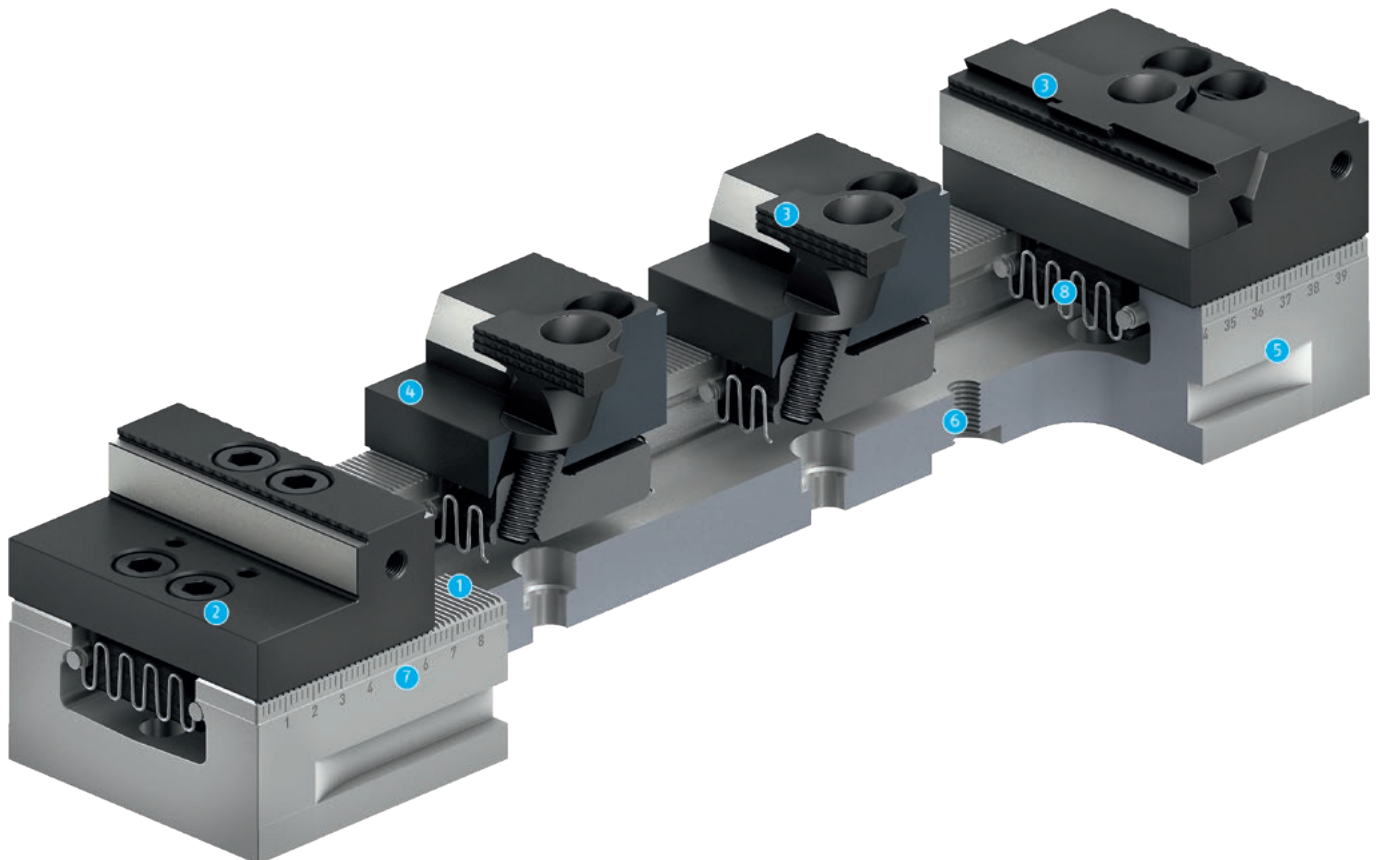


Advantages – Your benefits

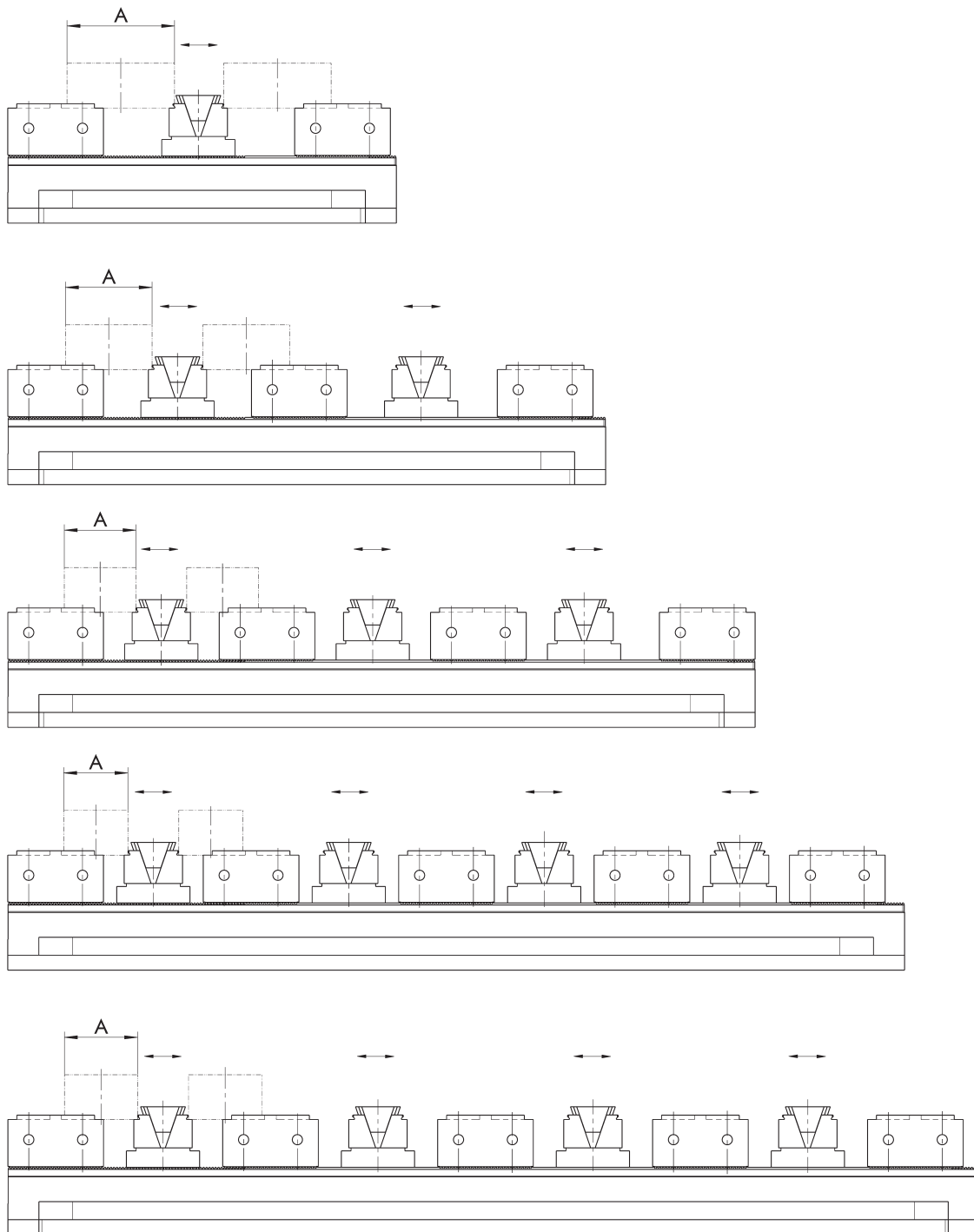
- + KSM2 modular system**
Large selection of possible combinations of system and top jaws as well as accessories, suitable for almost any machining task
- + Hardened and ground serration**
For maximum precision and form stability
- + Laser-etched ruler**
Quick and precise pre-adjustment
- + Combination of several clamping rails**
High level of flexibility
- + Extremely high loading density**
For economical machining
- + Jaw quick-change system**
Even more versatile, even shorter set-up times
- + Wide jaw program**
Optimal adaptation to new clamping tasks
- + Only one spanner wrench is necessary for the multiple clamping vise**
Optimal operator convenience
- + Integrated NSE3 and GFD interface**
Minimization of set-up times. Can be flexibly combined with the large modular quick-change pallet system

Function KSM2

SCHUNK KONTEC KSM2 clamping rails are a flexible multiple clamping system. The required system jaws can be individually installed and removed or positioned using a jaw quick-change system. Clamping is achieved with the movable jaw via a closed wedge hook system that pulls down the workpiece. The back of the adjusting jaws and the fixed jaw serve as the workpiece stop. The clamping range is always based on the length of the clamping rail and the desired loading density of the workpieces.



- 1 Hardened and ground serration**
For maximum precision and form stability
- 2 Fixed jaws as a part of the extensive jaw range**
Optimal adaptation to new clamping tasks
- 3 Wide range of clamping inserts**
The clamping slides can be adapted to different clamping tasks quickly and easily.
- 4 Adjustable jaw, also reversible by 180°**
Used for mounting the clamping inserts for workpiece clamping and as a fixed jaw for the next workpiece
- 5 Extremely rigid clamping rail**
Ensures optimal production results
- 6 Integrated NSE3 and GFD interface**
Adaptation to all NSL3 and GFD clamping stations possible
- 7 Laser-etched ruler**
For fast positioning of the system jaws
- 8 Jaw quick-change system**
The jaws can be quickly and easily removed with an upward movement from the clamping rail



Clamping rails with maximum number of clamping points.
Subject to technical changes.

Clamping example

Clamping ranges for raw part clamping of round workpieces.

Workpiece clamping using prism jaws and wedge clamping elements KSE with a 3 mm grip profile.

Technical data KSM2

Description	Rail width [mm]	Rail lengths [mm]	Rail height [mm]	Max. clamping force [kN]	Max. torque [Nm]
KSM2	90	260, 400, 500, 600, 650	45	30	50

Note

Clamping ranges

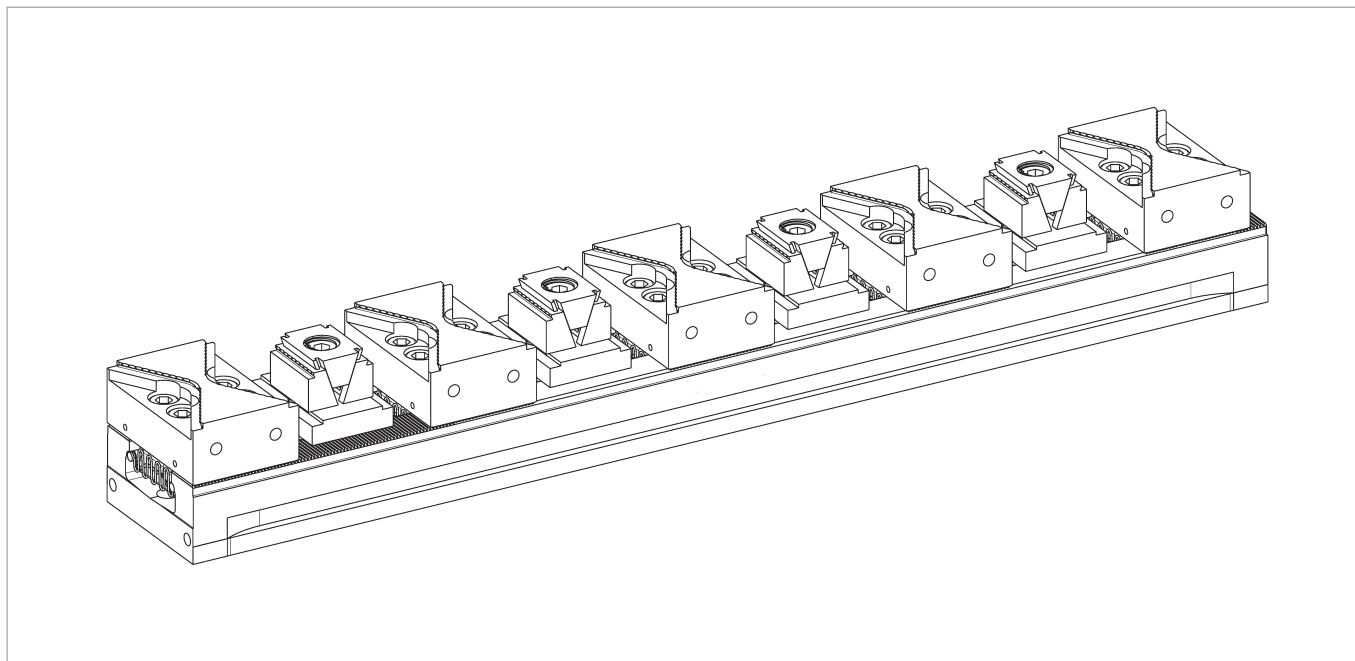
The specified clamping ranges always refer to the length of the corresponding clamping rail and the required number of clamping points.

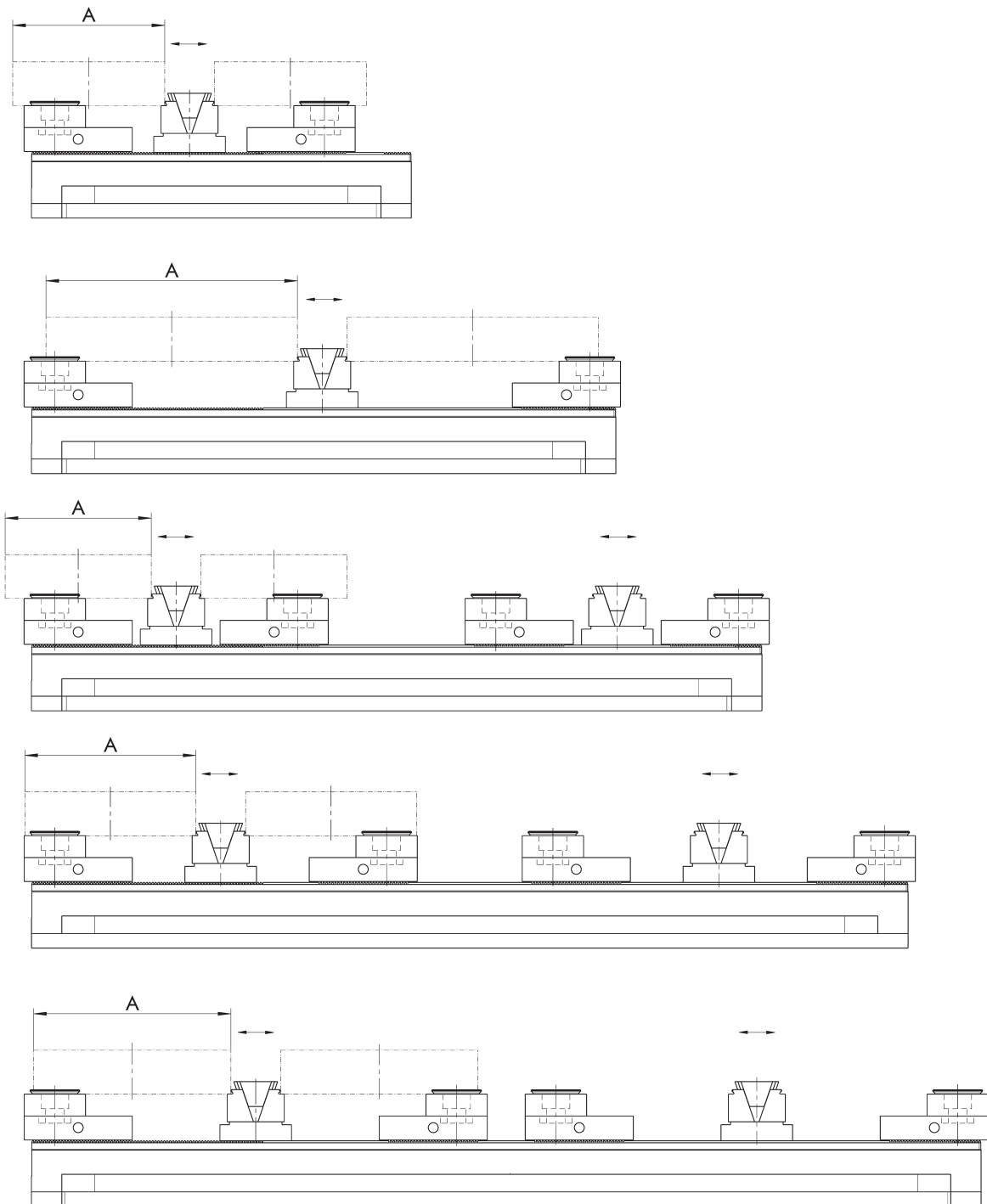
Possible clamping ranges

Type	Rail length [mm]	ID	ØA with possible number of workpieces			
			2 [mm]	4 [mm]	6 [mm]	8 [mm]
KSM2 90-260	260	0490723	Ø36 - Ø72			
KSM2 90-400	400	0490724	Ø36 - Ø136	Ø36 - Ø58		
KSM2 90-500	500	0490725	Ø36 - Ø160	Ø36 - Ø82	Ø36 - Ø48	
KSM2 90-600	600	0490726	Ø36 - Ø160	Ø36 - Ø105	Ø36 - Ø64	Ø36 - Ø43
KSM2 90-650	650	0490727	Ø36 - Ø160	Ø36 - Ø116	Ø36 - Ø70	Ø36 - Ø49

Required jaws and accessories

Type	Description	ID	Number required for the clamping ranges shown above			
Prism jaw grip	SGVA-F 90-64-34.9	1329341	2 ST	3 ST	4 ST	5 ST
Wedge clamping element, grip	SGKSE-G3 65-49-39	1329347	1 ST	2 ST	3 ST	4 ST





Clamping rails with maximum number of clamping points.
Subject to technical changes.

Clamping example

Clamping ranges for raw part clamping of round workpieces.

Workpiece clamping using adapter plates, round reversible grip jaws with a 3 mm grip profile and wedge clamping elements KSE with a 3 mm grip profile.

Technical data KSM2

Description	Rail width [mm]	Rail lengths [mm]	Rail height [mm]	Max. clamping force [kN]	Max. torque [Nm]
KSM2	90	260, 400, 500, 600, 650	45	30	50

Note

Clamping ranges

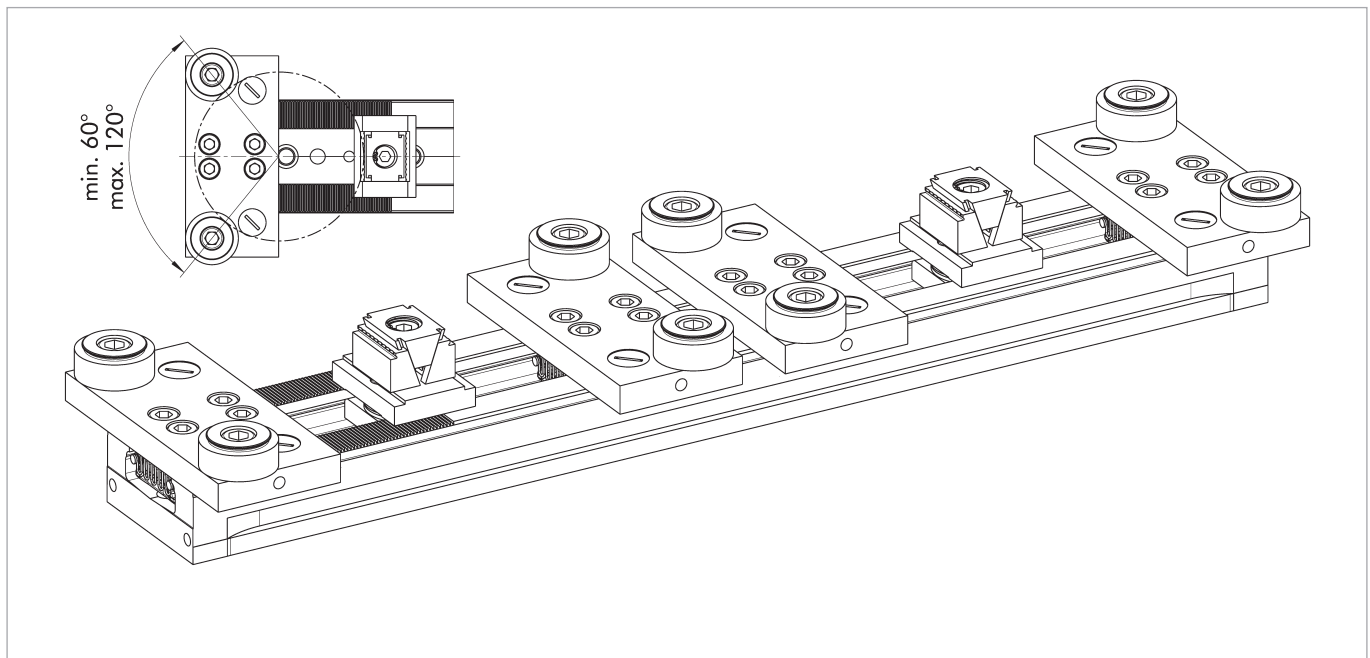
The specified clamping ranges always refer to the length of the corresponding clamping rail and the required number of clamping points.

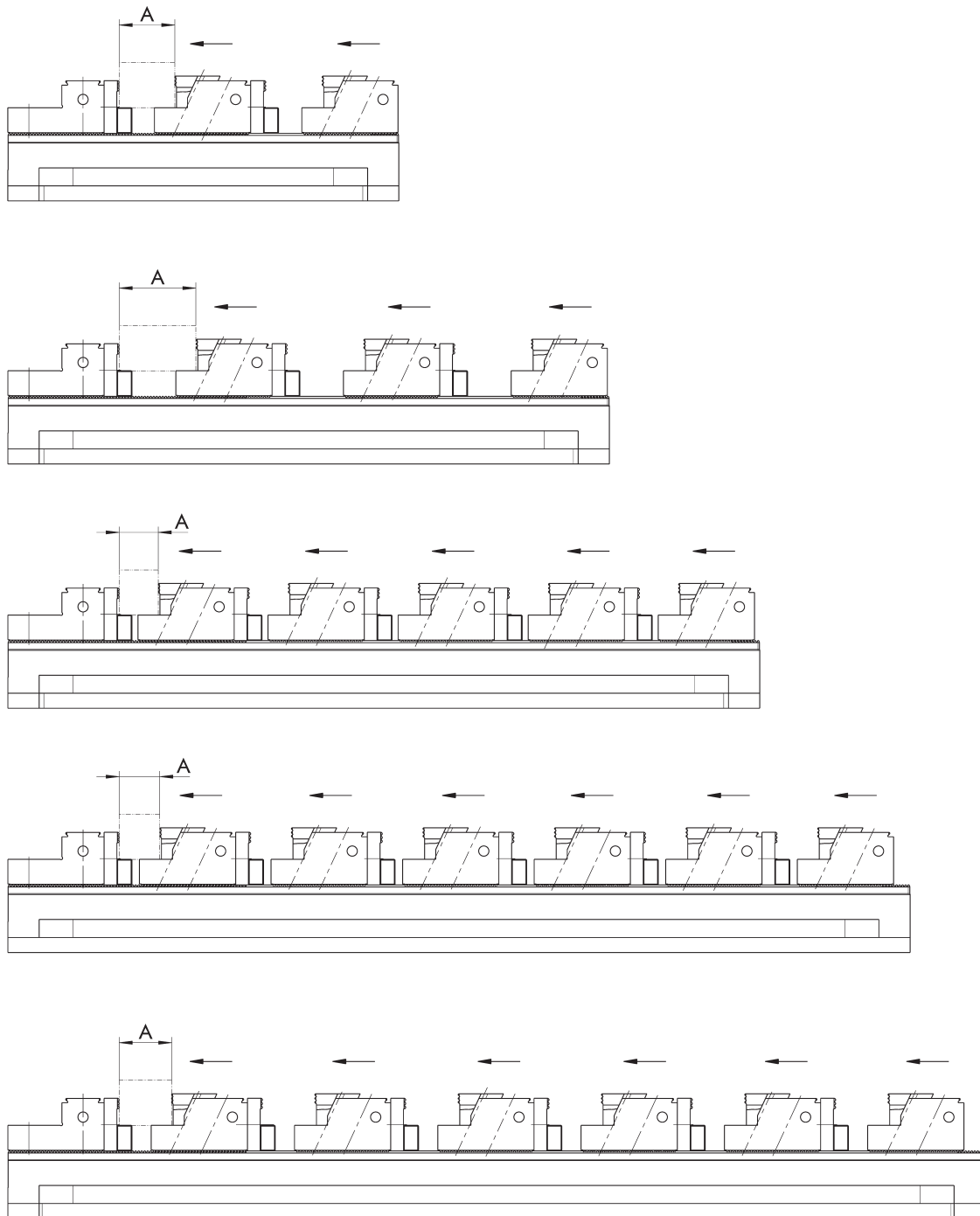
Possible clamping ranges

Type	Rail length [mm]	ID	ØA with possible number of workpieces	
			2 [mm]	4 [mm]
KSM2 90-260	260	0490723	Ø90 - Ø104	
KSM2 90-400	400	0490724	Ø90 - Ø172	
KSM2 90-500	500	0490725	Ø90 - Ø217	Ø90 - Ø97
KSM2 90-600	600	0490726	Ø90 - Ø230	Ø90 - Ø117
KSM2 90-650	650	0490727	Ø90 - Ø230	Ø90 - Ø217

Required jaws and accessories

Type	Description	ID	Number required for the clamping ranges shown above	
Adapter plate	SGA-6 160-74-17	1329343	2 ST	4 ST
Clamping insert round	GBG-R Ø42-18-3	1589817	4 ST	8 ST
Wedge clamping element, grip	SGKSE-G3 65-49-39	1329347	1 ST	2 ST





Clamping rails with maximum number of clamping points.
Subject to technical changes.

Clamping example

Clamping ranges for raw part clamping of cubic workpieces.

Workpiece clamping using system jaws with a 3 mm grip profile, a pull-down jaw with a B-40 mm grip profile and a top jaw with a B-90 mm grip profile.

Technical data KSM2

Description	Rail width [mm]	Rail lengths [mm]	Rail height [mm]	Max. clamping force [kN]	Max. torque [Nm]
KSM2	90	260, 400, 500, 600, 650	45	30	50

Note

Clamping ranges

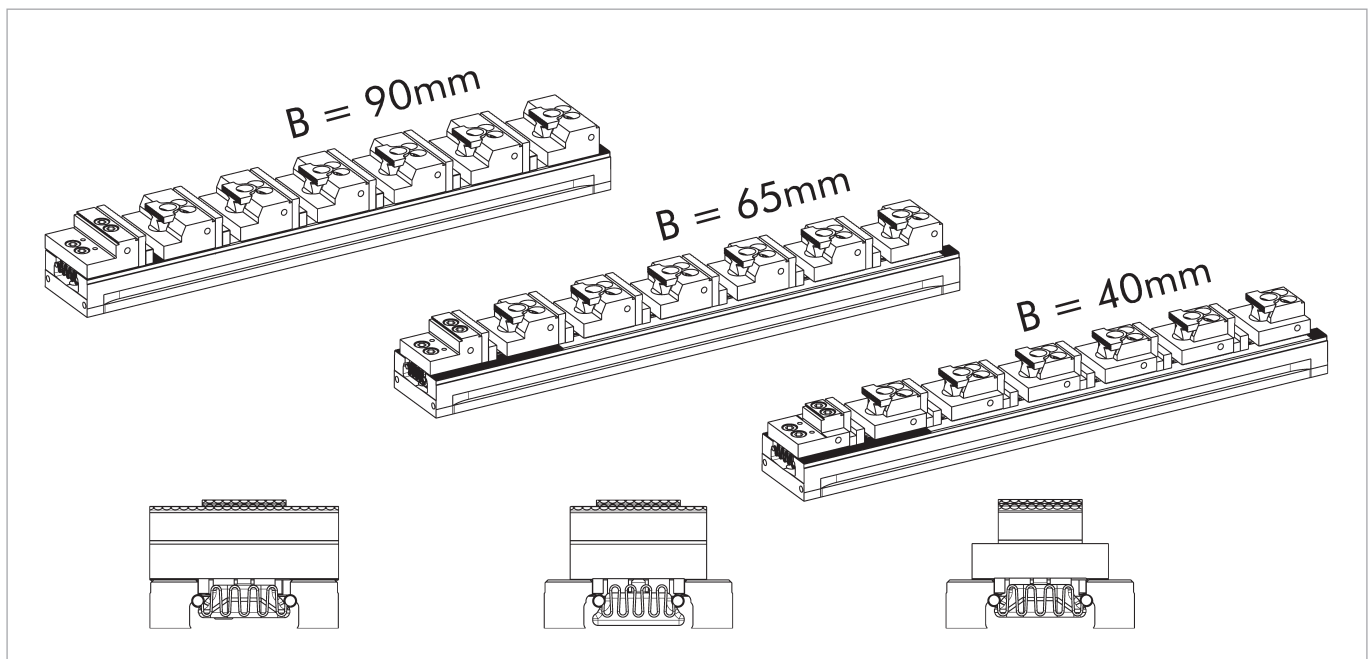
The specified clamping ranges always refer to the length of the corresponding clamping rail and the required number of clamping points.

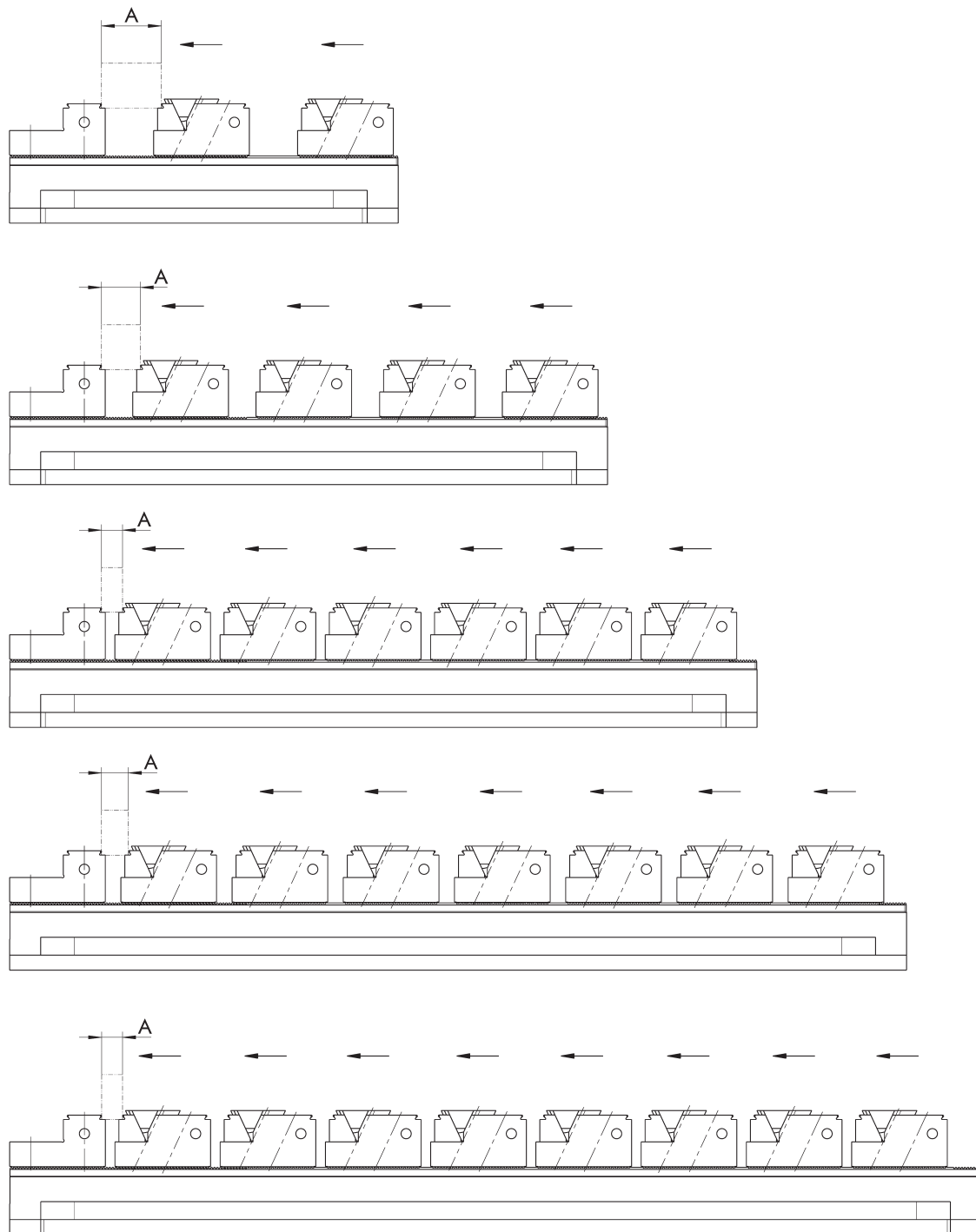
Possible clamping ranges

Type	Rail length [mm]	ID	A with possible number of workpieces					
			1 [mm]	2 [mm]	3 [mm]	4 [mm]	5 [mm]	6 [mm]
KSM2 90-260	260	0490723	25 - 134	25 - 37				
KSM2 90-400	400	0490724	25 - 274	25 - 107	25 - 51			
KSM2 90-500	500	0490725	25 - 374	25 - 157	25 - 82	25 - 48	25 - 26	
KSM2 90-600	600	0490726	25 - 474	25 - 207	25 - 117	25 - 72	25 - 46	25 - 27
KSM2 90-650	650	0490727	25 - 524	25 - 231	25 - 133	25 - 86	25 - 56	25 - 35

Required jaws and accessories

Type	Description	ID	Number required for the clamping ranges shown above					
Reversible grip jaw	SGWB-G3-F 90-64-34.9	0490730						
	SGWB-G3-F 65-64-34.9	0490729						
	SGWB-G3-F 40-64-34.9	0490728	1 ST	1 ST	1 ST	1 ST	1 ST	1 ST
Adjustable grip jaw	SGV 90-64-34.9	0490733						
	SGV 65-64-34.9	0490732						
	SGV 40-64-34.9	0490731	1 ST	2 ST	3 ST	4 ST	5 ST	6 ST
Grip jaw	GBG 90-35-10	0490571						
	GBG 65-35-10	0490564						
	GBG 40-35-10	0490767	1 ST	2 ST	3 ST	4 ST	5 ST	6 ST
Pull-down jaw, serrated	GBVS-N-R 40-25-41	0490750	1 ST	2 ST	3 ST	4 ST	5 ST	6 ST
	GWU-4 90-17	0490762						
Workpiece supports	GWU-4 65-17	0490759	1 SET	1 SET	2 SET	2 SET	3 SET	3 SET





Clamping rails with maximum number of clamping points.
Subject to technical changes.

Clamping example

Clamping ranges for raw part clamping of cubic workpieces.

Workpiece clamping using system jaws with a 3 mm grip profile and parallel jaws with a 3 mm grip profile.

Technical data KSM2

Description	Rail width [mm]	Rail lengths [mm]	Rail height [mm]	Max. clamping force [kN]	Max. torque [Nm]
KSM2	90	260, 400, 500, 600, 650	45	30	50

Note

Clamping ranges

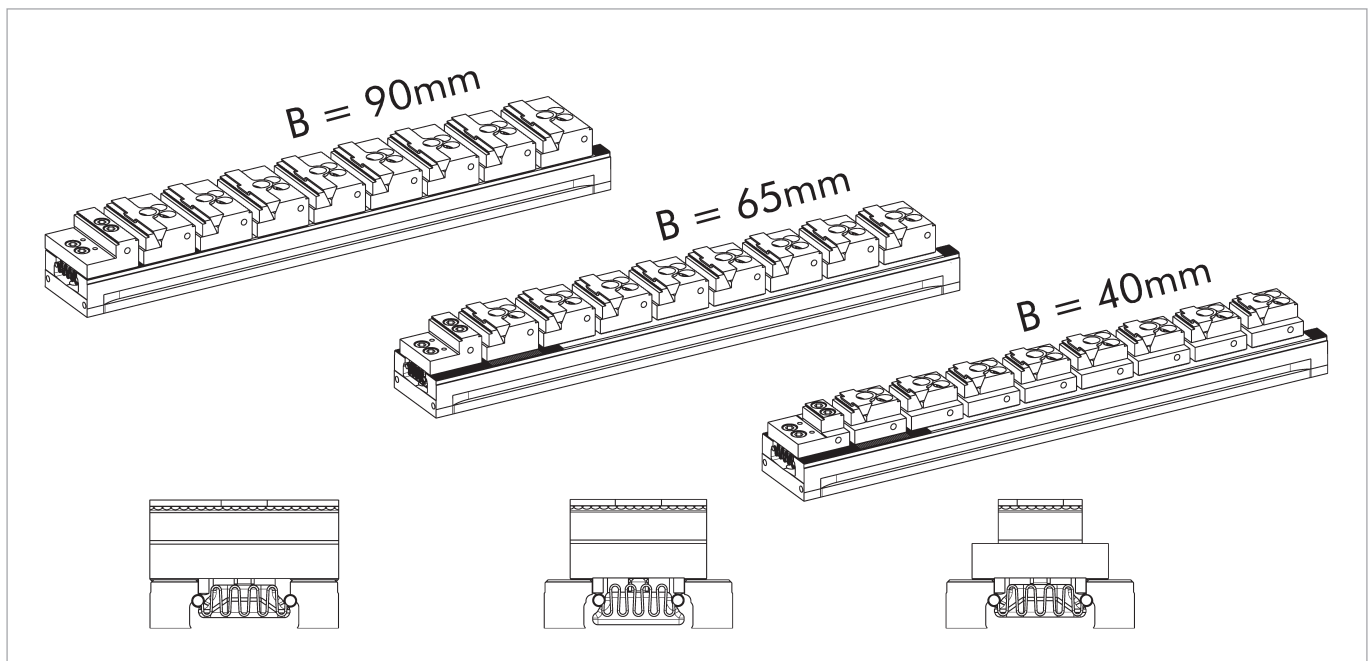
The specified clamping ranges always refer to the length of the corresponding clamping rail and the required number of clamping points.

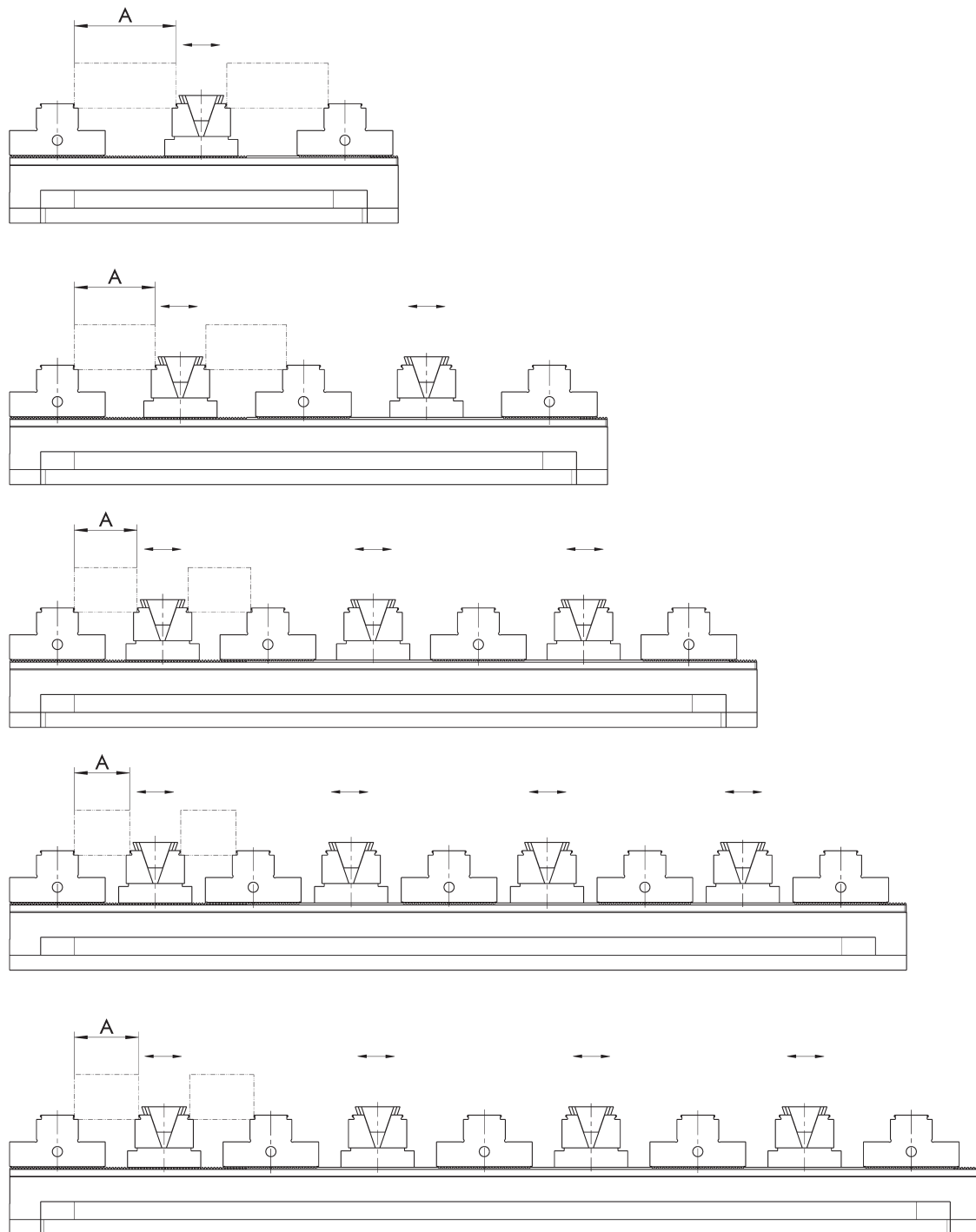
Possible clamping ranges

Type	Rail length [mm]	ID	A with possible number of workpieces								
			1 [mm]	2 [mm]	3 [mm]	4 [mm]	5 [mm]	6 [mm]	7 [mm]	8 [mm]	
KSM2 90-260	260	0490723	10 - 138	10 - 40							
KSM2 90-400	400	0490724	10 - 278	10 - 110	10 - 54	10 - 26					
KSM2 90-500	500	0490725	10 - 378	10 - 160	10 - 86	10 - 50	10 - 28	10 - 14			
KSM2 90-600	600	0490726	10 - 478	10 - 210	10 - 120	10 - 76	10 - 48	10 - 30	10 - 18		
KSM2 90-650	650	0490727	10 - 528	10 - 234	10 - 136	10 - 88	10 - 58	10 - 38	10 - 26	10 - 14	

Required jaws and accessories

Type	Description	ID	Number required for the clamping ranges shown above							
Reversible grip jaw	SGWB-G3-F 90-64-34.9	0490730								
	SGWB-G3-F 65-64-34.9	0490729								
	SGWB-G3-F 40-64-34.9	0490728	1 ST	1 ST	1 ST	1 ST	1 ST	1 ST	1 ST	1 ST
Adjustable grip jaw	SGV 90-64-34.9	0490733								
	SGV 65-64-34.9	0490732								
	SGV 40-64-34.9	0490731	1 ST	2 ST	3 ST	4 ST	5 ST	6 ST	7 ST	8 ST
Parallel grip jaw	GBVS-P-G3 90-41-22	0490753								
	GBVS-P-G3 65-41-22	0490752								
	GBVS-P-G3 40-41-22	0490751	1 ST	2 ST	3 ST	4 ST	5 ST	6 ST	7 ST	8 ST





Clamping rails with maximum number of clamping points.
Subject to technical changes.

Clamping example

Clamping ranges for raw part clamping of cubic workpieces.

Workpiece clamping using system jaws VS with a 3 mm grip profile and wedge clamping elements KSE with a 3 mm grip profile.

Technical data KSM2

Description	Rail width [mm]	Rail lengths [mm]	Rail height [mm]	Max. clamping force [kN]	Max. torque [Nm]
KSM2	90	260, 400, 500, 600, 650	45	30	50

Note

Clamping ranges

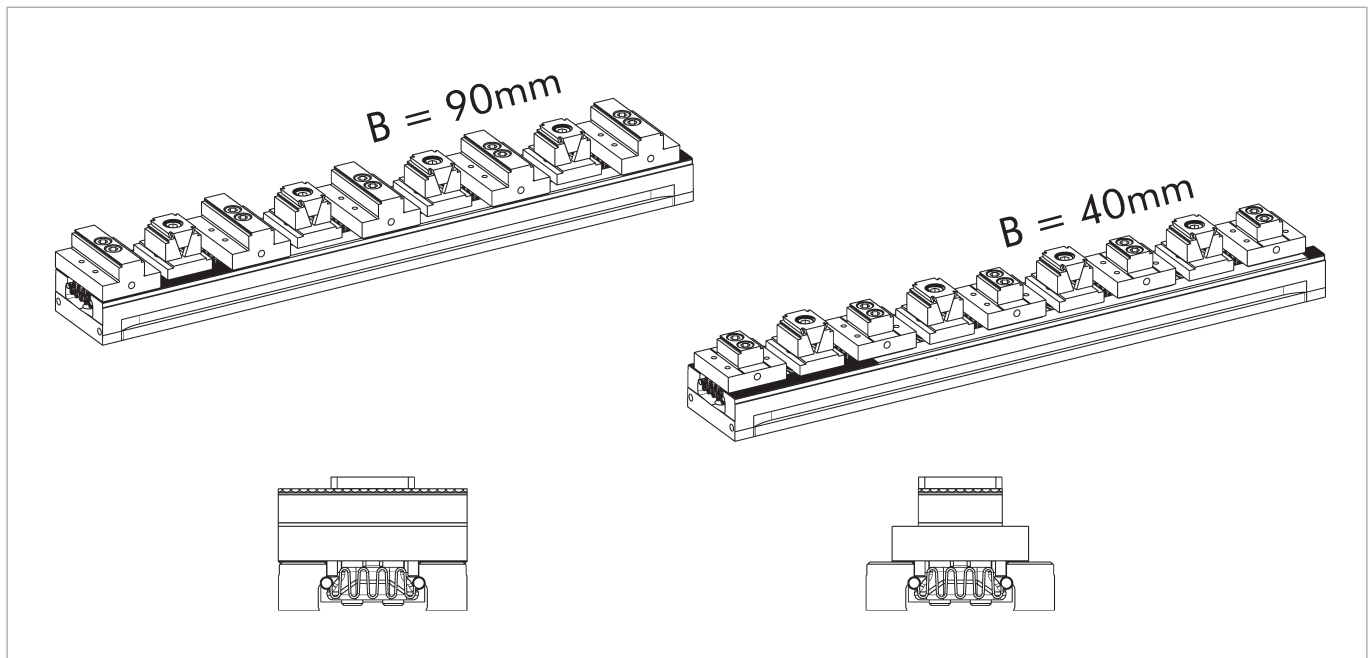
The specified clamping ranges always refer to the length of the corresponding clamping rail and the required number of clamping points.

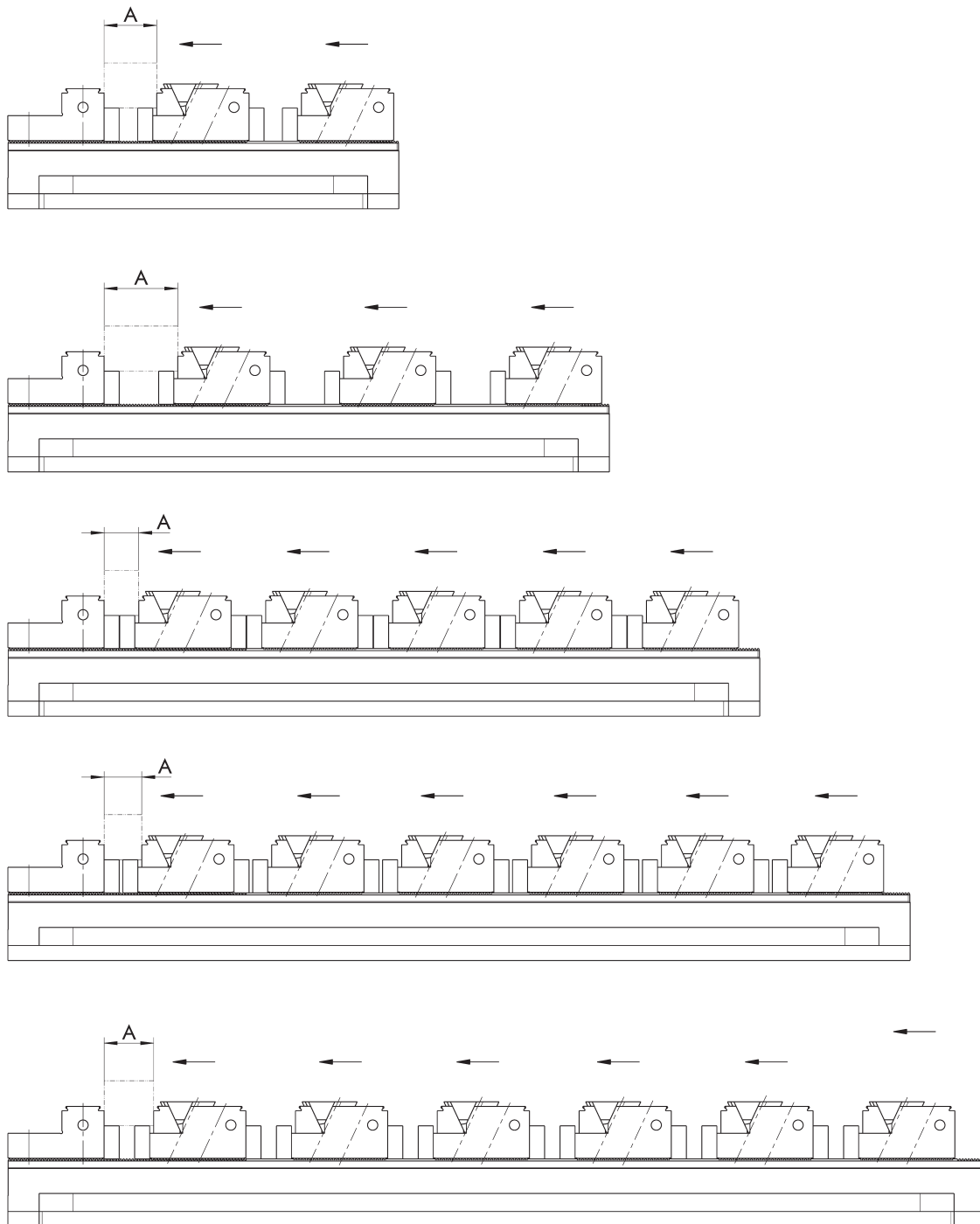
Possible clamping ranges

Type	Rail length [mm]	ID	A with possible number of workpieces			
			2 [mm]	4 [mm]	6 [mm]	8 [mm]
KSM2 90-260	260	0490723	28 - 68			
KSM2 90-400	400	0490724	28 - 138	28 - 54		
KSM2 90-500	500	0490725	28 - 188	28 - 79	28 - 42	
KSM2 90-600	600	0490726	28 - 238	28 - 104	28 - 59	28 - 37
KSM2 90-650	650	0490727	28 - 263	28 - 116	28 - 67	28 - 43

Required jaws and accessories

Type	Description	ID	Number required for the clamping ranges shown above			
Central grip jaw	SGM-G3 90-28-32	1589877				
	SGM-G3 40-28-32	1589876	2 ST	3 ST	4 ST	5 ST
Wedge clamping element, grip	SGKSE-G3 65-49-39	1329347	1 ST	2 ST	3 ST	4 ST





Clamping rails with maximum number of clamping points.
Subject to technical changes.

Clamping example

Clamping ranges for clamping smooth parts of cubic workpieces. (0P20)

Workpiece clamping using system jaws with a 3 mm grip profile, parallel jaws with a 3 mm grip profile and workpiece supports with a 22 mm height on smooth clamping surfaces.

Technical data KSM2

Description	Rail width [mm]	Rail lengths [mm]	Rail height [mm]	Max. clamping force [kN]	Max. torque [Nm]
KSM2	90	260, 400, 500, 600, 650	45	30	50

Note

Clamping ranges

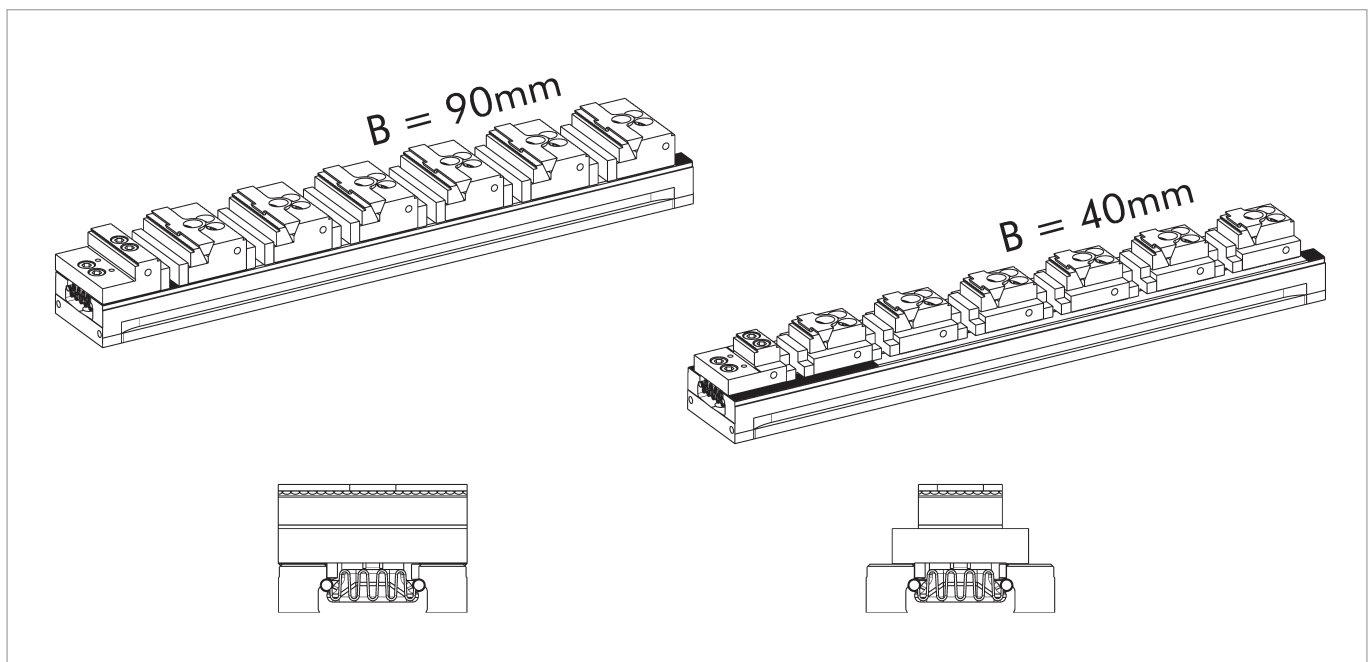
The specified clamping ranges always refer to the length of the corresponding clamping rail and the required number of clamping points.

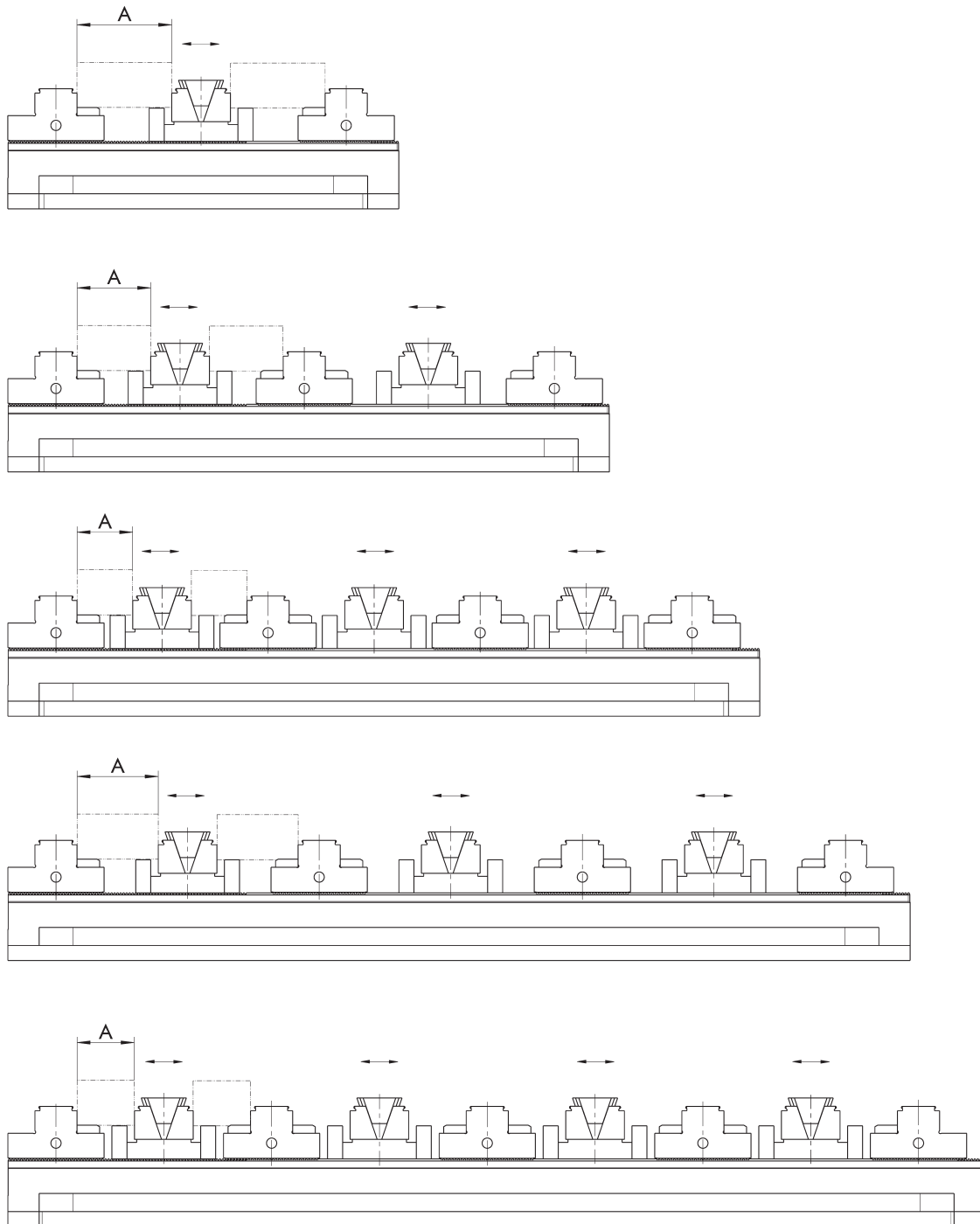
Possible clamping ranges

Type	Rail length [mm]	ID	A with possible number of workpieces							
			1 [mm]	2 [mm]	3 [mm]	4 [mm]	5 [mm]	6 [mm]	7 [mm]	
KSM2 90-260	260	0490723	12 - 133	12 - 35						
KSM2 90-400	400	0490724	12 - 273	12 - 105	12 - 49	12 - 21				
KSM2 90-500	500	0490725	12 - 373	12 - 155	12 - 71	12 - 45	12 - 23			
KSM2 90-600	600	0490726	12 - 473	12 - 205	12 - 104	12 - 71	12 - 43	12 - 25		
KSM2 90-650	650	0490727	12 - 523	12 - 229	12 - 120	12 - 83	12 - 53	12 - 33	12 - 21	

Required jaws and accessories

Type	Description	ID	Number required for the clamping ranges shown above							
Reversible grip jaw	SGWB-G3-F 90-64-34.9	0490730								
	SGWB-G3-F 40-64-34.9	0490728	1 ST	1 ST	1 ST	1 ST	1 ST	1 ST	1 ST	1 ST
Adjustable grip jaw	SGV 90-64-34.9	0490733								
	SGV 40-64-34.9	0490731	1 ST	2 ST	3 ST	4 ST	5 ST	6 ST	7 ST	
Parallel grip jaw	GBVS-P-G3 90-41-22	0490753								
	GBVS-P-G3 40-41-22	0490751	1 ST	2 ST	3 ST	4 ST	5 ST	6 ST	7 ST	
Workpiece support	GWU-4 90-22	1589889								
	GWU-4 40-22	1589878	1 SET	2 SET	3 SET	4 SET	5 SET	6 SET	7 SET	





Clamping rails with maximum number of clamping points.
Subject to technical changes.

Clamping example

Clamping ranges for clamping smooth parts of cubic workpieces. (0P20)

Workpiece clamping using system jaws VS with a 3 mm grip profile, supports for surface milling, wedge clamping elements KSE and workpiece supports with a 22 mm height on smooth clamping surfaces.

Technical data KSM2

Description	Rail width [mm]	Rail lengths [mm]	Rail height [mm]	Max. clamping force [kN]	Max. torque [Nm]
KSM2	90	260, 400, 500, 600, 650	45	30	50

Note

Clamping ranges

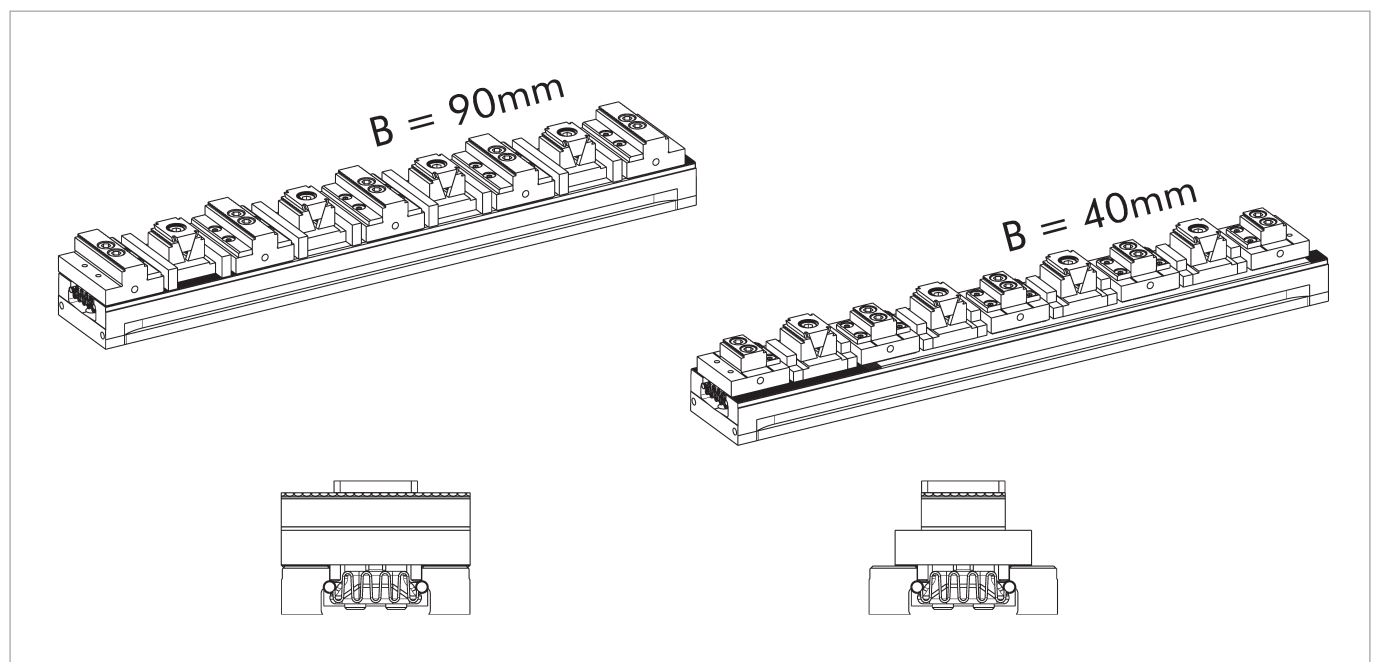
The specified clamping ranges always refer to the length of the corresponding clamping rail and the required number of clamping points.

Possible clamping ranges

Type	Rail length [mm]	ID	A with possible number of workpieces			
			2 [mm]	4 [mm]	6 [mm]	8 [mm]
KSM2 90-260	260	0490723	33 - 63			
KSM2 90-400	400	0490724	33 - 133	33 - 49		
KSM2 90-500	500	0490725	33 - 183	33 - 74	33 - 37	
KSM2 90-600	600	0490726	33 - 233	33 - 99	33 - 54	
KSM2 90-650	650	0490727	33 - 258	33 - 111	33 - 62	33 - 38

Required jaws and accessories

Type	Description	ID	Number required for the clamping ranges shown above			
Central grip jaw	SGM-G3 90-28-32	1589877				
	SGM-G3 40-28-32	1589876	2 ST	3 ST	4 ST	5 ST
Wedge clamping element, grip	SGKSE-G3 65-49-39	1329347	1 ST	2 ST	3 ST	4 ST
Workpiece locating surface hard	GWU-6 90-5.4	1589950				
	GWU-6 40-5.4	1589939	1 ST	2 ST	3 ST	4 ST
Workpiece support	GWU-4 90-22	1589889				
	GWU-4 40-22	1589878	1 SET	2 SET	3 SET	4 SET



System jaws

Reversible jaw

Fixed stop for workpieces.
On both sides with smooth clamping face.



Suitable for	Description	Interface	ID
KSM2 90	SGWB-E-F 40-64-34.9	W-40	1327114
KSM2 90	SGWB-E-F 90-64-34.9	W-90	1329339

Reversible grip jaw

Fixed stop for workpieces.
With grip step 3 mm (up to 22 HRC) and a smooth clamping surface on both sides.



Suitable for	Description	Interface	ID
KSM2 90	SGWB-G3-F 40-64-34.9	W-40	0490728
KSM2 90	SGWB-G3-F 65-64-34.9	W-65-2	0490729
KSM2 90	SGWB-G3-F 90-64-34.9	W-90	0490730

Adjustable jaw

First side for mounting clamping inserts,
second side with smooth clamping surface.



Suitable for	Description	Interface	ID
KSM2 90	SGV-E 40-64-34.9	W-40	1327116
		W-SEI	
KSM2 90	SGV-E 90-64-34.9	W-90	1329342
		W-SEI	

Adjustable grip jaw

First side for mounting clamping inserts,
second side with grip step 3 mm (up to 22 HRC) and smooth clamping surface.



Suitable for	Description	Interface	ID
KSM2 90	SGV 40-64-34.9	W-40	0490731
		W-SEI	
KSM2 90	SGV 65-64-34.9	W-65-2	0490732
		W-SEI	
KSM2 90	SGV 90-64-34.9	W-90	0490733

Adjustable grip jaw

Raised adjustable jaw (H = 165 mm), first side for holding clamping inserts, second side for holding top jaws.



Suitable for	Description	Interface	ID
KSM2 90	SGV-H 65-124-164.3	W-SEI	0490734

Monoblock jaw

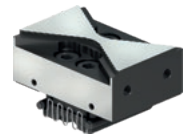
Central jaw when clamping two workpieces, with grip step 3 mm (up to 22 HRC) and smooth clamping surface on both sides.



Suitable for	Description	Interface	ID
KSM2 90	SGBB-F 90-64-34.9	W-90	1329340

Prism jaw grip

Central jaw when clamping two bulky workpieces, with prism-shaped grip step 3 mm (up to 22 HRC) on both sides.



Suitable for	Description	Interface	ID
KSM2 90	SGVA-F 90-64-34.9		1329341

Adapter plate

Used – in combination with adjustable jaws, clamping inserts and 6-way reversal jaws – to clamp bulky workpieces.



Suitable for	Description	Interface	ID
KSM2 90	SGA-6 160-74-17	W-38	1329343

Central grip jaw

Fixed jaw when clamping with wedge clamping elements.
With grip step 3 mm (up to 22 HRC) and a smooth clamping surface on both sides.



Suitable for	Description	Interface	ID
KSM2 90	SGM-G3 40-28-32		1589876
KSM2 90	SGM-G3 90-28-32		1589877

Wedge clamping element, smooth

Central jaw when clamping two workpieces, with smooth clamping surface on both sides, support height 11 mm.



Suitable for	Description	Interface	ID
KSM2 90	SGKSE-E 65-49-39		1329345

Wedge clamping element, grip

Central jaw when clamping two workpieces, with grip step 3 mm (up to 22 HRC) and smooth clamping surface on both sides, support height 11 mm)



Suitable for	Description	Interface	ID
KSM2 90	SGKSE-G3 65-49-39		1329347

Wedge clamping element, serrated

Central jaw when clamping two workpieces, with serrated clamping surface on both sides, support height 11 mm.



Suitable for	Description	Interface	ID
KSM2 90	SGKSE-R 65-49-39		1329346

Basic clamping jaw

For holding suitable aluminum jaws.



Suitable for	Description	Interface	ID
KSM2 90	SGBS 90-40-31		1500442

Aluminum jaw

Suitable for basic clamping jaw. Used for rework at the customer site e.g. for incorporating contours or special shapes.

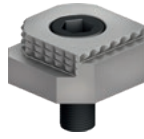


Suitable for	Description	Interface	ID
KSM2 90	SGBS-AL 100-75-35.7		1500446

Top jaws

6-way reversible jaws grip

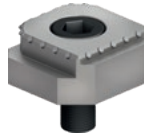
With five grip steps as well as a coated clamping face.



Description	Width mm	Height mm	Depth mm	Interface	ID
GBG-6W 38-38-18	38.5	18	38.2	W-38	0430803

6-way reversible jaw carbide grip

With five carbide grip steps as well as a smooth clamping face.



Description	Width mm	Height mm	Depth mm	Interface	ID
GBCG-6W 38-38-18	38.5	18	38.2	W-38	1395550

Clamping insert round

With grip step, 3 mm.



Description	Width mm	Height mm	Depth mm	Interface	ID
GBG-R Ø42-18-3	42	18		W-38	1589817

Pull-down jaw, serrated

Clamping insert for adjustable jaws with serrated clamping surface and pull-down effect.



Description	Width mm	Height mm	Depth mm	Interface	ID
GBVS-N-R 40-25-41	40	25	41	W-SEI	0490750

Pull-down jaw serrated, round

Clamping insert for adjustable jaws with round, serrated clamping surface and pull-down effect.



Description	Width mm	Height mm	Depth mm	Interface	ID
GBVS-NR-R 40-25-41	40	25	41	W-SEI	1329348

Parallel jaw, serrated, round

Clamping insert for adjustable jaws with serrated clamping surface.



Description	Width mm	Height mm	Depth mm	Interface	ID
GBVS-PR-R 40-25-41	40	25	41	W-SEI	1329349

Parallel jaw smooth

Clamping insert for adjustable jaws with smooth clamping surface.



Description	Width mm	Height mm	Depth mm	Interface	ID
GBVS-P-E 40-41-22	40	22	41	W-SEI	0490778
GBVS-P-E 65-41-22	65	22	41	W-SEI	0490779
GBVS-P-E 90-41-22	90	22	41	W-SEI	0490780

Parallel grip jaw

Clamping insert for adjustable jaws with 3 mm stage grip, and smooth clamping surface.



Description	Width mm	Height mm	Depth mm	Interface	ID
GBVS-P-G3 40-41-22	40	22	41	W-SEI	0490751
GBVS-P-G3 65-41-22	65	22	41	W-SEI	0490752
GBVS-P-G3 90-41-22	90	22	41	W-SEI	0490753

Parallel jaw, serrated

Clamping insert for adjustable jaws with serrated clamping surface.



Description	Width mm	Height mm	Depth mm	Interface	ID
GBVS-P-R 40-42.5-25	40	40	25	W-SEI	1505724
GBVS-P-R 65-42.5-25	65	65	25	W-SEI	1411018
GBVS-P-R 90-42.5-25	90	25	42.5	W-SEI	0490786

Pendulum jaw, serrated

Clamping insert for adjustable jaws with serrated clamping surfaces and pendulum mechanism for compensating minor workpiece unevenness.



Description	Width mm	Height mm	Depth mm	Interface	ID
GBVS-A-R 90-41-25	90	25	41	W-SEI	0490754

Clamping wedge

Clamping insert for adjustable jaws for mounting soft chuck jaws.



Description	Width mm	Height mm	Depth mm	Interface	ID
GBVS-K 90-41-25	90	25	41	W-SEI	0490721

Soft aluminum chuck jaw

Suitable for the clamping wedge (ID 0490721).



Description	Width mm	Height mm	Depth mm	Interface	ID
GBVS-W-A 90-30-18	90	18	30		0490722

Soft steel chuck jaw

Suitable for the clamping wedge (ID 0490721).



Description	Width mm	Height mm	Depth mm	Interface	ID
GBVS-W-S 90-30-18	90	18	30		0490777

Serrated jaw

For increasing the friction between jaw and workpiece with minimal clamping impressions. Height = 35 mm.



Description	Width mm	Height mm	Depth mm	Interface	ID
GBC 40-35-11	40	35	11	W-40	0490555
GBC 65-35-11	64	35	11	W-65-2	0490562
GBC 90-35-11	90	35	11	W-90	0490569

Ground jaw

With a completely ground clamping face. Height = 35 mm.



Description	Width mm	Height mm	Depth mm	Interface	ID
GBP 40-35-10	40	35	10	W-40	0490578
GBP 65-35-10	64	35	10	W-65-2	0490579
GBP 90-35-10	90	35	10	W-90	0490580

Soft jaw

Blanks for rework by the customer. Height = 35 mm.



Description	Width mm	Height mm	Depth mm	Interface	ID
GBW 40-35-16	40	35	16	W-40	0490556
GBW 65-35-16	64	35	16	W-65-2	0490589
GBW 90-35-16	90	35	16	W-90	0490570

Grip jaw

For embossed clamping of unhardened materials up to 22 HRC. Height = 35 mm.



Description	Width mm	Height mm	Depth mm	Interface	ID
GBG 40-35-10	40	35	10	W-40	0490767
GBG 65-35-10	64	35	10	W-65-2	0490564
GBG 90-35-10	90	35	10	W-90	0490571

Accessories

Clamping force tester

For measuring the jaw clamping force of stationary clamping devices.



Suitable for	Description	ID
KSM2 90	IFT SST Set	1475766

Clamping pins SPx

Clamping pin for positive connection with NSE3 clamping modules.



Suitable for	Description	ID
KSM2 90	SPA 40	0471151
KSM2 90	SPB 40	0471152
KSM2 90	SPC 40	0471153

Clamping pin GFD-SP

Clamping pin for positive connection with GFD set-up stations.



Suitable for	Description	ID
KSM2 90	GFD-SP 40	0433600

Torque wrench 5 – 50 Nm

Serves for applying a defined torque. With 3/8" square drive.



Suitable for	Description	ID
KSM2 90	GSH-D 5-50	0432355

Hexagonal pin insert SW 8

Suitable for square drive 3/8".



Suitable for	Description	ID
KSM2 90	GSK-A SW8-3/8"	0490764

Connecting element

Used for connecting two or more clamping rails.



Suitable for	Description	ID
KSM2 90	GVE-KSM2 90	0490765

Support

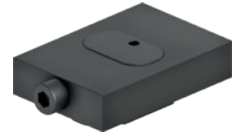
Height compensation elements matching the workpiece support for vibration damping.



Suitable for	Description	ID
KSM2 90	GAFI 90-8	1329386
KSM2 90	GAFI 90-13	1329387

Adjustable support

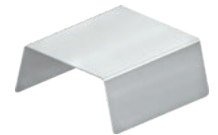
Adjustable workpiece support for vibration damping when machining long workpieces with the KSM2 clamping rails.



Suitable for	Description	ID
KSM2 90	GAFI-A 90-17	1329385

Cover plates

Cover plates to prevent accumulation of chips within the clamping device.



Suitable for	Description	ID
KSM2 90	GAB-KSM2 84 x 50	1334879
KSM2 90	GAB-KSM2 86 x 50	1334878
KSM2 90	GAB-KSM2 86 x 200	1334880

Workpiece stop

Workpiece stop with minimum space requirements and continuously adjustable stop slide. Including stop slider 40 and 80 mm.



Suitable for	Description	ID
KSM2 90	GWSA M8-23	1645258

Magnetic workpiece stop, small

For quick and easy attachment to system jaws or vises.



Suitable for	Description	ID
KSM2 90	GWSA-M 60 x 15	1391293

Magnetic workpiece stop, large

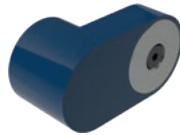
For quick and easy attachment to system jaws or vises.



Suitable for	Description	ID
KSM2 90	GWSA-M 115 x 15	1391331

Extensions

As an accessory for the magnetic workpiece stops.



Suitable for	Description	ID
KSM2 90	GWSA-V Ø68 x 30	1394477

Clamping screws for clamping claws

Used in combination with clamping claws for fastening clamping devices.



Suitable for	Description	T-slot	ID
KSM2 90	GSC-S M10-T12	12 mm/M10	0432043
KSM2 90	GSC-S M12-T14	14 mm/M12	0432044
KSM2 90	GSC-S M14-T16	16 mm/M14	0432045
KSM2 90	GSC-S M16-T18	18 mm/M16	0432046
KSM2 90	GSC-S M16-T20	20 mm/M16	1550423
KSM2 90	GSC-S M16-T22	22 mm/M16	1550424

Clamping screws for base body

Used for directly attaching clamping devices via the base body.



Suitable for	Description	T-slot	ID
KSM2 90	GSC-G-2 M12-T12	12 mm/M12	0490756
KSM2 90	GSC-G-2 M12-T14	14 mm/M12	0490549
KSM2 90	GSC-G-2 M12-T16	16 mm/M12	0490550
KSM2 90	GSC-G-2 M12-T18	18 mm/M12	0490588
KSM2 90	GSC-G-2 M12-T20	20 mm/M12	1329403
KSM2 90	GSC-G-2 M12-T22	22 mm/M12	1329404
KSM2 90	GSC-G-2 M12-T24	24 mm/M12	1329405

Fitting screws

For precise position orientation and mounting of manual clamping vises on the machine table.



Suitable for	Description	ID
KSM2 90	GPSC-1 Ø12f7-M12	0432047

Alignment and centering set

For quick and easy alignment and fastening on T-slot tables.



Suitable for	Description	T-slot	ID
KSM2 90	GAZ-2 T14	14 mm	0432209
KSM2 90	GAZ-2 T16	16 mm	0432210
KSM2 90	GAZ-2 T18	18 mm	0432211

Alignment bolt

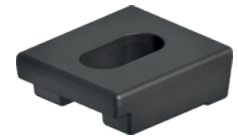
Dienen zum genauen Ausrichten von Spannmitteln.



Suitable for	Description	T-slot	ID
KSM2 90	GAZ-4 T14	14 mm	1329406
KSM2 90	GAZ-4 T16	16 mm	1329407
KSM2 90	GAZ-4 T18	18 mm	1329408

Clamping claws

For quick and easy mounting of SCHUNK clamping devices.



Suitable for	Description	ID
KSM2 90	GSPR-A 50-57	0490604

Cover screw

Used to cover unused clamping insert mounting holes on pendulum and adapter plates.



Suitable for	Description	ID
KSM2 90	GCS Ø22-M12	1307880

Workpiece supports

Workpiece supports – width 40 mm

In different heights.
1 Set = 2 pieces



Suitable for	Description	Height mm	ID
KSM2 90	GWU-4 40-22	22	1589878
KSM2 90	GWU-4 40-25	25	0490757
KSM2 90	GWU-4 40-30	30	0490787

Workpiece supports – width 65 mm

In different heights.
1 Set = 2 pieces



Suitable for	Description	Height mm	ID
KSM2 90	GWU-4 65-11	11	0490758
KSM2 90	GWU-4 65-17	17	0490759
KSM2 90	GWU-4 65-25	25	0490760
KSM2 90	GWU-4 65-30	30	0490788

Workpiece supports – width 90 mm

In different heights.
1 Set = 2 pieces



Suitable for	Description	Height mm	ID
KSM2 90	GWU-4 90-11	11	0490761
KSM2 90	GWU-4 90-17	17	0490762
KSM2 90	GWU-4 90-22	22	1589889
KSM2 90	GWU-4 90-25	25	0490763
KSM2 90	GWU-4 90-30	30	0490789

Workpiece support

Screwable with system jaw.



Suitable for	Description	Height mm	ID
KSM2 90	GWU-5 90-11	11	1329412

Workpiece locating surface hard

Hard support for over-milling.



Suitable for	Description	Height mm	ID
KSM2 90	GWU-6 40-5.4	5.4	1589939
KSM2 90	GWU-6 90-5.4	5.4	1589950



**H.-D. SCHUNK GmbH & Co.
Spanntechnik KG**

Lothringer Str. 23
D-88512 Mengen
Tel. +49-7572-7614-1300
Fax +49-7572-7614-1039
CMM@de.schunk.com
schunk.com