

6600

Electric dosing motor

MACHINE-TYPE

6600-8650

CLAMPING-UNIT

Holding force	7260	kN
Clamping force	6600	kN
Opening force (0 to 10 mm)	556	kN
Opening stroke (max.)	1200	mm
Mould diameter (min.)	535	mm
Max. mouldweight ***)	8600	kg
Max. daylight	2550	mm
Mouldheight		
- min./max.	600-1350	mm
Distance between tie bars	1000x1000	mm
Tie bar diameter	165	mm
Ejector force	94	kN
Ejector stroke (max.)	300	mm
Dry cycle time (Euromap 6 - 2007)	2.3 (700 mm)	s
Weight clamping-unit	41.6	kg*10 ³

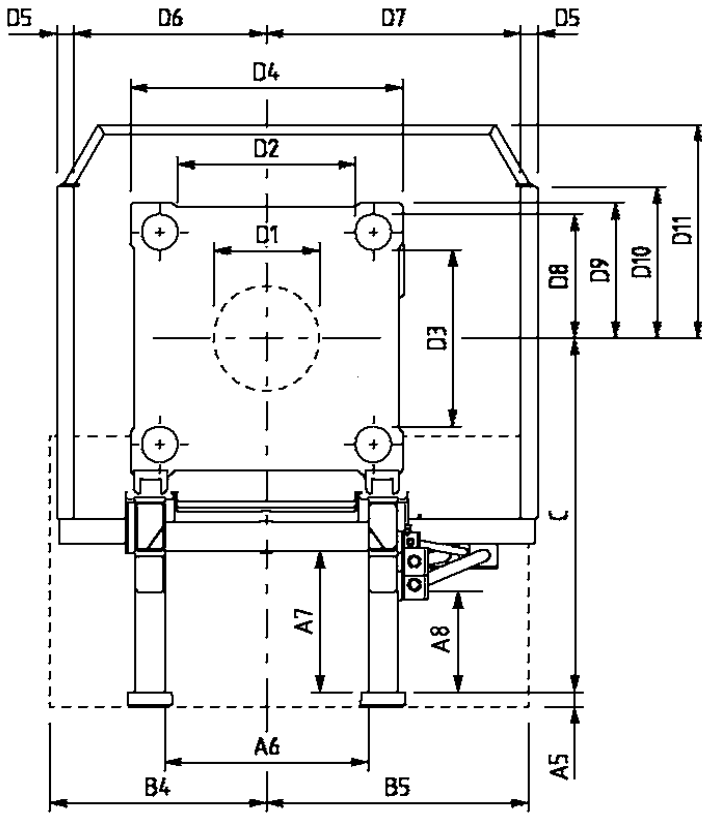
INJECTION UNIT

Screw	B	
Screw diameter	115	mm
Screw L/D ratio	25	
Screwtype	PE2	
Injection pressure (max.) **)	1600	bar
Screw stroke (max.)	515	mm
Calculated swept volume (max.)	5349	cm ³
Shot weight PS (max.)	5082	g
Injection rate (max.)	4155	cm ³ /s
Plasticizing capacity PE (PE-II screw)	172	g/s 1)
Heating capacity	331	kg/h 1)
Heating zones	109	kW
Rating of dosing	7	
Screw speed (max.)	150	kW
Screw torque	149-(175)*	min-1
Nozzle contact force	9641-(8185)*	Nm
Nozzle stroke (max.)	158	kN
Rating of electromotor	750	mm
Noise level ****)	110	kW
Oil reservoir capacity	77	dBa
Weight injection-unit	950	l
	16.0	kg*10 ³

Controller

- 1) Depending on proces conditions and max. attainable screw-speed
 ()* High number of revolutions only possible with reduced torque (value between brackets)
 **) At 300 degrees C.
 ***) 2/3 of the weight on fixed platen
 ****) According "noise test code" NEN-EN 201 annex K, measurements according ISO 4871 and ISO 11202.

6600



A	: 6087	mm
A1	: 320	mm
A2	: 1390	mm
A3	: 20	mm
A4	: 150	mm
A5	: 65	mm
A6	: 1030	mm
A7	: 370	mm
A8	:	mm
A9	:	mm
A10	:	mm
B	: 7681	mm
B1	: 926	mm
B2	: 815	mm
B3	: 902	mm
B4	: 1098	mm
B5	: 1157	mm
C	: 1510	mm
D1	: 535	mm
D2	: 1000	mm
D3	: 1000	mm
D4	: 1470	mm
D5	: 115	mm
D6	: 920	mm
D7	: 1250	mm
D8	: 665	mm
D9	: 735	mm
D10	: 738	mm
D11	: 1095	mm
S	: 1200	mm
Hmin	: 600	mm
Hmax	: 1350	mm

